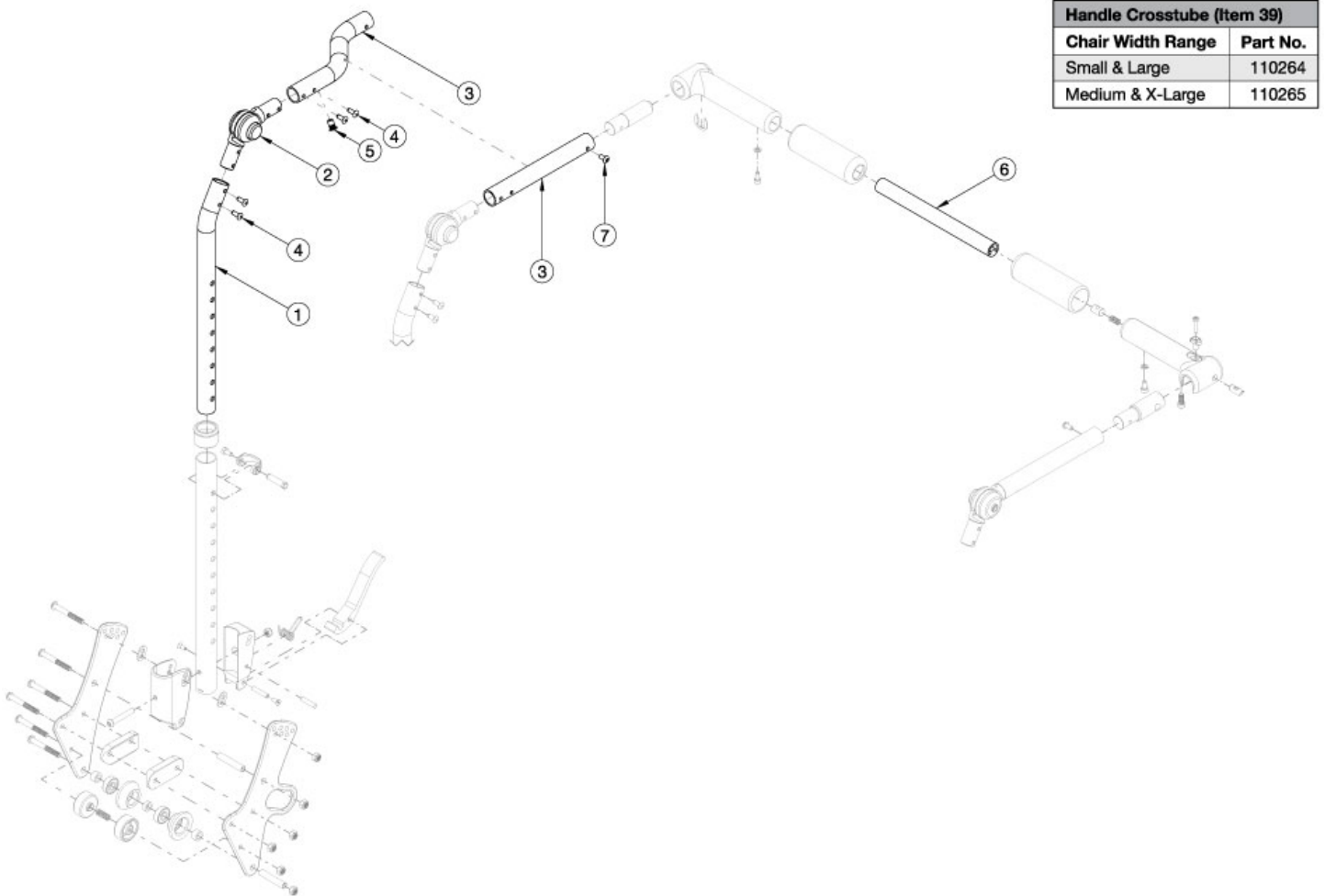


Arc Adjustable Height with Folding Adjustable Handle Backrest - Growth



Callout #3: 10"-13" widths receive the curved tube and 14"-18" widths receive the straight shaped tube. When changing backrest types, check to see if new cables and tilt triggers are needed for both foot and hand tilts.

Item Number	Part Number	Description	Quantity
1, 2, 3b, 4, 5, 7	113608	Height Adjustable Upper Back Tube Assembly, 10-13" Wide, Left, Arc	1
1, 2, 3a, 4, 5, 7	113609	Height Adjustable Upper Back Tube Assembly, 10-13" Wide, Right, Arc	1
1, 2, 3d, 4, 5, 7	113610	Height Adjustable Upper Back Tube Assembly, 14-18" Wide, Left, Arc	1
1, 2, 3c, 4, 5, 7	113611	Height Adjustable Upper Back Tube Assembly, 14-18" Wide, Right, Arc	1
6a	110264	Cross Tube, Rigidizer Handle, 14-16 Wide <i>Used on small and large width ranges</i>	1
6b	110265	Cross Tube, Rigidizer Handle, 16-18 Wide <i>Used on medium and x-large width ranges</i>	1