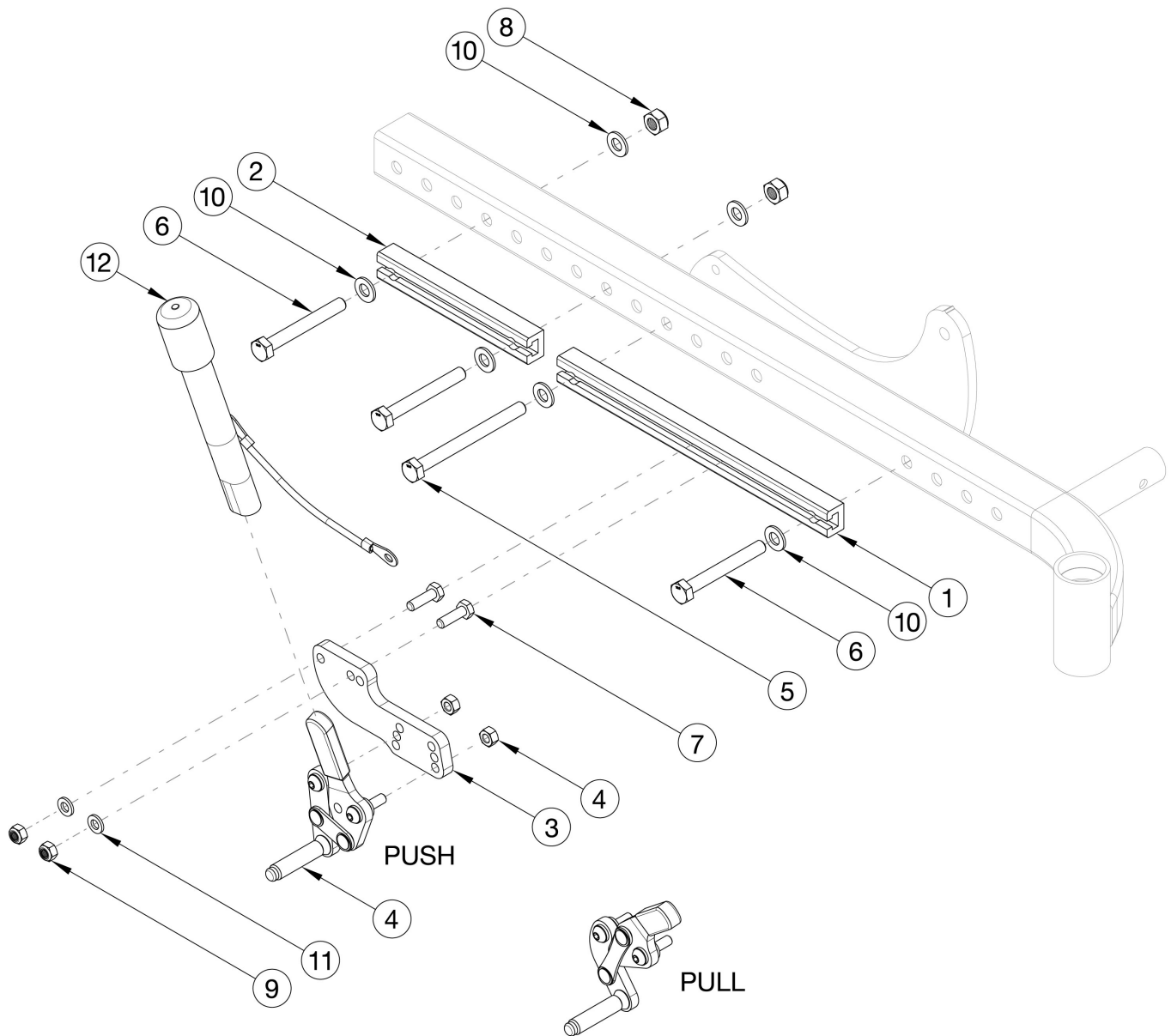


# CR45 Push Pull Wheel Lock



Please note: If chair has Reclining Back with 16" wheels with Low Poly tires or 12" wheels with any tire, please utilize wheel lock kits specifically for the Reclining Backrest. Wheel Lock will be mounted to the Short Wheel Lock Channel, part 112506. All other Backrest and wheel combinations utilize the non-Reclining Backrest kits.

Item Number	Part Number	Description	Quantity
3, 4a, 7, 9, 11	116308	Wheel Lock Push Right	1
3, 4b, 7, 9, 11	116309	Wheel Lock Push Left	1
3, 4a, 4b, 7, 9, 11	116310	Wheel Lock Push Pair	1
3, 4c, 7, 9, 11 - 12	116311	Wheel Lock Push w/Ext Right	1

Item Number	Part Number	Description	Quantity
3, 4d, 7, 9, 11 - 12	116312	Wheel Lock Push w/Ext Left	1
3, 4c, 4d, 7, 9, 11 - 12	116313	Wheel Lock Push w/Ext Pair	1
3, 4e, 7, 9, 11	116314	Wheel Lock Pull Right	1
3, 4f, 7, 9, 11	116315	Wheel Lock Pull Left	1
3, 4e, 4f, 7, 9, 11	116316	Wheel Lock Pull, Pair	1
3, 4g, 7, 9, 11 - 12	116317	Wheel Lock Pull w/Ext Right	1
3, 4h, 7, 9, 11 - 12	116318	Wheel Lock Pull w/Ext Left	1
3, 4g, 4h, 7, 9, 11 - 12	116319	Wheel Lock Pull, w/Ext Pair	1
2 - 3, 4a, 6 - 11	116331	Wheel Lock Assembly Push Reclining Backrest Right <i>Use with Reclining Backrest and 12" wheels or 16" wheels with Low Poly Tires</i>	1
2 - 3, 4b, 6 - 11	116332	Wheel Lock Assembly Push Reclining Backrest Left <i>Use with Reclining Backrest and 12" wheels or 16" wheels with Low Poly Tires</i>	1
2 - 3, 4a, 4b, 6 - 11	116333	Wheel Lock Assembly Push Reclining Backrest Pair <i>Use with Reclining Backrest and 12" wheels or 16" wheels with Low Poly Tires</i>	1
2 - 3, 4c, 6 - 12	116334	Wheel Lock Assembly Push w/Ext Reclining Backrest Right <i>Use with Reclining Backrest and 12" wheels or 16" wheels with Low Poly Tires</i>	1
2 - 3, 4d, 6 - 12	116335	Wheel Lock Assembly Push w/Ext Reclining Backrest Left <i>Use with Reclining Backrest and 12" wheels or 16" wheels with Low Poly Tires</i>	1
2 - 3, 4c, 4d, 6 - 12	116336	Wheel Lock Assembly Push w/Ext Reclining Backrest Pair <i>Use with Reclining Backrest and 12" wheels or 16" wheels with Low Poly Tires</i>	1
2 - 3, 4e, 6 - 11	116337	Wheel Lock Assembly Pull, Reclining Backrest Right <i>Use with Reclining Backrest and 12" wheels or 16" wheels with Low Poly Tires</i>	1
2 - 3, 4f, 6 - 11	116338	Wheel Lock Assembly Pull, Reclining Backrest Left <i>Use with Reclining Backrest and 12" wheels or 16" wheels with Low Poly Tires</i>	1
2 - 3, 4e, 4f, 6 - 11	116339	Wheel Lock Assembly Pull, Reclining Backrest Pair <i>Use with Reclining Backrest and 12" wheels or 16" wheels with Low Poly Tires</i>	1
2 - 3, 4g, 6 - 12	116340	Wheel Lock Assembly Pull w/Ext Reclining Backrest Right <i>Use with Reclining Backrest and 12" wheels or 16" wheels with Low Poly Tires</i>	1

Item Number	Part Number	Description	Quantity
2 - 3, 4h, 6 - 12	116341	Wheel Lock Assembly Pull w/Ext Reclining Backrest Left <i>Use with Reclining Backrest and 12" wheels or 16" wheels with Low Poly Tires</i>	1
2 - 3, 4g, 4h, 6 - 12	116342	Wheel Lock Assembly Pull w/Ext Reclining Backrest Pair <i>Use with Reclining Backrest and 12" wheels or 16" wheels with Low Poly Tires</i>	1
1	112505	Wheel Lock Channel, CR45	2
2	112506	Short Wheel Lock Channel, CR45	2
3	112507	Wheel Lock Mount	2
4a	003668	Wheel Lock, Push, Right	1
4b	003669	Wheel Lock, Push, Left	1
4c	003670	Wheel Lock, Push with Extension, Right	1
4d	003671	Wheel Lock, Push with Extension, Left	1
4e	003676	Wheel Lock, Pull, R	1
4f	003677	Wheel Lock, Pull, L	1
4g	003678	Wheel Lock, Pull, Ext, R	1
4h	003679	Wheel Lock, Pull, Ext, L	1
5	101832	M8 x 90 HHCS Blk Zn	2
6	101829	M8 x 65 HHCS Blk Zn	2
7	101823	M6 X 20 Hhcs Blk Zn	2
8	100659	M8 Nylock Nut Blk Zn	4
9	100658	M6 Nylock Nut Blk Zn	4
10	101858	Washer Flat M8 Blk Zn	8
11	100746	M6 Flat Washer Blk Zn	4
12	200369	Wheel Lock Extension	2