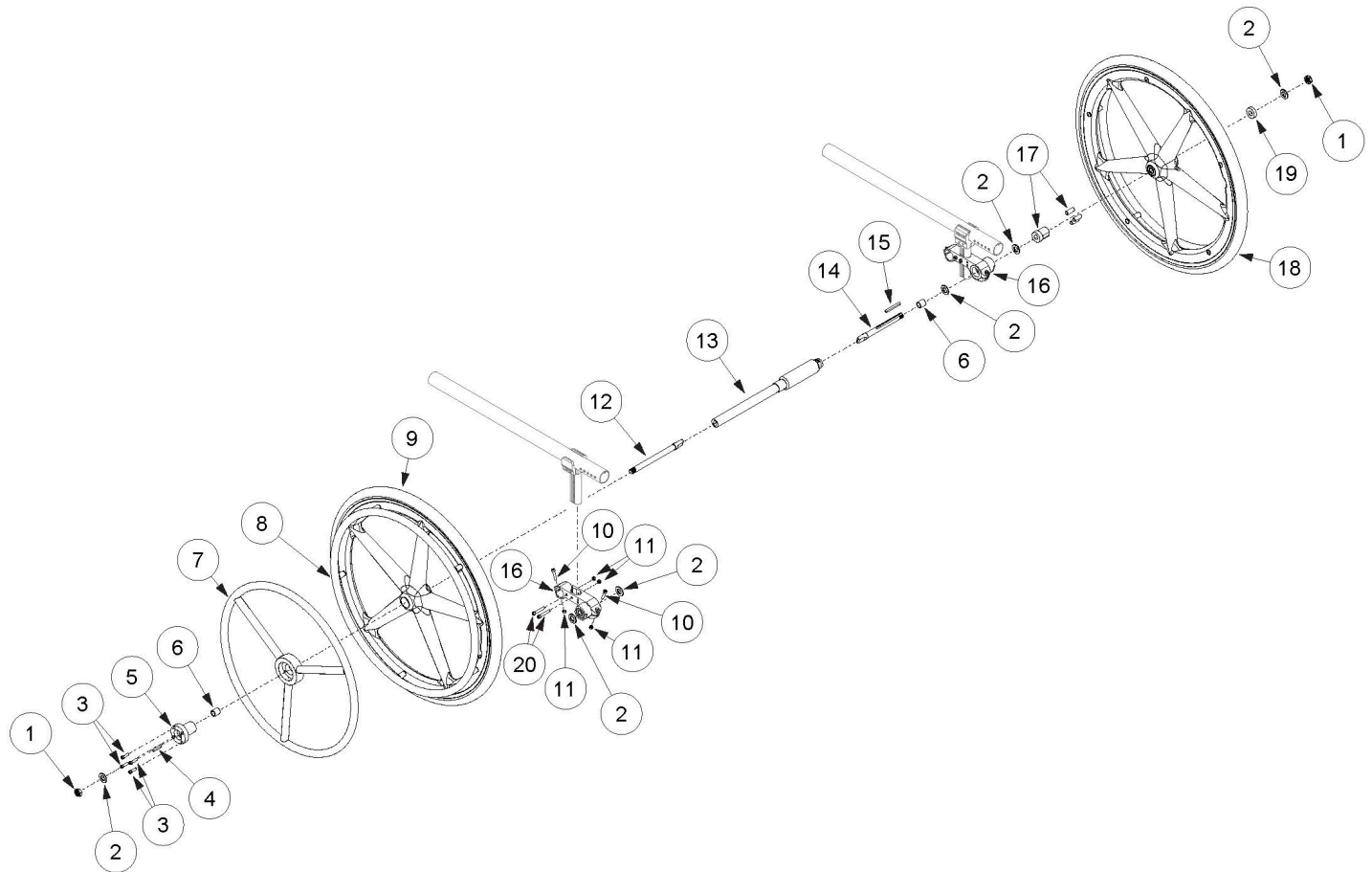


# **(Discontinued) Rogue / Rogue XP One Arm Drive Blade Style**



One Arm Drive Kits do not include rear tires. If retrofitting to add the One Arm Drive, new rear towers are required in addition to the complete One Arm Drive system. If retrofitting from Hex One Arm Drive, you will need a new drive shaft, axles (#12 and #14), One Arm Drive spacer (#6), Axle Mount Assemblies (#16) and installation instruction DCN0504. Reference Rear Wheel Spacing order form No-Go's to determine new rear wheel spacing.

Item Number	Part Number	Description	Quantity
	DCN0504	Instruction - Clik and Rogue Blade One Arm Drive Retrofit Installation	1
1-6, 12, 14b, 15	108079	Blade One Arm Drive Axle Assembly Short <i>Used on 11" seat width with rear wheel spacings less than 1.75" or 12" seat width with rear wheel spacing of 1.25"</i>	1
1	101459	1/2-20 NTE JAM NYL INS L/N BLK ZC	2
3	104056	10-32 X 3/4" Socket Head Cap Screw	4
5	108083	Hub Handrim, One Arm Drive	1
6	107564	One Arm Drive Spacer <i>Qty 1 always used on drive side. Qty 2 used with standard 5.03" axle (part number 107574)</i>	2

Item Number	Part Number	Description	Quantity
8a	101897	Handrim Aluminum Anodized 5 Rivet Nut 20"	1
8b	101898	Handrim Aluminum Anodized 5 Rivet Nut 22"	1
10	101717	M5 x 25 SHCS BLK ZC	4
11	100657	M5 Nylock Nut Blk Zn	8
13a	107562	One Arm Drive - Blade Drive Shaft 8.72"	1
13b	107563	One Arm Drive - Blade Drive Shaft 9.72"	1
13g	107568	One Arm Drive - Blade Drive Shaft 14.67"	1
13j	107571	One Arm Drive - Blade Drive Shaft 17.67"	1
14a	107574	One Arm Drive - Blade Style Axle 5.03"	1
16	108074	One Arm Drive Rogue/Clik Axle Mount 0 Degree Camber PAIR	1
20	101734	M5 x 35 SHCS BLK ZC	4

Rogue Seat Width	Wheel Spacing	Part No.	Compressed Drive Shaft Length	Extended Drive Shaft Length
11"	1, 1.25	*~#107562	7.12"	8.72"
11"	1.5	*#107562	7.12"	8.72"
11"	1.75	~107562	7.12"	8.72"
12"	1, 1.25	*107562	7.12"	8.72"
12"	1.5	~107562	7.12"	8.72"
12"	1.75	~107563	8.12"	9.72"
13"	1, 1.25	107562	7.12"	8.72"
13"	1.5	107563	8.12"	9.72"
13"	1.75	~107032	9.14"	10.74"
14"	1, 1.25	107563	8.12"	9.72"
14"	1.5	107032	9.14"	10.74"
14"	1.75	~107565	10.12"	11.72"
15"	1, 1.25	107032	9.14"	10.74"
15"	1.5	107565	10.12"	11.72"
15"	1.75	~107566	11.12"	12.72"
16"	1, 1.25	107565	10.12"	11.72"
16"	1.5	107566	11.12"	12.72"
16"	1.75	~107567	12.22"	13.82"
17"	1, 1.25	107566	11.12"	12.72"
17"	1.5	107567	12.22"	13.82"
17"	1.75	~107568	13.07"	14.67"
18"	1, 1.25	107567	12.22"	13.82"
18"	1.5	107568	13.07"	14.67"
18"	1.75	~107569	14.07"	15.67"
19"	1, 1.25	107568	13.07"	14.67"
19"	1.5	107569	14.07"	15.67"
19"	1.75	~107570	15.07"	16.67"
20"	1, 1.25	107569	14.07"	15.67"
20"	1.5	107570	15.07"	16.67"
20"	1.75	~107571	16.07"	17.67"

Rogue XP Seat Width	Wheel Spacing	Part No.	Compressed Drive Shaft Length	Extended Drive Shaft Length
11"	1, 1.25	*107562	7.12"	8.72"
11"	1.5	*107562	7.12"	8.72"
11"	1.75	107562	7.12"	8.72"
12"	1, 1.25	107562	7.12"	8.72"
12"	1.5	107562	7.12"	8.72"
12"	1.75	107563	8.12"	9.72"
13"	1, 1.25	107563	8.12"	9.72"
13"	1.5	107563	8.12"	9.72"
13"	1.75	107563	9.14"	10.74"
14"	1, 1.25	107032	9.14"	10.74"
14"	1.5	107032	9.14"	10.74"
14"	1.75	107565	10.12"	11.72"
15"	1, 1.25	107565	10.12"	11.72"
15"	1.5	107565	10.12"	11.72"
15"	1.75	107566	11.12"	12.72"
16"	1, 1.25	107566	11.12"	12.72"
16"	1.5	107566	11.12"	12.72"
16"	1.75	107567	12.22"	13.82"
17"	1, 1.25	107567	12.22"	13.82"
17"	1.5	107568	12.22"	13.82"
17"	1.75	107568	13.07"	14.67"
18"	1, 1.25	107568	13.07"	14.67"
18"	1.5	107568	13.07"	14.67"
18"	1.75	107569	14.07"	15.67"
19"	1, 1.25	107569	14.07"	15.67"
19"	1.5	107569	14.07"	15.67"
19"	1.75	107570	15.07"	16.67"
20"	1, 1.25	107570	15.07"	16.67"
20"	1.5	107570	15.07"	16.67"
20"	1.75	107571	16.07"	17.67"

\*For this configuration, do not use spacer 107564 and replace axle 107574 with axle 108073.

~For this configuration, tower assemblies are to be mounted outboard of the frame.

#For this configuration, camber plugs require adjustment during drive shaft installation.

NOTE: 1" and 1.25" wheel spacings are not available with Height Adjustable T-Arms.

NOTE: Tower assemblies are to be mounted outboard of the frame when T-Arms are used.