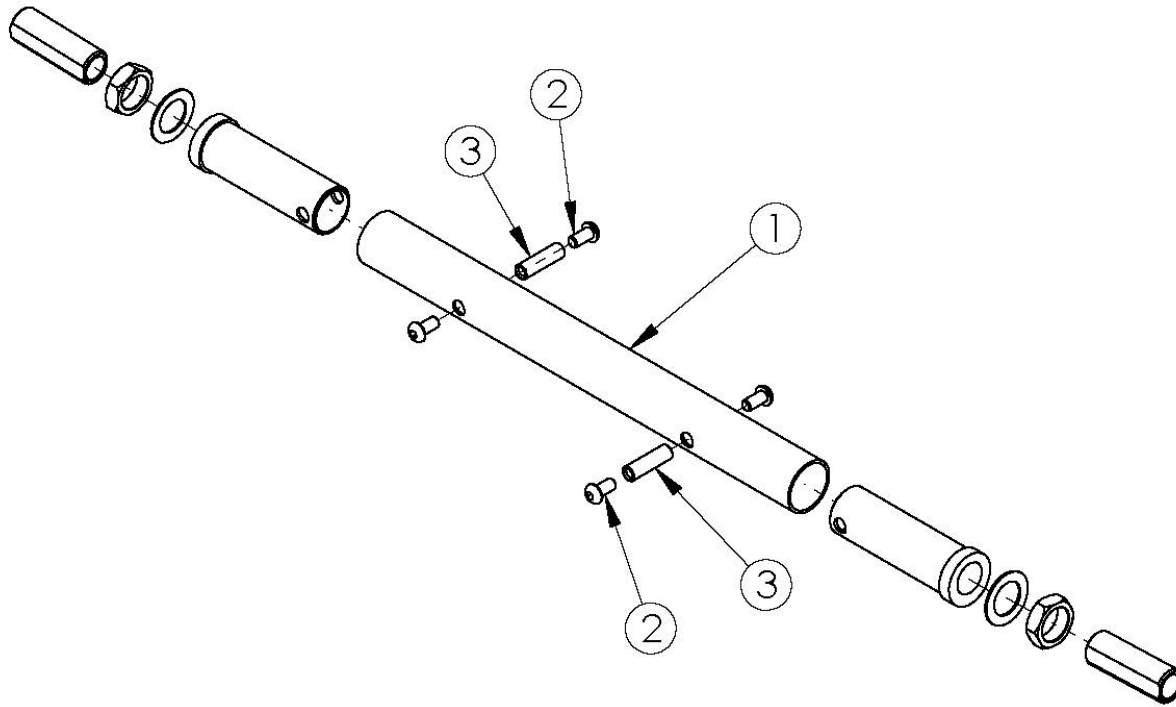


Rogue Camber Tube - Growth



Black Camber Tube kits based on seat width. Color Anodized Camber Tube kits used on all chair widths. New camber tube required when changing the degree of camber by more than 2 degrees. If Wheelchair Drive Ready option is present, replacement parts need to be processed through Alber USA.

| Item Number | Part Number | Description | Quantity |
|-------------|-------------|---------------------------------|----------|
| 1a | 500722 | Camber Tube Rigid 12" Kit Black | 1 |
| 1b | 500723 | Camber Tube Rigid 13" Kit Black | 1 |
| 1c | 500724 | Camber Tube Rigid 14" Kit Black | 1 |
| 1d | 500725 | Camber Tube Rigid 15" Kit Black | 1 |
| 1e | 500726 | Camber Tube Rigid 16" Kit Black | 1 |
| 1f | 500727 | Camber Tube Rigid 17" Kit Black | 1 |
| 1g | 500728 | Camber Tube Rigid 18" Kit Black | 1 |
| 1h | 500729 | Camber Tube Rigid 19" Kit Black | 1 |
| 1i | 500730 | Camber Tube Rigid 20" Kit Black | 1 |

| Item Number | Part Number | Description | Quantity |
|-------------|-------------|---|----------|
| 1j | 501749 | Camber Tube Rigid Blue Anodized | 1 |
| 1k | 501750 | Camber Tube Rigid Bright Green Anodized | 1 |
| 1l | 501751 | Camber Tube Rigid Orange Anodized | 1 |
| 1m | 501752 | Camber Tube Rigid Pink Anodized | 1 |
| 1n | 501753 | Camber Tube Rigid Pewter Anodized | 1 |
| 1o | 501754 | Camber Tube Rigid Purple Anodized | 1 |
| 1p | 501755 | Camber Tube Rigid Red Anodized | 1 |
| 1q | 501756 | Camber Tube Rigid Gold Anodized | 1 |
| 2 | 100667 | M6 x 12 BTN SHCS BLKZC w/Patch | 4 |
| 3 | 000066 | M6 x 27 Threaded Barrel | 2 |

Color Anodizing Samples

