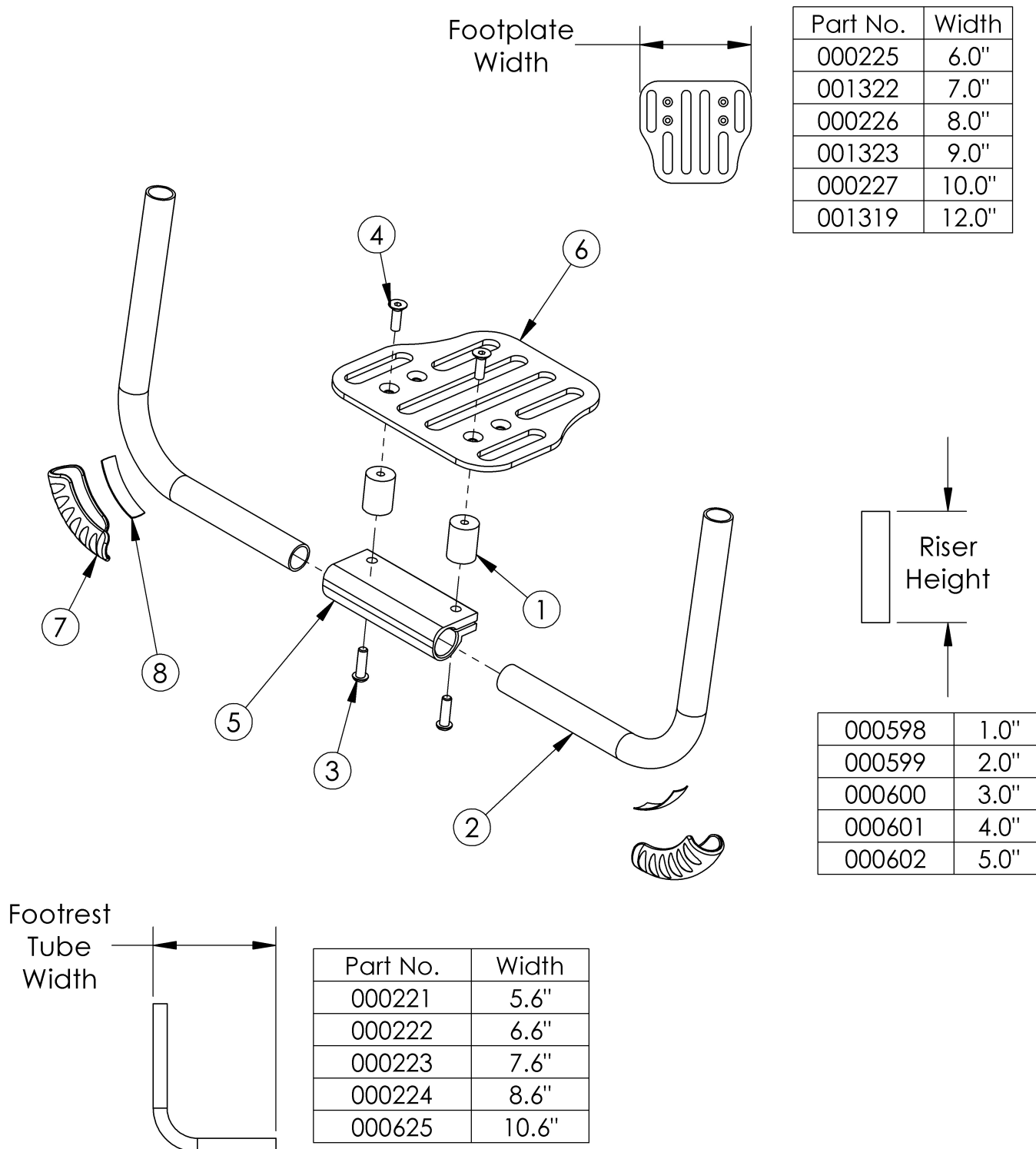


# Rogue XP Angle Adjustable Footrest With Risers



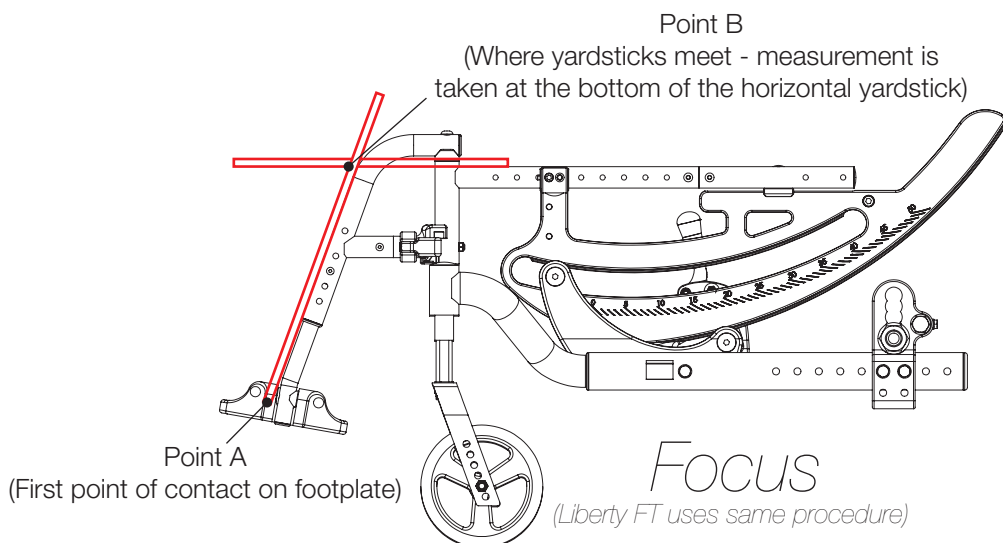
Footrest assemblies based on straight frame

| Item Number   | Part Number | Description   | Quantity |
|---------------|-------------|---|----------|
| 1a, 3a, 4a    | 502321      | Rigid Footplate Riser 1" w/ Hardware Assembly, PAIR   | 1        |
| 1b, 3a, 4a    | 502322      | Rigid Footplate Riser 2" w/ Hardware Assembly, PAIR   | 1        |
| 1c, 3a, 4a    | 502323      | Rigid Footplate Riser 3" w/ Hardware Assembly, PAIR   | 1        |
| 1d, 3a, 4a    | 502324      | Rigid Footplate Riser 4" w/ Hardware Assembly, PAIR   | 1        |
| 1e, 3a, 4a    | 502325      | Rigid Footplate Riser 5" w/ Hardware Assembly, PAIR   | 1        |
| 2a, 3 - 5, 6a | 503132      | Footrest Assembly Ang Adj 10" Wide for 2" - 5" Riser Rigid<br><i>Risers not included</i>          | 1        |
| 2a, 3 - 5, 6b | 503133      | Footrest Assembly Ang Adj 11" Wide for 2" - 5" Riser Rigid<br><i>Risers not included</i>          | 1        |
| 2a, 3 - 5, 6c | 503134      | Footrest Assembly Ang Adj 12" Wide for 2" - 5" Riser Rigid<br><i>Risers not included</i>          | 1        |
| 2a, 3 - 5, 6d | 503135      | Footrest Assembly Ang Adj 13" Wide for 2" - 5" Riser Rigid<br><i>Risers not included</i>          | 1        |
| 2b, 3 - 5, 6e | 503136      | Footrest Assembly Ang Adj 14", 15" Wide for 2" - 5" Riser Rigid<br><i>Risers not included</i>     | 1        |
| 2c, 3 - 5, 6e | 503137      | Footrest Assembly Ang Adj 16" Wide for 2" - 5" Riser Rigid<br><i>Risers not included</i>          | 1        |
| 2c, 3 - 5, 6f | 503138      | Footrest Assembly Ang Adj 17" Wide for 2" - 5" Riser Rigid<br><i>Risers not included</i>          | 1        |
| 2d, 3 - 5, 6f | 503139      | Footrest Assembly Ang Adj 18", 19" Wide for 2" - 5" Riser Rigid<br><i>Risers not included</i>     | 1        |
| 2a,3 - 5, 6a  | 500772      | Footrest Assembly Ang Adj 10", 11" Wide for No Riser/1" Riser Rigid<br><i>Risers not included</i> | 1        |
| 2a, 3 - 5, 6b | 500773      | Footrest Assembly Ang Adj 12" Wide for No Riser/1" Riser Rigid<br><i>Risers not included</i>      | 1        |
| 2a,3 - 5, 6c  | 500774      | Footrest Assembly Ang Adj 13" Wide for No Riser/1" Riser Rigid<br><i>Risers not included</i>      | 1        |
| 2b, 3 - 5, 6d | 500775      | Footrest Assembly Ang Adj 14" Wide for No Riser/1" Riser Rigid<br><i>Risers not included</i>      | 1        |
| 2b, 3 - 5, 6e | 500776      | Footrest Assembly Ang Adj 15" Wide for No Riser/1" Riser Rigid<br><i>Risers not included</i>      | 1        |
| 2c, 3 - 5, 6e | 500777      | Footrest Assembly Ang Adj 16", 17" Wide for No Riser/1" Riser Rigid<br><i>Risers not included</i> | 1        |
| 2d, 3 - 5, 6f | 500778      | Footrest Assembly Ang Adj 18", 19" Wide for No Riser/1" Riser Rigid                               | 1        |

| Item Number | Part Number | Description   | Quantity |
|-------------|-------------|---|----------|
|             |             | <i>Risers not included</i>  |          |
| 1a          | 000598      | Rigid Footplate Riser 1"  | 2        |
| 1b          | 000599      | Rigid Footplate Riser 2"  | 2        |
| 1c          | 000600      | Rigid Footplate Riser 3"  | 2        |
| 1d          | 000601      | Rigid Footplate Riser 4"  | 2        |
| 1e          | 000602      | Rigid Footplate Riser 5"  | 2        |
| 2a          | 000221      | Footrest Tube Angle Adjustable 5.6" Rigid   | 2        |
| 2b          | 000222      | Footrest Tube Angle Adjustable 6.6" Rigid   | 2        |
| 2c          | 000223      | Footrest Tube Angle Adjustable 7.6" Rigid   | 2        |
| 2d          | 000224      | Footrest Tube Angle Adjustable 8.6" Rigid   | 2        |
| 3           | 101180      | M6 x 20 SHCS BLK ZC   | 2        |
| 4           | 101594      | M6 x 14 CLS10.9 DIN7991 FSHCS BLKZC w/Patch   | 2        |
| 5           | 100789      | Footrest Adjustable Clamp 5"  | 1        |
| 6a          | 000225      | Footrest Platform Angle Adjustable 6"   | 1        |
| 6b          | 001322      | Footrest Platform Angle Adjustable 7"   | 1        |
| 6c          | 000226      | Footrest Platform Angle Adjustable 8"   | 1        |
| 6d          | 001323      | Footrest Platform Angle Adjustable 9"   | 1        |
| 6e          | 000227      | Footrest Platform Angle Adjustable 10"  | 1        |
| 6f          | 001319      | Footrest Platform Angle Adjustable 12"  | 1        |
| 7, 8        | 501739      | Footrest Protector w/ Instructions Kit Left Rigid   | 1        |
| 7, 8        | 501740      | Footrest Protector w/ Instructions Kit Right Rigid  | 1        |
| 7, 8        | 501741      | Footrest Protector w/ Instructions Kit PAIR Rigid   | 1        |
|             | 117464      | Footrest Plug Kit, Rogue2 / Rogue XP<br><i>Used when switching from a high mount footrest</i> | 1        |

Distance between Point A and Point B  
B = Footplate Length

**NOTE:** The yardstick on the top plane of the seat frame must lie flat against frame. The yardstick going from the footplate to the second yardstick must be square against the hanger tube.



Distance between Point A and Point B  
B = Footplate Length

**NOTE:** The yardstick on the top plane of the seat frame must lie flat against frame. The yardstick going from the footplate to the second yardstick must be square against the front tube.



Distance between Point A and Point B  
B = Footplate Length

**NOTE:** The yardstick on the top plane of the hanger must lie flat against hanger. The yardstick going from the footplate to the second yardstick must be square against the hanger tube.

