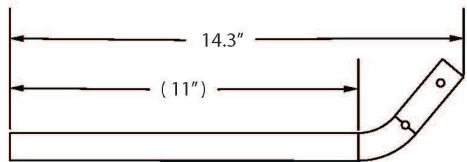
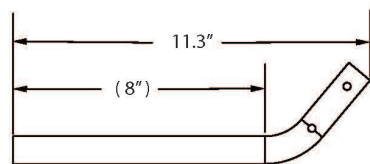


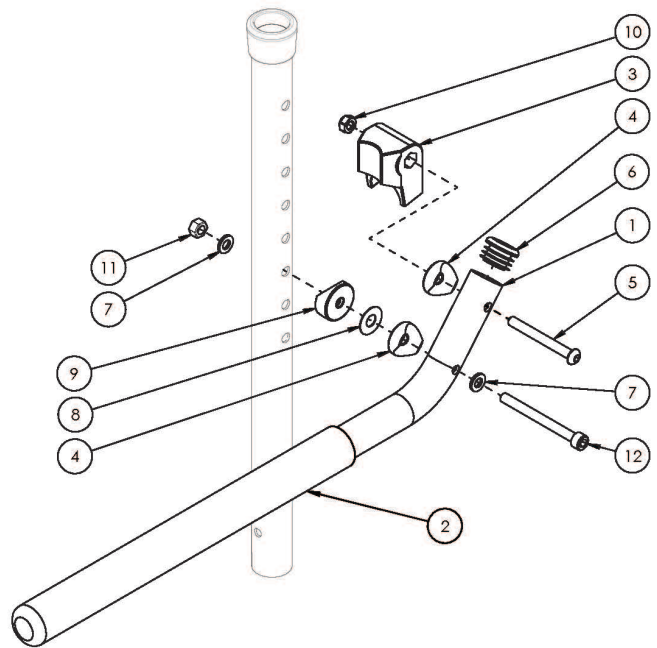
# (Discontinued) Liberty Tubular Flip Up Armrest



Standard Flip Up Armrest



Short Flip Up Armrest



Option discontinued on Liberty 1/26/23

Item Number	Part Number	Description	Quantity
1a, 2 - 12	112181	Tubular Flip Up Armrest Assembly, Liberty	1
1a, 2 - 12	112182	Tubular Flip Up Armrest Assembly, Liberty (Pair)	1
1b, 2 - 12	112183	Tubular Flip Up Armrest Assembly Short, Liberty <i>Used if chair depth is 14" and Therafin Tray is not present</i>	1
1b, 2 - 12	112184	Tubular Flip Up Armrest Assembly Short, Liberty (Pair) <i>Used if chair depth is 14" and Therafin Tray is not present</i>	1
1a, 2, 6	501250	Tubular Flip Up Armrest Tube Assembly	1
1b, 2, 6	501251	Tubular Flip Up Armrest Tube Assembly Short <i>Used if chair depth is 14" and Therafin Tray is not present</i>	1
3	501391	Tubular Flip Up Armrest Stop Block	1
4	000054	Saddle 7/8"	2
5	101125	M6 x 55 BTN SHCS BLKZC	1
6	100803	Tube End Plug 7/8"	1
7	100746	M6 Flat Washer Blk Zn	2

<b>Item Number</b>	<b>Part Number</b>	<b>Description</b>	<b>Quantity</b>
8	000428	Wear Washer	1
9	000055	Saddle 1"	1
10	100658	M6 Nylock Nut Blk Zn	1
11	101456	M6 Ovl Top L/N ZC	1
12	101849	M6 x 65 SHCS Blk Zn	1