



ARMREST LINKAGE REPLACEMENT INSTRUCTION SHEET



Please read these instructions carefully before beginning the installation. Failure to understand and follow installation instructions may result in injury to installer and/or end user and may void the warranty. If you have any questions call Sunrise Medical Technical support at 800-333-4000.

Armrest Linkage parts:

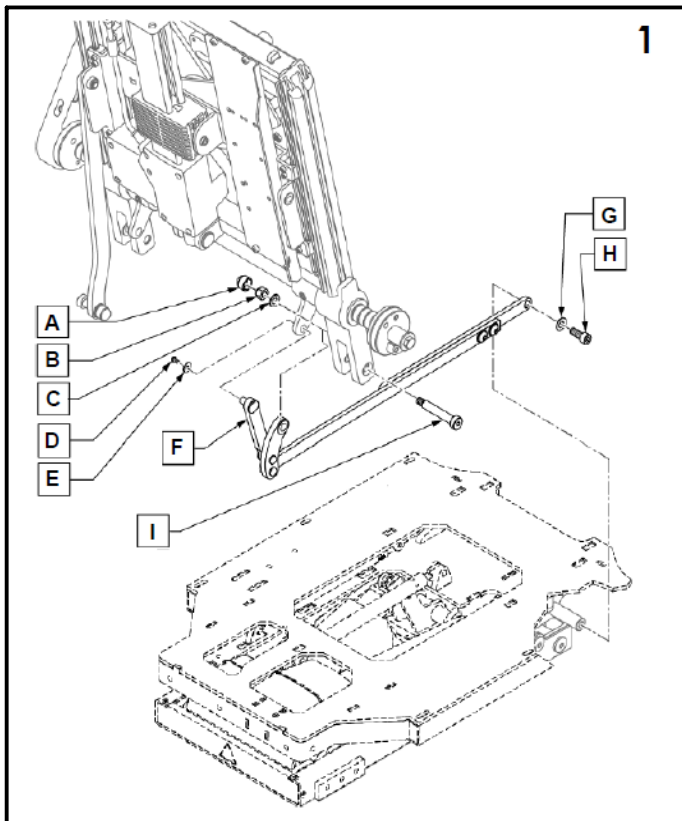
- | | | |
|----------------------------|-----------------------------|-----------------------------|
| 1. 1 ea M8 Nut Cap (A) | 5. 1 ea flat washer M5 (E) | 9. Shoulder Screw right (I) |
| 2. 1 ea M8 Nut (B) | 6. 1 ea Armrest Linkage (F) | |
| 3. 1 ea Washer Flat M8 (C) | 7. 1 ea flat washer (G) | |
| 4. 1 ea M5 screw (D) | 8. 1 ea M6 screw (H) | |

Tools needed for assembly:


- | | |
|------------------|------------------|
| 1. 2.5mm hex key | 4. 13mm wrench |
| 2. 5mm hex key | 5. Torque wrench |
| 3. 6mm hex key | |

A. Armrest Linkage Removal:

1. With a 6mm hex key, remove screw (H) and washer (G) from seating module. (Fig. 1) Discard hardware. CAUTION: The armrests will no longer be supported when this bolt is removed. Raise the armrests to ease the removal.
2. Now, with a 2.5mm hex key and 13mm wrench, remove screw (D) and washer (E). (Fig. 1) Discard hardware.
3. Using a 5mm hex key and 13mm wrench, remove cap (A), nut (B) and washer (C) from bolt (I). (Fig. 1) Save all hardware and cap for reinstall unless hardware kit was purchased.
4. Remove rear portion of Armrest Linkage (F) from the backrest bracket. (Fig. 1)
5. Before returning or discarding Armrest Linkage, mark and note the location of the two screws highlighted in Figure 2. These two screw locations are based on seat depth and the new Armrest Linkage will need to match this original one. If needed, use 5mm hex key.



B. Armrest Linkage Installation:

1. Inspect the new Armrest Linkage prior to installation. Refer back to the original Armrest Linkage to make sure the two screws are in the correct location. (Fig. 2)
2. Install new armrest link on to bolt (I) using hardware (A, B, & C). Loosely tighten with 5mm hex key and 13mm wrench.
3. With a 2.5mm hex key and 13mm wrench, install new hardware (D & E) into the inner back bracket but don't tighten yet. (Fig. 1)
4. With a 6mm hex key, install new hardware (G & H) into the front portion of the Armrest Linkage and seating module. (Fig. 1) Raise the armrests as needed to ease installation.
5. Tighten all the hardware. Torque screw (H) to 60-70 in-lbs. Torque screw (I) and nut (B) to 120-132 in-lbs. And torque screw (D) to 27-32 in-lbs. 



C. INSPECT:

1. All torque values with a torque wrench.
2. Seating system to ensure all wire harnesses are out of the way and are not getting pinched.
3. Seating system to verify that the harnesses are not put under tension in any position.
4. Ensure that the cable-ties are not so tight that they deform cable jackets.
5. Where possible cables should be protected and hidden by shrouds.

DEALER/TECHNICIAN WARNING**WARNING**

Attention dealers and qualified technicians, do not operate or service this device without first reading the owners manual. If you do not understand the instructions and warnings in the owners manual please contact the Quickie Technical Service Department before operating and/or servicing the Quickie device. Failure to do so may result in damage and/or injury. ***Find more information and important warnings see the wheelchair owner's manual or at: www.SunriseMedical.com.***

**Sunrise Medical 2842 Business Park Ave Fresno, CA 93727 USA
In Canada (800) 263-3390**