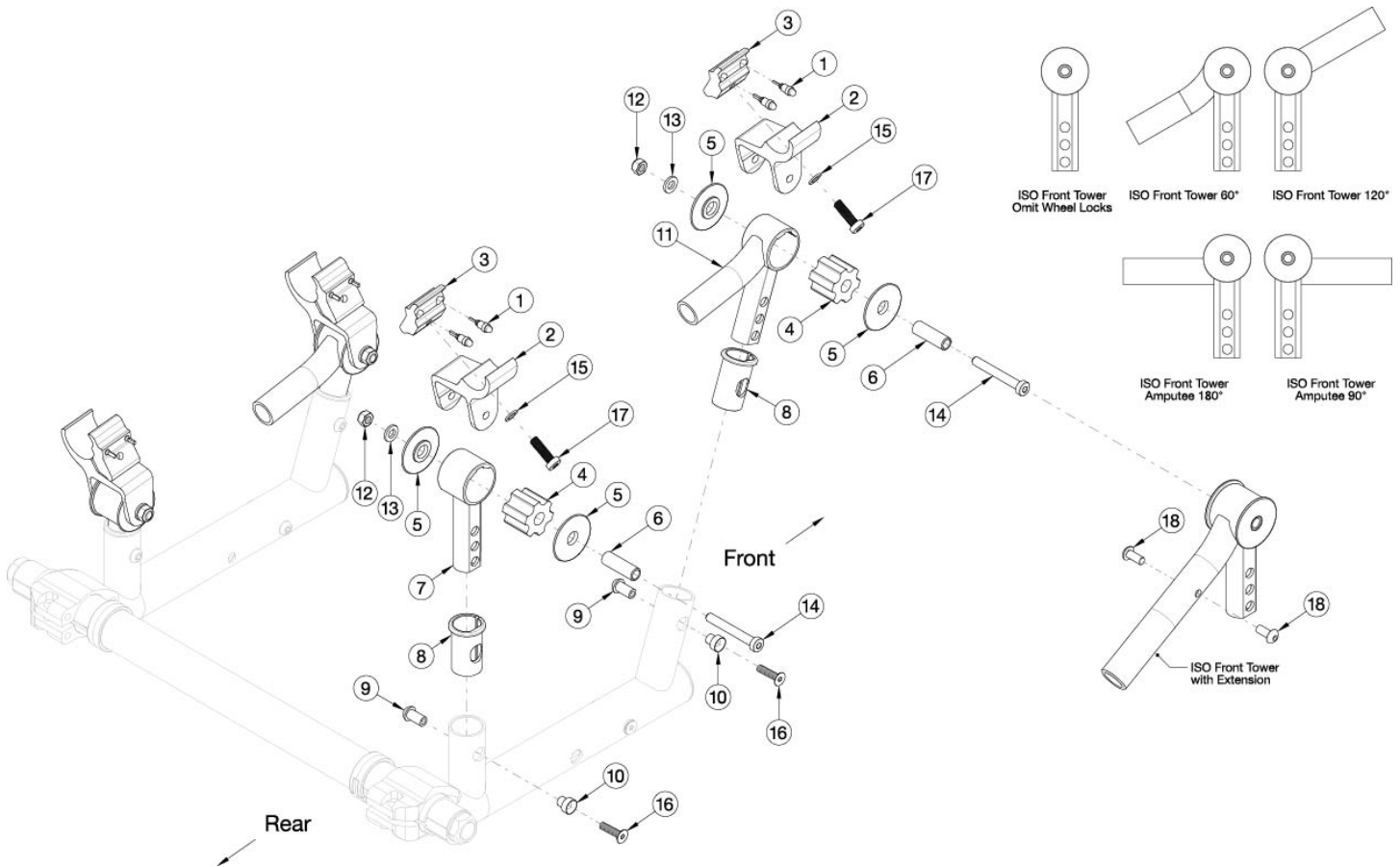


ISO Towers



ISO Towers are modified per order and must be ordered through Customer Service. Serial number required upon order. Customer Service reference DCN0511

Item Number	Part Number	Description	Quantity
1-3, 15, 17	108077	Rear ISO Clamp Assembly with Hardware Kit	1
2, 3, 15, 17	108078	Front ISO Clamp Assembly with Hardware Kit	1
5, 6, 9, 10, 12-16	121193	ISO Tower Hardware Kit	1
1, 3	108076	ISO Clamp Inside with Button	2
2	003850	ISO Clamp Outside	4
3	003851	ISO Clamp Inside	4
4a	003859	Polymer Bushing 50 Durometer (Red)	4
4b	003860	Polymer Bushing 60 Durometer (Blue)	4
4c	004544	Polymer Bushing 70 Durometer (Black)	4
4d	004545	Polymer Bushing 80 Durometer (Green)	4

Item Number	Part Number	Description	Quantity
5	003861	Iso Strut Washer	8
6	003863	ISO Barrel	4
7	108183	Rear ISO Tower	2
8a	003867	Vertical Upright Bushing With Flat, Black	4
8b	108060_ _ _	Vertical Upright Bushing, Highlight Color	4
9	003869	M5 Barrel Nut	4
10	003870	Barrel, M5 FHCS	4
11a	108187	Front ISO Tower 120°, Right	1
11b	110040	Front ISO Tower with Extension 120°, Right	1
11c	108189	Front ISO Tower 120°, Left	1
11d	110041	Front ISO Tower with Extension 120°, Left	1
11e	108188	Front ISO Tower 60°, Right	1
11f	110042	Front ISO Tower with Extension 60°, Right	1
11g	108190	Front ISO Tower 60°, Left	1
11h	110043	Front ISO Tower with Extension 60°, Left	1
11i	108184	Front ISO Tower, Omit Wheel Locks	2
11j	108185	Front ISO Tower, Amputee 90°	2
11k	110038	Front ISO Tower with Extension, Amputee 90°	2
11l	108186	Front ISO Tower, Amputee 180°	2
11m	110039	Front ISO Tower with Extension, Amputee 180°	2
12	100658	M6 Nylock Nut Blk Zn	4
13	100746	M6 Flat Washer Blk Zn	4
14	101123	M6 x 45 Low SHCS BLK ZC	4
15	102326	Flat Washer ID .254" x OD .396" Thickness .047" Zinc	4
16	103322	M5 x 20 FHCS Blk Zc	4
17	103396	M6 x 20 LHCS Blk Zc	4
18	102621	M5 x 8 BHCS BLK ZC	2