



720

Available in
Black or White

Bariatric Rehab Shower/Commode Chair

- Packages Now Available
- Stainless Steel Frame- Six Seat and Frame Sizes:
20"Wx20"D, 22"Wx20"D, 24"Wx20"D, 26"Wx20"D,
28"Wx20"D, 30"Wx20"D
- Three Mobility Choices:
Four Casters, 20", or 24" Wheels
- 600 lb. Weight Capacity

This bariatric shower/commode chair is designed to aid both client and caregiver with safe and easy bathroom and shower activities. Many features and options of the 720 help to fulfill the needs of the rehabilitating patient, long-term care, or home bound clients.

The stainless steel frame combines high strength with low maintenance, making the model 720 the highest quality shower/commode chair made for bariatric clients.



FRAMES



P13598
20"Wx20"D
Stainless Steel
Frame



P13599
22"Wx20"D
Stainless Steel
Frame



P13600
24"Wx20"D
Stainless Steel
Frame



P13601
26"Wx20"D
Stainless Steel
Frame



P13602
28"Wx20"D
Stainless Steel
Frame



P13603
30"Wx20"D
Stainless Steel
Frame



P13670
Front
Anti-Tippers

WHEELS/REAR CASTERS



P13283-2
6" Locking
Casters
(pair)



P61094
20" Wheels
(pair)



P60551
20" Pneumatic
Street Tread
Wheels
(pair)



P61096
24" Wheels
(pair)



P60549
24" Pneumatic
Street Tread
Wheels
(pair)



P61059
24" Flat Free Street
Tread Wheels
(pair)



P61102
20" PVC Handrims
(replaces standard
handrims, pair)

AXLES



P61104
24" PVC Handrims
(replaces standard
handrims, pair)



P13769
Bolted Axles with
Tipping Levers
(pair)



P60532
Wheel Locks
(pair)



P13135
Wheel Locks with
Extended Handle
(pair)

FRONT CASTERS



60780-2
6" Casters
(pair)



13283-2
6" Locking Casters
(pair)

SEATS



P60886
20"Wx20"D
Ensolute® 1.5" foam
Race Track Oval Seat
A-7.75"xB-12.75" opening



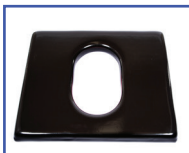
P61117
20"Wx20"D
Ensolute® 1" foam
Front/Rear Open Seat
A-4.5"xB-7.75" opening



P60887
22"Wx20"D
Ensolute® 1.5" foam
Race Track Oval Seat
A-7.75"xB-12.75" opening



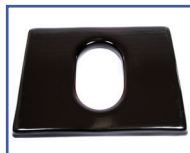
P61118
22"Wx20"D
Ensolute® 1" foam
Front/Rear Open Seat
A-4.5"xB-7.75" opening



P60888
24"Wx20"D
Ensolute® 1.5" foam
Race Track Oval Seat
A-7.75"xB-12.75"



P61119
24"Wx20"D
Ensolute® 1" foam
Front/Rear Open Seat
A-4.5"xB-7.75" opening



P60889
26"Wx20"D
Ensolute® 1.5" foam
Race Track Oval Seat
A-7.75"xB-12.75"

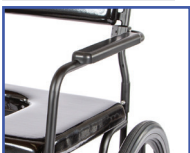
ARMRESTS



P61110
28"Wx20"D
Ensolute® 1.5" foam
Race Track Oval Seat
A-7.75"xB-12.75"



P61111
30"Wx20"D
Ensolute® 1.5" foam
Race Track Oval Seat
A-7.75"xB-12.75"



P13584
Left Hand Armrest
with Pad



P13585
Right Hand Armrest
with Pad



P13586
Left Hand Armrest
with Arm Trough



P13587
Right Hand Armrest
with Arm Trough

LEG RESTS



PL13581
Left Gooseneck
Leg Rest



PR13581
Right Gooseneck
Leg Rest



P13582
Left Elevating Leg
Rest



P13583
Right Elevating Leg
Rest



P13196
20"W 1-pc. Foot
Plate/Leg Rest



P13184
22"W 1-pc. Foot
Plate/Leg Rest



P13197
24"W 1-pc. Foot
Plate/Leg Rest

LEG RESTS



P13198
26"W 1-pc. Foot
Plate/Leg Rest

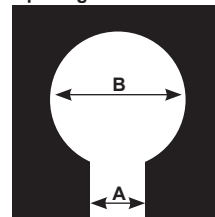


P13579
28"W 1-pc. Foot
Plate/Leg Rest

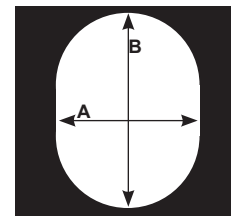


P13580
30"W 1-pc. Foot
Plate/Leg Rest

Front/Rear Seat
Opening Measurements



Race Track Seat Opening
Measurements



FOOT PLATES



PL11099
Left Foot Plate



PR11099
Right Foot Plate



PL11100
Left Foot Plate with
Heel Loop



PR11100
Right Foot Plate
with Heel Loop



P61137
Left Oversized
Aluminum
Foot Plate



P61138
Right Oversized
Aluminum
Foot Plate



PL11101
Left Padded
Foot Plate

BACKS



PR11101
Right Padded
Foot Plate



P13592
20"W Contoured
Solid Back



P13593
22"W Solid Back



P13594
24"W Solid Back



P13595
26"W Solid Back



P13596
28"W Solid Back



P13597
30"W Solid Back

BELTS



PW60909
Waist Belt
(for 20"W frame only,
48" circumference with 12"
velcro overlap)



PT60909
Trunk Belt
(for 20"W frame only,
48" circumference with
12" velcro overlap)



PW11094
Waist Belt
(for 22"W and 24"W frame
only, 48" circumference
with 12" velcro overlap)



PT11094
Trunk Belt
(for 22"W and 24"W frame
only, 48" circumference
with 12" velcro overlap)



PW11095
Waist Belt
(for 26"W frame only, 48"
circumference with 12"
velcro overlap)



PT11095
Trunk Belt
(for 26"W frame only, 48"
circumference with 12"
velcro overlap)



P11093
Bodypoint®
Trunk Belt
(for 20"W and 22"W frame
only, 48" circumference
with 12" velcro overlap)



P11102
Bodypoint®
Trunk Belt
(for 20"W and 22"W frame
only, pair)



P11103
Bodypoint®
Trunk Belt &
Waist Belt
(for 20"W frame only)



P11115
Bodypoint®
Trunk Belt &
Waist Belt
(for 22"W frame only)



P11112
Bodypoint®
XL Trunk Belt
(for 24"W and 26"
frame only)



P11113
Bodypoint®
Belt w/Quick
Release Knobs
(for 20"W and 22" frame only)

PANS



P13204
20"Wx20"D
Pan/Hanger



P13203
22"Wx20"D
Pan/Hanger



P13205
24"Wx20"D
Pan/Hanger



P13206
26"Wx20"D
Pan/Hanger



P13577
28"Wx20"D
Pan/Hanger



P13578
30"Wx20"D
Pan/Hanger



PK413 Package #4 - 26"W



720 with Options

720 SPECIFICATIONS

Weight Capacity	600 lbs.
Seat Width	20", 22", 24", 26", 30"
Seat Width Between Arm Pads	20.5", 22.5", 24.5", 26.5"
Seat Depth	20"
Chair Width	26.125", 28.125", 30.125", 32.125"
Floor to Top of Seat Height (front of seat)	22.5"
Back Height (from seat)	16"
Arm Height (from seat – standard arm)	7.75"
Under Seat Clearance (rear)	18"
Overall Depth with Foot Plate	42.5"
Top of Seat to Foot Plate	18"