

BREEZY® *ultra*⁴

high-strength
lightweight
wheelchair



B R E E Z Y®

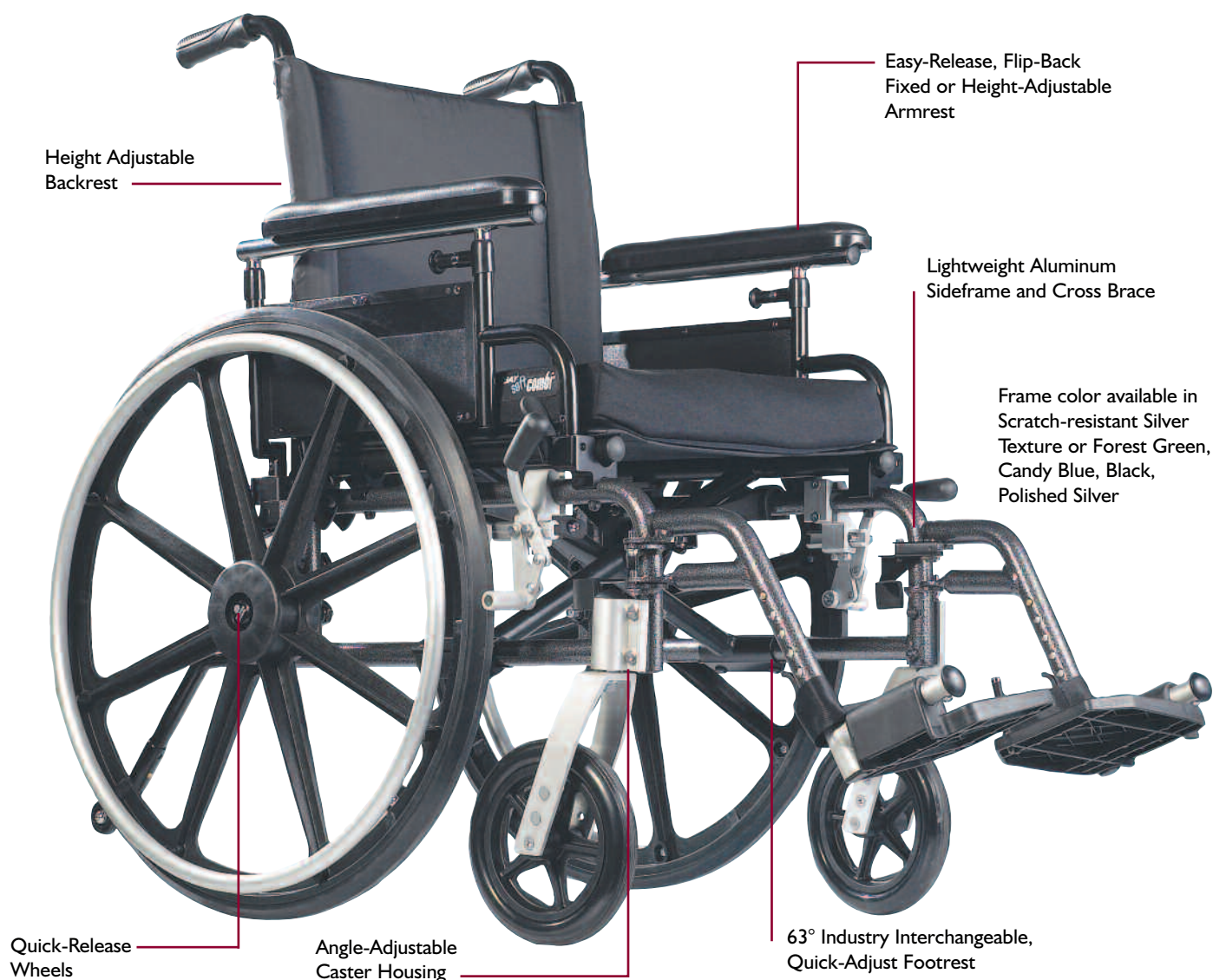
BREEZY® *ultra⁴*

Breezy® — the tradition of superior clinical benefit integrated with stylish looks continues with the new Breezy Ultra⁴ high-strength, lightweight wheelchair. Compare these features and you will find the Breezy Ultra⁴ sets a higher standard for performance, versatility, and value.

Lighter Weight Aluminum Frame — Every ounce of added weight requires greater energy and strength, not only to propel but also to load in and out of a car. Breezy Ultra⁴, made out of corrosion-resistant aluminum, is one of the lightest wheelchairs in its class.

Quick-Release Wheels Are Standard — An added cost on other comparable wheelchairs, all Breezy Ultra⁴ users will appreciate the ability to remove the wheels with just the push of a button. This makes transferring into vehicles easy by converting the chair into three smaller, lightweight components.

Enhanced User Function and Positioning — The Breezy Ultra⁴'s package of adjustable features and options, plus the ability to accommodate Jay® seating products, allows you to create a custom fit to accommodate a variety of positioning needs. The Breezy Ultra⁴ can be set up for foot propulsion, accommodate needs for added lateral stability, provide for planar flexion, and aid in positioning kyphotic postures making it one of the most versatile models available.



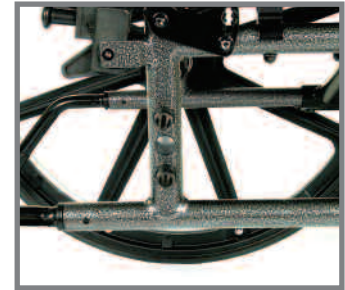
Premium Features are Standard on Breezy Ultra⁴



Quick-Release Wheels
Make loading in/out of vehicles easy.



Angle-Adjustable Front Casters
Accommodate angled seating surfaces without moving the caster housings out of square.



Adjustable Axle Positions
Three seat height positions and the ability to add a fixed tilt allow for greater flexibility.



Wraparound Armrest
Provides a narrower overall chair width.



Quick-Adjust Footrests
Adjust height without tools using spring-loaded detent buttons. Heel loops adjust with Velcro[®].



Height-Adjustable Back with Pocket
Store personal items/documents in pocket with closing flap. Adjust height easily without tools.

Key Options

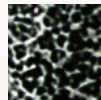


Angle-Adjustable Back
Back adjusts from 6° anterior to 24° posterior in 6° increments for better positioning. Height adjusts to 17", 18" or 19".



Height-Adjustable Arms
4" vertical adjustment allows for use of cushions.

Colors



Actual colors may appear different

Specifications

Frame Weight*	30.9 lbs (14.02 kg)	
Frame Material	T6 6061 Aluminum	
Seat Width & Depth	16"x16"	16"x18"
	18"x16"	18"x18"
	20"x16"	20"x18"
Back Height	Adjustable	17", 18", 19"
Seat Height	15.5", 16.5", 17.5", 18.5", 19.5"	
Upholstery Nylon	Padded Seat	Non-Padded Seat
	Padded Back w/wo Pocket	
Front Casters	6" Polyurethane	
	6" Solid	
	8" Polyurethane	
	8" Solid	
Rear Wheels with Aluminum Handrims	20" Full Profile Polyurethane	
	24" Low Profile Polyurethane	
Axles	Quick Release	
Armrest	Flip-Back, Desk or Full Flip-Back Height Adjustable, Desk or Full	
Front Hangers	Swing-Away with Heel Loops Elevating Legrest	
Maximum User Weight	250 lbs (113.4 kg)	
Color Options	Candy Blue, Black, Forest Green, Silver Texture, Silver Polish	
Accessories	Seat Belt, Auto Style	BZU9001
	IV Pole	BZU9003
	Tray Table, Full Arm	BZU9002
	Tray Table, Desk Arm	BZU9009
	Oxygen Tank Holder	BZU9004
	Crutch Holder	BZU9005
HCPCs Code	K0004 (meets requirements for)	

* 18"x16" Configuration without front hangers

BREEZY® *ultra⁴*

Quick Ship or Built-to-Order — The most popular configurations are stocked with front hangers in the box ready to ship allowing you to meet your customers' needs quickly with reduced inventory. We will also custom build a wheelchair with your choice of the available options.

Custom Configurations: Indicate your selection of standard features and options on the Breezy Ultra⁴ order form.

Quick-Ship: These popular configurations are packaged in one box, ready for shipment from Sunrise Medical distribution centers.

Quick Ship models include: 24" low-profile wheels with aluminum handrims, 8" polyurethane front casters, 17.5"-19.5" seat-to-floor height, nylon non-padded seat sling and back pocket.

Color	Size		Back	Flip Back Arm Style				Front Hangers		Option	
	Seat Width	Seat Depth		Fixed Ht. Padded Desk	Fixed Ht. Padded Full	Height-Adjustable Desk	Height-Adjustable Full	Swingaway Footrest	Elevating Legrest		
Silver Texture	B	16/18/20	16/18	Z	FAPD	FAPF	HAPD	HAPF	S	E	AT
Breezy Ultra⁴ 16"											
B1616FAPDS	•	16"	16"		•				•		
B1616FAPFS	•	16"	16"			•			•		
B1616FAPDE	•	16"	16"		•					•	
B1616FAPFE	•	16"	16"			•				•	
B1616HAPDSAT	•	16"	16"				•		•		•
B1616HAPFSAT	•	16"	16"					•	•		•
B1616HAPDEAT	•	16"	16"				•			•	•
B1616HAPFEAT	•	16"	16"					•		•	•
B1616ZHAPDSAT	•	16"	16"	•			•		•		•
B1616ZHAPFSAT	•	16"	16"	•				•	•		•
B1616ZHAPDEAT	•	16"	16"	•			•			•	•
B1616ZHAPFEAT	•	16"	16"	•				•		•	•
Breezy Ultra⁴ 18"											
B1816FAPDS	•	18"	16"		•				•		
B1816FAPFS	•	18"	16"			•			•		
B1816FAPDE	•	18"	16"		•					•	
B1816FAPFE	•	18"	16"			•				•	
B1816HAPDSAT	•	18"	16"				•		•		•
B1816HAPFSAT	•	18"	16"					•	•		•
B1816HAPDEAT	•	18"	16"				•			•	•
B1816HAPFEAT	•	18"	16"					•		•	•
B1816ZHAPDSAT	•	18"	16"	•			•		•		•
B1816ZHAPFSAT	•	18"	16"	•				•	•		•
B1816ZHAPDEAT	•	18"	16"	•			•			•	•
B1816ZHAPFEAT	•	18"	16"	•				•		•	•
Breezy Ultra⁴ 20"											
B2018FAPDS	•	20"	18"		•				•		
B2018FAPFS	•	20"	18"			•			•		
B2018FAPDE	•	20"	18"		•					•	
B2018FAPFE	•	20"	18"			•				•	
B2018HAPDSAT	•	20"	18"				•		•		•
B2018HAPFSAT	•	20"	18"					•	•		•
B2018HAPDEAT	•	20"	18"				•			•	•
B2018HAPFEAT	•	20"	18"					•		•	•
B2018ZHAPDSAT	•	20"	18"	•			•		•		•
B2018ZHAPFSAT	•	20"	18"	•				•	•		•
B2018ZHAPDEAT	•	20"	18"	•			•			•	•
B2018ZHAPFEAT	•	20"	18"	•				•		•	•