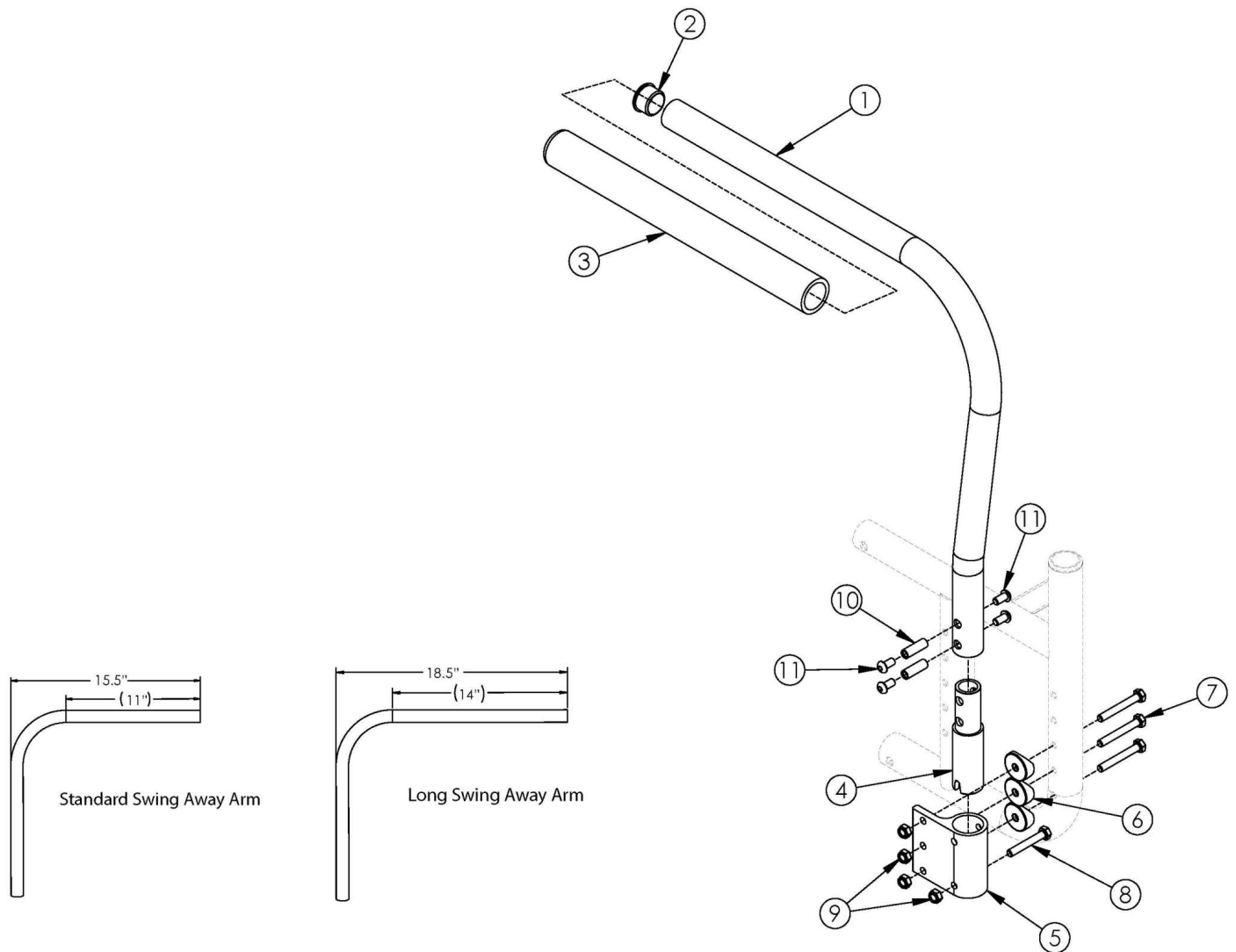


# Catalyst Swing Away Armrest



For call out #7 - please reference the "Catalyst Axle Plate" parts manual pages to ensure the proper hardware is selected for the chair configuration.

Item Number	Part Number	Description	Quantity	Retail
1a, 2-4, 10, 11	500500	Tubular Swing Away Armrest Assembly Left CAT	1	\$125.82
1b, 2-4, 10, 11	500501	Tubular Swing Away Armrest Assembly Right CAT	1	\$125.82
1a, 1b, 2-4, 10, 11	500588	Tubular Swing Away Armrest Assembly Pair CAT	1	\$251.62
1c, 2-4, 10, 11	501480	Tubular Long Swing Away Armrest Assembly Left CAT	1	\$125.82
1d, 2-4, 10, 11	501481	Tubular Long Swing Away Armrest Assembly Right CAT	1	\$125.82
1c, 1d, 2-4, 10, 11	501482	Tubular Long Swing Away Armrest Assembly Pair CAT	1	\$251.62

Item Number	Part Number	Description	Quantity	Retail
5, 6, 7, 8, 9	502283	Tubular Swing Away Armrest Receiver Kit CAT	1	\$57.02
1a, 2-11	502284	Tubular Swing Away Armrest w/ Receiver Kit Left CAT	1	\$182.37
1b, 2-11	502285	Tubular Swing Away Armrest w/ Receiver Kit Right CAT	1	\$182.37
1a, 1b, 2-11	502286	Tubular Swing Away Armrest w/ Receiver Kit PAIR CAT	1	\$364.72
1c, 2-11	502287	Tubular Long Swing Away Armrest w/ Receiver Kit Left CAT	1	\$178.68
1d, 2-11	502288	Tubular Long Swing Away Armrest w/ Receiver Kit Right CAT	1	\$178.68
1c, 1d, 2-11	502289	Tubular Long Swing Away Armrest w/ Receiver Kit PAIR CAT	1	\$357.37
2	100804	Tube End Plug 1"	1	\$1.58
4	000267	Armrest Swing Away Lower CAT	1	\$34.16
5	000044	Armrest Swing Away Receiver Cat	1	\$43.91
6	000056	Saddle 1 1/8"	3	\$1.58
7	100674	M6 x 45 CLS10.9 DIN931 HHCS ZC	3	\$1.58
8	100681	M6 x 40 CLS8.8 DIN931 HHCS ZC	1	\$1.58
9	100658	M6 Nylock Nut Blk Zn	4	\$1.05
10	000065	M6 x 23.68 Threaded Barrel	2	\$4.13
11	100667	M6 x 12 BTN SHCS BLKZC w/Patch	4	\$1.58