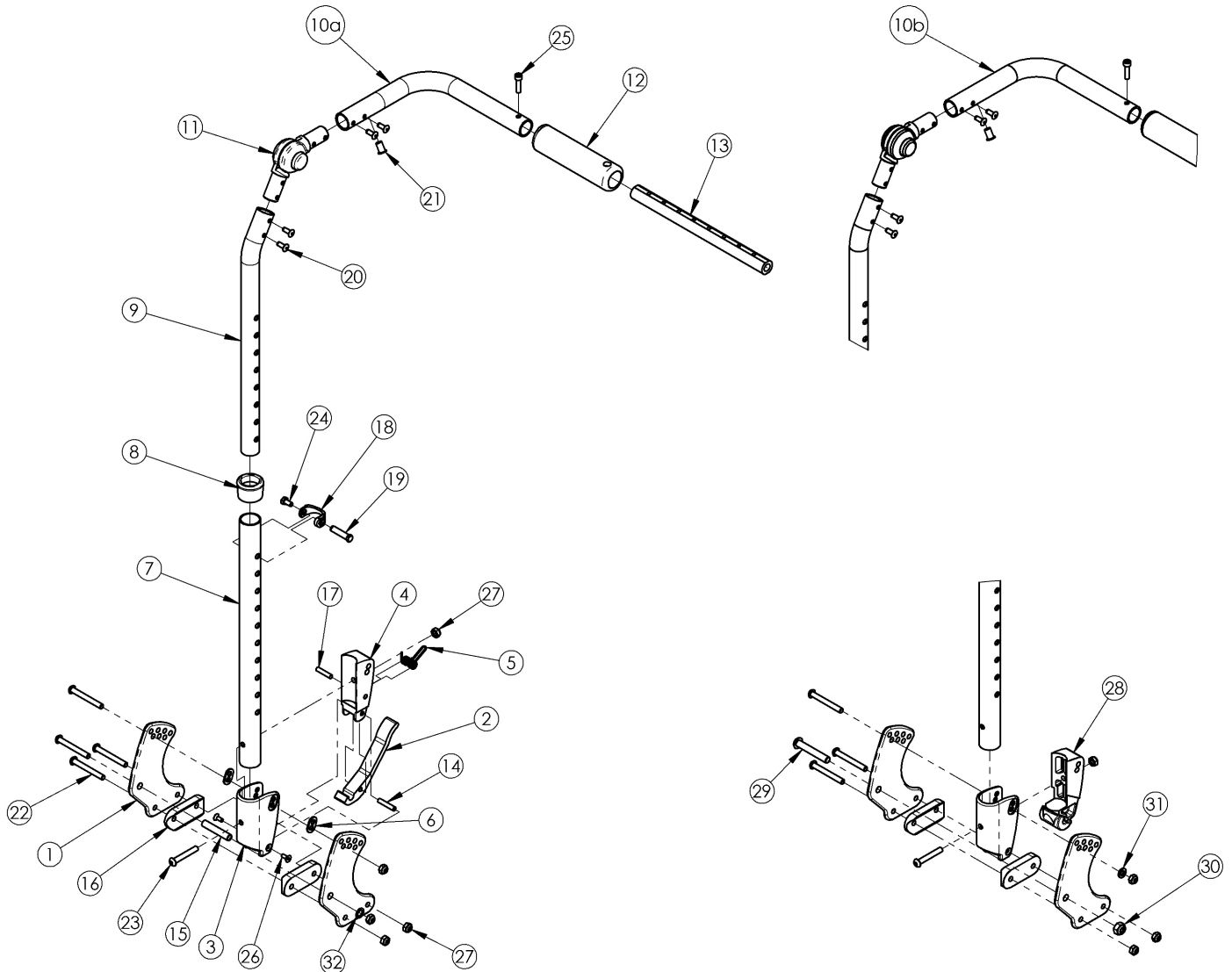


(Discontinued) Flip Adjustable Height with Adjustable Handle Backrest



Item Number	Part Number	Description	Quantity
1a, 6, 15, 16, 22, 27, 32	502819	Backrest Hardware Kit Std FLIP	1
1a, 1b, 6, 15, 16, 22, 27, 32	502820	Backrest Hardware Kit Std Transit (one side), FLIP	1
1a, 16, 22, 23, 27, 29-31	503027	Backrest Hardware Kit, Non Folding, Flip	1
1a, 1b, 16, 22, 23, 27, 29-31	503163	Backrest Hardware Kit Non-Folding (one side), Transit, Flip	1
2-6, 7a, 8, 14, 17-19, 22 - 24, 26, 27, 32	502663	Back Assembly w/Latch Insert Lower Tube Height Adjustable Short Focus/CR45/Flip	1

Item Number	Part Number	Description	Quantity
2-6, 7b, 8, 14, 17-19, 22 - 24, 26, 27, 32	502664	Back Assembly w/Latch Insert Lower Tube Height Adjustable Tall Focus/CR45/Flip	1
3, 7a, 8, 18, 19, 22 - 24, 27 - 31	502673	Lower Tube w/Latch Insert Height Adjustable Back Short Non-Folding Focus/CR45/Flip	1
3, 7b, 8, 18, 19, 22 - 24, 27 - 31	502674	Lower Tube w/Latch Insert Height Adjustable Back Tall Non-Folding Focus/CR45/Flip	1
13a, 25	503107	Growth Strut Assembly Short, Focus/Flip	1
1a	001890	Back Plate, Std	2
1b	001891	Back Plate, Transit	1
2	001893	Latch Lever, Backrest	1
3, 6	503834	Cover Plate, Latch Insert Kit	1
4	001895	Latch Insert, Folding Backrest	1
5	001896	Spring, Backrest Latch	1
6	001897	Washer, Dual, PSA	2
8	001083	Bushing Height Adjustable Back Tilt	1
13a	002578	Growth Strut, Stroller, Short	1
13b	002579	Growth Strut, Stroller, Long <i>Used only if growing chair from 13" wide or less to 14" wide or greater</i>	1
14	002513	Threaded Barrel, 5mm OD x M4	1
15	002738	Spacer .313 OD x .243 ID x 1.68 long	1
16	002595	Saddle, Dual, 1" OD X 1.5 SP	2
17	102694	Dowel Pin, M5 X 24, Blk Zn	1
18	000988	Fastener Retainer	1
19	000987	Threaded Fastener	1
22	101781	M6 x 50mm Partial Thread BHCS Blk ZC	4
23	100797	M6 x 40 BHCS BLK ZC	1
24	200427	M5 x 10 CLS8.8 HHCS ZC w/Patch DIN933	1
25	101843	M5 x 20 SHCS Blk Zn	1
26	101818	M4 x 10 FHCS BLKZC w/Patch	2

Item Number	Part Number	Description	Quantity
27	100658	M6 Nylock Nut Blk Zn	5
28	002035	Insert, Backrest, Non-Folding	1
29	101815	M8 x 50 BHCS Blk Zn	1
30	100659	M8 Nylock Nut Blk Zn	1
31	100746	M6 Flat Washer Blk Zn	1
32	101861	Nylon Washer 5/16 x 1/2 x .03	1