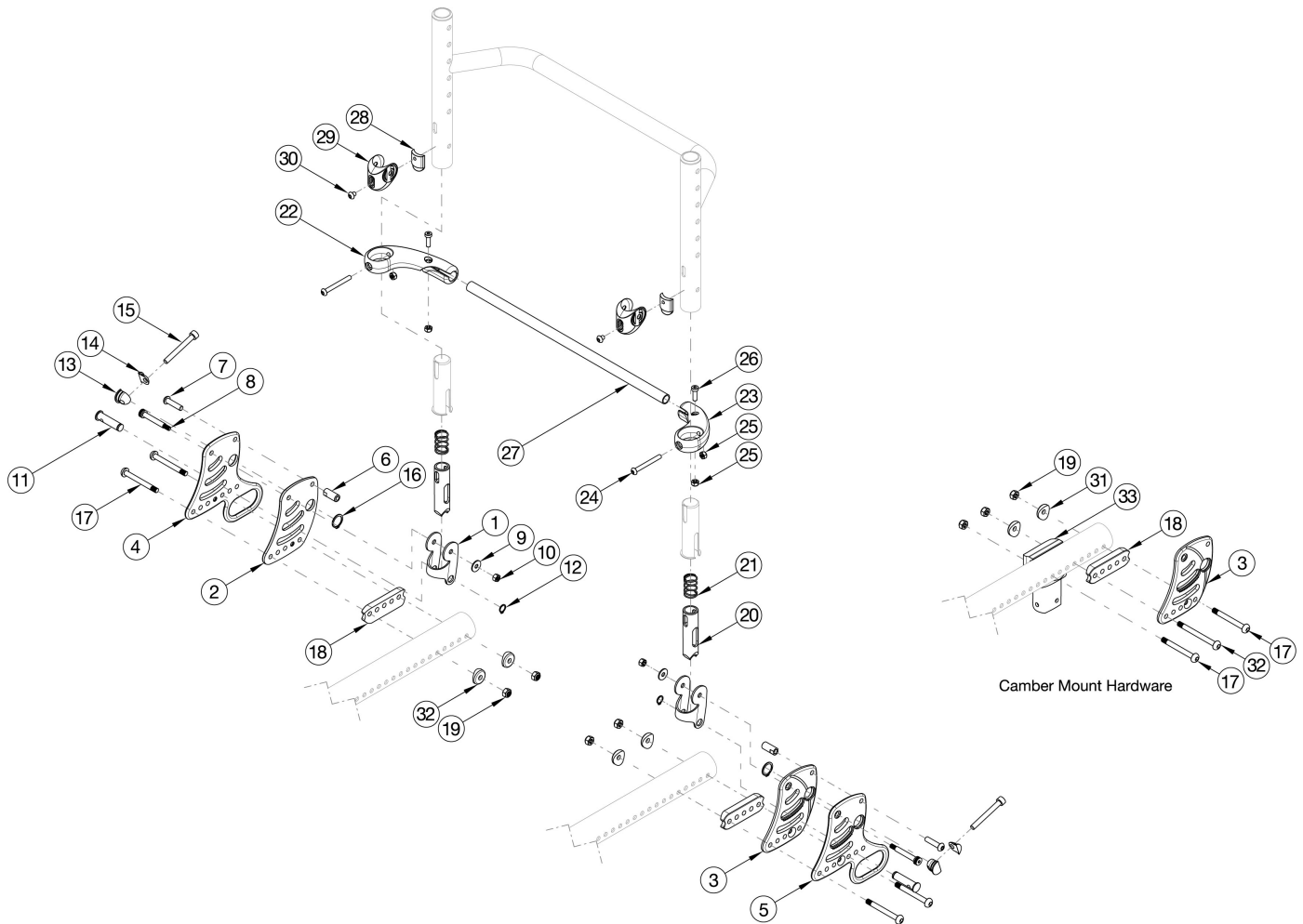


Rogue ALX Backrest Mount and Hardware



Utilize this page if chair has Rigid Locking Fold Down Back. Not available with the Rogue ALX Heavy Duty option. For a complete retrofit, select a Back Plate and Hardware Kit PAIR and Backrest Actuation Bar kit based on width. If retrofitting, new back canes will be needed. If retrofitting to a chair in the field that doesn't currently have a locking fold down back, a new frame is needed.

Item Number	Part Number	Description	Quantity
1 -3, 6 - 21, 28 - 31	117291	Back Plate and Hardware, Non-Transit, Black, Rogue ALX, Pair	1
1 -2, 6 - 19, 31	116909	Back Plate and Hardware, Non Transit, Black, Right, Rogue ALX	1
1, 3, 6 - 19, 31	116910	Back Plate and Hardware, Non Transit, Black, Left, Rogue ALX	1
1, 4 - 21, 28 - 31	117292	Back Plate and Hardware, Transit, Black, Rogue ALX, Pair	1
1, 4, 6 - 19, 31	116911	Back Plate and Hardware, Transit, Black, Right, Rogue ALX	1
1, 5 - 19, 31	116912	Back Plate and Hardware, Transit, Black, Left, Rogue ALX	1
28 - 30	116876	Relax Subassembly	1

Item Number	Part Number	Description	Quantity
22, 24 -26	116877	Release Lever with Fasteners, Right	1
23 - 26	116878	Release Lever with Fasteners, Left	1
22 - 26, 27a	116879	Backrest Actuation Bar Subassembly w/ Release Levers and Fasteners, 12" Wide, Black	1
22 - 26, 27b	116880	Backrest Actuation Bar Subassembly w/ Release Levers and Fasteners, 13" Wide, Black	1
22 - 26, 27c	116881	Backrest Actuation Bar Subassembly w/ Release Levers and Fasteners, 14" Wide, Black	1
22 - 26, 27d	116882	Backrest Actuation Bar Subassembly w/ Release Levers and Fasteners, 15" Wide, Black	1
22 - 26, 27e	116883	Backrest Actuation Bar Subassembly w/ Release Levers and Fasteners, 16" Wide, Black	1
22 - 26, 27f	116884	Backrest Actuation Bar Subassembly w/ Release Levers and Fasteners, 17" Wide, Black	1
22 - 26, 27g	116885	Backrest Actuation Bar Subassembly w/ Release Levers and Fasteners, 18" Wide, Black	1
22 - 26, 27h	116886	Backrest Actuation Bar Subassembly w/ Release Levers and Fasteners, 19" Wide, Black	1
22 - 26, 27i	116887	Backrest Actuation Bar Subassembly w/ Release Levers and Fasteners, 20" Wide, Black	1
4	115552	Back Plate, Transit, Right, Black	1
5	115553	Back Plate, Transit, Left, Black	1
6	115546	Strike, Ø.364	2
7	115573	M6 x 25, BHCS, CLS 10.9, NYL, BLZ	2
8	103284	M6 x 35 Shoulder Bolt BZ	2
9	103022	M5 Washer, Blk Zn	2
10	103283	M5 Top Lock Nut BZ	2
12	115570	Eternal Retaining Ring, 3/8"	2
15	115545	M6 x 1.0 x 50 SHCS, FT, NYL, BLZ	2
16	115571	Eternal Retaining Ring, 5/8"	2
17	003232	M6 x 55 BHCS Blk Zc	4
18	003715	Back Saddle 1 3/8" Tube	2
19	100658	M6 Nylock Nut Blk Zn	5
20	115539	Release Pin	2
21	115547	Compression Spring, .66" OD x 1" LG	2
24	000142	M5 x 45 BHCS, P/THD, BLZ	1

Item Number	Part Number	Description	Quantity
25	100657	M5 Nylock Nut Blk Zn	2
26	102801	M5 x 16, Low SHCS, Blk Zn	4
27a	115554	Backrest Actuation Bar, 12" Wide, Black	2
27b	115555	Backrest Actuation Bar, 13" Wide, Black	1
27c	115556	Backrest Actuation Bar, 14" Wide, Black	1
27d	115557	Backrest Actuation Bar, 15" Wide, Black	1
27e	115558	Backrest Actuation Bar, 16" Wide, Black	1
27f	115559	Backrest Actuation Bar, 17" Wide, Black	1
27h	115560	Backrest Actuation Bar, 18" Wide, Black	1
27h	115561	Backrest Actuation Bar, 19" Wide, Black	1
27i	115562	Backrest Actuation Bar, 20" Wide, Black	1
28	115549	Relax Bumper	2
29	115548	Relax Saddle	2
30	115572	M5 x 0.8 x 6 BHCS BLZ, CLS 10.9	2
31	003716	Saddle 1 3/8" Tube	2
32	107138	M6 x 65, BHCS, P/THD BLZ	3
33	000406	Camber Mount Tower Medium, RG ALX	1