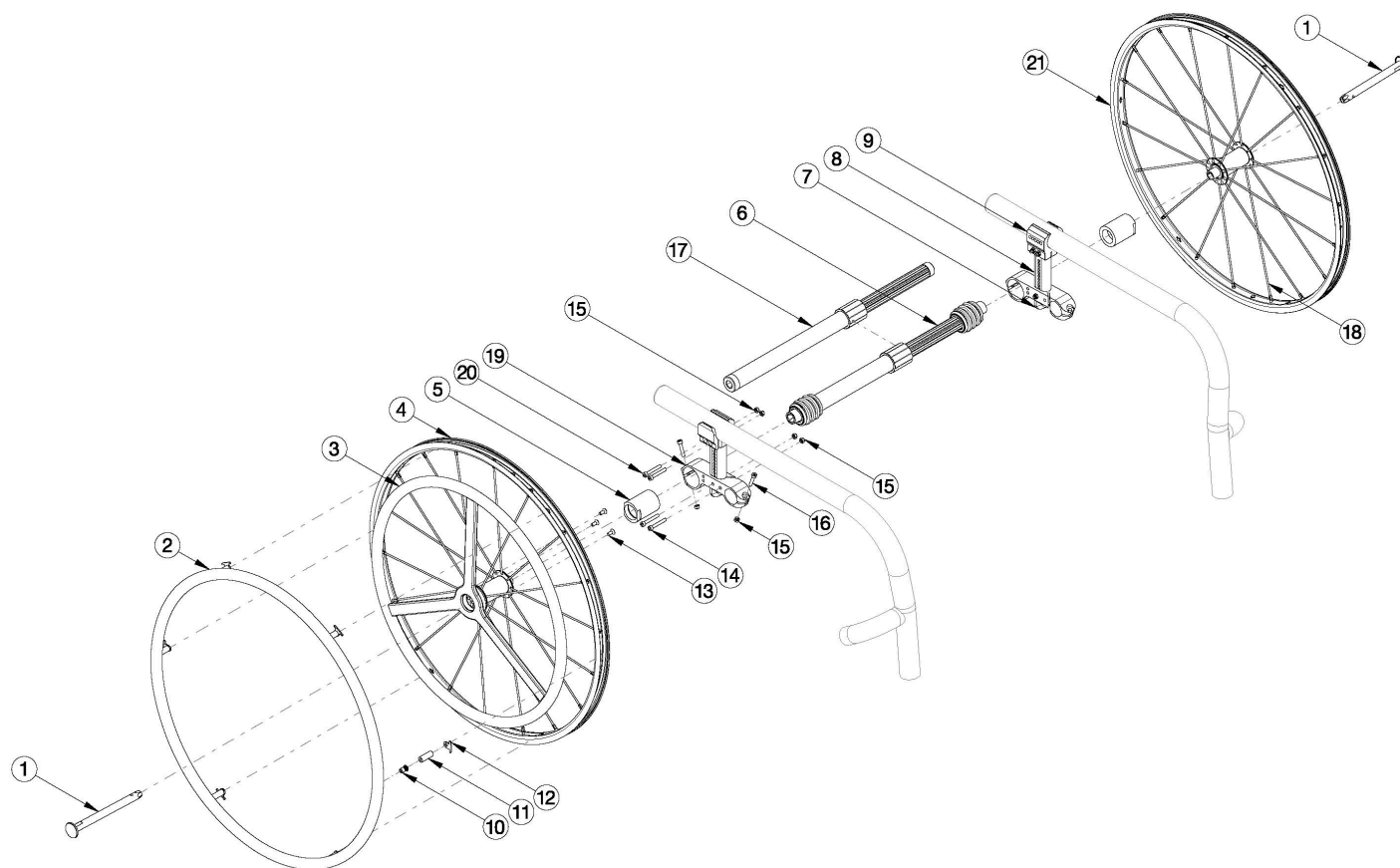


Rogue / Rogue XP One Arm Drive Quick Release



<p> One Arm Drive kits do not include rear tires</p>

If retrofitting to add the One Arm Drive, new rear towers are required in addition to the complete One Arm Drive system.

Item Number	Part Number	Description	Quantity	Retail
1, 2a, 3a, 4a, 5a, 10-16, 17a, 19, 21a	112663	Rogue Quick Release One Arm Drive Retrofit Kit, 0° Camber, 20" Spoke with Aluminum Drive Handrim, 177-255mm Drive Shaft	1	\$1,844.46
1, 2a, 3a, 4a, 5a, 10-16, 17b, 19, 21a	112664	Rogue Quick Release One Arm Drive Retrofit Kit, 0° Camber, 20" Spoke with Aluminum Drive Handrim, 225-295mm Drive Shaft	1	\$1,844.46
1, 2a, 3a, 4a, 5a, 10-16, 17c, 19, 21a	112665	Rogue Quick Release One Arm Drive Retrofit Kit, 0° Camber, 20" Spoke with Aluminum Drive Handrim, 260-370mm Drive Shaft	1	\$1,844.46
1, 2a, 3a, 4a, 5a, 10-16, 17d, 19, 21a	112666	Rogue Quick Release One Arm Drive Retrofit Kit, 0° Camber, 20" Spoke with Aluminum Drive Handrim, 330-440mm Drive Shaft	1	\$1,844.46
1, 2a, 3a, 4a, 5a, 10-16, 17e, 19, 21a	112667	Rogue Quick Release One Arm Drive Retrofit Kit, 0° Camber, 20" Spoke with Aluminum Drive Handrim, 421-491mm Drive Shaft	1	\$1,844.46
1, 2a, 3a, 4a, 5b, 6a, 10-16, 19, 21a	112668	Rogue Quick Release One Arm Drive Retrofit Kit, 2° Camber, 20" Spoke with Aluminum Drive Handrim, 170-195mm Drive Shaft	1	\$2,009.88

Item Number	Part Number	Description	Quantity	Retail
1, 2a, 3a, 4a, 5b, 6b, 10-16, 19, 21a	112669	Rogue Quick Release One Arm Drive Retrofit Kit, 2° Camber, 20" Spoke with Aluminum Drive Handrim, 180-210mm Drive Shaft	1	\$2,009.88
1, 2a, 3a, 4a, 5b, 6c, 10-16, 19, 21a	112670	Rogue Quick Release One Arm Drive Retrofit Kit, 2° Camber, 20" Spoke with Aluminum Drive Handrim, 195-235mm Drive Shaft	1	\$2,009.88
1, 2a, 3a, 4a, 5b, 6d, 10-16, 19, 21a	112671	Rogue Quick Release One Arm Drive Retrofit Kit, 2° Camber, 20" Spoke with Aluminum Drive Handrim, 220-280mm Drive Shaft	1	\$1,956.33
1, 2a, 3a, 4a, 5b, 6e, 10-16, 19, 21a	112672	Rogue Quick Release One Arm Drive Retrofit Kit, 2° Camber, 20" Spoke with Aluminum Drive Handrim, 270-330mm Drive Shaft	1	\$1,956.33
1, 2a, 3a, 4a, 5b, 6f, 10-16, 19, 21a	112673	Rogue Quick Release One Arm Drive Retrofit Kit, 2° Camber, 20" Spoke with Aluminum Drive Handrim, 295-370mm Drive Shaft	1	\$1,956.33
1, 2a, 3a, 4a, 5b, 6g, 10-16, 19, 21a	112674	Rogue Quick Release One Arm Drive Retrofit Kit, 2° Camber, 20" Spoke with Aluminum Drive Handrim, 350-460mm Drive Shaft	1	\$1,956.33
1, 2a, 3a, 4a, 5b, 6h, 10-16, 19, 21a	112675	Rogue Quick Release One Arm Drive Retrofit Kit, 2° Camber, 20" Spoke with Aluminum Drive Handrim, 420-530mm Drive Shaft	1	\$1,956.33
1, 2a, 3a, 4a, 5c, 6c, 10-16, 19, 21a	112676	Rogue Quick Release One Arm Drive Retrofit Kit, 4° Camber, 20" Spoke with Aluminum Drive Handrim, 195-235mm Drive Shaft	1	\$2,009.88
1, 2a, 3a, 4a, 5c, 6d, 10-16, 19, 21a	112677	Rogue Quick Release One Arm Drive Retrofit Kit, 4° Camber, 20" Spoke with Aluminum Drive Handrim, 220-280mm Drive Shaft	1	\$2,009.88
1, 2a, 3a, 4a, 5c, 6e, 10-16, 19, 21a	112678	Rogue Quick Release One Arm Drive Retrofit Kit, 4° Camber, 20" Spoke with Aluminum Drive Handrim, 270-330mm Drive Shaft	1	\$2,009.88
1, 2a, 3a, 4a, 5c, 6f, 10-16, 19, 21a	112679	Rogue Quick Release One Arm Drive Retrofit Kit, 4° Camber, 20" Spoke with Aluminum Drive Handrim, 295-370mm Drive Shaft	1	\$2,009.88
1, 2a, 3a, 4a, 5c, 6g, 10-16, 19, 21a	112680	Rogue Quick Release One Arm Drive Retrofit Kit, 4° Camber, 20" Spoke with Aluminum Drive Handrim, 350-460mm Drive Shaft	1	\$2,009.88
1, 2b, 3b, 4b, 5a, 10-16, 17a, 19, 21b	112681	Rogue Quick Release One Arm Drive Retrofit Kit, 0° Camber, 22" Spoke with Aluminum Drive Handrim, 177-255mm Drive Shaft	1	\$1,836.74
1, 2b, 3b, 4b, 5a, 10-16, 17b, 19, 21b	112682	Rogue Quick Release One Arm Drive Retrofit Kit, 0° Camber, 22" Spoke with Aluminum Drive Handrim, 225-295mm Drive Shaft	1	\$1,836.74
1, 2b, 3b, 4b, 5a, 10-16, 17c, 19, 21b	112683	Rogue Quick Release One Arm Drive Retrofit Kit, 0° Camber, 22" Spoke with Aluminum Drive Handrim, 260-370mm Drive Shaft	1	\$1,836.74
1, 2b, 3b, 4b, 5a, 10-16, 17d, 19, 21b	112684	Rogue Quick Release One Arm Drive Retrofit Kit, 0° Camber, 22" Spoke with Aluminum Drive Handrim, 330-440mm Drive Shaft	1	\$1,836.74
1, 2b, 3b, 4b, 5a, 10-16, 17e, 19, 21b	112685	Rogue Quick Release One Arm Drive Retrofit Kit, 0° Camber, 22" Spoke with Aluminum Drive Handrim, 421-491mm Drive Shaft	1	\$1,836.74
1, 2b, 3b, 4b, 5b, 6a, 10-16, 19, 21b	112686	Rogue Quick Release One Arm Drive Retrofit Kit, 2° Camber, 22" Spoke with Aluminum Drive Handrim, 170-195mm Drive Shaft	1	\$2,002.16
1, 2b, 3b, 4b, 5b, 6b, 10-16, 19, 21b	112687	Rogue Quick Release One Arm Drive Retrofit Kit, 2° Camber, 22" Spoke with Aluminum Drive Handrim, 180-210mm Drive Shaft	1	\$2,002.16

Item Number	Part Number	Description	Quantity	Retail
1, 2b, 3b, 4b, 5b, 6c, 10-16, 19, 21b	112688	Rogue Quick Release One Arm Drive Retrofit Kit, 2° Camber, 22" Spoke with Aluminum Drive Handrim, 195-235mm Drive Shaft	1	\$2,002.16
1, 2b, 3b, 4b, 5b, 6d, 10-16, 19, 21b	112689	Rogue Quick Release One Arm Drive Retrofit Kit, 2° Camber, 22" Spoke with Aluminum Drive Handrim, 220-280mm Drive Shaft	1	\$1,948.61
1, 2b, 3b, 4b, 5b, 6e, 10-16, 19, 21b	112690	Rogue Quick Release One Arm Drive Retrofit Kit, 2° Camber, 22" Spoke with Aluminum Drive Handrim, 270-330mm Drive Shaft	1	\$1,948.61
1, 2b, 3b, 4b, 5b, 6f, 10-16, 19, 21b	112691	Rogue Quick Release One Arm Drive Retrofit Kit, 2° Camber, 22" Spoke with Aluminum Drive Handrim, 295-370mm Drive Shaft	1	\$1,948.61
1, 2b, 3b, 4b, 5b, 6g, 10-16, 19, 21b	112692	Rogue Quick Release One Arm Drive Retrofit Kit, 2° Camber, 22" Spoke with Aluminum Drive Handrim, 350-460mm Drive Shaft	1	\$1,948.61
1, 2b, 3b, 4b, 5b, 6h, 10-16, 19, 21b	112693	Rogue Quick Release One Arm Drive Retrofit Kit, 2° Camber, 22" Spoke with Aluminum Drive Handrim, 420-530mm Drive Shaft	1	\$1,948.61
1, 2b, 3b, 4b, 5c, 6c, 10-16, 19, 21b	112694	Rogue Quick Release One Arm Drive Retrofit Kit, 4° Camber, 22" Spoke with Aluminum Drive Handrim, 195-235mm Drive Shaft	1	\$2,002.16
1, 2b, 3b, 4b, 5c, 6d, 10-16, 19, 21b	112695	Rogue Quick Release One Arm Drive Retrofit Kit, 4° Camber, 22" Spoke with Aluminum Drive Handrim, 220-280mm Drive Shaft	1	\$1,948.61
1, 2b, 3b, 4b, 5c, 6e, 10-16, 19, 21b	112696	Rogue Quick Release One Arm Drive Retrofit Kit, 4° Camber, 22" Spoke with Aluminum Drive Handrim, 270-330mm Drive Shaft	1	\$1,948.61
1, 2b, 3b, 4b, 5c, 6f, 10-16, 19, 21b	112697	Rogue Quick Release One Arm Drive Retrofit Kit, 4° Camber, 22" Spoke with Aluminum Drive Handrim, 295-370mm Drive Shaft	1	\$1,948.61
1, 2b, 3b, 4b, 5c, 6g, 10-16, 19, 21b	112698	Rogue Quick Release One Arm Drive Retrofit Kit, 4° Camber, 22" Spoke with Aluminum Drive Handrim, 350-460mm Drive Shaft	1	\$1,948.61
1, 2c, 3c, 4c, 5a, 10-16, 17a, 19, 21c	112699	Rogue Quick Release One Arm Drive Retrofit Kit, 0° Camber, 24" Spoke with Aluminum Drive Handrim, 177-255mm Drive Shaft	1	\$1,842.26
1, 2c, 3c, 4c, 5a, 10-16, 17b, 19, 21c	112700	Rogue Quick Release One Arm Drive Retrofit Kit, 0° Camber, 24" Spoke with Aluminum Drive Handrim, 225-295mm Drive Shaft	1	\$1,842.26
1, 2c, 3c, 4c, 5a, 10-16, 17c, 19, 21c	112701	Rogue Quick Release One Arm Drive Retrofit Kit, 0° Camber, 24" Spoke with Aluminum Drive Handrim, 260-370mm Drive Shaft	1	\$1,842.26
1, 2c, 3c, 4c, 5a, 10-16, 17d, 19, 21c	112702	Rogue Quick Release One Arm Drive Retrofit Kit, 0° Camber, 24" Spoke with Aluminum Drive Handrim, 330-440mm Drive Shaft	1	\$1,842.26
1, 2c, 3c, 4c, 5a, 10-16, 17e, 19, 21c	112703	Rogue Quick Release One Arm Drive Retrofit Kit, 0° Camber, 24" Spoke with Aluminum Drive Handrim, 421-491mm Drive Shaft	1	\$1,842.26
1, 2c, 3c, 4c, 5b, 6a, 10-16, 19, 21c	112704	Rogue Quick Release One Arm Drive Retrofit Kit, 2° Camber, 24" Spoke with Aluminum Drive Handrim, 170-195mm Drive Shaft	1	\$2,007.67
1, 2c, 3c, 4c, 5b, 6b, 10-16, 19, 21c	112705	Rogue Quick Release One Arm Drive Retrofit Kit, 2° Camber, 24" Spoke with Aluminum Drive Handrim, 180-210mm Drive Shaft	1	\$2,007.67
1, 2c, 3c, 4c, 5b, 6c, 10-16, 19, 21c	112706	Rogue Quick Release One Arm Drive Retrofit Kit, 2° Camber, 24" Spoke with Aluminum Drive Handrim, 195-235mm Drive Shaft	1	\$2,007.67

Item Number	Part Number	Description	Quantity	Retail
1, 2c, 3c, 4c, 5b, 6d, 10-16, 19, 21c	112707	Rogue Quick Release One Arm Drive Retrofit Kit, 2° Camber, 24" Spoke with Aluminum Drive Handrim, 220-280mm Drive Shaft	1	\$1,954.12
1, 2c, 3c, 4c, 5b, 6e, 10-16, 19, 21c	112708	Rogue Quick Release One Arm Drive Retrofit Kit, 2° Camber, 24" Spoke with Aluminum Drive Handrim, 270-330mm Drive Shaft	1	\$1,954.12
1, 2c, 3c, 4c, 5b, 6f, 10-16, 19, 21c	112709	Rogue Quick Release One Arm Drive Retrofit Kit, 2° Camber, 24" Spoke with Aluminum Drive Handrim, 295-370mm Drive Shaft	1	\$1,954.12
1, 2c, 3c, 4c, 5b, 6g, 10-16, 19, 21c	112710	Rogue Quick Release One Arm Drive Retrofit Kit, 2° Camber, 24" Spoke with Aluminum Drive Handrim, 350-460mm Drive Shaft	1	\$1,954.12
1, 2c, 3c, 4c, 5b, 6h, 10-16, 19, 21c	112711	Rogue Quick Release One Arm Drive Retrofit Kit, 2° Camber, 24" Spoke with Aluminum Drive Handrim, 420-530mm Drive Shaft	1	\$1,954.12
1, 2c, 3c, 4c, 5c, 6c, 10-16, 19, 21c	112712	Rogue Quick Release One Arm Drive Retrofit Kit, 4° Camber, 24" Spoke with Aluminum Drive Handrim, 195-235mm Drive Shaft	1	\$2,007.67
1, 2c, 3c, 4c, 5c, 6d, 10-16, 19, 21c	112713	Rogue Quick Release One Arm Drive Retrofit Kit, 4° Camber, 24" Spoke with Aluminum Drive Handrim, 220-280mm Drive Shaft	1	\$1,954.12
1, 2c, 3c, 4c, 5c, 6e, 10-16, 19, 21c	112714	Rogue Quick Release One Arm Drive Retrofit Kit, 4° Camber, 24" Spoke with Aluminum Drive Handrim, 270-330mm Drive Shaft	1	\$1,954.12
1, 2c, 3c, 4c, 5c, 6f, 10-16, 19, 21c	112715	Rogue Quick Release One Arm Drive Retrofit Kit, 4° Camber, 24" Spoke with Aluminum Drive Handrim, 295-370mm Drive Shaft	1	\$1,954.12
1, 2c, 3c, 4c, 5c, 6g, 10-16, 19, 21c	112716	Rogue Quick Release One Arm Drive Retrofit Kit, 4° Camber, 24" Spoke with Aluminum Drive Handrim, 350-460mm Drive Shaft	1	\$1,954.12
1, 2a, 3d, 4a, 5a, 10-16, 17a, 19, 21a	115134	Rogue Quick Release One Arm Drive Retrofit Kit, 0° Camber, 20" Spoke with Poly Coated Drive Handrim, 177-255mm Drive Shaft	1	\$1,965.21
1, 2a, 3d, 4a, 5a, 10-16, 17b, 19, 21a	115135	Rogue Quick Release One Arm Drive Retrofit Kit, 0° Camber, 20" Spoke with Poly Coated Drive Handrim, 225-295mm Drive Shaft	1	\$1,965.21
1, 2a, 3d, 4a, 5a, 10-16, 17c, 19, 21a	115136	Rogue Quick Release One Arm Drive Retrofit Kit, 0° Camber, 20" Spoke with Poly Coated Drive Handrim, 260-370mm Drive Shaft	1	\$1,965.21
1, 2a, 3d, 4a, 5a, 10-16, 17d, 19, 21a	115137	Rogue Quick Release One Arm Drive Retrofit Kit, 0° Camber, 20" Spoke with Poly Coated Drive Handrim, 330-440mm Drive Shaft	1	\$1,965.21
1, 2a, 3d, 4a, 5a, 10-16, 17e, 19, 21a	115138	Rogue Quick Release One Arm Drive Retrofit Kit, 0° Camber, 20" Spoke with Poly Coated Drive Handrim, 421-491mm Drive Shaft	1	\$1,965.21
1, 2a, 3d, 4a, 5b, 6a, 10-16, 19, 21a	115139	Rogue Quick Release One Arm Drive Retrofit Kit, 2° Camber, 20" Spoke with Poly Coated Drive Handrim, 170-195mm Drive Shaft	1	\$2,130.63
1, 2a, 3d, 4a, 5b, 6b, 10-16, 19, 21a	115140	Rogue Quick Release One Arm Drive Retrofit Kit, 2° Camber, 20" Spoke with Poly Coated Drive Handrim, 180-210mm Drive Shaft	1	\$2,130.63
1, 2a, 3d, 4a, 5b, 6c, 10-16, 19, 21a	115141	Rogue Quick Release One Arm Drive Retrofit Kit, 2° Camber, 20" Spoke with Poly Coated Drive Handrim, 195-235mm Drive Shaft	1	\$2,130.63
1, 2a, 3d, 4a, 5b, 6d, 10-16, 19, 21a	115142	Rogue Quick Release One Arm Drive Retrofit Kit, 2° Camber, 20" Spoke with Poly Coated Drive Handrim, 220-280mm Drive Shaft	1	\$2,077.08

Item Number	Part Number	Description	Quantity	Retail
1, 2a, 3d, 4a, 5b, 6e, 10-16, 19, 21a	115143	Rogue Quick Release One Arm Drive Retrofit Kit, 2° Camber, 20" Spoke with Poly Coated Drive Handrim, 270-330mm Drive Shaft	1	\$2,077.08
1, 2a, 3d, 4a, 5b, 6f, 10-16, 19, 21a	115144	Rogue Quick Release One Arm Drive Retrofit Kit, 2° Camber, 20" Spoke with Poly Coated Drive Handrim, 295-370mm Drive Shaft	1	\$2,077.08
1, 2a, 3d, 4a, 5b, 6g, 10-16, 19, 21a	115145	Rogue Quick Release One Arm Drive Retrofit Kit, 2° Camber, 20" Spoke with Poly Coated Drive Handrim, 350-460mm Drive Shaft	1	\$2,077.08
1, 2a, 3d, 4a, 5b, 6h, 10-16, 19, 21a	115146	Rogue Quick Release One Arm Drive Retrofit Kit, 2° Camber, 20" Spoke with Poly Coated Drive Handrim, 420-530mm Drive Shaft	1	\$2,077.08
1, 2a, 3d, 4a, 5c, 6c, 10-16, 19, 21a	115147	Rogue Quick Release One Arm Drive Retrofit Kit, 4° Camber, 20" Spoke with Poly Coated Drive Handrim, 195-235mm Drive Shaft	1	\$2,130.63
1, 2a, 3d, 4a, 5c, 6d, 10-16, 19, 21a	115148	Rogue Quick Release One Arm Drive Retrofit Kit, 4° Camber, 20" Spoke with Poly Coated Drive Handrim, 220-280mm Drive Shaft	1	\$2,130.63
1, 2a, 3d, 4a, 5c, 6e, 10-16, 19, 21a	115149	Rogue Quick Release One Arm Drive Retrofit Kit, 4° Camber, 20" Spoke with Poly Coated Drive Handrim, 270-330mm Drive Shaft	1	\$2,130.63
1, 2a, 3d, 4a, 5c, 6f, 10-16, 19, 21a	115150	Rogue Quick Release One Arm Drive Retrofit Kit, 4° Camber, 20" Spoke with Poly Coated Drive Handrim, 295-370mm Drive Shaft	1	\$2,130.63
1, 2a, 3d, 4a, 5c, 6g, 10-16, 19, 21a	115151	Rogue Quick Release One Arm Drive Retrofit Kit, 4° Camber, 20" Spoke with Poly Coated Drive Handrim, 350-460mm Drive Shaft	1	\$2,130.63
1, 2b, 3e, 4b, 5a, 10-16, 17a, 19, 21b	115152	Rogue Quick Release One Arm Drive Retrofit Kit, 0° Camber, 22" Spoke with Poly Coated Drive Handrim, 177-255mm Drive Shaft	1	\$1,957.49
1, 2b, 3e, 4b, 5a, 10-16, 17b, 19, 21b	115153	Rogue Quick Release One Arm Drive Retrofit Kit, 0° Camber, 22" Spoke with Poly Coated Drive Handrim, 225-295mm Drive Shaft	1	\$1,957.49
1, 2b, 3e, 4b, 5a, 10-16, 17c, 19, 21b	115154	Rogue Quick Release One Arm Drive Retrofit Kit, 0° Camber, 22" Spoke with Poly Coated Drive Handrim, 260-370mm Drive Shaft	1	\$1,957.49
1, 2b, 3e, 4b, 5a, 10-16, 17d, 19, 21b	115155	Rogue Quick Release One Arm Drive Retrofit Kit, 0° Camber, 22" Spoke with Poly Coated Drive Handrim, 330-440mm Drive Shaft	1	\$1,957.49
1, 2b, 3e, 4b, 5a, 10-16, 17e, 19, 21b	115156	Rogue Quick Release One Arm Drive Retrofit Kit, 0° Camber, 22" Spoke with Poly Coated Drive Handrim, 421-491mm Drive Shaft	1	\$1,957.49
1, 2b, 3e, 4b, 5b, 6a, 10-16, 19, 21b	115157	Rogue Quick Release One Arm Drive Retrofit Kit, 2° Camber, 22" Spoke with Poly Coated Drive Handrim, 170-195mm Drive Shaft	1	\$2,122.91
1, 2b, 3e, 4b, 5b, 6b, 10-16, 19, 21b	115158	Rogue Quick Release One Arm Drive Retrofit Kit, 2° Camber, 22" Spoke with Poly Coated Drive Handrim, 180-210mm Drive Shaft	1	\$2,122.91
1, 2b, 3e, 4b, 5b, 6c, 10-16, 19, 21b	115159	Rogue Quick Release One Arm Drive Retrofit Kit, 2° Camber, 22" Spoke with Poly Coated Drive Handrim, 195-235mm Drive Shaft	1	\$2,122.91
1, 2b, 3e, 4b, 5b, 6d, 10-16, 19, 21b	115160	Rogue Quick Release One Arm Drive Retrofit Kit, 2° Camber, 22" Spoke with Poly Coated Drive Handrim, 220-280mm Drive Shaft	1	\$2,069.36
1, 2b, 3e, 4b, 5b, 6e, 10-16, 19, 21b	115161	Rogue Quick Release One Arm Drive Retrofit Kit, 2° Camber, 22" Spoke with Poly Coated Drive Handrim, 270-330mm Drive Shaft	1	\$2,069.36

Item Number	Part Number	Description	Quantity	Retail
1, 2b, 3e, 4b, 5b, 6f, 10-16, 19, 21b	115162	Rogue Quick Release One Arm Drive Retrofit Kit, 2° Camber, 22" Spoke with Poly Coated Drive Handrim, 295-370mm Drive Shaft	1	\$2,069.36
1, 2b, 3e, 4b, 5b, 6g, 10-16, 19, 21b	115163	Rogue Quick Release One Arm Drive Retrofit Kit, 2° Camber, 22" Spoke with Poly Coated Drive Handrim, 350-460mm Drive Shaft	1	\$2,069.36
1, 2b, 3e, 4b, 5b, 6h, 10-16, 19, 21b	115164	Rogue Quick Release One Arm Drive Retrofit Kit, 2° Camber, 22" Spoke with Poly Coated Drive Handrim, 420-530mm Drive Shaft	1	\$2,069.36
1, 2b, 3e, 4b, 5c, 6c, 10-16, 19, 21b	115165	Rogue Quick Release One Arm Drive Retrofit Kit, 4° Camber, 22" Spoke with Poly Coated Drive Handrim, 195-235mm Drive Shaft	1	\$2,122.91
1, 2b, 3e, 4b, 5c, 6d, 10-16, 19, 21b	115166	Rogue Quick Release One Arm Drive Retrofit Kit, 4° Camber, 22" Spoke with Poly Coated Drive Handrim, 220-280mm Drive Shaft	1	\$2,069.36
1, 2b, 3e, 4b, 5c, 6e, 10-16, 19, 21b	115167	Rogue Quick Release One Arm Drive Retrofit Kit, 4° Camber, 22" Spoke with Poly Coated Drive Handrim, 270-330mm Drive Shaft	1	\$2,069.36
1, 2b, 3e, 4b, 5c, 6f, 10-16, 19, 21b	115168	Rogue Quick Release One Arm Drive Retrofit Kit, 4° Camber, 22" Spoke with Poly Coated Drive Handrim, 295-370mm Drive Shaft	1	\$2,069.36
1, 2b, 3e, 4b, 5c, 6g, 10-16, 19, 21b	115169	Rogue Quick Release One Arm Drive Retrofit Kit, 4° Camber, 22" Spoke with Poly Coated Drive Handrim, 350-460mm Drive Shaft	1	\$2,069.36
1, 2c, 3f, 4c, 5a, 10-16, 17a, 19, 21c	115170	Rogue Quick Release One Arm Drive Retrofit Kit, 0° Camber, 24" Spoke with Poly Coated Drive Handrim, 177-255mm Drive Shaft	1	\$1,963.01
1, 2c, 3f, 4c, 5a, 10-16, 17b, 19, 21c	115171	Rogue Quick Release One Arm Drive Retrofit Kit, 0° Camber, 24" Spoke with Poly Coated Drive Handrim, 225-295mm Drive Shaft	1	\$1,963.01
1, 2c, 3f, 4c, 5a, 10-16, 17c, 19, 21c	115172	Rogue Quick Release One Arm Drive Retrofit Kit, 0° Camber, 24" Spoke with Poly Coated Drive Handrim, 260-370mm Drive Shaft	1	\$1,963.01
1, 2c, 3f, 4c, 5a, 10-16, 17d, 19, 21c	115173	Rogue Quick Release One Arm Drive Retrofit Kit, 0° Camber, 24" Spoke with Poly Coated Drive Handrim, 330-440mm Drive Shaft	1	\$1,963.01
1, 2c, 3f, 4c, 5a, 10-16, 17e, 19, 21c	115174	Rogue Quick Release One Arm Drive Retrofit Kit, 0° Camber, 24" Spoke with Poly Coated Drive Handrim, 421-491mm Drive Shaft	1	\$1,963.01
1, 2c, 3f, 4c, 5b, 6a, 10-16, 19, 21c	115175	Rogue Quick Release One Arm Drive Retrofit Kit, 2° Camber, 24" Spoke with Poly Coated Drive Handrim, 170-195mm Drive Shaft	1	\$2,128.42
1, 2c, 3f, 4c, 5b, 6b, 10-16, 19, 21c	115176	Rogue Quick Release One Arm Drive Retrofit Kit, 2° Camber, 24" Spoke with Poly Coated Drive Handrim, 180-210mm Drive Shaft	1	\$2,128.42
1, 2c, 3f, 4c, 5b, 6c, 10-16, 19, 21c	115177	Rogue Quick Release One Arm Drive Retrofit Kit, 2° Camber, 24" Spoke with Poly Coated Drive Handrim, 195-235mm Drive Shaft	1	\$2,128.42
1, 2c, 3f, 4c, 5b, 6d, 10-16, 19, 21c	115178	Rogue Quick Release One Arm Drive Retrofit Kit, 2° Camber, 24" Spoke with Poly Coated Drive Handrim, 220-280mm Drive Shaft	1	\$2,074.87
1, 2c, 3f, 4c, 5b, 6e, 10-16, 19, 21c	115179	Rogue Quick Release One Arm Drive Retrofit Kit, 2° Camber, 24" Spoke with Poly Coated Drive Handrim, 270-330mm Drive Shaft	1	\$2,074.87
1, 2c, 3f, 4c, 5b, 6f, 10-16, 19, 21c	115180	Rogue Quick Release One Arm Drive Retrofit Kit, 2° Camber, 24" Spoke with Poly Coated Drive Handrim, 295-370mm Drive Shaft	1	\$2,074.87

Item Number	Part Number	Description	Quantity	Retail
1, 2c, 3f, 4c, 5b, 6g, 10-16, 19, 21c	115181	Rogue Quick Release One Arm Drive Retrofit Kit, 2° Camber, 24" Spoke with Poly Coated Drive Handrim, 350-460mm Drive Shaft	1	\$2,074.87
1, 2c, 3f, 4c, 5b, 6h, 10-16, 19, 21c	115182	Rogue Quick Release One Arm Drive Retrofit Kit, 2° Camber, 24" Spoke with Poly Coated Drive Handrim, 420-530mm Drive Shaft	1	\$2,074.87
1, 2c, 3f, 4c, 5c, 6c, 10-16, 19, 21c	115183	Rogue Quick Release One Arm Drive Retrofit Kit, 4° Camber, 24" Spoke with Poly Coated Drive Handrim, 195-235mm Drive Shaft	1	\$2,128.42
1, 2c, 3f, 4c, 5c, 6d, 10-16, 19, 21c	115184	Rogue Quick Release One Arm Drive Retrofit Kit, 4° Camber, 24" Spoke with Poly Coated Drive Handrim, 220-280mm Drive Shaft	1	\$2,074.87
1, 2c, 3f, 4c, 5c, 6e, 10-16, 19, 21c	115185	Rogue Quick Release One Arm Drive Retrofit Kit, 4° Camber, 24" Spoke with Poly Coated Drive Handrim, 270-330mm Drive Shaft	1	\$2,074.87
1, 2c, 3f, 4c, 5c, 6f, 10-16, 19, 21c	115186	Rogue Quick Release One Arm Drive Retrofit Kit, 4° Camber, 24" Spoke with Poly Coated Drive Handrim, 295-370mm Drive Shaft	1	\$2,074.87
1, 2c, 3f, 4c, 5c, 6g, 10-16, 19, 21c	115187	Rogue Quick Release One Arm Drive Retrofit Kit, 4° Camber, 24" Spoke with Poly Coated Drive Handrim, 350-460mm Drive Shaft	1	\$2,074.87
1, 21a	111508	Quick Release One Arm Drive, 20" Spoke Wheel with Axle (Driven Side)	1	\$428.40
1, 21b	111511	Quick Release One Arm Drive, 22" Spoke Wheel with Axle (Driven Side)	1	\$428.40
1, 21c	111512	Quick Release One Arm Drive, 24" Spoke Wheel with Axle (Driven Side)	1	\$428.40
1, 3a, 4a, 13	112899	Quick Release One Arm Drive Drive, 20" Spoke Wheel with Axle and Aluminum Drive Handrim	1	\$420.00
1, 3b, 4b, 13	112900	Quick Release One Arm Drive Drive, 22" Spoke Wheel with Axle and Aluminum Drive Handrim	1	\$420.00
1, 3c, 4c, 13	112901	Quick Release One Arm Drive Drive, 24" Spoke Wheel with Axle and Aluminum Drive Handrim	1	\$420.00
1, 3d, 4a, 13	115286	Quick Release One Arm Drive Drive, 20" Spoke Wheel with Axle and Poly Coated Drive Handrim	1	\$540.75
1, 3e, 4b, 13	115287	Quick Release One Arm Drive Drive, 22" Spoke Wheel with Axle and Poly Coated Drive Handrim	1	\$540.75
1, 3f, 4c, 13	115288	Quick Release One Arm Drive Drive, 24" Spoke Wheel with Axle and Poly Coated Drive Handrim	1	\$540.75
10, 11, 12	502168	Handrim Hardware Kit, 6 Rivet Nut, EACH	1	\$38.61
2a	200536	Handrim Aluminum Anodized 6 Rivet Nut 20" <i>Does not include mounting hardware</i>	1	\$84.95
2b	100560	Handrim Aluminum Anodized 6 Rivet Nut 22" <i>Does not include mounting hardware</i>	1	\$77.22
2c	200349	Handrim Hard Anodized 6 Rivet Nut 24" <i>Does not include mounting hardware</i>	1	\$82.74
3a	111830	Quick Release One Arm Drive, Aluminum Drive Side Handrim for 20" Wheel <i>Does not include mounting hardware</i>	1	\$262.50
3b	111831	Quick Release One Arm Drive, Aluminum Drive Side Handrim for 22" Wheel	1	\$262.50

Item Number	Part Number	Description	Quantity	Retail
		<i>Does not include mounting hardware</i>		
3c	111520	Quick Release One Arm Drive, Aluminum Drive Side Handrim for 24" Wheel <i>Does not include mounting hardware</i>	1	\$262.50
3d	112433	Quick Release One Arm Drive, Poly Coated Drive Side Handrim for 20" Wheel <i>Does not include mounting hardware</i>	1	\$383.25
3e	112434	Quick Release One Arm Drive, Poly Coated Drive Side Handrim for 22" Wheel <i>Does not include mounting hardware</i>	1	\$383.25
3f	112435	Quick Release One Arm Drive, Poly Coated Drive Side Handrim for 24" Wheel <i>Does not include mounting hardware</i>	1	\$383.25
5a	107031	One Arm Drive Blade/Quick Release Camber Plug w/Bearings - 0° Camber	2	\$81.52
5a, 19	108074	One Arm Drive Rogue/Clik Axle Mount 0 Degree Camber PAIR	1	\$500.20
5b, 19	003209	One Arm Drive Rogue/Clik Axle Mount 2 Degree Camber PAIR	1	\$612.07
5c, 19	003210	One Arm Drive Rogue/Clik Axle Mount 4 Degree Camber PAIR	1	\$612.07
6a	111858	One Arm Drive - Quick Release Camber Drive Shaft 170-195mm	1	\$428.40
6b	111627	One Arm Drive - Quick Release Camber Drive Shaft 180-210mm	1	\$428.40
6c	111628	One Arm Drive - Quick Release Camber Drive Shaft 195-235mm	1	\$428.40
6d	111498	One Arm Drive - Quick Release Camber Drive Shaft 220-280mm	1	\$374.85
6e	111499	One Arm Drive - Quick Release Camber Drive Shaft 270-330mm	1	\$374.85
6f	111500	One Arm Drive - Quick Release Camber Drive Shaft 295-370mm	1	\$374.85
6g	111501	One Arm Drive - Quick Release Camber Drive Shaft 350-460mm	1	\$374.85
6h	111502	One Arm Drive - Quick Release Camber Drive Shaft 420-530mm	1	\$374.85
7	000920	Camber Mount Cap Rigid	2	\$2.63
8a	000924	Camber Mount Tower Medium Black Anodized Rigid	1	\$28.68
8b	000924_ _ _	Color Anodized Camber Mount Tower Medium Rigid	2	\$43.87
8c	000925	Camber Mount Tower Long Black Anodized Rigid	2	\$29.86
8d	000925_ _ _	Color Anodized Camber Mount Tower Long Rigid	2	\$45.07
8e	000926	Camber Mount Tower Extra Long Black Anodized Rigid	2	\$30.46
8f	000926_ _ _	Color Anodized Camber Mount Tower Extra Long Rigid	2	\$45.65
9a, 15, 20	503289	Camber Tower Clamp Black Anodized w/ Hardware Assembly, One Side RG/LW	1	\$67.27

Item Number	Part Number	Description	Quantity	Retail
		<i>If negative CG, see Rogue and Little Wave Camber Mount page</i>		
9b, 15, 20	503289_ _ _	Color Anodized Camber Tower Clamp w/ Hardware Assembly, One Side RG/LW <i>If negative CG, see Rogue and Little Wave Camber Mount page</i>	1	\$90.18
10	100654	M5 x 40 DIN7985 PH Pan HD M/S ZC	6	\$1.66
11	100653	Handrim Spacer Spoke	6	\$1.10
12	100698	Handrim Tab	6	\$4.17
13	103522	M5 x 0.8 x 12 FHCS CLS 10.9 Nyl Blk Zn DIN7991	3	\$1.10
14	101734	M5 x 35 SHCS BLK ZC	2	\$1.10
15	100657	M5 Nylock Nut Blk Zn	4	\$0.56
16	101717	M5 x 25 SHCS BLK ZC	2	\$0.56
17a	111503	One Arm Drive - Quick Release Zero Camber Drive Shaft 177-255mm	1	\$374.85
17b	111504	One Arm Drive - Quick Release Zero Camber Drive Shaft 225-295mm	1	\$374.85
17c	111505	One Arm Drive - Quick Release Zero Camber Drive Shaft 260-370mm	1	\$374.85
17d	111506	One Arm Drive - Quick Release Zero Camber Drive Shaft 330-440mm	1	\$374.85
17e	111507	One Arm Drive - Quick Release Zero Camber Drive Shaft 421-491mm	1	\$374.85
18a	111513	Replacement Spoke, Quick Release One Arm Drive, 20"	1	\$4.69
18b	111514	Replacement Spoke, Quick Release One Arm Drive, 22"	1	\$4.69
18c	111515	Replacement Spoke, Quick Release One Arm Drive, 24"	1	\$4.69
20	101186	M5 X 45 CLS12.9 DIN912 SHCS P/THD BLZ <i>Used with positive CG. If negative CG, see Rogue and Little Wave Camber Mount page</i>	4	\$3.31

DRIVE SHAFT LENGTH BY CONFIGURATION				
ROGUE SEAT WIDTH	WHEEL SPACING	CAMBER	DESCRIPTION	PART NUMBER
SEAT WIDTH 11"	1.75	0	QUICK RELEASE OAD ZERO CAMBER DRIVE SHAFT 177-255MM	~111503
	.75, 1	2	QUICK RELEASE OAD CAMBER DRIVE SHAFT 170-195MM	#111858
	1.25	2	QUICK RELEASE OAD CAMBER DRIVE SHAFT 180-210MM	#111627
	1.5	2	QUICK RELEASE OAD CAMBER DRIVE SHAFT 195-235MM	#111628
	1.75	2	QUICK RELEASE OAD CAMBER DRIVE SHAFT 195-235MM	~111628
	1	4	QUICK RELEASE OAD CAMBER DRIVE SHAFT 195-235MM	#111628
	1.25	4	QUICK RELEASE OAD CAMBER DRIVE SHAFT 220-280MM	~111498
SEAT WIDTH 12"	1.5	0	QUICK RELEASE OAD ZERO CAMBER DRIVE SHAFT 177-255MM	111503
	1.75	0	QUICK RELEASE OAD ZERO CAMBER DRIVE SHAFT 177-255MM	~111503
	.75, 1	2	QUICK RELEASE OAD CAMBER DRIVE SHAFT 180-210MM	#111627
	1.25, 1.5	2	QUICK RELEASE OAD CAMBER DRIVE SHAFT 195-235MM	111628
	1.75	2	QUICK RELEASE OAD CAMBER DRIVE SHAFT 220-280MM	~111498
	0.75	4	QUICK RELEASE OAD CAMBER DRIVE SHAFT 195-235MM	111628
	1	4	QUICK RELEASE OAD CAMBER DRIVE SHAFT 220-280MM	~111498
SEAT WIDTH 13"	1.25	4	QUICK RELEASE OAD CAMBER DRIVE SHAFT 220-280MM	~111498
	1, 1.25, 1.5	0	QUICK RELEASE OAD ZERO CAMBER DRIVE SHAFT 177-255MM	111503
	1.75	0	QUICK RELEASE OAD ZERO CAMBER DRIVE SHAFT 225-295MM	~111504
	.75, 1	2	QUICK RELEASE OAD CAMBER DRIVE SHAFT 195-235MM	111628
	1.25, 1.5	2	QUICK RELEASE OAD CAMBER DRIVE SHAFT 220-280MM	111498
	1.75	2	QUICK RELEASE OAD CAMBER DRIVE SHAFT 220-280MM	~111498
	0.75	4	QUICK RELEASE OAD CAMBER DRIVE SHAFT 220-280MM	111498
SEAT WIDTH 14"	1	4	QUICK RELEASE OAD CAMBER DRIVE SHAFT 220-280MM	~111498
	1.25	4	QUICK RELEASE OAD CAMBER DRIVE SHAFT 270-330MM	~111499
	1, 1.25	0	QUICK RELEASE OAD ZERO CAMBER DRIVE SHAFT 177-255MM	111503
	1.5	0	QUICK RELEASE OAD ZERO CAMBER DRIVE SHAFT 225-295MM	111504
	1.75	0	QUICK RELEASE OAD ZERO CAMBER DRIVE SHAFT 225-295MM	~111504
	.75, 1, 1.25	2	QUICK RELEASE OAD CAMBER DRIVE SHAFT 220-280MM	111498
	1.5	2	QUICK RELEASE OAD CAMBER DRIVE SHAFT 270-330MM	#111499
SEAT WIDTH 15"	1.75	2	QUICK RELEASE OAD CAMBER DRIVE SHAFT 270-330MM	~111499
	0.75	4	QUICK RELEASE OAD CAMBER DRIVE SHAFT 270-330MM	#111499
	1	4	QUICK RELEASE OAD CAMBER DRIVE SHAFT 270-330MM	~111499
	1.25	4	QUICK RELEASE OAD CAMBER DRIVE SHAFT 270-330MM	~111499
	1, 1.25, 1.5	0	QUICK RELEASE OAD ZERO CAMBER DRIVE SHAFT 225-295MM	111504
	1.75	0	QUICK RELEASE OAD ZERO CAMBER DRIVE SHAFT 260-370MM	~111505
	0.75	2	QUICK RELEASE OAD CAMBER DRIVE SHAFT 220-280MM	111498
SEAT WIDTH 16"	1	2	QUICK RELEASE OAD CAMBER DRIVE SHAFT 270-330MM	#111499
	1.25, 1.5	2	QUICK RELEASE OAD CAMBER DRIVE SHAFT 270-330MM	111499
	1.75	2	QUICK RELEASE OAD CAMBER DRIVE SHAFT 295-370MM	~111500
	0.75	4	QUICK RELEASE OAD CAMBER DRIVE SHAFT 270-330MM	111499
	1	4	QUICK RELEASE OAD CAMBER DRIVE SHAFT 295-370MM	~111500
	1.25	4	QUICK RELEASE OAD CAMBER DRIVE SHAFT 295-370MM	~111500
	1.25	4	QUICK RELEASE OAD CAMBER DRIVE SHAFT 295-370MM	~111500

Rogue No-Go Configurations			
Wheel Size	Camber	Wheel Spacing	Rear Seat Height
24	0	1	14.5
24	0	1	15
24	0	1	15.5
22	0	1	14.5
22	0	1	15
22	0	1	15.5
20	0	1	12.5
20	0	1	13

Seat width less than 16" + any rear wheel
camber + any 5th wheel = N/A with QR OAD

#For this configuration, one wheel must be removed before the driveshaft can be installed. The second wheel can be installed

~For this configuration, tower assemblies are to be mounted outboard of the frame.

NOTE: Tower assemblies must be mounted outboard of the frame when offset frames are used.

NOTE: 1.25" minimum wheel spacing is required when side guards are used.

DRIVE SHAFT LENGTH BY CONFIGURATION				
ROGUE SEAT WIDTH	WHEEL SPACING	CAMBER	DESCRIPTION	PART NUMBER
SEAT WIDTH 16"	1	0	QUICK RELEASE OAD ZERO CAMBER DRIVE SHAFT 225-295MM	111504
	1.25, 1.5	0	QUICK RELEASE OAD ZERO CAMBER DRIVE SHAFT 260-370MM	111505
	1.75	0	QUICK RELEASE OAD ZERO CAMBER DRIVE SHAFT 260-370MM	~111505
	.75, 1	2	QUICK RELEASE OAD CAMBER DRIVE SHAFT 270-330MM	111499
	1.25, 1.5	2	QUICK RELEASE OAD CAMBER DRIVE SHAFT 295-370MM	111500
	1.75	2	QUICK RELEASE OAD CAMBER DRIVE SHAFT 295-370MM	~111500
	0.75	4	QUICK RELEASE OAD CAMBER DRIVE SHAFT 295-370MM	111500
	1	4	QUICK RELEASE OAD CAMBER DRIVE SHAFT 295-370MM	~111500
	1.25	4	QUICK RELEASE OAD CAMBER DRIVE SHAFT 295-370MM	~111500
SEAT WIDTH 17"	1, 1.25, 1.5	0	QUICK RELEASE OAD ZERO CAMBER DRIVE SHAFT 260-370MM	111505
	1.75	0	QUICK RELEASE OAD ZERO CAMBER DRIVE SHAFT 330-440MM	~111506
	.75, 1, 1.25, 1.5	2	QUICK RELEASE OAD CAMBER DRIVE SHAFT 295-370MM	111500
	1.75	2	QUICK RELEASE OAD CAMBER DRIVE SHAFT 350-460MM	~111501
	0.75	4	QUICK RELEASE OAD CAMBER DRIVE SHAFT 295-370MM	111500
	1	4	QUICK RELEASE OAD CAMBER DRIVE SHAFT 350-460MM	~111501
SEAT WIDTH 18"	1, 1.25	0	QUICK RELEASE OAD ZERO CAMBER DRIVE SHAFT 260-370MM	111505
	1.5	0	QUICK RELEASE OAD ZERO CAMBER DRIVE SHAFT 330-440MM	111506
	1.75	0	QUICK RELEASE OAD ZERO CAMBER DRIVE SHAFT 330-440MM	~111506
	.75, 1	2	QUICK RELEASE OAD CAMBER DRIVE SHAFT 295-370MM	111500
	1.25, 1.5	2	QUICK RELEASE OAD CAMBER DRIVE SHAFT 350-460MM	111501
	1.75	2	QUICK RELEASE OAD CAMBER DRIVE SHAFT 350-460MM	~111501
	0.75	4	QUICK RELEASE OAD CAMBER DRIVE SHAFT 295-370MM	111500
	1	4	QUICK RELEASE OAD CAMBER DRIVE SHAFT 350-460MM	~111501
SEAT WIDTH 19"	1, 1.25, 1.5	0	QUICK RELEASE OAD ZERO CAMBER DRIVE SHAFT 330-440MM	111506
	1.75	0	QUICK RELEASE OAD ZERO CAMBER DRIVE SHAFT 330-440MM	~111506
	0.75	2	QUICK RELEASE OAD CAMBER DRIVE SHAFT 220-280MM	111498
	1	2	QUICK RELEASE OAD CAMBER DRIVE SHAFT 270-330MM	111499
	1.25	2	QUICK RELEASE OAD CAMBER DRIVE SHAFT 295-370MM	111500
	1.5	2	QUICK RELEASE OAD CAMBER DRIVE SHAFT 350-460MM	111501
	1.75	2	QUICK RELEASE OAD CAMBER DRIVE SHAFT 350-460MM	~111501
	0.75	4	QUICK RELEASE OAD CAMBER DRIVE SHAFT 350-460MM	111501
	1	4	QUICK RELEASE OAD CAMBER DRIVE SHAFT 350-460MM	~111501
SEAT WIDTH 20"	1, 1.25, 1.5	0	QUICK RELEASE OAD ZERO CAMBER DRIVE SHAFT 330-440MM	111506
	1.75	0	QUICK RELEASE OAD ZERO CAMBER DRIVE SHAFT 421-491MM	~111507
	0.75, 1, 1.25, 1.5	2	QUICK RELEASE OAD CAMBER DRIVE SHAFT 350-460MM	111501
	1.75	2	QUICK RELEASE OAD CAMBER DRIVE SHAFT 420-530MM	~111502
	0.75	4	QUICK RELEASE OAD CAMBER DRIVE SHAFT 350-460MM	111501
	1	4	QUICK RELEASE OAD CAMBER DRIVE SHAFT 420-530MM	~111502
	1.25	4	QUICK RELEASE OAD CAMBER DRIVE SHAFT 420-530MM	~111502

#For this configuration, one wheel must be removed before the driveshaft can be installed. The second wheel can be installed once

~For this configuration, tower assemblies are to be mounted outboard of the frame.

NOTE: Tower assemblies must be mounted outboard of the frame when offset frames are used.

NOTE: 1.25" minimum wheel spacing is required when side guards are used.

DRIVE SHAFT CONFIGURATIONS FOR ROGUE WITH T-ARMS				
ROGUE SEAT WIDTH	WHEEL SPACING	CAMBER	DESCRIPTION	PART NUMBER
SEAT WIDTH 11"	1.75	0	QUICK RELEASE OAD ZERO CAMBER DRIVE SHAFT 177-255MM	111503
	1.75	2	QUICK RELEASE OAD CAMBER DRIVE SHAFT 195-235MM	111628
SEAT WIDTH 12"	1.75	0	QUICK RELEASE OAD ZERO CAMBER DRIVE SHAFT 177-255MM	111503
	1.75	2	QUICK RELEASE OAD CAMBER DRIVE SHAFT 220-280MM	111498
SEAT WIDTH 13"	1.75	0	QUICK RELEASE OAD ZERO CAMBER DRIVE SHAFT 225-295MM	111504
	1.75	2	QUICK RELEASE OAD CAMBER DRIVE SHAFT 220-280MM	111498
SEAT WIDTH 14"	1.75	0	QUICK RELEASE OAD ZERO CAMBER DRIVE SHAFT 225-295MM	111504
	1.75	2	QUICK RELEASE OAD CAMBER DRIVE SHAFT 270-330MM	111499
SEAT WIDTH 15"	1.75	0	QUICK RELEASE OAD ZERO CAMBER DRIVE SHAFT 260-370MM	111505
	1.75	2	QUICK RELEASE OAD CAMBER DRIVE SHAFT 295-370MM	111500
SEAT WIDTH 16"	1.75	0	QUICK RELEASE OAD ZERO CAMBER DRIVE SHAFT 260-370MM	111505
	1.75	2	QUICK RELEASE OAD CAMBER DRIVE SHAFT 295-370MM	111500
SEAT WIDTH 17"	1.75	0	QUICK RELEASE OAD ZERO CAMBER DRIVE SHAFT 330-440MM	111506
	1.75	2	QUICK RELEASE OAD CAMBER DRIVE SHAFT 350-460MM	111501
SEAT WIDTH 18"	1.75	0	QUICK RELEASE OAD ZERO CAMBER DRIVE SHAFT 330-440MM	111506
	1.75	2	QUICK RELEASE OAD CAMBER DRIVE SHAFT 350-460MM	111501
SEAT WIDTH 19"	1.75	0	QUICK RELEASE OAD ZERO CAMBER DRIVE SHAFT 330-440MM	111506
	1.75	2	QUICK RELEASE OAD CAMBER DRIVE SHAFT 350-460MM	111501
SEAT WIDTH 20"	1.75	0	QUICK RELEASE OAD ZERO CAMBER DRIVE SHAFT 421-491MM	111507
	1.75	2	QUICK RELEASE OAD CAMBER DRIVE SHAFT 420-530MM	111502

NOTE: TOWER ASSEMBLIES ARE TO BE MOUNTED OUTBOARD OF THE FRAME WHEN T-ARMS ARE USED.

Color Anodizing Samples

