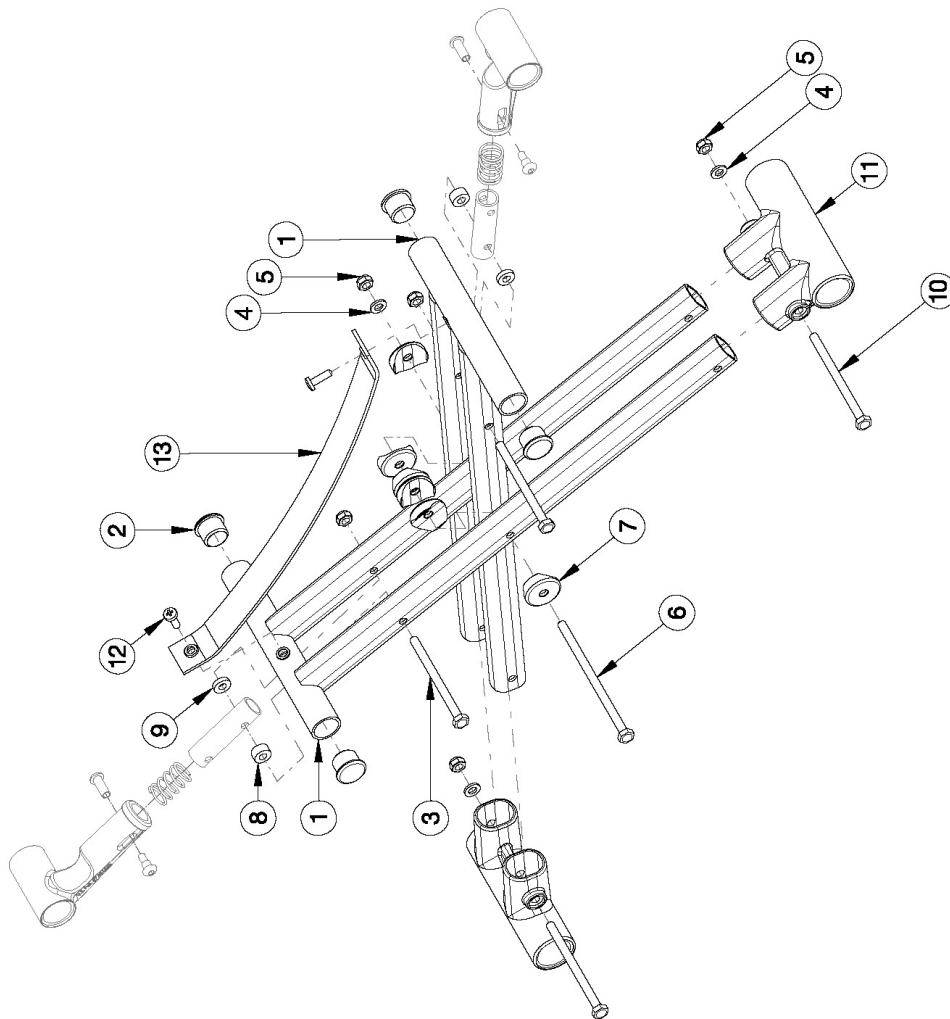


# Catalyst 5 Cross Braces - Open Seating (Seating System) - Growth

---



Pictured oval-style cross braces effective 6/15/16 on 14" - 22" wide chairs starting with serial numbers C5032544, C5037980, C5HD002834, and CVX0091137. When changing from round-style to oval-sty

Item Number	Part Number	Description	Quantity
3-7, 10-11	107296	Lower Frame Pivot and Catalyst Oval-Style Cross Brace Hardware Kit 14" Wide (Pair)	1
3-11	502177	Lower Frame Pivot and Catalyst Oval-Style Cross Brace Hardware Kit (Pair)	1
1a, 2	003353	Seating System Cross Brace 14" Wide CAT	2
1b, 2	003354	Seating System Cross Brace 15" Wide CAT	2
1c, 2	003355	Seating System Cross Brace 16" Wide CAT	2
1d, 2	003356	Seating System Cross Brace 17" Wide CAT	2
1f, 2	003357	Seating System Cross Brace 18" Wide CAT	2
1g, 2	003358	Seating System Cross Brace 19" Wide CAT	2
1h, 2	003359	Seating System Cross Brace 20" Wide CAT	2
1i, 2	003360	Seating System Cross Brace 21" Wide CAT	2
1j, 2	003361	Seating System Cross Brace 22" Wide CAT	2
2	101162	7/8 OD End Plug BLK	2
3	100660	M6 x 80mm CLS8.8 DIN931 HHCS ZC	2
4	100746	M6 Flat Washer Blk Zn	3
5	100658	M6 Nylock Nut Blk Zn	5
6	100678	M6 x 110 CLS8.8 DIN931 HHCS ZC	1
7	002807	Cross Tube Saddle CAT	6
8	100880	1/4" Plastic Spacer <i>Not used on 14" wide chairs</i>	2
9	105019	3/16" Plastic Spacer <i>Not used on 14" wide chairs</i>	2
10	100704	M6 x 90 CLS8.8 DIN931 HHCS ZC	2
3-10	503320	Catalyst Cross Brace Hardware Kit	1
11	002806	Lower Frame Pivot CAT	1
12	100734	M5 x 16 PHMS ZC	2
13a	200233	Seat Strap Open Frame 14" Wide CAT	1
13b	200234	Seat Strap Open Frame 15" Wide CAT	1

Item Number	Part Number	Description	Quantity
13c	200235	Seat Strap Open Frame 16" Wide CAT	1
13d	200236	Seat Strap Open Frame 17" Wide CAT	1
13e	200237	Seat Strap Open Frame 18" Wide CAT	1
13f	200238	Seat Strap Open Frame 19" / 21" Wide CAT	1
13g	200239	Seat Strap Open Frame 20"/22" Wide CAT	1