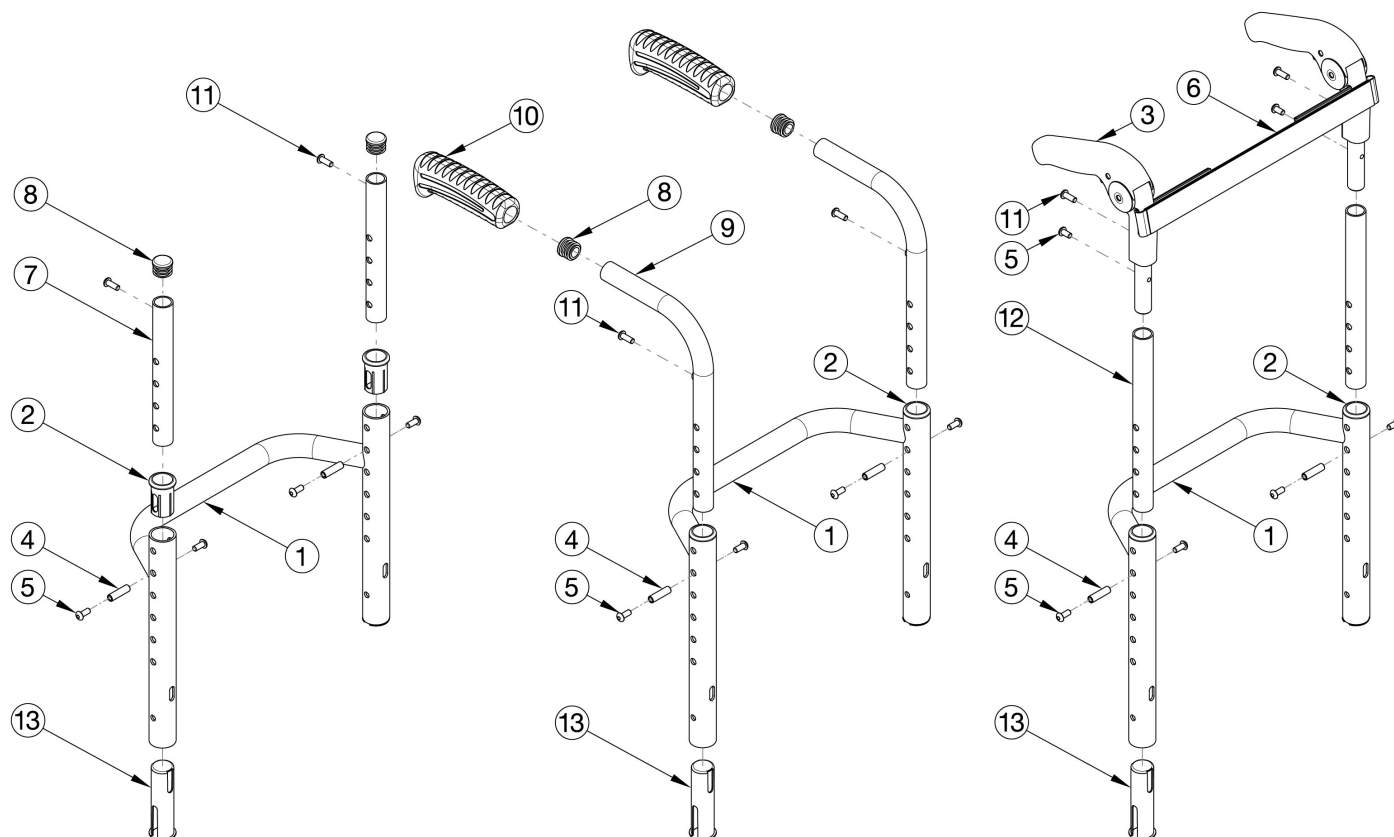


Rigid Height Adjustable Back Post with Non-Adjustable Height Rigidizer Bar



Utilize this page when retrofitting to the Rigid Locking Fold Down Back on a Rogue10, Rogue ALX or Ethos. If chair shipped after 7/3/2025 and Rigidizer Mounted Stroller Handles are present, please refer to quote the appropriate Stroller Handle Page for the Rigidizer.

Item Number	Part Number	Description	Quantity
8, 9a, 10a	502602	Standard Push Handle Assembly, Short	2
8, 9b, 10a	117064	Standard Push Handle Assembly, Medium	2
8, 9c, 10a	117065	Standard Push Handle Assembly, Tall	2
8, 9d, 10b	107205	Low Profile Push Handle Assembly, Short	2
8, 9e, 10b	117066	Low Profile Push Handle Assembly, Medium	2
8, 9f, 10b	117067	Low Profile Push Handle Assembly, Tall	2
3, 5, 11, 12a	117068	Fold Down Push Handle Assembly, Height Adjustable, Short <i>Comes with both 11a and 11b</i>	2
3, 5, 11, 12b	117069	Fold Down Push Handle Assembly, Height Adjustable, Medium	2

Item Number	Part Number	Description	Quantity
		<i>Comes with both 11a and 11b</i>	
3, 5, 11, 12c	117070	Fold Down Push Handle Assembly, Height Adjustable, Tall <i>Comes with both 11a and 11b</i>	2
1a, 2, 4 -5, 13	117105	HA Rigid Backrest / Non-HA Rigidizer Bar with Sleeves, 12" Wide <i>Used with all standard, low profile, and omit push handle. Used with medium 14" - 17" and tall fold down push handle.</i>	1
1b, 2, 4 -5, 13	117106	HA Rigid Backrest / Non-HA Rigidizer Bar with Sleeves, 13" Wide <i>Used with all standard, low profile, and omit push handle. Used with medium 14" - 17" and tall fold down push handle.</i>	1
1c, 2, 4 -5, 13	117107	HA Rigid Backrest / Non-HA Rigidizer Bar with Sleeves, 14" Wide <i>Used with all standard, low profile, and omit push handle. Used with medium 14" - 17" and tall fold down push handle.</i>	1
1d, 2, 4 -5, 13	117108	HA Rigid Backrest / Non-HA Rigidizer Bar with Sleeves, 15" Wide <i>Used with all standard, low profile, and omit push handle. Used with medium 14" - 17" and tall fold down push handle.</i>	1
1e, 2, 4 -5, 13	117109	HA Rigid Backrest / Non-HA Rigidizer Bar with Sleeves, 16" Wide <i>Used with all standard, low profile, and omit push handle. Used with medium 14" - 17" and tall fold down push handle.</i>	1
1f, 2, 4 -5, 13	117110	HA Rigid Backrest / Non-HA Rigidizer Bar with Sleeves, 17" Wide <i>Used with all standard, low profile, and omit push handle. Used with medium 14" - 17" and tall fold down push handle.</i>	1
1g, 2, 4 -5, 13	117111	HA Rigid Backrest / Non-HA Rigidizer Bar with Sleeves, 18" Wide <i>Used with all standard, low profile, and omit push handle. Used with medium 14" - 17" and tall fold down push handle.</i>	1
1h, 2, 4 -5, 13	117112	HA Rigid Backrest / Non-HA Rigidizer Bar with Sleeves, 19" Wide <i>Used with all standard, low profile, and omit push handle. Used with medium 14" - 17" and tall fold down push handle.</i>	1
1i, 2, 4 -5, 13	117113	HA Rigid Backrest / Non-HA Rigidizer Bar with Sleeves, 20" Wide <i>Used with all standard, low profile, and omit push handle. Used with medium 14" - 17" and tall fold down push handle.</i>	1
1j, 2, 4 -5, 13	117114	HA Rigid Backrest / Non-HA Rigidizer Bar with Sleeves, FDPH, Short, 12" Wide <i>Used with short fold down push handle</i>	1
1k, 2, 4 -5, 13	117115	HA Rigid Backrest / Non-HA Rigidizer Bar with Sleeves, FDPH, Short, 13" Wide <i>Used with short fold down push handle</i>	1
1l, 2, 4 -5, 13	117116	HA Rigid Backrest / Non-HA Rigidizer Bar with Sleeves, FDPH, Short, 14" Wide <i>Used with short fold down push handle</i>	1
1m, 2, 4 -5, 13	117117	HA Rigid Backrest / Non-HA Rigidizer Bar with Sleeves, FDPH, Short, 15" Wide <i>Used with short fold down push handle</i>	1
1n, 2, 4 -5, 13	117118	HA Rigid Backrest / Non-HA Rigidizer Bar with Sleeves, FDPH, Short, 16" Wide <i>Used with short fold down push handle</i>	1
1o, 2, 4 -5, 13	117119	HA Rigid Backrest / Non-HA Rigidizer Bar with Sleeves, FDPH, Short, 17" Wide	1

Item Number	Part Number	Description	Quantity
		<i>Used with short fold down push handle</i>	
1p, 2, 4 -5, 13	117120	HA Rigid Backrest / Non-HA Rigidizer Bar with Sleeves, FDPH, Short, 18" Wide <i>Used with short fold down push handle</i>	1
1q, 2, 4 -5, 13	117121	HA Rigid Backrest / Non-HA Rigidizer Bar with Sleeves, FDPH, Short, 19" Wide <i>Used with short fold down push handle</i>	1
1r, 2, 4 -5, 13	117122	HA Rigid Backrest / Non-HA Rigidizer Bar with Sleeves, FDPH, Short, 20" Wide <i>Used with short fold down push handle</i>	1
1s, 2, 4 -5, 13	117123	HA Rigid Backrest / Non-HA Rigidizer Bar with Sleeves, FDPH, Medium, 12" Wide <i>Used with 13" medium fold down push handle</i>	1
1t, 2, 4 -5, 13	117124	HA Rigid Backrest / Non-HA Rigidizer Bar with Sleeves, FDPH, Medium, 13" Wide <i>Used with 13" medium fold down push handle</i>	1
1u, 2, 4 -5, 13	117125	HA Rigid Backrest / Non-HA Rigidizer Bar with Sleeves, FDPH, Medium, 14" Wide <i>Used with 13" medium fold down push handle</i>	1
1v, 2, 4 -5, 13	117126	HA Rigid Backrest / Non-HA Rigidizer Bar with Sleeves, FDPH, Medium, 15" Wide <i>Used with 13" medium fold down push handle</i>	1
1w, 2, 4 -5, 13	117127	HA Rigid Backrest / Non-HA Rigidizer Bar with Sleeves, FDPH, Medium, 16" Wide <i>Used with 13" medium fold down push handle</i>	1
1x, 2, 4 -5, 13	117128	HA Rigid Backrest / Non-HA Rigidizer Bar with Sleeves, FDPH, Medium, 17" Wide <i>Used with 13" medium fold down push handle</i>	1
1y, 2, 4 -5, 13	117129	HA Rigid Backrest / Non-HA Rigidizer Bar with Sleeves, FDPH, Medium, 18" Wide <i>Used with 13" medium fold down push handle</i>	1
1z, 2, 4 -5, 13	117130	HA Rigid Backrest / Non-HA Rigidizer Bar with Sleeves, FDPH, Medium, 19" Wide <i>Used with 13" medium fold down push handle</i>	1
1aa, 2, 4 -5, 13	117131	HA Rigid Backrest / Non-HA Rigidizer Bar with Sleeves, FDPH, Medium, 20" Wide <i>Used with 13" medium fold down push handle</i>	1
1a	115344	Rigid Backrest, 8.813", 12" Wide <i>Used with all standard, low profile, and omit push handle. Used with medium 14" - 17" and tall fold down push handle.</i>	1
1b	115345	Rigid Backrest, 8.813", 13" Wide <i>Used with all standard, low profile, and omit push handle. Used with medium 14" - 17" and tall fold down push handle.</i>	1
1c	115346	Rigid Backrest, 8.813", 14" Wide <i>Used with all standard, low profile, and omit push handle. Used with medium 14" - 17" and tall fold down push handle.</i>	1
1d	115347	Rigid Backrest, 8.813", 15" Wide <i>Used with all standard, low profile, and omit push handle. Used with medium 14" - 17" and tall fold down push handle.</i>	1
1e	115348	Rigid Backrest, 8.813", 16" Wide	1

Item Number	Part Number	Description	Quantity
		<i>Used with all standard, low profile, and omit push handle. Used with medium 14" - 17" and tall fold down push handle.</i>	
1f	115349	Rigid Backrest, 8.813", 17" Wide <i>Used with all standard, low profile, and omit push handle. Used with medium 14" - 17" and tall fold down push handle.</i>	1
1g	115350	Rigid Backrest, 8.813", 18" Wide <i>Used with all standard, low profile, and omit push handle. Used with medium 14" - 17" and tall fold down push handle.</i>	1
1h	115351	Rigid Backrest, 8.813", 19" Wide <i>Used with all standard, low profile, and omit push handle. Used with medium 14" - 17" and tall fold down push handle.</i>	1
1i	115352	Rigid Backrest, 8.813", 20" Wide <i>Used with all standard, low profile, and omit push handle. Used with medium 14" - 17" and tall fold down push handle.</i>	1
1j	115357	Rigid Backrest, 7.813", 12" Wide <i>Used with 13" medium fold down push handle</i>	1
1k	115358	Rigid Backrest, 7.813", 13" Wide <i>Used with 13" medium fold down push handle</i>	1
1l	115359	Rigid Backrest, 7.813", 14" Wide <i>Used with 13" medium fold down push handle</i>	1
1m	115360	Rigid Backrest, 7.813", 15" Wide <i>Used with 13" medium fold down push handle</i>	1
1n	115361	Rigid Backrest, 7.813", 16" Wide <i>Used with 13" medium fold down push handle</i>	1
1o	115362	Rigid Backrest, 7.813", 17" Wide <i>Used with 13" medium fold down push handle</i>	1
1p	115363	Rigid Backrest, 7.813", 18" Wide <i>Used with 13" medium fold down push handle</i>	1
1q	115364	Rigid Backrest, 7.813", 19" Wide <i>Used with 13" medium fold down push handle</i>	1
1r	115365	Rigid Backrest, 7.813", 20" Wide <i>Used with 13" medium fold down push handle</i>	1
1s	115370	Rigid Backrest, 6.813", 12" Wide <i>Used with short fold down push handle</i>	1
1t	115371	Rigid Backrest, 6.813", 13" Wide <i>Used with short fold down push handle</i>	1
1u	115372	Rigid Backrest, 6.813", 14" Wide <i>Used with short fold down push handle</i>	1
1v	115373	Rigid Backrest, 6.813", 15" Wide	1

Item Number	Part Number	Description	Quantity
		<i>Used with short fold down push handle</i>	
1w	115374	Rigid Backrest, 6.813", 16" Wide <i>Used with short fold down push handle</i>	1
1x	115375	Rigid Backrest, 6.813", 17" Wide <i>Used with short fold down push handle</i>	1
1y	115376	Rigid Backrest, 6.813", 18" Wide <i>Used with short fold down push handle</i>	1
1z	115377	Rigid Backrest, 6.813", 19" Wide <i>Used with short fold down push handle</i>	1
1aa	115378	Rigid Backrest, 6.813", 20" Wide <i>Used with short fold down push handle</i>	1
2	000034	Sleeve 3/4" x 1 1/2"	2
3	001735	Folding Handle Assembly Rigid <i>This is to replace an existing Fold Down Push Handle. If wanting to retrofit to the Fold Down Push Handle, order one of the following complete assemblies based on the desired back height: 117068, 117069, 117070. Includes 100734 and 101843.</i>	1
4	000073	M5 x 24 Threaded Barrel	2
5	100669	M5 x 10 BTN SHCS BLKZC w/Patch	4
6a	001749	Tension Strap Folding Handle 12-13 Wide	1
6b	001750	Tension Strap Folding Handle 14-15 Wide	1
6c	001751	Tension Strap Folding Handle 16-17 Wide	1
6d	001752	Tension Strap Folding Handle 18-19 Wide	1
6e	001753	Tension Strap Folding Handle 20-22 Wide	1
7a	002422	Backtube Extension, 6.25" <i>Use with short back height range</i>	1
7b	115314	Backtube Extension 9", Rigid <i>Used with medium or tall back height range</i>	1
8	100638	Tube End Plug 3/4"	2
10a	109432	Ergo Push Handle Grip 3/4" Standard with Instruction	1
10b	109430	Ergo Push Handle Grip 3/4" Low Profile with Instruction	1
11a	100734	M5 x 16 PHMS ZC <i>Fold Down Push Handle</i>	2
11b	101843	M5 x 20 SHCS Blk Zn	2

Item Number	Part Number	Description	Quantity
		<i>Used to attach upholstery</i>	
13	115540	Tube Sleeve	2