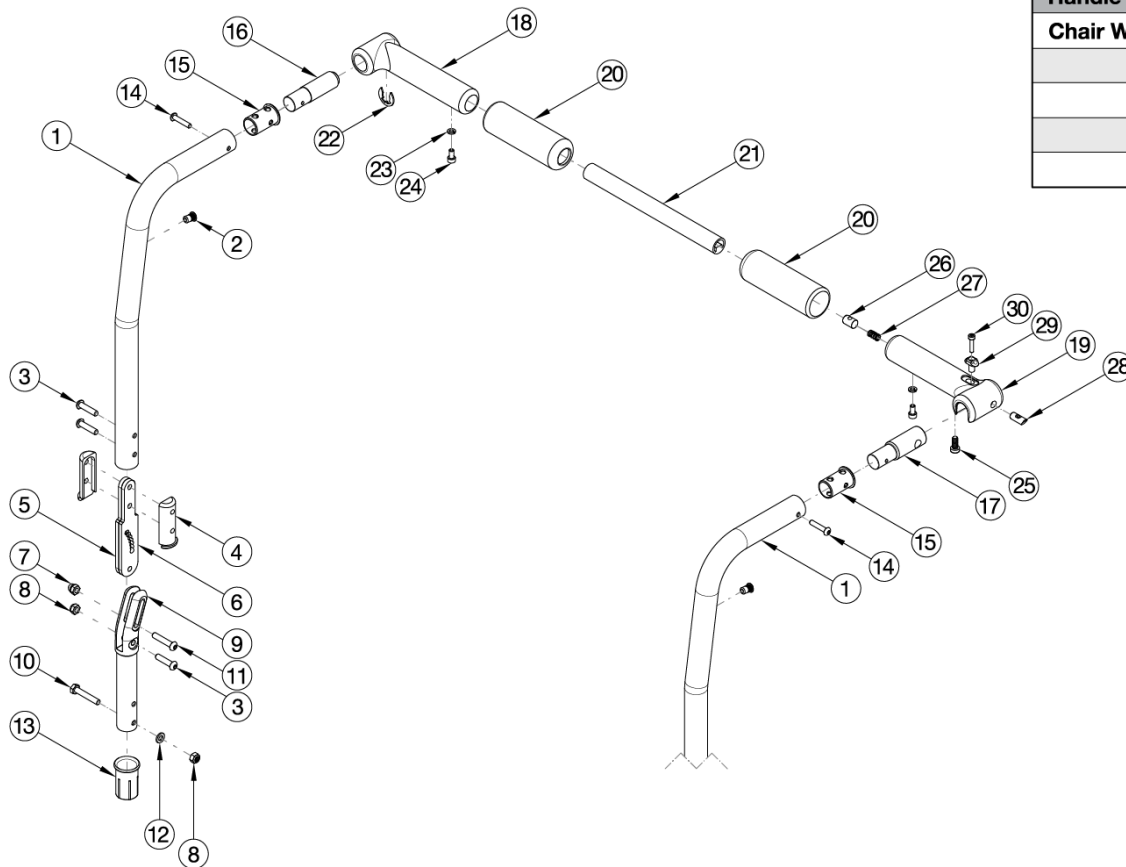


Catalyst E Backrest - Angle Adjustable with Folding Rigidizer Bar



| Handle Crosstube (Item 21) | |
|----------------------------|----------|
| Chair Width Range | Part No. |
| 14" - 16" | 110264 |
| 16" - 18" | 110265 |
| 18" - 20" | 110266 |
| 20" - 22" | 110267 |

| Item Number | Part Number | Description | Quantity |
|-------------|-------------|--|----------|
| 3 | 101593 | M6 x 25 BTN SHCS BLKZC | 1 |
| 4 | 111959 | Angle Adjustable Backrest Angle Plate Sleeve | 1 |
| 5 | 111958 | Angle Adjustable Backrest Plate | 1 |
| 6 | 112984 | Angle Adjustable Backrest Angle Plate Threaded | 1 |
| 7 | 100558 | M6 Nyl Ins Domed Cap L/N Zc | 1 |
| 8 | 100658 | M6 Nylock Nut Blk Zn | 1 |
| 9 | 111960 | Angle Adjustable Backrest Pivot Weldment | 1 |
| 10 | 100860 | M6 X 35 Hhcs P/Thd Zc | 1 |
| 11 | 102625 | M6 X 30 BHCS BLK ZC | 1 |
| 12 | 100746 | M6 Flat Washer Blk Zn | 1 |

| Item Number | Part Number | Description | Quantity |
|-------------|-------------|--|----------|
| 13 | 111965 | Frame Sleeve, Angle Adjustable Backrest | 1 |
| 14 | 102616 | M5 X 25 BHCS BLK ZC | 1 |
| 15 | 001266 | Bushing .832 OD x .720 ID | 1 |
| 16 | 110258 | Adapter, Pivot, Rigidizer Handle | 1 |
| 17 | 110259 | Adapter, Latch, Rigidizer Handle | 1 |
| 18 | 110260 | Pivot, Rigidizer Handle | 1 |
| 19 | 110261 | Latch, Rigidizer Handle | 1 |
| 21 | 110264 | Cross Tube, Rigidizer Handle, 14-16 Wide | 1 |
| 22 | 110291 | E-RING, M13-M18, DIN6799, ZC | 1 |
| 23 | 102614 | M5 Split Lock Washer BLK ZC | 1 |
| 24 | 101766 | M5 X 10 Cls12.9 Din912 Shcs Pln | 1 |
| 25 | 101185 | M6 x 14 CLS8.8 DIN7984 Low SHCS BLKZC | 1 |
| 26 | 102768 | M6 Barrel Nut | 1 |
| 28 | 110263 | Pin, Latch, Rigidizer Handle | 1 |
| 29 | 110262 | Button, Latch, Rigidizer Handle | 1 |
| 30 | 110290 | SHCS, M4 x 0.7 x 18, CLS12.9, BLZ, NYL, DIN912 | 1 |