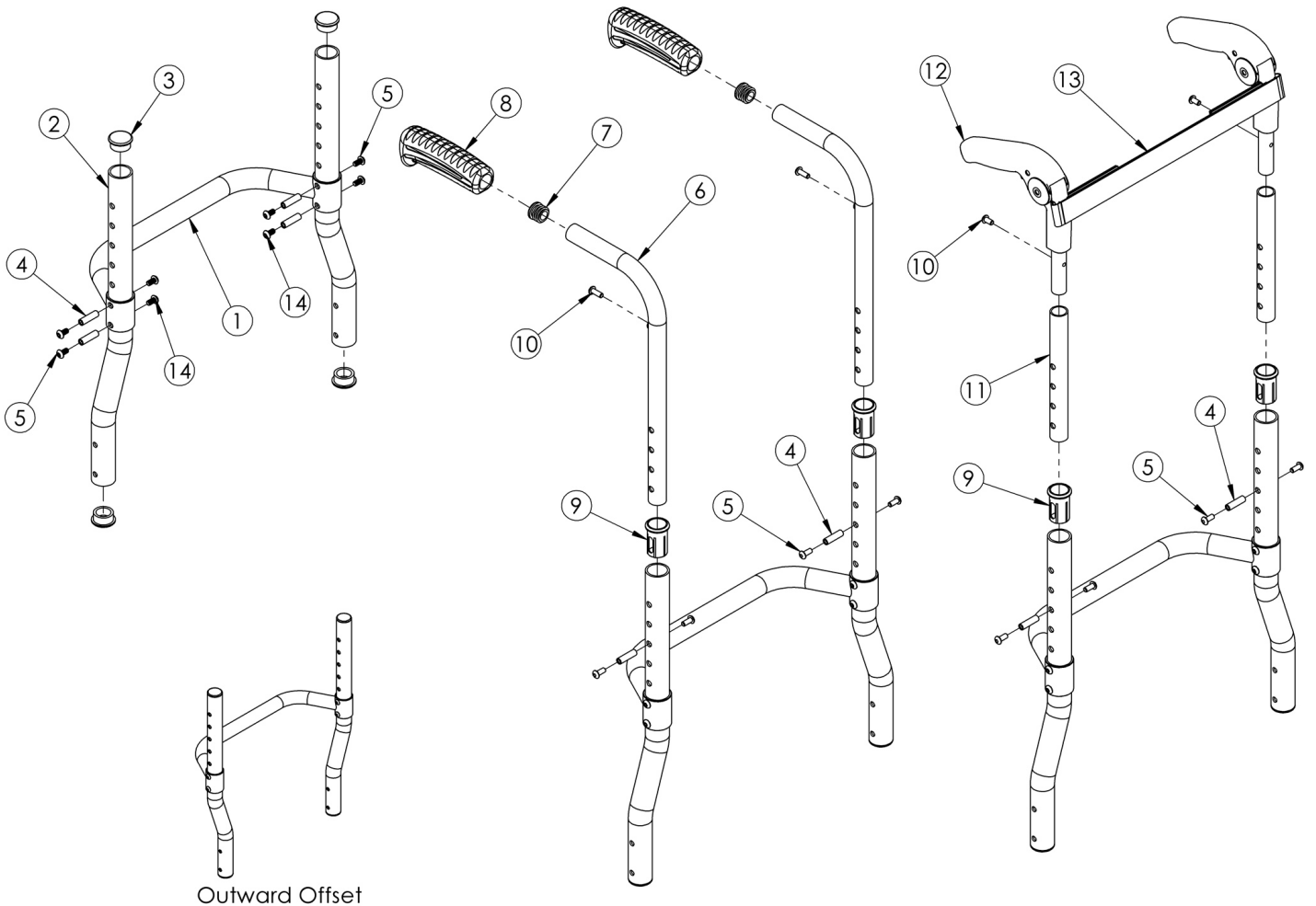


Clik / Rogue XP Fixed Height 2" Offset Back Post



Outward Offset

For item 1, see [Little Wave Clik Adjustable Height Rigidizer Bar](#) page or [Rogue XP Adjustable Height Rigidizer Bar](#) page. <p>If retrofitting to this style of back cane, a new rigidizer bar in new size is required. <p>

If changing from another style backrest and the Drum Brake is present, a new Drum Brake Cable Kit may be required

Item Number	Part Number	Description	Quantity	Retail
6a, 7, 8a	110621	Standard Push Handle Assembly for Offset Back, 13" Back Height <i>Used with 13" Back Height and drum brake is not present</i>	1	\$34.92
6b, 7, 8a	110622	Standard Push Handle Assembly for Offset Back, 14" Back Height <i>Used with 14" Back Height and drum brake is not present</i>	1	\$34.92
6c, 7, 8a	110623	Standard Push Handle Assembly for Offset Back, 15" - 17" Back Height <i>Used with 15" - 17" Back Heights and drum brake is not present</i>	1	\$34.92
6g, 7, 8a	113221	Backtube w/ Push Handle Short with Backcane Extension, Drum Brake, Rigid <i>Used when drum brake is present. To view the backcane extension included in this kit, see Rogue XP / Clik / Little Wave XP Drum Brake page.</i>	1	\$52.29

Item Number	Part Number	Description	Quantity	Retail
6d, 7, 8b	110624	Low Profile Push Handle Assembly for Offset Back, 13" Back Height <i>Used with 13" Back Height</i>	1	\$36.22
6e, 7, 8b	110625	Low Profile Push Handle Assembly for Offset Back, 14" Back Height <i>Used with 14" Back Height</i>	1	\$36.22
6f, 7a, 8b	110626	Low Profile Push Handle Assembly for Offset Back, 15" - 17" Back Height <i>Used with 15" - 17" Back Heights</i>	1	\$36.22
5, 10, 11a, 12	110627	Fixed Height Fold Down Push Handle Assembly, for Offset Back, 15" - 16" Back Height <i>Used with 15" back height</i>	1	\$114.82
5, 10, 11b, 12	110629	Fixed Height Fold Down Push Handle Assembly, for Offset Back, 16" Back Height <i>Used with 16" back height</i>	1	\$114.82
5, 10, 11c, 12	110628	Fixed Height Fold Down Push Handle Assembly, for Offset Back, 17" Back Height <i>Used with 17" back height</i>	1	\$114.82
2a, 3	110609	1" Offset Back Tube 9" with Tube End Plugs <i>Used with 11" back height with omit push handles</i>	1	\$56.05
2b, 3	110610	1" Offset Back Tube 10" with Tube End Plugs <i>Used with 12" back height with omit push handles</i>	1	\$56.05
2c, 3	110611	1" Offset Back Tube 11" with Tube End Plugs <i>Used with 13" back height with omit push handles</i>	1	\$56.05
2d, 3	110612	1" Offset Back Tube 12" with Tube End Plugs <i>Used with 14" back height with omit push handles</i>	1	\$56.05
2e, 3	110613	1" Offset Back Tube 13" with Tube End Plugs <i>Used with 15" back height with omit push handles</i>	1	\$56.05
2f, 3	110614	1" Offset Back Tube 14" with Tube End Plugs <i>Used with 16" back height with omit push handles</i>	1	\$56.05
2g, 3	110615	1" Offset Back Tube 15" with Tube End Plugs <i>Used with 17" back height with omit push handles</i>	1	\$56.05
2a, 3, 9	110616	1" Offset Back Tube 9" with Tube End Plug and Sleeve <i>Used with 13" back height with standard or low profile push handles</i>	1	\$58.49
2b, 3, 9	110617	1" Offset Back Tube 10" with Tube End Plug and Sleeve <i>Used with 14" back height with standard or low profile push handles or 15" - 16" back heights with fold down push handles</i>	1	\$58.49
2c, 3, 9	110618	1" Offset Back Tube 11" with Tube End Plug and Sleeve <i>Used with 15" back height with standard or low profile push handles or 17" back height with fold down push handles</i>	1	\$58.49
2d, 3, 9	110619	1" Offset Back Tube 12" with Tube End Plug and Sleeve <i>Used with 16" back height with standard or low profile push handles</i>	1	\$58.49

Item Number	Part Number	Description	Quantity	Retail
2e, 3, 9	110620	1" Offset Back Tube 13" with Tube End Plug and Sleeve <i>Used with 17" back height with standard or low profile push handles</i>	1	\$58.49
3	100804	Tube End Plug 1"	4	\$1.58
4	000073	M5 x 24 Threaded Barrel	4	\$3.78
5	103524	M5 x 10 BTN SHCS BLK ZN	4	\$0.53
7	100638	Tube End Plug 3/4"	2	\$2.10
8a	109432	Ergo Push Handle Grip 3/4" Standard with Instruction	1	\$7.14
8b	109430	Ergo Push Handle Grip 3/4" Low Profile with Instruction	1	\$7.14
9	000034	Sleeve 3/4" x 1 1/2"	2	\$3.66
10	100734	M5 x 16 PHMS ZC <i>Used to mount back upholstery and/or Fold Down Push Handle</i>	2	\$1.58
14	100669	M5 x 10 BTN SHCS BLKZC w/Patch	4	\$1.58