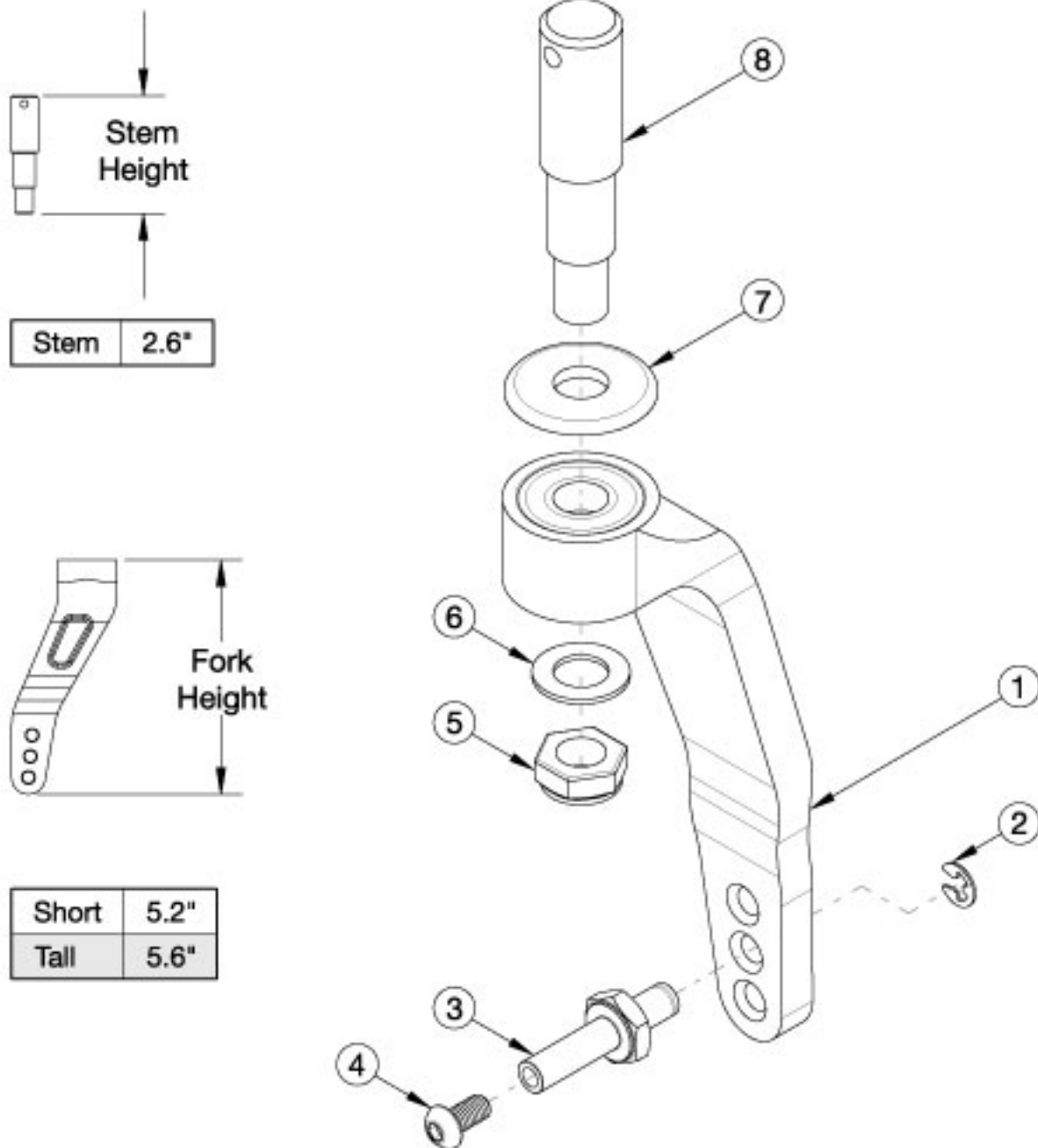


Rogue2 Single Sided Fork



Use a short fork when a 3-5" caster is present. Use a tall fork when a 6" caster is present.

| Item Number | Part Number | Description | Quantity |
|-------------|-------------|---|----------|
| 1a, 2-4, 7a | 501800 | Caster Fork Single Sided Short Right Black Anodized | 1 |
| 1a, 2-4, 7b | 501800_ _ _ | Caster Fork Single Sided Short Right Color Anodized | 1 |
| 1b, 2-4, 7a | 501801 | Caster Fork Single Sided Short Left Black Anodized | 1 |

| Item Number | Part Number | Description | Quantity |
|-------------|-------------|---|----------|
| 1b, 2-4, 7b | 501801_ _ _ | Caster Fork Single Sided Short Left Color Anodized | 1 |
| 1c, 2-4, 7a | 501802 | Caster Fork Single Sided Tall Right Black Anodized | 1 |
| 1c, 2-4, 7b | 501802_ _ _ | Caster Fork Single Sided Tall Right Color Anodized | 1 |
| 1d, 2-4, 7a | 501803 | Caster Fork Single Sided Tall Left Black Anodized | 1 |
| 1d, 2-4, 7b | 501803_ _ _ | Caster Fork Single Sided Tall Left Color Anodized | 1 |
| 5, 6, 8 | 117596 | Single Sided Stem Assembly, Rogue2 | 1 |
| 2-4 | 501799 | Single Sided Axle Assembly | 1 |
| 2 | 102364 | Side-Mount External Retaining Ring (E-Style) Black-Finish Steel | 1 |
| 3 | 001354 | Axle Shaft for Single Sided Fork | 1 |
| 4 | 100667 | M6 x 12 BTN SHCS BLKZC w/Patch | 1 |
| 5 | 101840 | M10 Nylock Nut Blk Zn | 1 |
| 6 | 101859 | M10 Flat Washer Blk Zn | 1 |
| 7a | 001355 | Caster Bearing Cap Black Anodized | 1 |
| 7b | 001355_ _ _ | Color Anodized Caster Bearing Cap | 1 |

Color Anodizing Samples

