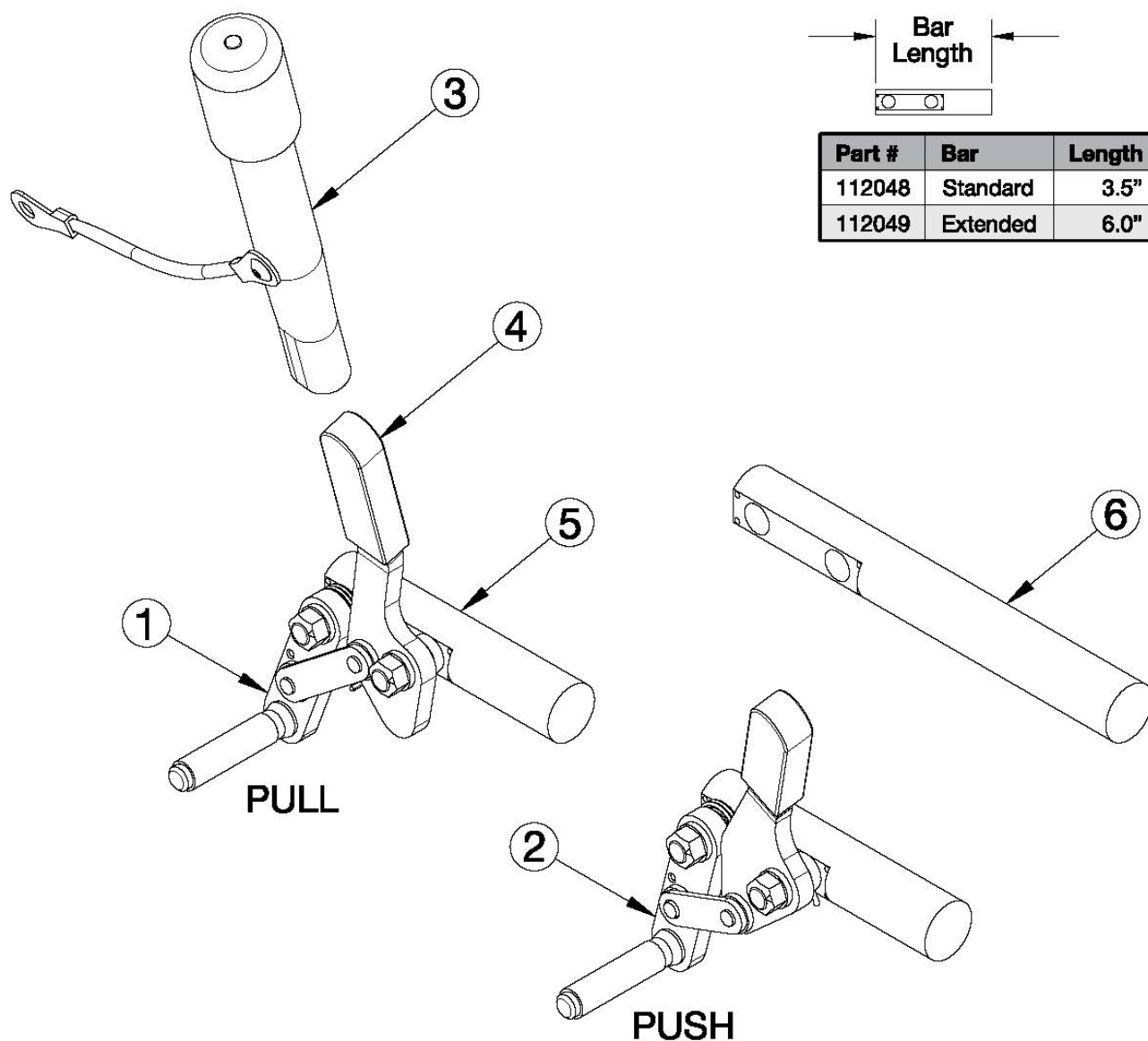


Push and Pull to Lock Wheel Locks



If invoiced prior to 7/2025 pair of wheel lock will be needed Ethos: if adding Wheel Locks to a chair, new Front ISO Towers are required

Item Number	Part Number	Description	Quantity
1a, 4, 5	124098	Thru Post Wheel Lock Pull Right Standard	1
1b, 4, 5	124099	Thru Post Wheel Lock Pull Left Standard	1
1a, 3-5	124100	Thru Post Wheel Lock Pull Right with Extension Handle	1
1b, 3-5	124101	Thru Post Wheel Lock Pull Left with Extension Handle	1
2a, 4, 5	124094	Thru Post Wheel Lock Push Right Standard	1

Item Number	Part Number	Description	Quantity
2b, 4, 5	124095	Thru Post Wheel Lock Push Left Standard	1
2a, 3-5	124096	Thru Post Wheel Lock Push Right with Extension Handle	1
2b, 3-5	124097	Thru Post Wheel Lock Push Left with Extension Handle	1
3	112804	Wheel Lock Extension <i>6" long extension. Use this part number when replacing an extension on a wheel lock that already has one.</i>	1
3	115610	Wheel Lock Extension with Bushing <i>6" long extension. Use this part number when adding an extension to a wheel lock that does not already have an extension.</i>	1
4	111247	Wheel Lock Cover Plastic	1
6	112049	Wheel Lock Mount Bar Extended <i>Used as needed. This wheel lock bar is not compatible with the push or pull to lock wheel locks on a discontinued page.</i>	1