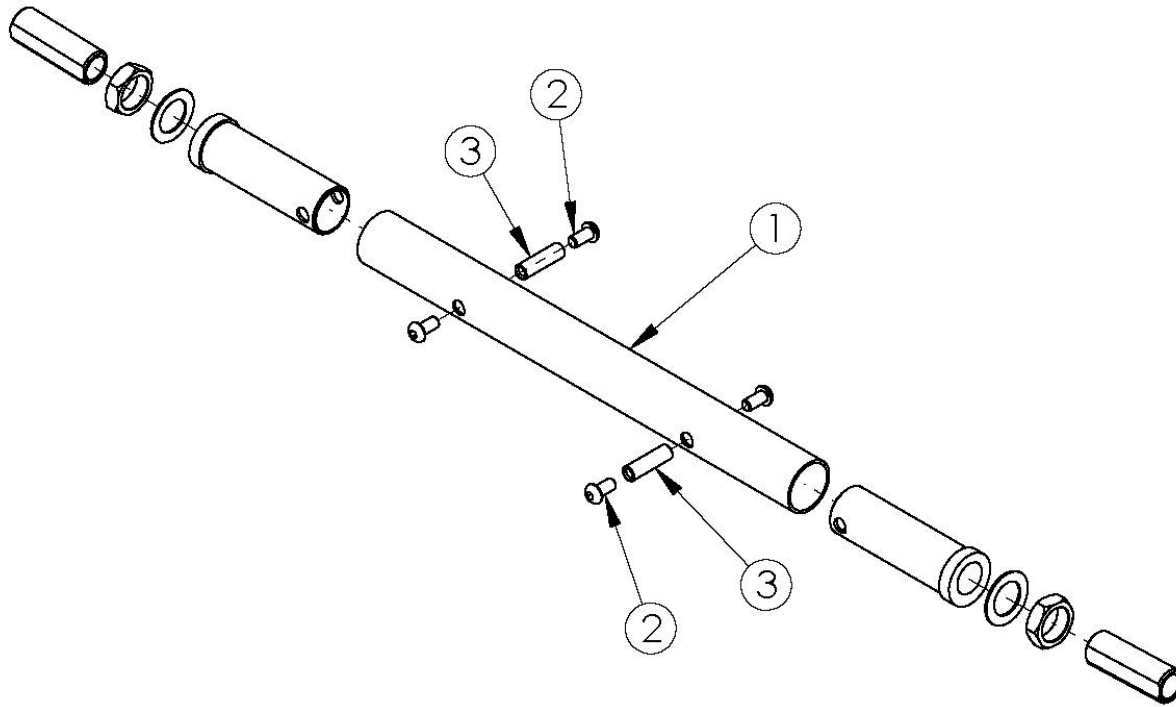


# Little Wave XP Camber Tube - Growth



*Camber Tube based on seat width <p>*

*A new Camber Tube is required when changing the degree of camber by more than 2° <p>*

*If Wheelchair Drive Ready Option is present, replacement parts need to be processed through Alber USA*

Item Number	Part Number	Description	Quantity	Retail
1a	500720	Camber Tube Rigid 10" Kit Black	1	\$173.01
1b	500721	Camber Tube Rigid 11" Kit Black	1	\$173.01
1c	500722	Camber Tube Rigid 12" Kit Black	1	\$173.01
1d	500723	Camber Tube Rigid 13" Kit Black	1	\$173.01
1e	500724	Camber Tube Rigid 14" Kit Black	1	\$173.01
1f	500725	Camber Tube Rigid 15" Kit Black	1	\$173.01
1g	500726	Camber Tube Rigid 16" Kit Black	1	\$173.01
1h	500727	Camber Tube Rigid 17" Kit Black	1	\$173.01
1i	500728	Camber Tube Rigid 18" Kit Black	1	\$173.01

<b>Item Number</b>	<b>Part Number</b>	<b>Description</b>	<b>Quantity</b>	<b>Retail</b>
1j	500729	Camber Tube Rigid 19" Kit Black	1	\$173.01
2	100667	M6 x 12 BTN SHCS BLKZC w/Patch	4	\$1.55
3	000066	M6 x 27 Threaded Barrel	2	\$4.37