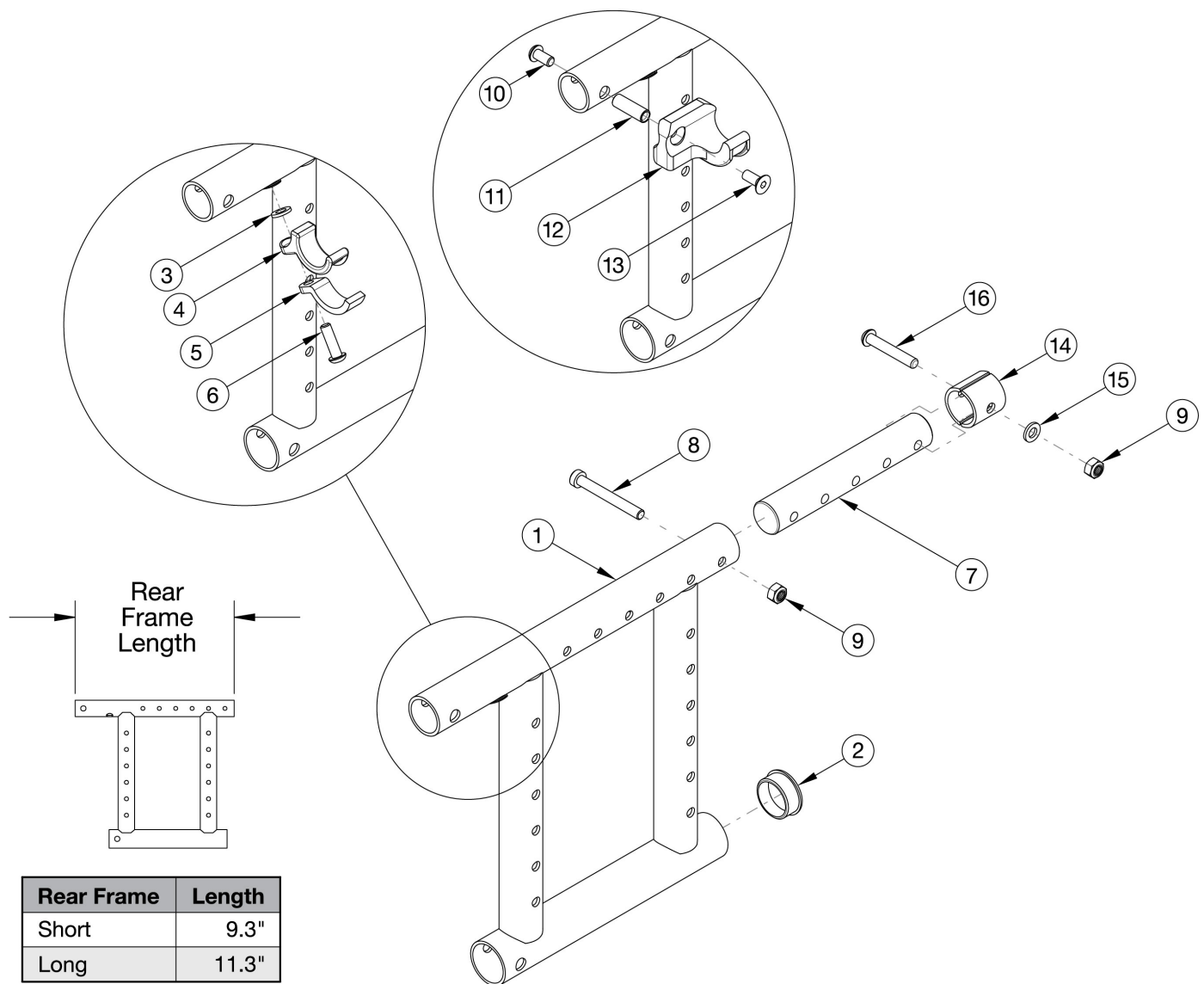


Catalyst 5 Depth Adjustable Rear Frame



Use short frame for 14-17" Seat Depths. Use long frame for 18-20" Seat Depths If changing to a new seat depth, new Height Adjustable T-Arms may be required

Item Number	Part Number	Description	Quantity
3, 4, 5, 6a	501005	Seat Hook and Support Hardware Kit, Standard, Catalyst <i>Used with Standard Weight Capacity. This kit contains quantity of 1 each. Used with Aluminum and Titanium Cross Braces</i>	1
3, 4, 5, 6b	114528	Seat Hook and Support Hardware Kit, Standard, for Heavy Duty Catalyst <i>Used with Heavy Duty / 350 lbs Weight Capacity. This kit contains quantity 1 each</i>	1
10, 11, 12a, 13	111569	Seat Hook and Support Hardware Kit Seating System Right Front Frame / Left Rear Frame Catalyst	1

Item Number	Part Number	Description	Quantity
		<i>This kit contains quantity of 1 each. Used with Open Seating/Seating System Cross Braces</i>	
10, 11, 12b, 13	111570	Seat Hook and Support Hardware Kit, Seating System Left Front Frame / Right Rear Frame Catalyst <i>This kit contains quantity of 1 each. Used with Open Seating/Seating System Cross Braces</i>	1
7, 9, 14, 15, 16	115765	Depth Adjustable Extension with Hardware, Catalyst/Spark	1
1a, 2	101601_ _ _	Frame Assembly, Catalyst Depth Adjustable Rear, Left, Short	1
1c, 2	101600_ _ _	Frame Assembly, Catalyst Depth Adjustable Rear, Right, Short	1
1b, 2	101603_ _ _	Frame Assembly, Catalyst Depth Adjustable Rear, Left, Long	1
1d, 2	101602_ _ _	Frame Assembly, Catalyst Depth Adjustable Rear, Right, Long	1
2	100532	Tube End Plug 1 1/8"	1
3	100831	1/2" Washer OD .040" Thick <i>Used with Aluminum and Titanium Cross Braces</i>	1
4	000003	Seat Hook, Catalyst <i>Used with Aluminum and Titanium Cross Braces</i>	1
5	000004	Seat Hook Support, Catalyst <i>Used with Aluminum and Titanium Cross Braces</i>	1
6a	100668	M6 x 20 CLS10.9 BTN SHCS ZC w/Patch <i>Used with Standard Weight Capacity and Aluminum or Titanium Cross Braces</i>	1
6b	101180	M6 x 20 SHCS BLK ZC <i>Used with Heavy Duty / 350 lbs Weight Capacity and Aluminum or Titanium Cross Braces</i>	1
7	000605	Depth Adjustable Frame Extension Tube, Catalyst/Spark	1
8	101124	M6 x 50 Low SHCS BLK ZC	1
9	100658	M6 Nylock Nut Blk Zn	1
10	100667	M6 x 12 BTN SHCS BLKZC w/Patch <i>Used with Open Seating/Seating System Cross Braces</i>	1
11	000065	M6 x 23.68 Threaded Barrel <i>Used with Open Seating/Seating System Cross Braces</i>	1
12a	000960R	Seat Hook Open Frame Right Front Frame / Left Rear Frame, Catalyst <i>Used with Open Seating/Seating System Cross Braces</i>	1
12b	000960L	Seat Hook Open Frame Left Front Frame / Right Rear Frame, Catalyst <i>Used with Open Seating/Seating System Cross Braces</i>	1
13	101594	M6 x 14 CLS10.9 DIN7991 FSHCS BLKZC w/Patch	1

Item Number	Part Number	Description	Quantity
14	114443	<p>Used with Open Seating/Seating System Cross Braces</p> <p>Tube Spacer, Black, 1" OD x .083" x .80 LG</p> <p><i>Used with Stroller Handle Backpost and Height Adjustable Straight with Push Handle Backpost designs released February 8th, 2021</i></p>	2
15	100746	<p>M6 Flat Washer Blk Zn</p> <p><i>Used with Stroller Handle Backpost and Height Adjustable Straight with Push Handle Backpost designs released February 8th, 2021</i></p>	1
16	101811	<p>M6 x 35 BHCS Blk Zn</p> <p><i>Used with Stroller Handle Backpost and Height Adjustable Straight with Push Handle Backpost designs released February 8th, 2021</i></p>	1

Matte Finish	
Code	Color Name
CGM	Charcoal Gray
EGM	Emerald Green
GGM	Graphite Gray*
IBM	Iridescent Burgundy
INM	Iridescent Navy
AGM	Military Green**
RRM	Retro Red
RBM	Royal Blue
SBM	Shadow Black
SWM	Smooth White

* Discontinued Color

** Formerly called Army Green

Gloss Finish	
Code	Color Name
BLK	Black
BLU	Blue
SKY	Blue Skies
BRO	Bright Orange*
PNK	Bubblegum Pink
BUR	Burgundy*
CBL	Candy Blue
PUR	Candy Purple
RED	Candy Red
COP	Copper
DPR	Deep Purple*
EBL	Electric Blue*
GRN	Forest Green*
FUS	Fuchsia*
GSM	Granny Smith
MTF	Metallic Fuchsia*
MOR	Metallic Orange
ORG	Orange*
SAP	Sapphire*
SIL	Silver
TEA	Teal
YLW	Yellow
FLM	Graphic Image Transfer