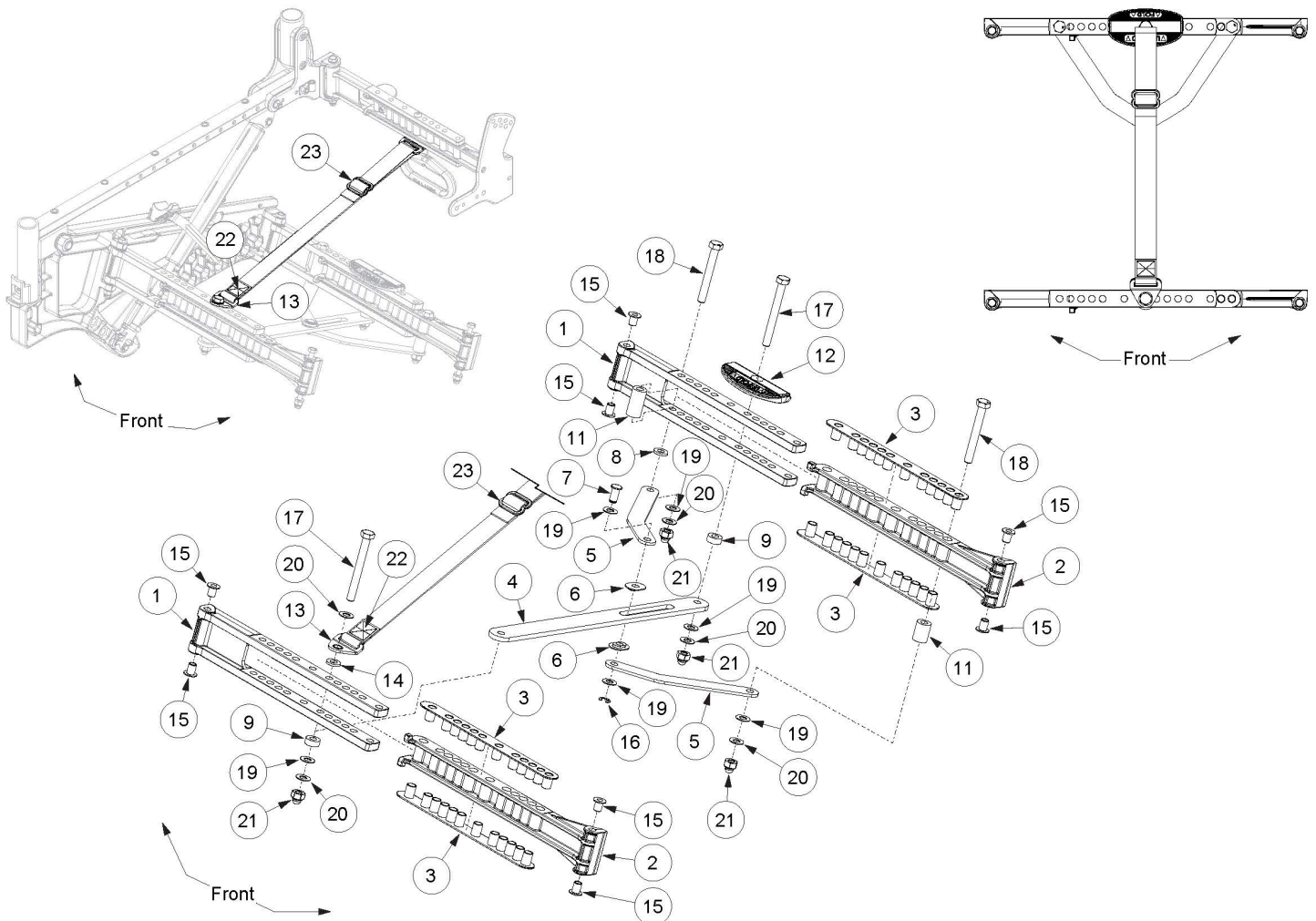


Liberty Folding Base Cross Brace



For Non-Folding Cross Brace hardware for a Liberty Folding Frame, see Liberty Non-Folding Cross Brace page.

Item Number	Part Number	Description	Quantity
1a, 2a, 3-23	110071	Cross Brace Assembly, Base, Small, 14W with Instruction <i>Used on 14 - 15" wide with folding frame</i>	1
1a, 2a, 3-23	110072	Cross Brace Assembly, Base, Small, 16W with Instruction <i>Used on 16 - 18" wide with a small width range and folding frame</i>	1
1b, 2b, 3-23	110073	Cross Brace Assembly, Base, Medium, 16W with Instruction <i>Used on 16 - 17" wide with medium width range and folding frame</i>	1
1b, 2b, 3-23	110074	Cross Brace Assembly, Base, Medium, 18W with Instruction <i>Used on 18 - 20" wide with medium width range and folding frame</i>	1
1c, 2c, 3-23	110075	Cross Brace Assembly, Base, Large, 18W with Instruction	1

Item Number	Part Number	Description	Quantity
		<i>Used on 18 - 19" wide with large width range and folding frame</i>	
1c, 2c, 3-23	110076	Cross Brace Assembly, Base, Large, 20W with Instruction <i>Used on 20 - 22" wide with large width range and folding frame</i>	1
1a, 2a, 3-8, 10, 11, 15, 16, 18-21	110077	Cross Brace Assembly Non-Folding, Base, Small, 14W with Instruction <i>Used on 14 - 15" wide with non-folding frame. Includes non-folding frame hardware.</i>	1
1a, 2a, 3-8, 10, 11, 15, 16, 18-21	110078	Cross Brace Assembly Non-Folding, Base, Small, 16W with Instruction <i>Used on 16 - 18" wide with a small width range and non-folding frame. Includes non-folding frame hardware.</i>	1
1b, 2b, 3-8, 10, 11, 15, 16, 18-21	110079	Cross Brace Assembly Non-Folding, Base, Medium, 16W with Instruction <i>Used on 16 - 17" wide with medium width range and non-folding frame. Includes non-folding frame hardware.</i>	1
1b, 2b, 3-8, 10, 11, 15, 16, 18-21	110080	Cross Brace Assembly Non-Folding, Base, Medium, 18W with Instruction <i>Used on 18 - 20" wide with medium width range and non-folding frame. Includes non-folding frame hardware.</i>	1
1c, 2c, 3-8, 10, 11, 15, 16, 18-21	110081	Cross Brace Assembly Non-Folding, Base, Large, 18W with Instruction <i>Used on 18 - 19" wide with large width range and non-folding frame. Includes non-folding frame hardware.</i>	1
1c, 2c, 3-8, 10, 11, 15, 16, 18-21	110082	Cross Brace Assembly Non-Folding, Base, Large, 20W with Instruction <i>Used on 20 - 22" wide with large width range and non-folding frame. Includes non-folding frame hardware.</i>	1
4-7, 16, 19	506145	Lower Cross Brace Linkage Kit	1
3	003255	Pivot Pad, Frame	4
4	003256	Tie Rod	1
5	003257	Link, Stabilizer	2
6	003258	Slide Insert, Tie Rod	2
7	003259	Clevis Pin, 8mm x .600Lg	1
8	003260	Spacer, .62ODx.316IDx.090L	1
9	003261	Spacer, .62ODx.316IDx.250L <i>Not included with non-folding frame</i>	2
10	003262	Spacer, .62ODx.316IDx.820L	1
11	003263	Spacer, .62ODx.316IDx1.220L	1
12	003434	Foot Pad, Folding	1

Item Number	Part Number	Description	Quantity
		<i>Not included with non-folding frame</i>	
14	003438	Spacer, .430x.323IDx.115 <i>Not included with non-folding frame</i>	1
15	003666	Bearing, Flg, 6mm ID x 12mm Lg	6
16	102335	E-Ring 5/16" SS	1
17	103025	M8 x 75 HHCS, Blk Zn <i>Not included with non-folding frame</i>	2
18	100695	M8 x 65 HHCS ZC	2
19	103037	Washer, Nylon, .315IDx.625ODx.031T <i>Use quantity 4 with non-folding frame</i>	6
20	103140	M8 Thin Washer, BLK Zn <i>Use quantity 2 with non-folding frame</i>	5
21	103204	M8 Dome Locknut, DIN986, BLK Zn <i>Use quantity 2 with non-folding frame</i>	4
13, 22	107150	Folding Strap with Mount, Liberty <i>Not included with non-folding frame</i>	1
23	107151	Folding Strap Slide, 1" <i>Not included with non-folding frame</i>	1
13, 22, 23	111130	Folding Strap with Mount and Strap Slide, Liberty	1