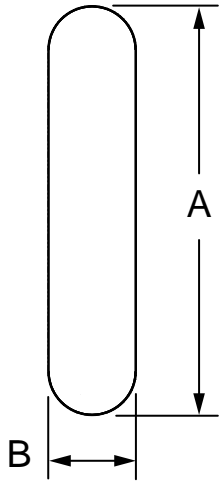


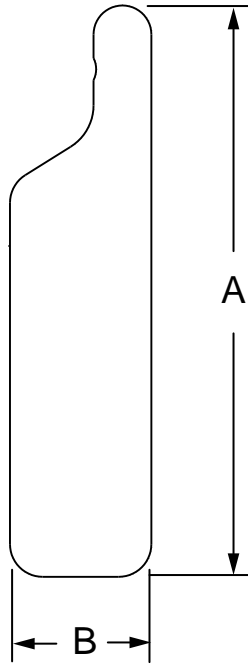
SEDEO PRO ARMREST PAD MEASURING GUIDE

2" Comfort Gel Pad



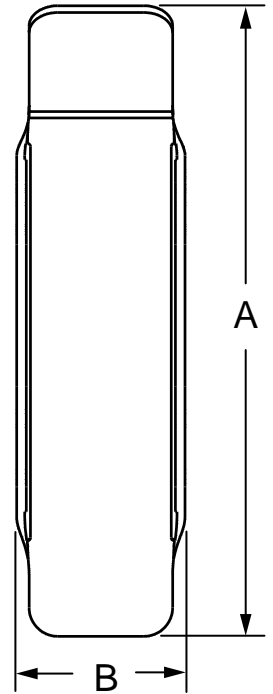
Part Number	"A"	"B"
163344, 163345	16"	3 1/2"

4" Comfort Gel Pad



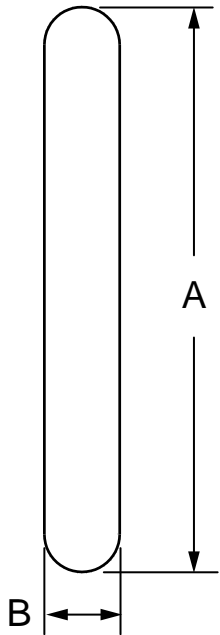
Part Number	"A"	"B"
163346, 163347	17 1/2"	4 1/4"

Gel Trough Pad



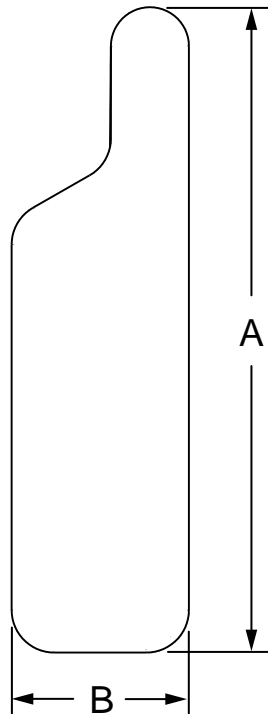
Part Number	"A"	"B"
163348, 163349	18"	4"
163350, 163351	20 1/2"	4"

2" Comfort Pad



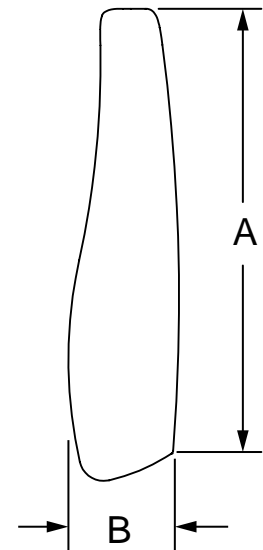
Part Number	"A"	"B"
163352, 163353	14 3/4"	2"

4" Comfort Pad



Part Number	"A"	"B"
163354, 163355	18"	5"

Standard Pad



Part Number	"A"	"B"
163356, 163357	12 1/4"	3"
163358, 163359	15"	3 1/2"
163360, 163361	17 3/4"	5"