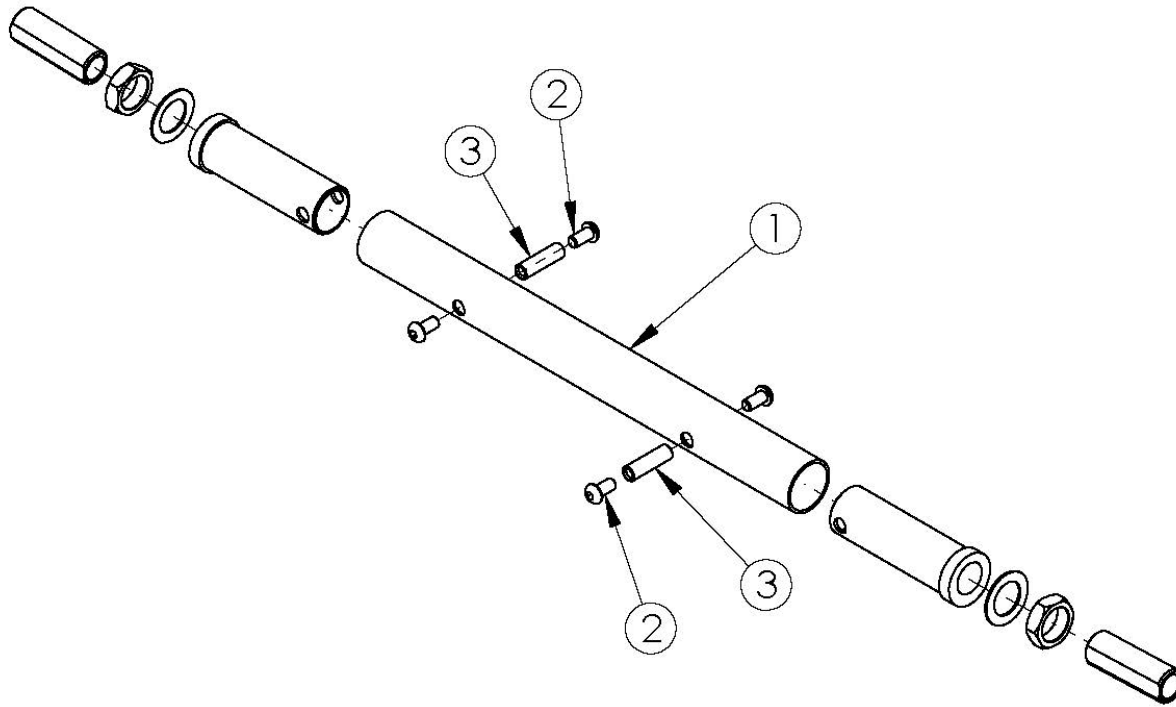


Little Wave XP Camber Tube - Growth



Camber Tube based on seat width A new Camber Tube is required when changing the degree of camber by more than 2° If Wheelchair Drive Ready Option is present, replacement parts need to be processed through Alber USA

| Item Number | Part Number | Description | Quantity |
|-------------|-------------|---------------------------------|----------|
| 1a | 500720 | Camber Tube Rigid 10" Kit Black | 1 |
| 1b | 500721 | Camber Tube Rigid 11" Kit Black | 1 |
| 1c | 500722 | Camber Tube Rigid 12" Kit Black | 1 |
| 1d | 500723 | Camber Tube Rigid 13" Kit Black | 1 |
| 1e | 500724 | Camber Tube Rigid 14" Kit Black | 1 |
| 1f | 500725 | Camber Tube Rigid 15" Kit Black | 1 |
| 1g | 500726 | Camber Tube Rigid 16" Kit Black | 1 |
| 1h | 500727 | Camber Tube Rigid 17" Kit Black | 1 |
| 1i | 500728 | Camber Tube Rigid 18" Kit Black | 1 |

| Item Number | Part Number | Description | Quantity |
|--------------------|--------------------|---------------------------------|-----------------|
| 1j | 500729 | Camber Tube Rigid 19" Kit Black | 1 |
| 2 | 100667 | M6 x 12 BTN SHCS BLKZC w/Patch | 4 |
| 3 | 000066 | M6 x 27 Threaded Barrel | 2 |