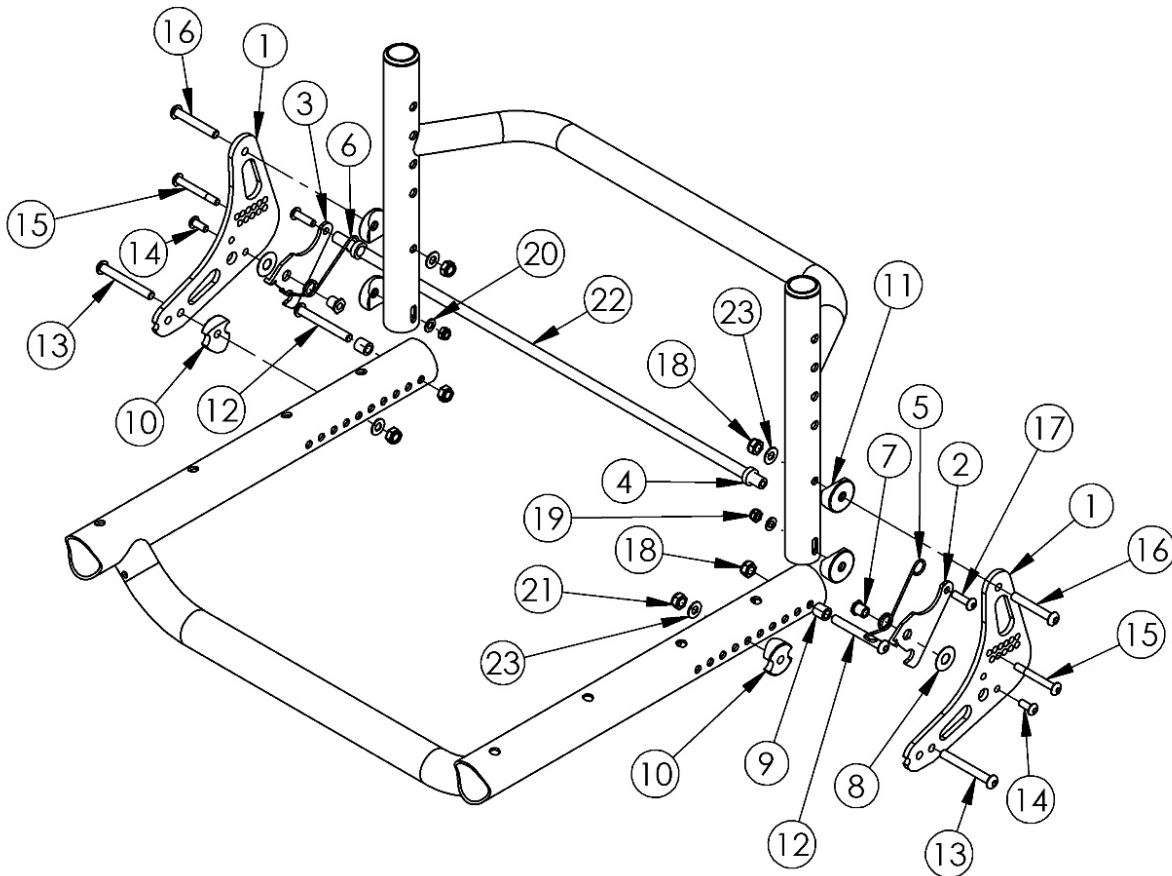


Rogue ALX / Little Wave XP Backrest Mount and Hardware (Formerly Tsunami)



Backrest Release Bar based on seat width This Rogue ALX Backrest Mount and Hardware is only used with the Rogue ALX Style Backrest If chair is Heavy Duty, please see the Aluminum Tsunami Heavy Duty Backrest Mount and Hardware page

Item Number	Part Number	Description	Quantity
1-3, 5-21, 23	500712	Backrest Plate Kit AL TSU/LW <i>This kit contains the parts/hardware for the left and right side. This does not include a backrest release bar or spring retainers.</i>	1
22a, 4	503343	Backrest Release Bar with Retainers 10"	1
22b, 4	503344	Backrest Release Bar with Retainers 11"	1
22c, 4	503345	Backrest Release Bar with Retainers 12"	1
22d, 4	503346	Backrest Release Bar with Retainers 13"	1

Item Number	Part Number	Description	Quantity
22e, 4	503347	Backrest Release Bar with Retainers 14"	1
22f, 4	503348	Backrest Release Bar with Retainers 15"	1
22g, 4	503349	Backrest Release Bar with Retainers 16"	1
22h, 4	503350	Backrest Release Bar with Retainers 17"	1
22i, 4	503351	Backrest Release Bar with Retainers 18"	1
22j, 4	503352	Backrest Release Bar with Retainers 19"	1
22k, 4	503353	Backrest Release Bar with Retainers 20"	1
22l, 4	503354	Backrest Release Bar with Retainers 21"	1
22m, 4	503355	Backrest Release Bar with Retainers 22"	1
1	000448	Backrest Plate, RG ALX/LW XP	2
2	000228-L	Backrest Latch Left, RG ALX/LW XP	1
3	000228-R	Backrest Latch Right, RG ALX/LW XP	1
4	000432	Backrest Latch Spring Retainer, RG ALX/LW XP	2
5	000418L	Backrest Latch Spring Left, RG ALX/LW XP	1
6	000418R	Backrest Latch Spring Right, RG ALX/LW XP	1
7	000420	Backrest Latch Pivot Bushing	2
8	000428	Wear Washer	2
9	000240	Backrest Latch Strike Bushing / Close Mount Handrim Spacer	2
10	000248	Saddle 1.375"	2
11	000055	Saddle 1"	4
12	101124	M6 x 50 Low SHCS BLK ZC	2
13a	101125	M6 x 55 BTN SHCS BLKZC <i>Used when bolt mounts the back plate to the frame, no engagement to the tower</i>	2
13b	101126	M6 x 60 BTN SHCS BLKZC <i>Used when bolt goes through tower and slide, but not backrest plate</i>	2
13c	101127	M6 x 65 BTN SHCS BLKZC <i>Used when bolt goes through backrest plate and tower</i>	2
13d	101128	M6 x 70 BTN SHCS BLKZC	2

Item Number	Part Number	Description	Quantity
		<i>Used when bolt goes through backrest plate, tower and slide</i>	
14	100669	M5 x 10 BTN SHCS BLKZC w/Patch	2
15	101121	M5 x 40 CLS8.8 DIN7984 Low SHCS BLKZC	2
16	100797	M6 x 40 BHCS BLK ZC	2
17	101766	M5 x 10 CLS12.9 DIN912 SHCS PLN	2
18	100658	M6 Nylock Nut Blk Zn	4
19	100657	M5 Nylock Nut Blk Zn	2
20	101856	Flat Washer, M5, Blk Zn	2
21	101456	M6 Ovl Top L/N ZC	2
23	100746	M6 Flat Washer Blk Zn	2