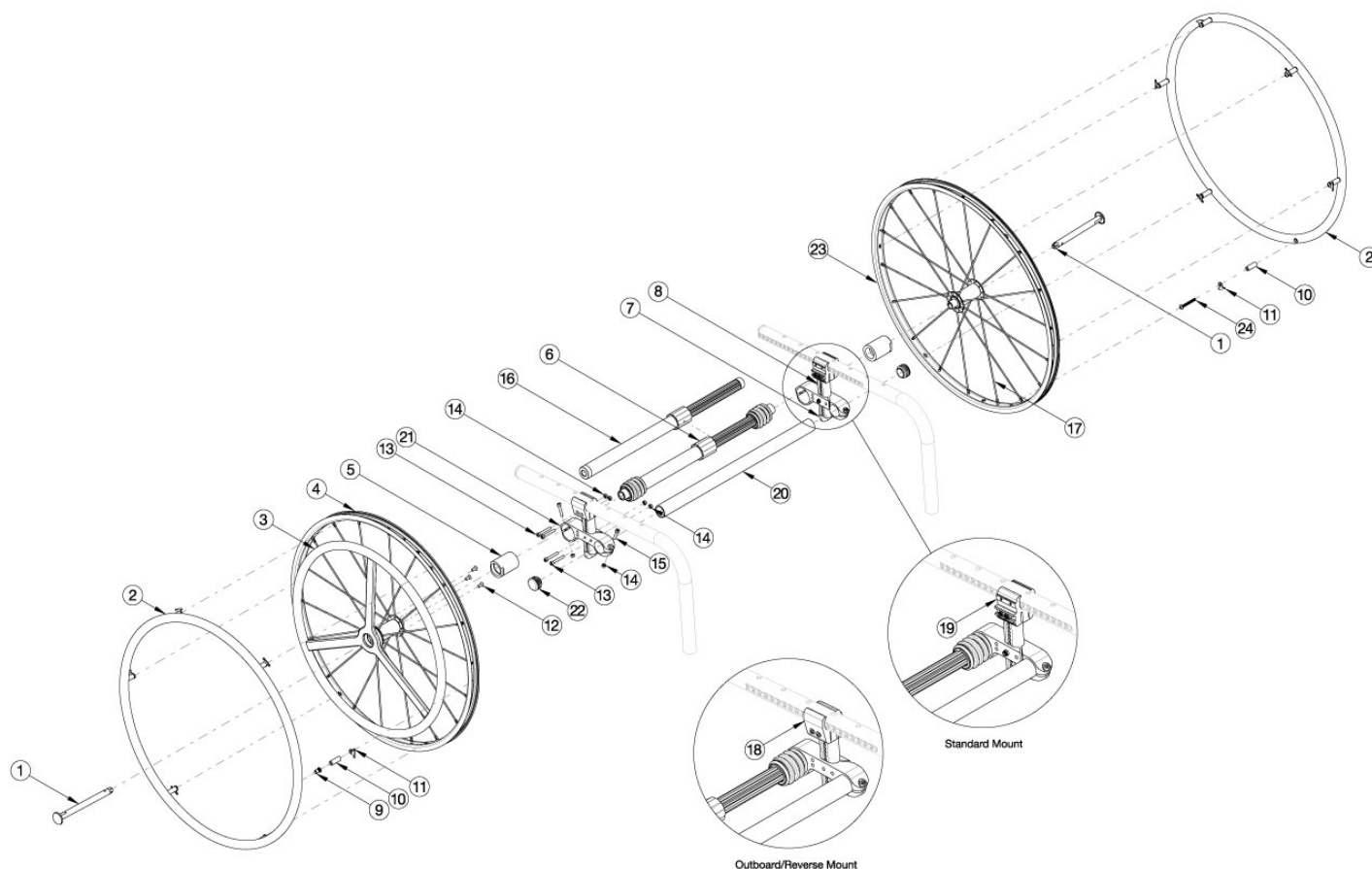


# Clik 20" One Arm Drive Quick Release - Poly Coated Drive Handrim



One Arm Drive Kits do not include rear tires. For a complete retrofit, select the desired retrofit kit in addition to the One Arm Drive Camber Tube Kit (based on seat width). If retrofitting to add the One Arm Drive, new rear towers and tower clamps are required in addition to the complete One Arm Drive system. Check Drive Shaft Guide to determine if outboard or standard clamps are needed. Outboard clamps are included in retrofit kits. If standard clamps are required, please see camber mount towers page and add standard clamps. New rear towers will be needed with both outboard and standard clamps. Effective 5/13/2022, all One Arm Drives will be shipped with a close mounted handrim on the non-drive wheel.

| Item Number                             | Part Number | Description   | Quantity |
|---|-------------|---|----------|
| 1, 2a, 3, 4a, 5a, 9-15, 16a, 18, 21, 23 | 115188      | Clik Quick Release One Arm Drive Retrofit Kit, 0° Camber, 20" Spoke with Poly Coated Drive Handrim, Aluminum Non Drive Handrim, 177-255mm Drive Shaft | 1        |
| 1, 2a, 3, 4a, 5a, 9-15, 16b, 18, 21, 23 | 115189      | Clik Quick Release One Arm Drive Retrofit Kit, 0° Camber, 20" Spoke with Poly Coated Drive Handrim, Aluminum Non Drive Handrim, 225-295mm Drive Shaft | 1        |
| 1, 2a, 3, 4a, 5a, 9-15, 16c, 18, 21, 23 | 115190      | Clik Quick Release One Arm Drive Retrofit Kit, 0° Camber, 20" Spoke with Poly Coated Drive Handrim, Aluminum Non Drive Handrim, 260-370mm Drive Shaft | 1        |

| Item Number                             | Part Number | Description   | Quantity |
|---|-------------|---|----------|
| 1, 2a, 3, 4a, 5a, 9-15, 16d, 18, 21, 23 | 115191      | Clik Quick Release One Arm Drive Retrofit Kit, 0° Camber, 20" Spoke with Poly Coated Drive Handrim, Aluminum Non Drive Handrim, 330-440mm Drive Shaft       | 1        |
| 1, 2a, 3, 4a, 5b, 6a, 9-15, 18, 21, 23  | 115192      | Clik Quick Release One Arm Drive Retrofit Kit, 2° Camber, 20" Spoke with Poly Coated Drive Handrim, Aluminum Non Drive Handrim, 170-195mm Drive Shaft       | 1        |
| 1, 2a, 3, 4a, 5b, 6b, 9-15, 18, 21, 23  | 115193      | Clik Quick Release One Arm Drive Retrofit Kit, 2° Camber, 20" Spoke with Poly Coated Drive Handrim, Aluminum Non Drive Handrim, 180-210mm Drive Shaft       | 1        |
| 1, 2a, 3, 4a, 5b, 6c, 9-15, 18, 21, 23  | 115194      | Clik Quick Release One Arm Drive Retrofit Kit, 2° Camber, 20" Spoke with Poly Coated Drive Handrim, Aluminum Non Drive Handrim, 195-235mm Drive Shaft       | 1        |
| 1, 2a, 3, 4a, 5b, 6d, 9-15, 18, 21, 23  | 115195      | Clik Quick Release One Arm Drive Retrofit Kit, 2° Camber, 20" Spoke with Poly Coated Drive Handrim, Aluminum Non Drive Handrim, 220-280mm Drive Shaft       | 1        |
| 1, 2a, 3, 4a, 5b, 6e, 9-15, 18, 21, 23  | 115196      | Clik Quick Release One Arm Drive Retrofit Kit, 2° Camber, 20" Spoke with Poly Coated Drive Handrim, Aluminum Non Drive Handrim, 270-330mm Drive Shaft       | 1        |
| 1, 2a, 3, 4a, 5b, 6f, 9-15, 18, 21, 23  | 115197      | Clik Quick Release One Arm Drive Retrofit Kit, 2° Camber, 20" Spoke with Poly Coated Drive Handrim, Aluminum Non Drive Handrim, 295-370mm Drive Shaft       | 1        |
| 1, 2a, 3, 4a, 5b, 6g, 9-15, 18, 21, 23  | 115198      | Clik Quick Release One Arm Drive Retrofit Kit, 2° Camber, 20" Spoke with Poly Coated Drive Handrim, Aluminum Non Drive Handrim, 350-460mm Drive Shaft       | 1        |
| 1, 2a, 3, 4a, 5c, 6c, 9-15, 18, 21, 23  | 115199      | Clik Quick Release One Arm Drive Retrofit Kit, 4° Camber, 20" Spoke with Poly Coated Drive Handrim, Aluminum Non Drive Handrim, 195-235mm Drive Shaft       | 1        |
| 1, 2a, 3, 4a, 5c, 6d, 9-15, 18, 21, 23  | 115200      | Clik Quick Release One Arm Drive Retrofit Kit, 4° Camber, 20" Spoke with Poly Coated Drive Handrim, Aluminum Non Drive Handrim, 220-280mm Drive Shaft       | 1        |
| 1, 2a, 3, 4a, 5c, 6e, 9-15, 18, 21, 23  | 115201      | Clik Quick Release One Arm Drive Retrofit Kit, 4° Camber, 20" Spoke with Poly Coated Drive Handrim, Aluminum Non Drive Handrim, 270-330mm Drive Shaft       | 1        |
| 1, 2a, 3, 4a, 5c, 6f, 9-15, 18, 21, 23  | 115202      | Clik Quick Release One Arm Drive Retrofit Kit, 4° Camber, 20" Spoke with Poly Coated Drive Handrim, Aluminum Non Drive Handrim, 295-370mm Drive Shaft       | 1        |
| 1, 2a, 3, 4a, 5c, 6g, 9-15, 18, 21, 23  | 115203      | Clik Quick Release One Arm Drive Retrofit Kit, 4° Camber, 20" Spoke with Poly Coated Drive Handrim, Aluminum Non Drive Handrim, 350-460mm Drive Shaft       | 1        |
| 1, 2b, 3, 4a, 5a, 9-15, 16a, 18, 21, 23 | 121621      | Clik Quick Release One Arm Drive Retrofit Kit, 0° Camber, 20" Spoke with Poly Coated Drive Handrim, Plastic Coated Non Drive Handrim, 177-255mm Drive Shaft | 1        |

| Item Number                                   | Part Number | Description  | Quantity |
|---|-------------|--|----------|
| 1, 2b, 3, 4a,<br>5a, 9-15, 16b,<br>18, 21, 23 | 121622      | Clik Quick Release One Arm Drive Retrofit Kit, 0°<br>Camber, 20" Spoke with Poly Coated Drive<br>Handrim, Plastic Coated Non Drive Handrim,<br>225-295mm Drive Shaft | 1        |
| 1, 2b, 3, 4a,<br>5a, 9-15, 16c,<br>18, 21, 23 | 121623      | Clik Quick Release One Arm Drive Retrofit Kit, 0°<br>Camber, 20" Spoke with Poly Coated Drive<br>Handrim, Plastic Coated Non Drive Handrim,<br>260-370mm Drive Shaft | 1        |
| 1, 2b, 3, 4a,<br>5a, 9-15, 16d,<br>18, 21, 23 | 121624      | Clik Quick Release One Arm Drive Retrofit Kit, 0°<br>Camber, 20" Spoke with Poly Coated Drive<br>Handrim, Plastic Coated Non Drive Handrim,<br>330-440mm Drive Shaft | 1        |
| 1, 2b, 3, 4a,<br>5b, 6a, 9-15,<br>18, 21, 23  | 121625      | Clik Quick Release One Arm Drive Retrofit Kit, 2°<br>Camber, 20" Spoke with Poly Coated Drive<br>Handrim, Plastic Coated Non Drive Handrim,<br>170-195mm Drive Shaft | 1        |
| 1, 2b, 3, 4a,<br>5b, 6b, 9-15,<br>18, 21, 23  | 121626      | Clik Quick Release One Arm Drive Retrofit Kit, 2°<br>Camber, 20" Spoke with Poly Coated Drive<br>Handrim, Plastic Coated Non Drive Handrim,<br>180-210mm Drive Shaft | 1        |
| 1, 2b, 3, 4a,<br>5b, 6c, 9-15,<br>18, 21, 23  | 121627      | Clik Quick Release One Arm Drive Retrofit Kit, 2°<br>Camber, 20" Spoke with Poly Coated Drive<br>Handrim, Plastic Coated Non Drive Handrim,<br>195-235mm Drive Shaft | 1        |
| 1, 2b, 3, 4a,<br>5b, 6d, 9-15,<br>18, 21, 23  | 121628      | Clik Quick Release One Arm Drive Retrofit Kit, 2°<br>Camber, 20" Spoke with Poly Coated Drive<br>Handrim, Plastic Coated Non Drive Handrim,<br>220-280mm Drive Shaft | 1        |
| 1, 2b, 3, 4a,<br>5b, 6e, 9-15,<br>18, 21, 23  | 121629      | Clik Quick Release One Arm Drive Retrofit Kit, 2°<br>Camber, 20" Spoke with Poly Coated Drive<br>Handrim, Plastic Coated Non Drive Handrim,<br>270-330mm Drive Shaft | 1        |
| 1, 2b, 3, 4a,<br>5b, 6f, 9-15,<br>18, 21, 23  | 121630      | Clik Quick Release One Arm Drive Retrofit Kit, 2°<br>Camber, 20" Spoke with Poly Coated Drive<br>Handrim, Plastic Coated Non Drive Handrim,<br>295-370mm Drive Shaft | 1        |
| 1, 2b, 3, 4a,<br>5b, 6g, 9-15,<br>18, 21, 23  | 121631      | Clik Quick Release One Arm Drive Retrofit Kit, 2°<br>Camber, 20" Spoke with Poly Coated Drive<br>Handrim, Plastic Coated Non Drive Handrim,<br>350-460mm Drive Shaft | 1        |
| 1, 2b, 3, 4a, 5c,<br>6c, 9-15, 18,<br>21, 23  | 121632      | Clik Quick Release One Arm Drive Retrofit Kit, 4°<br>Camber, 20" Spoke with Poly Coated Drive<br>Handrim, Plastic Coated Non Drive Handrim,<br>195-235mm Drive Shaft | 1        |
| 1, 2b, 3, 4a, 5c,<br>6d, 9-15, 18,<br>21, 23  | 121633      | Clik Quick Release One Arm Drive Retrofit Kit, 4°<br>Camber, 20" Spoke with Poly Coated Drive<br>Handrim, Plastic Coated Non Drive Handrim,<br>220-280mm Drive Shaft | 1        |
| 1, 2b, 3, 4a, 5c,<br>6e, 9-15, 18,<br>21, 23  | 121634      | Clik Quick Release One Arm Drive Retrofit Kit, 4°<br>Camber, 20" Spoke with Poly Coated Drive<br>Handrim, Plastic Coated Non Drive Handrim,<br>270-330mm Drive Shaft | 1        |
| 1, 2b, 3, 4a, 5c,<br>6f, 9-15, 18,<br>21, 23  | 121635      | Clik Quick Release One Arm Drive Retrofit Kit, 4°<br>Camber, 20" Spoke with Poly Coated Drive<br>Handrim, Plastic Coated Non Drive Handrim,<br>295-370mm Drive Shaft | 1        |

| Item Number                            | Part Number | Description  | Quantity |
|--|-------------|--|----------|
| 1, 2b, 3, 4a, 5c, 6g, 9-15, 18, 21, 23 | 121636      | Clik Quick Release One Arm Drive Retrofit Kit, 4° Camber, 20" Spoke with Poly Coated Drive Handrim, Plastic Coated Non Drive Handrim, 350-460mm Drive Shaft  | 1        |
| 1, 2a, 10b, 11, 23, 24                 | 119587      | Quick Release One Arm Drive, 20" Spoke Wheel with Axle (Driven Side) and Close Mounted Aluminum Handrim  | 1        |
| 1, 2b, 10b, 11, 23, 24                 | 121853      | Quick Release One Arm Drive, 20" Spoke Wheel with Axle (Driven Side) and Close Mounted Plastic Coated Handrim  | 1        |
| 1, 3, 4a, 13                           | 115286      | Quick Release One Arm Drive Drive, 20" Spoke Wheel with Axle and Poly Coated Drive Handrim<br><i>If replacing wheels and tires but NOT handrims. Add handrim hardware for pre-existing handrims.</i> | 1        |
| 2a, 10b, 11, 24                        | 116447      | Aluminum Anodized Handrim 6 Rivet Nut 20" with Close Mount Hardware, Non-Drive Side  | 1        |
| 2b, 10b, 11, 24                        | 121850      | Plastic Coated Handrim 6 Rivet Nut 20" with Close Mount Hardware, Non-Drive Side   | 1        |
| 3                                      | 112433      | Quick Release One Arm Drive, Poly Coated Drive Side Handrim for 20" Wheel<br><i>Does not include mounting hardware</i>   | 1        |
| 5a                                     | 107031      | One Arm Drive Quick Release Camber Plug w/Bearings - 0° Camber   | 1        |
| 5b                                     | 003170      | One Arm Drive Quick Release Camber Plug w/Bearings - 2° Camber   | 1        |
| 5c                                     | 003171      | One Arm Drive Quick Release Camber Plug w/Bearings - 4° Camber   | 1        |
| 5a, 21                                 | 108074      | One Arm Drive Rogue/Clik Axle Mount 0 Degree Camber PAIR   | 1        |
| 5b, 21                                 | 003209      | One Arm Drive Rogue/Clik Axle Mount 2 Degree Camber, PAIR  | 1        |
| 5c, 21                                 | 003210      | One Arm Drive Rogue/Clik Axle Mount 4 Degree Camber Each   | 2        |
| 6a                                     | 111858      | One Arm Drive - Quick Release Camber Drive Shaft 170-195mm   | 1        |
| 6b                                     | 111627      | One Arm Drive - Quick Release Camber Drive Shaft 180-210mm   | 1        |
| 6c                                     | 111628      | One Arm Drive - Quick Release Camber Drive Shaft 195-235mm   | 1        |
| 6d                                     | 111498      | One Arm Drive - Quick Release Camber Drive Shaft 220-280mm   | 1        |
| 6e                                     | 111499      | One Arm Drive - Quick Release Camber Drive Shaft 270-330mm   | 1        |
| 6f                                     | 111500      | One Arm Drive - Quick Release Camber Drive Shaft 295-370mm   | 1        |
| 6g                                     | 111501      | One Arm Drive - Quick Release Camber Drive Shaft 350-460mm   | 1        |
| 7                                      | 000920      | Camber Mount Cap Rigid   | 2        |
| 8a                                     | 000925      | Camber Mount Tower Long Black Anodized Rigid   | 2        |
| 8b                                     | 000925_ _ _ | Color Anodized/Color Accent Camber Mount Tower Long Rigid  | 2        |
| 8c                                     | 000926      | Camber Mount Tower Extra Long Black Anodized Rigid   | 2        |

| Item Number | Part Number | Description  | Quantity |
|-------------|-------------|--|----------|
| 8d          | 000926_ _ _ | Color Anodized/Color Accent Camber Mount Tower Extra Long Rigid  | 2        |
| 9           | 122063      | PHMS, M5x0.8x40, CLS4.8, PHL, BLZ, NYL, DIN7985, Custom  | 6        |
| 10a         | 100653      | Handrim Spacer Spoke   | 6        |
| 11          | 100698      | Handrim Tab  | 6        |
| 9, 10a, 11  | 502168      | Handrim Hardware Kit, 6 Rivet Nut, EACH  | 1        |
| 12          | 103522      | M5 x 0.8 x 12 FHCS CLS 10.9 Nyl Blk Zn DIN7991   | 3        |
| 13          | 101734      | M5 x 35 SHCS BLK ZC  | 8        |
| 14          | 100657      | M5 Nylock Nut Blk Zn   | 6        |
| 15          | 101717      | M5 x 25 SHCS BLK ZC  | 2        |
| 16a         | 111503      | One Arm Drive - Quick Release Zero Camber Drive Shaft 177-255mm  | 1        |
| 16b         | 111504      | One Arm Drive - Quick Release Zero Camber Drive Shaft 225-295mm  | 1        |
| 16c         | 111505      | One Arm Drive - Quick Release Zero Camber Drive Shaft 260-370mm  | 1        |
| 16d         | 111506      | One Arm Drive - Quick Release Zero Camber Drive Shaft 330-440mm  | 1        |
| 17c         | 111515      | Replacement Spoke, Quick Release One Arm Drive, 24"  | 1        |
| 18          | 003366      | One Arm Drive Tower Clamp, Outboard Mount, Klik<br><i>Reference Klik One Arm Drive (Quick Release) - Drive Shaft Chart for configurations where used</i> | 2        |
| 19          | 111822      | Tower Clamp Mount, Klik<br><i>Reference Klik One Arm Drive (Quick Release) - Drive Shaft Chart for configurations where used</i>                         | 2        |
| 20a         | 003369      | One Arm Drive Camber Tube 11" Kit, Klik / Rogue XP<br><i>Does not include tube end plugs</i>   | 1        |
| 20b         | 003370      | One Arm Drive Camber Tube 12" Kit, Klik / Rogue / Rogue XP<br><i>Does not include tube end plugs</i>   | 1        |
| 20c         | 003371      | One Arm Drive Camber Tube 13" Kit, Klik / Rogue / Rogue XP<br><i>Does not include tube end plugs</i>   | 1        |
| 20d         | 003372      | One Arm Drive Camber Tube 14" Kit, Klik / Rogue / Rogue XP<br><i>Does not include tube end plugs</i>   | 1        |
| 20e         | 003373      | One Arm Drive Camber Tube 15" Kit, Klik / Rogue / Rogue XP<br><i>Does not include tube end plugs</i>   | 1        |
| 20f         | 003374      | One Arm Drive Camber Tube 16" Kit, Klik / Rogue / Rogue XP<br><i>Does not include tube end plugs</i>   | 1        |

| Item Number | Part Number | Description   | Quantity |
|-------------|-------------|---|----------|
| 20g         | 003708      | One Arm Drive Camber Tube 17" Kit, Klik /<br>Rogue / Rogue XP<br><i>Does not include tube end plugs</i> | 1        |
| 20h         | 003709      | One Arm Drive Camber Tube 18" Kit, Klik /<br>Rogue / Rogue XP<br><i>Does not include tube end plugs</i> | 1        |
| 22          | 100532      | Tube End Plug 1 1/8"  | 2        |
| 24          | 122065      | BHCS, M5x0.8x25, CLS12.9, BLZ, NYL,<br>ISO7380, Custom  | 1        |

# Clik Quick Release One Arm Drive Shaft Guide

| DRIVE SHAFT LENGTH FOR CLIK WITH OMIT OR SWING AWAY ARMS |               |        |   |             |
|--|---------------|--------|---|-------------|
| CLIK SEAT WIDTH  | WHEEL SPACING | CAMBER | DESCRIPTION   | PART NUMBER |
| SEAT WIDTH 11"   | 1.75          | 0      | QUICK RELEASE OAD ZERO CAMBER DRIVE SHAFT 177-255MM | ~111503     |
|  | .75, 1        | 2      | QUICK RELEASE OAD CAMBER DRIVE SHAFT 170-195MM      | #111858     |
|  | 1.25          | 2      | QUICK RELEASE OAD CAMBER DRIVE SHAFT 180-210MM      | #111627     |
|  | 1.5           | 2      | QUICK RELEASE OAD CAMBER DRIVE SHAFT 195-235MM      | #111628     |
|  | 1.75          | 2      | QUICK RELEASE OAD CAMBER DRIVE SHAFT 195-235MM      | ~111628     |
|  | 1             | 4      | QUICK RELEASE OAD CAMBER DRIVE SHAFT 195-235MM      | ~111628     |
|  | 1.25          | 4      | QUICK RELEASE OAD CAMBER DRIVE SHAFT 220-280MM      | ~111498     |
| SEAT WIDTH 12"   | 1.5           | 0      | QUICK RELEASE OAD ZERO CAMBER DRIVE SHAFT 177-255MM | 111503      |
|  | 1.75          | 0      | QUICK RELEASE OAD ZERO CAMBER DRIVE SHAFT 177-255MM | ~111503     |
|  | .75, 1        | 2      | QUICK RELEASE OAD CAMBER DRIVE SHAFT 180-210MM      | #111627     |
|  | 1.25, 1.5     | 2      | QUICK RELEASE OAD CAMBER DRIVE SHAFT 195-235MM      | 111628      |
|  | 1.75          | 2      | QUICK RELEASE OAD CAMBER DRIVE SHAFT 220-280MM      | ~111498     |
|  | 0.75          | 4      | QUICK RELEASE OAD CAMBER DRIVE SHAFT 195-235MM      | 111628      |
|  | 1             | 4      | QUICK RELEASE OAD CAMBER DRIVE SHAFT 220-280MM      | ~111498     |
| SEAT WIDTH 13"   | 1.25          | 4      | QUICK RELEASE OAD CAMBER DRIVE SHAFT 220-280MM      | ~111498     |
|  | 1, 1.25, 1.5  | 0      | QUICK RELEASE OAD ZERO CAMBER DRIVE SHAFT 177-255MM | 111503      |
|  | 1.75          | 0      | QUICK RELEASE OAD ZERO CAMBER DRIVE SHAFT 225-295MM | ~111504     |
|  | .75, 1        | 2      | QUICK RELEASE OAD CAMBER DRIVE SHAFT 195-235MM      | 111628      |
|  | 1.25, 1.5     | 2      | QUICK RELEASE OAD CAMBER DRIVE SHAFT 220-280MM      | 111498      |
|  | 1.75          | 2      | QUICK RELEASE OAD CAMBER DRIVE SHAFT 220-280MM      | ~111498     |
|  | 0.75          | 4      | QUICK RELEASE OAD CAMBER DRIVE SHAFT 220-280MM      | 111498      |
| SEAT WIDTH 14"   | 1             | 4      | QUICK RELEASE OAD CAMBER DRIVE SHAFT 220-280MM      | ~111498     |
|  | 1.25          | 4      | QUICK RELEASE OAD CAMBER DRIVE SHAFT 270-330MM      | ~111499     |
|  | 1, 1.25       | 0      | QUICK RELEASE OAD ZERO CAMBER DRIVE SHAFT 177-255MM | 111503      |
|  | 1.5           | 0      | QUICK RELEASE OAD ZERO CAMBER DRIVE SHAFT 225-295MM | 111504      |
|  | 1.75          | 0      | QUICK RELEASE OAD ZERO CAMBER DRIVE SHAFT 225-295MM | ~111504     |
|  | .75, 1, 1.25  | 2      | QUICK RELEASE OAD CAMBER DRIVE SHAFT 220-280MM      | 111498      |
|  | 1.5           | 2      | QUICK RELEASE OAD CAMBER DRIVE SHAFT 270-330MM      | #111499     |
|  | 1.75          | 2      | QUICK RELEASE OAD CAMBER DRIVE SHAFT 270-330MM      | ~111499     |
|  | 0.75          | 4      | QUICK RELEASE OAD CAMBER DRIVE SHAFT 270-330MM      | #111499     |
|  | 1             | 4      | QUICK RELEASE OAD CAMBER DRIVE SHAFT 270-330MM      | ~111499     |
|  | 1.25          | 4      | QUICK RELEASE OAD CAMBER DRIVE SHAFT 270-330MM      | ~111499     |
|  |               |        |   |             |

| Clik No-Go Configurations |        |               |                  |
|---------------------------|--------|---------------|------------------|
| Wheel Size                | Camber | Wheel Spacing | Rear Seat Height |
| 24                        | 0      | 1             | 14.5             |
| 24                        | 0      | 1             | 15               |
| 24                        | 0      | 1             | 15.5             |
| 22                        | 0      | 1             | 14.5             |
| 22                        | 0      | 1             | 15               |
| 22                        | 0      | 1             | 15.5             |
| 20                        | 0      | 1             | 12.5             |
| 20                        | 0      | 1             | 13               |

Seat width less than 16" + any rear wheel camber  
+ any 5<sup>th</sup> wheel = N/A with QR OAD

#For this configuration, one wheel must be removed before the driveshaft can be installed. The second wheel can be installed once the drive shaft is in position.

~For this configuration, tower assemblies are to be mounted outboard of the frame.

NOTE: Tower assemblies must be mounted outboard of the frame when offset frames are used.

NOTE: 1.25" minimum wheel spacing is required when side guards are used.

# Clik Quick Release One Arm Drive Shaft Guide

| DRIVE SHAFT LENGTH FOR CLIK WITH OMIT OR SWING AWAY ARMS |                    |        |   |             |
|--|--------------------|--------|---|-------------|
| CLIK SEAT WIDTH  | WHEEL SPACING      | CAMBER | DESCRIPTION   | PART NUMBER |
| SEAT WIDTH 15"   | 1, 1.25, 1.5       | 0      | QUICK RELEASE OAD ZERO CAMBER DRIVE SHAFT 225-295MM | 111504      |
|  | 1.75               | 0      | QUICK RELEASE OAD ZERO CAMBER DRIVE SHAFT 260-370MM | ~111505     |
|  | 0.75               | 2      | QUICK RELEASE OAD CAMBER DRIVE SHAFT 220-280MM      | 111498      |
|  | 1                  | 2      | QUICK RELEASE OAD CAMBER DRIVE SHAFT 270-330MM      | #111499     |
|  | 1.25, 1.5          | 2      | QUICK RELEASE OAD CAMBER DRIVE SHAFT 270-330MM      | 111499      |
|  | 1.75               | 2      | QUICK RELEASE OAD CAMBER DRIVE SHAFT 295-370MM      | ~111500     |
|  | 0.75               | 4      | QUICK RELEASE OAD CAMBER DRIVE SHAFT 270-330MM      | 111499      |
|  | 1                  | 4      | QUICK RELEASE OAD CAMBER DRIVE SHAFT 295-370MM      | ~111500     |
|  | 1.25               | 4      | QUICK RELEASE OAD CAMBER DRIVE SHAFT 295-370MM      | ~111500     |
| SEAT WIDTH 16"   | 1                  | 0      | QUICK RELEASE OAD ZERO CAMBER DRIVE SHAFT 225-295MM | 111504      |
|  | 1.25, 1.5          | 0      | QUICK RELEASE OAD ZERO CAMBER DRIVE SHAFT 260-370MM | 111505      |
|  | 1.75               | 0      | QUICK RELEASE OAD ZERO CAMBER DRIVE SHAFT 260-370MM | ~111505     |
|  | 0.75, 1            | 2      | QUICK RELEASE OAD CAMBER DRIVE SHAFT 270-330MM      | 111499      |
|  | 1.25, 1.5          | 2      | QUICK RELEASE OAD CAMBER DRIVE SHAFT 295-370MM      | 111500      |
|  | 1.75               | 2      | QUICK RELEASE OAD CAMBER DRIVE SHAFT 295-370MM      | ~111500     |
|  | 0.75               | 4      | QUICK RELEASE OAD CAMBER DRIVE SHAFT 295-370MM      | 111500      |
|  | 1                  | 4      | QUICK RELEASE OAD CAMBER DRIVE SHAFT 295-370MM      | ~111500     |
|  | 1.25               | 4      | QUICK RELEASE OAD CAMBER DRIVE SHAFT 295-370MM      | ~111500     |
| SEAT WIDTH 17"   | 1, 1.25, 1.5       | 0      | QUICK RELEASE OAD ZERO CAMBER DRIVE SHAFT 260-370MM | 111505      |
|  | 1.75               | 0      | QUICK RELEASE OAD ZERO CAMBER DRIVE SHAFT 330-440MM | ~111506     |
|  | 0.75, 1, 1.25, 1.5 | 2      | QUICK RELEASE OAD CAMBER DRIVE SHAFT 295-370MM      | 111500      |
|  | 1.75               | 2      | QUICK RELEASE OAD CAMBER DRIVE SHAFT 350-460MM      | ~111501     |
|  | 0.75               | 4      | QUICK RELEASE OAD CAMBER DRIVE SHAFT 295-370MM      | 111500      |
|  | 1                  | 4      | QUICK RELEASE OAD CAMBER DRIVE SHAFT 350-460MM      | ~111501     |
|  | 1.25               | 4      | QUICK RELEASE OAD CAMBER DRIVE SHAFT 350-460MM      | ~111501     |
| SEAT WIDTH 18"   | 1, 1.25            | 0      | QUICK RELEASE OAD ZERO CAMBER DRIVE SHAFT 260-370MM | 111505      |
|  | 1.5                | 0      | QUICK RELEASE OAD ZERO CAMBER DRIVE SHAFT 330-440MM | 111506      |
|  | 1.75               | 0      | QUICK RELEASE OAD ZERO CAMBER DRIVE SHAFT 330-440MM | ~111506     |
|  | 1.25, 1.5          | 2      | QUICK RELEASE OAD CAMBER DRIVE SHAFT 350-460MM      | 111501      |
|  | 1.75               | 2      | QUICK RELEASE OAD CAMBER DRIVE SHAFT 350-460MM      | ~111501     |
|  | 0.75               | 4      | QUICK RELEASE OAD CAMBER DRIVE SHAFT 295-370MM      | 111500      |
|  | 1                  | 4      | QUICK RELEASE OAD CAMBER DRIVE SHAFT 350-460MM      | ~111501     |
|  | 1.25               | 4      | QUICK RELEASE OAD CAMBER DRIVE SHAFT 350-460MM      | ~111501     |

#For this configuration, one wheel must be removed before the driveshaft can be installed. The second wheel can be installed once the drive shaft is in position.

~For this configuration, tower assemblies are to be mounted outboard of the frame.

NOTE: Tower assemblies must be mounted outboard of the frame when offset frames are used.

NOTE: 1.25" minimum wheel spacing is required when side guards are used.



# Clik Quick Release One Arm Drive Shaft Guide

| DRIVE SHAFT LENGTH FOR CLIK WITH T-ARMS |               |        |   |             |
|---|---------------|--------|---|-------------|
| CLIK SEAT WIDTH                         | WHEEL SPACING | CAMBER | DESCRIPTION   | PART NUMBER |
| SEAT WIDTH 11"                          | 1.75          | 0      | QUICK RELEASE OAD ZERO CAMBER DRIVE SHAFT 177-255MM | 111503      |
|   | 1.75          | 2      | QUICK RELEASE OAD CAMBER DRIVE SHAFT 195-235MM      | 111628      |
|   |               |        |   |             |
| SEAT WIDTH 12"                          | 1.75          | 0      | QUICK RELEASE OAD ZERO CAMBER DRIVE SHAFT 177-255MM | 111503      |
|   | 1.75          | 2      | QUICK RELEASE OAD CAMBER DRIVE SHAFT 220-280MM      | 111498      |
|   |               |        |   |             |
| SEAT WIDTH 13"                          | 1.75          | 0      | QUICK RELEASE OAD ZERO CAMBER DRIVE SHAFT 225-295MM | 111504      |
|   | 1.75          | 2      | QUICK RELEASE OAD CAMBER DRIVE SHAFT 220-280MM      | 111498      |
|   |               |        |   |             |
| SEAT WIDTH 14"                          | 1.75          | 0      | QUICK RELEASE OAD ZERO CAMBER DRIVE SHAFT 225-295MM | 111504      |
|   | 1.75          | 2      | QUICK RELEASE OAD CAMBER DRIVE SHAFT 270-330MM      | 111499      |
|   |               |        |   |             |
| SEAT WIDTH 15"                          | 1.75          | 0      | QUICK RELEASE OAD ZERO CAMBER DRIVE SHAFT 260-370MM | 111505      |
|   | 1.75          | 2      | QUICK RELEASE OAD CAMBER DRIVE SHAFT 295-370MM      | 111500      |
|   |               |        |   |             |
| SEAT WIDTH 16"                          | 1.75          | 0      | QUICK RELEASE OAD ZERO CAMBER DRIVE SHAFT 260-370MM | 111505      |
|   | 1.75          | 2      | QUICK RELEASE OAD CAMBER DRIVE SHAFT 295-370MM      | 111500      |
|   |               |        |   |             |
| SEAT WIDTH 17"                          | 1.75          | 0      | QUICK RELEASE OAD ZERO CAMBER DRIVE SHAFT 330-440MM | 111506      |
|   | 1.75          | 2      | QUICK RELEASE OAD CAMBER DRIVE SHAFT 350-460MM      | 111501      |
|   |               |        |   |             |
| SEAT WIDTH 18"                          | 1.75          | 0      | QUICK RELEASE OAD ZERO CAMBER DRIVE SHAFT 330-440MM | 111506      |
|   | 1.75          | 2      | QUICK RELEASE OAD CAMBER DRIVE SHAFT 350-460MM      | 111501      |

NOTE: TOWER ASSEMBLIES MUST BE MOUNTED OUTBOARD OF THE FRAME WHEN T-ARMS ARE USED.

# Color Anodizing Samples

