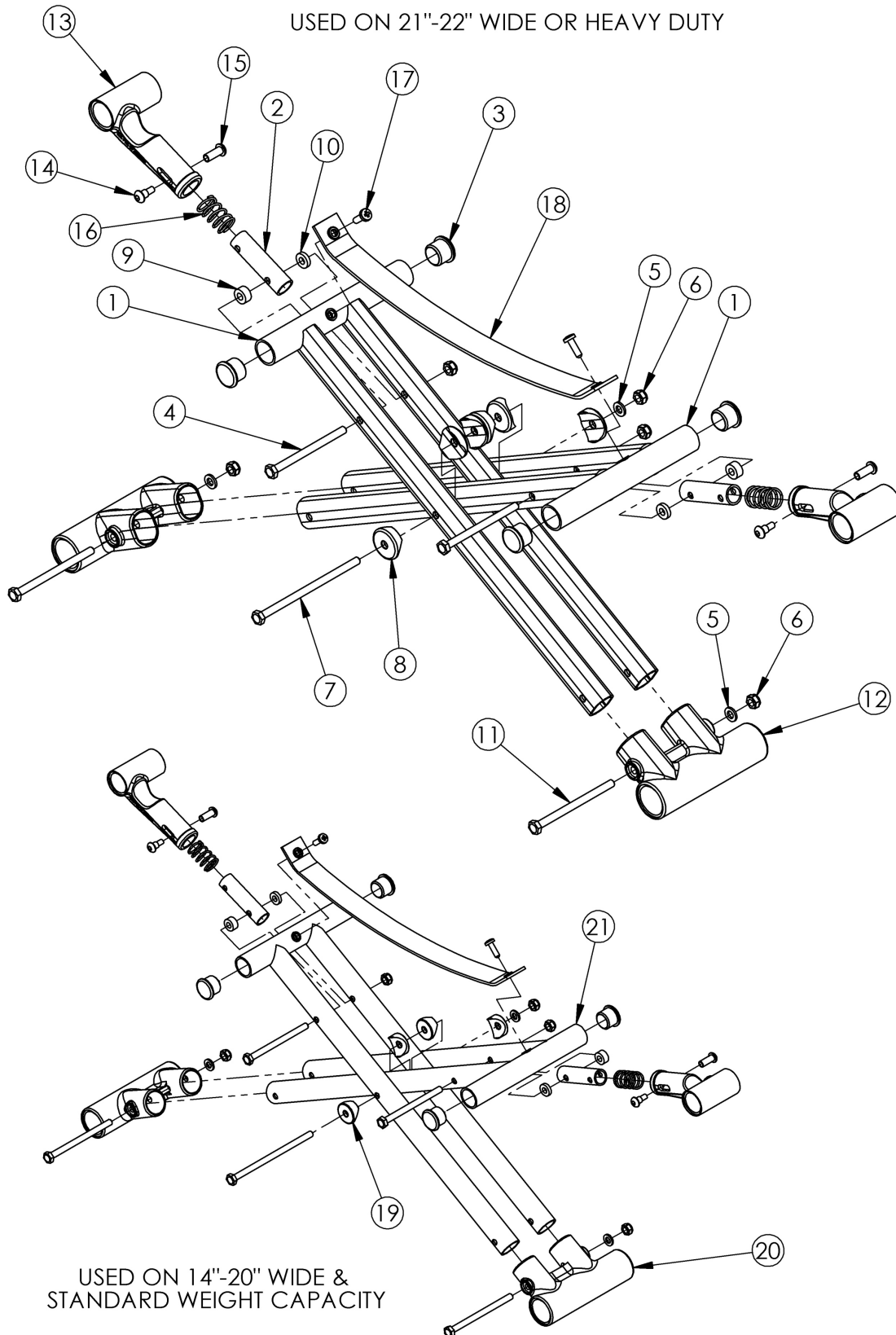


Catalyst 4 Cross Braces - Open Seating (Seating System)



Oval-style cross braces effective 6/15/16 on 21" - 22" wide chairs and chairs with Heavy Duty option. Starting with serial numbers C4018744, C4HD002701. Round-style cross braces are used on 14" - 20" wide chairs with the Standard Weight Capacity. When changing from round-style to oval-style cross braces, lower frame pivots and cross brace hardware are required. Order kit 502177.

Item Number	Part Number	Description	Quantity
2a, 13a, 14-16	500024	Upper Pivot Assembly 14" Width	1
2b, 13b, 14-16	500025	Upper Pivot Assembly 15" Width	1
2c, 13b, 14-16	500026	Upper Pivot Assembly 16" Width	1
2d, 13b, 14-16	500027	Upper Pivot Assembly 17" Width	1
2e, 13b, 14-16	500028	Upper Pivot Assembly 18" Width	1
2f, 13b, 14-16	500029	Upper Pivot Assembly 19" Width	1
2g, 13b, 14-16	500030	Upper Pivot Assembly 20" Width	1
2h, 13b, 14-16	501479	Upper Pivot Assembly 21/22" Width	1
4-11	501398	Round-Style Cross Brace Hardware Kit CAT <i>Used on 14" - 20" Wide and Standard Weight Capacity</i>	1
4-11	503320	Catalyst Cross Brace Hardware Kit <i>Used on 21" -22" Wide or Heavy Duty Option</i>	1
21a, 3	101747	Open Seat Cross Tube 14" Wide CAT <i>Used with Standard Weight Capacity</i>	1
1a, 3	003353	Seating System Cross Brace 14" Wide CAT <i>Used with Heavy Duty Option</i>	1
21b, 3	101748	Open Seat Cross Tube 15" Wide CAT <i>Used with Standard Weight Capacity</i>	1
1b, 3	003354	Seating System Cross Brace 15" Wide CAT <i>Used with Heavy Duty Option</i>	1
21c, 3	101749	Open Seat Cross Tube 16" Wide CAT <i>Used with Standard Weight Capacity</i>	1
1c, 3	003355	Seating System Cross Brace 16" Wide CAT <i>Used with Heavy Duty Option</i>	1
21d, 3	101750	Open Seat Cross Tube 17" Wide CAT <i>Used with Standard Weight Capacity</i>	1
1d, 3	003356	Seating System Cross Brace 17" Wide CAT <i>Used with Heavy Duty Option</i>	1
21e, 3	101751	Open Seat Cross Tube 18" Wide CAT <i>Used with Standard Weight Capacity</i>	1

Item Number	Part Number	Description	Quantity
1e, 3	003357	Seating System Cross Brace 18" Wide CAT <i>Used with Heavy Duty Option</i>	1
21f, 3	101752	Open Seat Cross Tube 19" Wide CAT <i>Used with Standard Weight Capacity</i>	1
1f, 3	003358	Seating System Cross Brace 19" Wide CAT <i>Used with Heavy Duty Option</i>	1
21g, 3	101753	Open Seat Cross Tube 20" Wide CAT <i>Used with Standard Weight Capacity</i>	1
1g, 3	003359	Seating System Cross Brace 20" Wide CAT <i>Used with Heavy Duty Option</i>	1
21h, 3	101754	Open Seat Cross Tube 21" Wide CAT <i>This round style cross brace is no longer used, effective 6/15/16</i>	1
1h, 3	003360	Seating System Cross Brace 21" Wide CAT	1
21i, 3	101755	Open Seat Cross Tube 22" Wide CAT <i>This round style cross brace is no longer used, effective 6/15/16</i>	1
1i, 3	003361	Seating System Cross Brace 22" Wide CAT	1
3	101162	7/8 OD End Plug BLK	2
4	100660	M6 x 80mm CLS8.8 DIN931 HHCS ZC	2
5	100746	M6 Flat Washer Blk Zn	1
6	100658	M6 Nylock Nut Blk Zn	3
7	100678	M6 x 110 CLS8.8 DIN931 HHCS ZC	1
8	002807	Cross Tube Saddle CAT <i>Used on 21" -22" Wide or Heavy Duty Option</i>	6
9	100880	1/4" Plastic Spacer <i>Not used on 14" wide chairs</i>	2
10	105019	3/16" Plastic Spacer <i>Not used on 14" wide chairs</i>	2
11	100704	M6 x 90 CLS8.8 DIN931 HHCS ZC	2
12	002806	Lower Frame Pivot CAT <i>Used on 21" -22" Wide or Heavy Duty Option</i>	1
4-8, 11, 12	107296	Lower Frame Pivot and Catalyst Oval-Style Cross Brace Hardware Kit 14" Wide (Pair) <i>Used on 14" Wide with Heavy Duty Option</i>	1

Item Number	Part Number	Description	Quantity
4-12	502177	Lower Frame Pivot and Catalyst Oval-Style Cross Brace Hardware Kit (Pair) <i>Used on 21" -22" Wide or Heavy Duty Option</i>	1
17	100734	M5 x 16 PHMS ZC	2
18a	200233	Seat Strap Open Frame 14" Wide CAT	1
18b	200234	Seat Strap Open Frame 15" Wide CAT	1
18c	200235	Seat Strap Open Frame 16" Wide CAT	1
18d	200236	Seat Strap Open Frame 17" Wide CAT	1
18e	200237	Seat Strap Open Frame 18" Wide CAT	1
18f	200238	Seat Strap Open Frame 19" / 21" Wide CAT	1
18g	200239	Seat Strap Open Frame 20"/22" Wide CAT	1
19	000054	Saddle 7/8" <i>Used on 14" - 20" Wide and Standard Weight Capacity</i>	4
20	000001	Lower Frame Pivot CAT <i>Used on 14" - 20" Wide and Standard Weight Capacity</i>	1