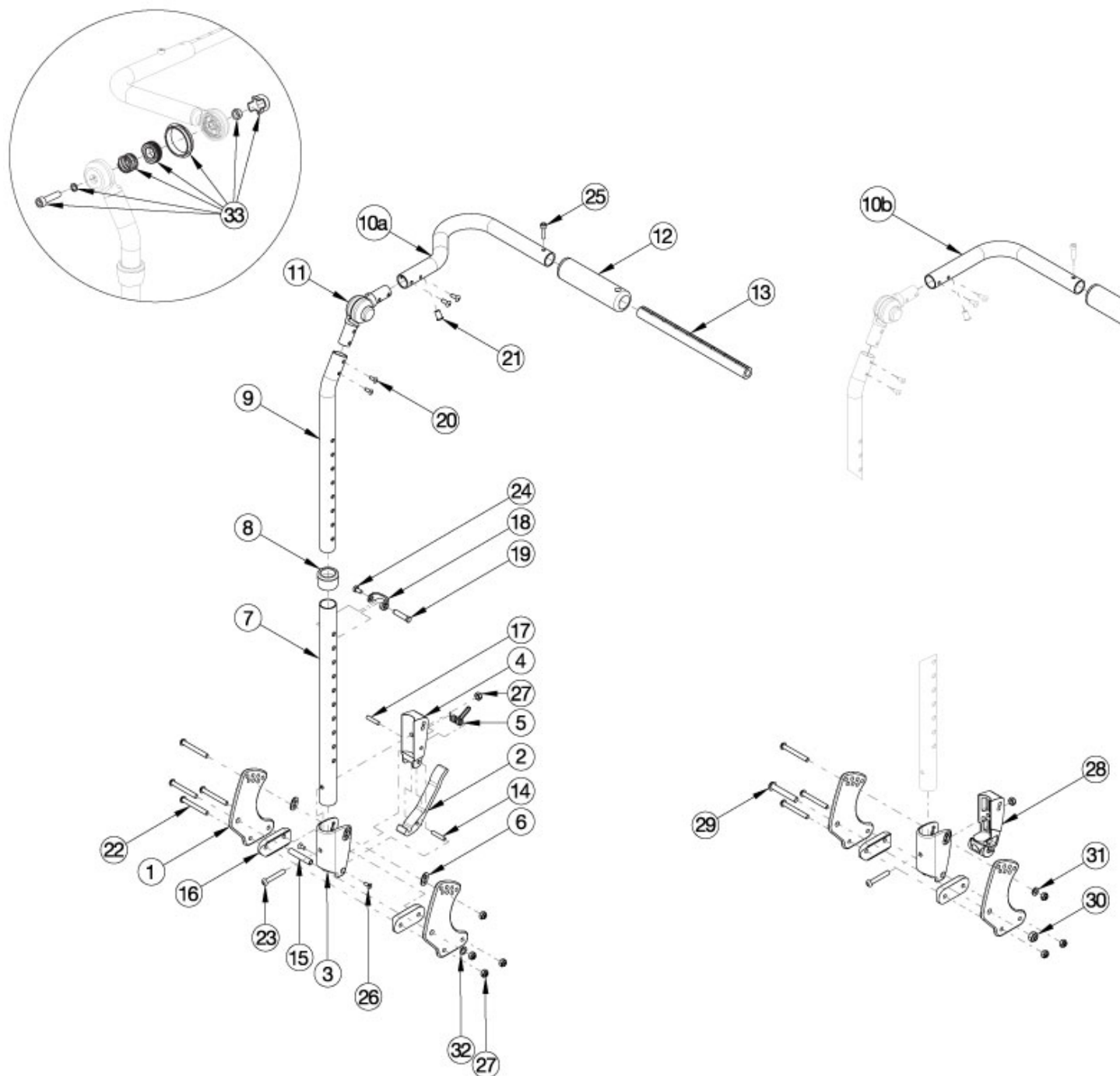


## Flip Adjustable Height with Adjustable Handle Backrest



If chair was invoiced prior to 12/18/23, an upper back tube assembly is required. If chair was invoiced after to 12/18/23, parts 9-11 and 20 shown in the diagram above can now be purchased individually. If chair width is 14"-18" wide and has a serial number of FLP010784 through FLP011079, see the Discontinued Flip Adjustable Height with Adjustable Handle Backrest page. Callout #10a (10"-13" widths) receive the curved handle and callout #10b (14"-18" widths) receive the "L" shaped handle. Note: Tilt Mechanism parts may be required if changing to a different backrest style. Please see the applicable tilt mechanism parts manual page for verification.

Item Number	Part Number	Description	Quantity
1a, 6, 15, 16, 22, 27, 32	502819	Backrest Hardware Kit Std FLIP	1
1a, 1b, 6, 15, 16, 22, 27, 32	502820	Backrest Hardware Kit Std Transit (one side), FLIP	1
1a, 16, 22, 23, 27, 29-31	503027	Backrest Hardware Kit, Non Folding, Flip	1
1a, 1b, 16, 22, 23, 27, 29-31	503163	Backrest Hardware Kit Non-Folding (one side), Transit, Flip	1
2-6, 7a, 8, 14, 15, 17-19, 22 - 24, 26, 27, 32	502663	Back Assembly w/Latch Insert Lower Tube Height Adjustable Short Focus/CR45/Flip	1
2-6, 7b, 8, 14, 15, 17-19, 22 - 24, 26, 27, 32	502664	Back Assembly w/Latch Insert Lower Tube Height Adjustable Tall Focus/CR45/Flip	1
3, 7a, 8, 18, 19, 22 - 24, 27 - 31	502673	Lower Tube w/Latch Insert Height Adjustable Back Short Non-Folding Focus/CR45/Flip	1
3, 7b, 8, 18, 19, 22 - 24, 27 - 31	502674	Lower Tube w/Latch Insert Height Adjustable Back Tall Non-Folding Focus/CR45/Flip	1
9a, 10a, 11, 12, 20, 21	502813	Upper Back Tube Assembly, Height Adj, 10-13W, Right FLIP	1
9b, 10b, 11, 12, 20, 21	502814	Upper Back Tube Assembly, Height Adj, 10-13W Left FLIP	1
9a, 10c, 11, 12, 20, 21	502665	Upper Back Tube Assembly Height Adj, Right Focus/Flip <i>Used on 14-18 wide with serial numbers prior to FLP010784 and serial numbers starting with FLP011080</i>	1
9b, 10d, 11, 12, 20, 21	502666	Upper Back Tube Assembly Height Adj, Left Focus/Flip <i>Used on 14-18 wide with serial numbers prior to FLP010784 and serial numbers starting with FLP011080</i>	1
1a	001890	Back Plate, Std	2
1b	001891	Back Plate, Transit	1
2	001893	Latch Lever, Backrest	1
3, 6	503834	Cover Plate, Latch Insert Kit	1
4	001895	Latch Insert, Folding Backrest	1
5	001896	Spring, Backrest Latch	1
6	001897	Washer, Dual, PSA	2
8	001083	Bushing Height Adjustable Back Tilt	1
9a	002597	Tube, Upper Ht Adj Back R	1
9b	002598	Tube, Upper Ht Adj Back L <i>Used on chairs invoiced after 12/18/23</i>	1
10a	002006	Push Handle, Ped, R <i>Used on chairs invoiced after 12/18/23</i>	1

Item Number	Part Number	Description	Quantity
10b	002007	Push Handle, Ped, L <i>Used on chairs invoiced after 12/18/23</i>	1
10c	001088	Tube, Push Handle, Right Tilt <i>Used on chairs invoiced after 12/18/23</i>	1
10d	001089	Tube, Push Handle, Left Tilt <i>Used on chairs invoiced after 12/18/23. Used on 14-18 wide with serial numbers prior to FLP010784 and serial numbers starting with FLP011080</i>	1
11	116066	Locking Hinge Assembly <i>Used on chairs invoiced after 12/18/23. Used on 14-18 wide with serial numbers prior to FLP010784 and serial numbers starting with FLP011080</i>	1
13a	002578	Growth Strut, Stroller, Short	1
13a, 25	503107	Growth Strut Assembly Short, Focus/Flip	1
13b, 25	503108	Growth Strut Assembly Long, Flip/Focus	1
13b	002579	Growth Strut, Stroller, Long <i>Used only if growing chair from 13" wide or less to 14" wide or greater</i>	1
14	002513	Threaded Barrel, 5mm OD x M4	1
15	002738	Spacer .313 OD x .243 ID x 1.68 long	1
16	002595	Saddle, Dual, 1" OD X 1.5 SP	2
17	102694	Dowel Pin, M5 X 24, Blk Zn	1
18	000988	Fastener Retainer	1
19	000987	Threaded Fastener	1
20	100669	M5 x 10 BTN SHCS BLKZC w/Patch <i>Used on chairs invoiced after 12/18/23</i>	4
22	101781	M6 x 50mm Partial Thread BHCS Blk ZC	4
23	100797	M6 x 40 BHCS BLK ZC	1
24	200427	M5 x 10 CLS8.8 HHCS ZC w/Patch DIN933	1
25	101843	M5 x 20 SHCS Blk Zn	1
26	101818	M4 x 10 FHCS BLKZC w/Patch	2
27	100658	M6 Nylock Nut Blk Zn	5
28	002035	Insert, Backrest, Non-Folding	1
29	101815	M8 x 50 BHCS Blk Zn	1

Item Number	Part Number	Description	Quantity
30	100659	M8 Nylock Nut Blk Zn	1
31	100746	M6 Flat Washer Blk Zn	1
32	101861	Nylon Washer 5/16 x 1/2 x .03	1
33	110524	Locking Hinge Button Assembly with Instruction <i>This kit contains the contents inside callout # 11. This assembly may not be compatible if chair was invoiced prior to 6/22/16</i>	1