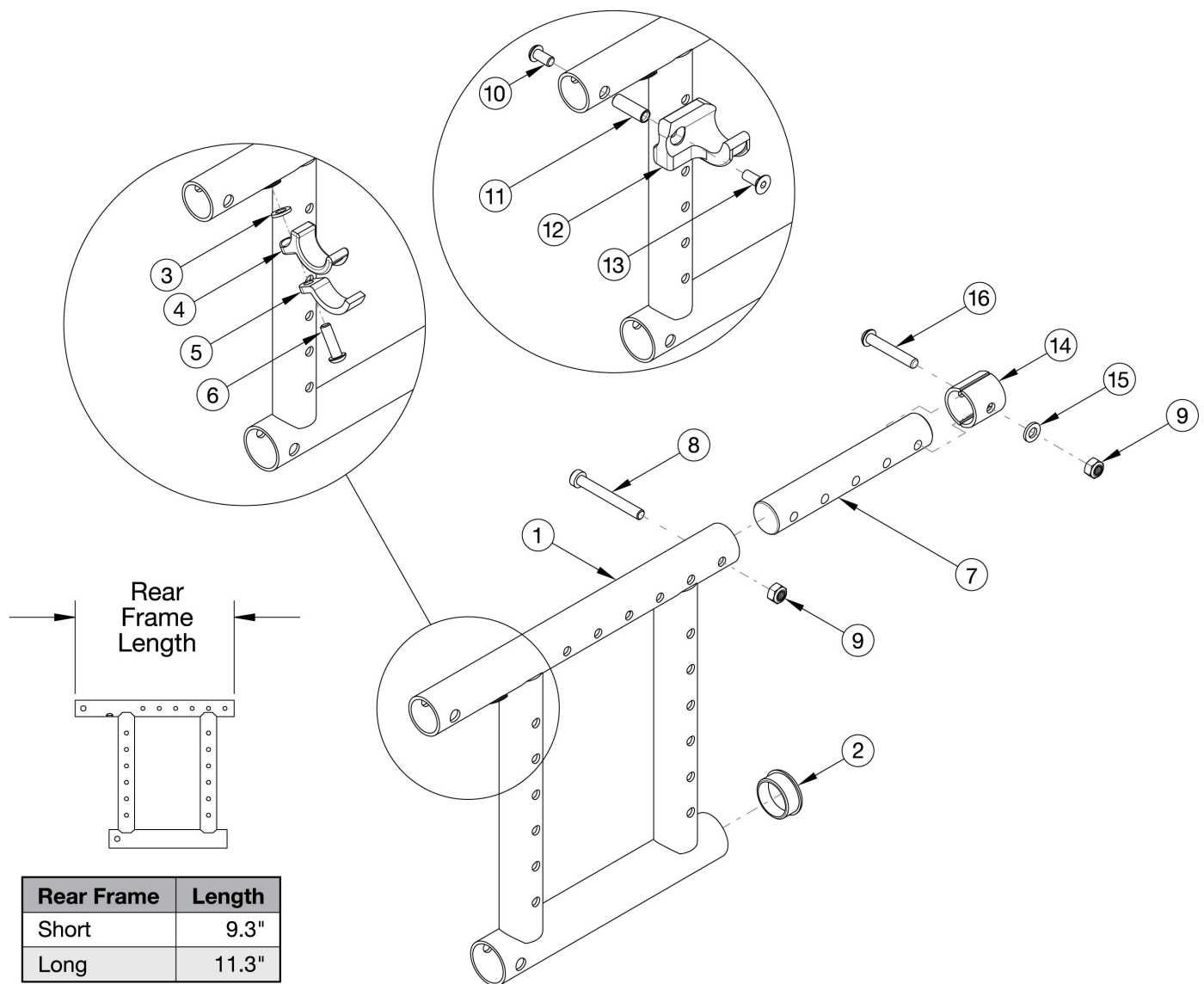


Catalyst 5 Depth Adjustable Rear Frame



Use short frame for 14-17" Seat Depths. Use long frame for 18-20" Seat Depths. If changing to a new seat depth, new Height Adjustable T-Arms may be required. If retrofitting Rear Frame, Depth Adjustable Extension with Hardware needed.

Item Number	Part Number	Description	Quantity
3, 4, 5, 6a	501005	Seat Hook and Support Hardware Kit, Standard, Catalyst <i>Used with Standard Weight Capacity. This kit contains quantity of 1 each. Used with Aluminum and Titanium Cross Braces</i>	1
3, 4, 5, 6b	114528	Seat Hook and Support Hardware Kit, Standard, for Heavy Duty Catalyst <i>Used with Heavy Duty / 350 lbs Weight Capacity. This kit contains quantity 1 each</i>	1
10, 11, 12a, 13	111569	Seat Hook and Support Hardware Kit Seating System Right Front Frame / Left Rear Frame Catalyst	1

Item Number	Part Number	Description	Quantity
		<i>This kit contains quantity of 1 each. Used with Open Seating/Seating System Cross Braces</i>	
10, 11, 12b, 13	111570	Seat Hook and Support Hardware Kit, Seating System Left Front Frame / Right Rear Frame Catalyst <i>This kit contains quantity of 1 each. Used with Open Seating/Seating System Cross Braces</i>	1
7, 9, 14, 15, 16	115765	Depth Adjustable Extension with Hardware, Catalyst/Spark	1
1a, 2	101601_ _ _	Frame Assembly, Catalyst Depth Adjustable Rear, Left, Short	1
1c, 2	101600_ _ _	Frame Assembly, Catalyst Depth Adjustable Rear, Right, Short	1
1c, 2	123158_ _ _	Frame Assembly, Catalyst Depth Adjustable Rear, Right, Short Not For Transit <i>Please quote when transit is not present.</i>	1
1b, 2	101603_ _ _	Frame Assembly, Catalyst Depth Adjustable Rear, Left, Long	1
1d, 2	101602_ _ _	Frame Assembly, Catalyst Depth Adjustable Rear, Right, Long	1
1d, 2	123159_ _ _	Frame Assembly, Catalyst Depth Adjustable Rear, Right, Long Not For Transit <i>Please quote when transit is not present.</i>	1
2	100532	Tube End Plug 1 1/8"	1
3	100831	1/2" Washer OD .040" Thick <i>Used with Aluminum and Titanium Cross Braces</i>	1
4	000003	Seat Hook, Catalyst <i>Used with Aluminum and Titanium Cross Braces</i>	1
5	000004	Seat Hook Support, Catalyst <i>Used with Aluminum and Titanium Cross Braces</i>	1
6a	100668	M6 x 20 CLS10.9 BTN SHCS ZC w/Patch <i>Used with Standard Weight Capacity and Aluminum or Titanium Cross Braces</i>	1
6b	122970	M6 x 1.0 x 20, CLS 10.9, BLZ, SHCS w/Patch <i>Used with Heavy Duty / 350 lbs Weight Capacity and Aluminum or Titanium Cross Braces</i>	1
7	000605	Depth Adjustable Frame Extension Tube, Catalyst/Spark	1
8	101124	M6 x 50 Low SHCS BLK ZC	1
9	100658	M6 Nylock Nut Blk Zn	1
10	100667	M6 x 12 BTN SHCS BLKZC w/Patch <i>Used with Open Seating/Seating System Cross Braces</i>	1
11	000065	M6 x 23.68 Threaded Barrel <i>Used with Open Seating/Seating System Cross Braces</i>	1
12a	000960R	Seat Hook Open Frame Right Front Frame / Left Rear Frame, Catalyst	1

Item Number	Part Number	Description	Quantity
		<i>Used with Open Seating/Seating System Cross Braces</i>	
12b	000960L	Seat Hook Open Frame Left Front Frame / Right Rear Frame, Catalyst <i>Used with Open Seating/Seating System Cross Braces</i>	1
13	101594	M6 x 14 CLS10.9 DIN7991 FSHCS BLKZC w/Patch <i>Used with Open Seating/Seating System Cross Braces</i>	1
14	114443	Tube Spacer, Black, 1" OD x .083" x .80 LG <i>Used with Stroller Handle Backpost and Height Adjustable Straight with Push Handle Backpost designs released February 8th, 2021</i>	2
15	100746	M6 Flat Washer Blk Zn <i>Used with Stroller Handle Backpost and Height Adjustable Straight with Push Handle Backpost designs released February 8th, 2021</i>	1
16	101811	M6 x 35 BHCS Blk Zn <i>Used with Stroller Handle Backpost and Height Adjustable Straight with Push Handle Backpost designs released February 8th, 2021</i>	1

Matte Finish	
Code	Color Name
CGM	Charcoal Gray
EGM	Emerald Green
GGM	Graphite Gray*
IBM	Iridescent Burgundy
INM	Iridescent Navy
AGM	Military Green**
RRM	Retro Red
RBM	Royal Blue
SBM	Shadow Black
SWM	Smooth White

* Discontinued Color

** Formerly called Army Green

Gloss Finish	
Code	Color Name
BLK	Black
BLU	Blue
SKY	Blue Skies
BRO	Bright Orange*
PNK	Bubblegum Pink
BUR	Burgundy*
CBL	Candy Blue
PUR	Candy Purple
RED	Candy Red
COP	Copper
DPR	Deep Purple*
EBL	Electric Blue*
GRN	Forest Green*
FUS	Fuchsia*
GSM	Granny Smith
MTF	Metallic Fuchsia*
MOR	Metallic Orange
ORG	Orange*
SAP	Sapphire*
SIL	Silver
TEA	Teal
YLW	Yellow
FLM	Graphic Image Transfer