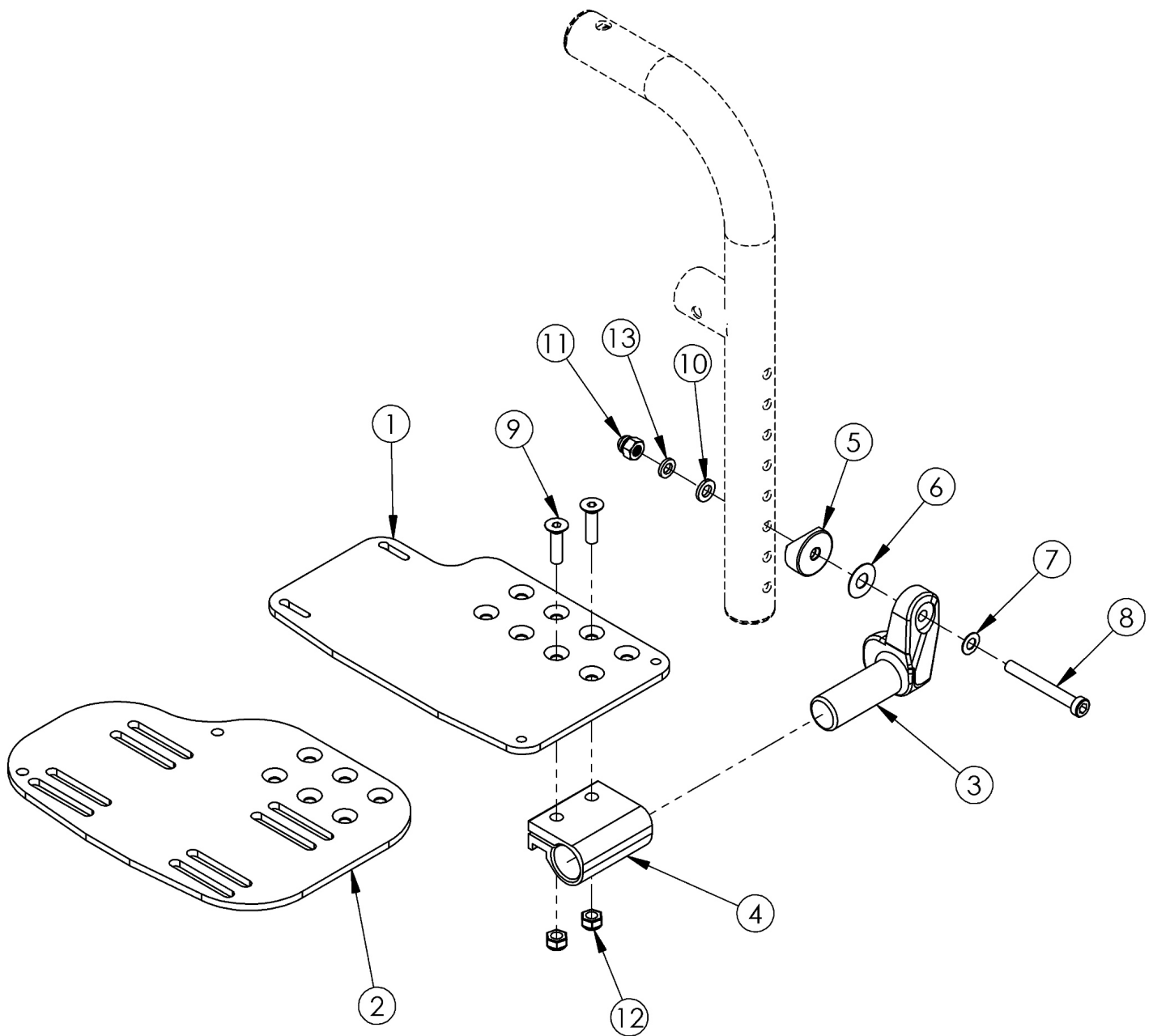


Angle Adjustable Footplate - Front Mount



Sizes for footplates/assemblies are based on seat width with straight frame; if Tilt chair has Offset Frame, add 2" to seat width

Item Number	Part Number	Description	Quantity
3b, 4-13	502214	Footplate Hardware Kit Angle Adjustable for Front Mount Hanger Left	1
3a, 4-13	502215	Footplate Hardware Kit Angle Adjustable for Front Mount Hanger Right	1
3a, 3b, 4-13	502216	Footplate Hardware Kit Angle Adjustable for Front Mount Hanger Pair	1

Item Number	Part Number	Description	Quantity
1a, 3b, 4-13	500610	Footplate Angle Adjustable Front Mount Assembly 10-11 Wide Left	1
1b, 3a, 4-13	500611	Footplate Angle Adjustable Front Mount Assembly 10-11 Wide Right	1
1a, 1b, 3a, 3b, 4-13	500612	Footplate Angle Adjustable Front Mount Assembly 10-11 Wide Pair	1
1c, 3b, 4-13	500607	Footplate Angle Adjustable Front Mount Assembly 12-13 Wide Left	1
1d, 3a, 4-13	500608	Footplate Angle Adjustable Front Mount Assembly 12-13 Wide Right	1
1c 1d, 3a, 3b, 4-13	500609	Footplate Angle Adjustable Front Mount Assembly 12-13 Wide Pair	1
2a, 3b, 4-13	501055	Footplate Angle Adjustable Front Mount Assembly 14-15 Wide Left	1
2b, 3a, 4-13	501056	Footplate Angle Adjustable Front Mount Assembly 14-15 Wide Right	1
2a, 2b, 3a, 3b, 4-13	501057	Footplate Angle Adjustable Front Mount Assembly 14-15 Wide Pair	1
2c, 3b, 4-13	501058	Footplate Angle Adjustable Front Mount Assembly 16-17 Wide Left	1
2d, 3a, 4-13	501059	Footplate Angle Adjustable Front Mount Assembly 16-17 Wide Right	1
2c, 2d, 3a, 3b, 4-13	501060	Footplate Angle Adjustable Front Mount Assembly 16-17 Wide Pair	1
2e, 3b, 4-13	501061	Footplate Angle Adjustable Front Mount Assembly 18-24 Wide Left	1
2f, 3a, 4-13	501062	Footplate Angle Adjustable Front Mount Assembly 18-24 Wide Right	1
2e, 2f, 3a, 3b, 4-13	501063	Footplate Angle Adjustable Front Mount Assembly 18-24 Wide Pair	1
2a, 3b, 4-13	502205	Footplate Kit Angle Adjustable w/ Heel Loop for Front Mount Hanger 14-15 Wide Left <i>Heel Loop with attaching hardware is included but not pictured</i>	1
2b, 3a, 4-13	502206	Footplate Kit Angle Adjustable w/ Heel Loop for Front Mount Hanger 14-15 Wide Right <i>Heel Loop with attaching hardware is included but not pictured</i>	1
2a, 2b, 3a, 3b, 4-13	502207	Footplate Kit Angle Adjustable w/ Heel Loop for Front Mount Hanger 14-15 Wide Pair <i>Heel Loop with attaching hardware is included but not pictured</i>	1
2c, 3b, 4-13	502208	Footplate Kit Angle Adjustable w/ Heel Loop for Front Mount Hanger 16-17 Wide Left <i>Heel Loop with attaching hardware is included but not pictured</i>	1
2d, 3a, 4-13	502209	Footplate Kit Angle Adjustable w/ Heel Loop for Front Mount Hanger 16-17 Wide Right <i>Heel Loop with attaching hardware is included but not pictured</i>	1
2c, 2d, 3a, 3b, 4-13	502210	Footplate Kit Angle Adjustable w/ Heel Loop for Front Mount Hanger 16-17 Wide Pair <i>Heel Loop with attaching hardware is included but not pictured</i>	1
2e, 3b, 4-13	502211	Footplate Kit Angle Adjustable w/ Heel Loop for Front Mount Hanger 18-24 Wide Left	1

Item Number	Part Number	Description	Quantity
		<i>Heel Loop with attaching hardware is included but not pictured</i>	
2f, 3a, 4-13	502212	Footplate Kit Angle Adjustable w/ Heel Loop for Front Mount Hanger 18-24 Wide Right <i>Heel Loop with attaching hardware is included but not pictured</i>	1
2e, 2f, 3a, 3b, 4-13	502213	Footplate Kit Angle Adjustable w/ Heel Loop for Front Mount Hanger 18-24 Wide Pair <i>Heel Loop with attaching hardware is included but not pictured</i>	1
1a	001304	Footplate Angle Adjustable 10-11" Wide CAT/TILT Left	1
1b	001305	Footplate Angle Adjustable 10-11" Wide CAT/TILT Right	1
1c	001306	Footplate Angle Adjustable 12-13" Wide CAT/TILT Left	1
1d	001307	Footplate Angle Adjustable 12-13" Wide CAT/TILT Right	1
2a	000105	Footplate Angle Adjustable 14-15" Wide CAT/TILT Left (Std ELR Right)	1
2b	000106	Footplate Angle Adjustable 14-15" Wide CAT/TILT Right (Std ELR Left)	1
2c	000107	Footplate Angle Adjustable 16-17" Wide CAT/TILT Left (Std ELR Right)	1
2d	000108	Footplate Angle Adjustable 16-17" Wide CAT/TILT Right (Std ELR Left)	1
2e	000109	Footplate Angle Adjustable 18-24" Wide CAT/TILT Left (Std ELR Right)	1
2f	000110	Footplate Angle Adjustable 18-24" Wide CAT/TILT Right (Std ELR Left)	1
3a	000048	Footplate Angle Adj Casting 1" Right	1
3b	000050	Footplate Angle Adj Casting 1" Left	1
4	100502	Angle Adj Footplate Clamp 2"	1
5	000055	Saddle 1"	1
6	000428	Wear Washer	1
7	101455	M6 Belleville Washer (.252 x .551 x .050)	1
8	101124	M6 x 50 Low SHCS BLK ZC	1
9	100662	M6 x 25 FSHCS BLK ZC	2
10	100746	M6 Flat Washer Blk Zn	1
11	100558	M6 Nyl Ins Domed Cap L/N Zc	1
12	100658	M6 Nylock Nut Blk Zn	2
13	102072	Washer Nylon .234 ID x .406 OD x .062 Thick	1