



ZIPPIE FAMILY

When you think of Zippie, imagine all the activities children can enjoy. Each Zippie product is designed to be a simple-to-use and reliable support for the lifestyles of children. Zippie's superior designs increase functional mobility to keep children going, and our uncompromising quality ensures we never let them down.



For information on the Kid Kart® Xpress, and Mighty Lite, please consult the Kid Kart Family Brochure.



Table of Contents:

Zippie Voyage	3
Zippie X'CAPE	4
Zippie ZONE	5
Zippie 2	6
Zippie GS	7
Zippie TS	8
Zippie IRIS	9
Zippie ZM-310	10
Zippie Colors	11
Zippie Product Specifications	12
Armrest & Footplate Options	14
Backpost & Footrest Hanger Options	15
Built-4-Me Customizations	16
JAY® Zip Cushion & Back	16



Product Exclusive Symbol

The butterfly symbol indicates a special feature, exclusive only to that model of Zippie wheelchair!

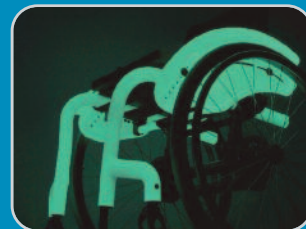
Ability to GROW

All Zippie models include the ability to grow. Multiple features and options provide the right fit, and common components allow for less inventory and easier adjustments for changing needs. Some models offer a one-time free growth kit through the True Fit Program.



Largest Variety of OPTIONS

Every Zippie model can meet a child's mobility needs. Options such as one-arm drive, hub locks, multiple armrests and seating choices provide the right clinical solution. Kid-approved accessories and color choices, such as Glow in the Dark, allow each child's personality to shine bright!



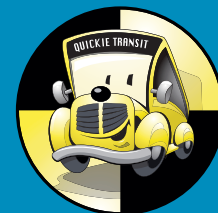
Compatibility ASSURANCE

Adding JAY® standard or custom configured seating to Zippie wheelchairs ensures product compatibility and helps mobility systems to be delivered to their new homes without complications.



TRANSIT Option

Kids deserve mobility that doesn't compromise safety. That's why all Zippie wheelchairs with the transit option are tested for use in a motor vehicle.



Voyage Moderate Seating (shown right)

Designed for children with mild to moderate positioning needs. Offers soft, adjustable components and polka dot upholstery.



Voyage Advanced Seating (shown above)

Designed for children with moderate to advanced positioning needs. Offers an extensive selection of seat options and adjustable components, with black stretch upholstery and colored piping.



QUICK FOLDING,
LIGHTWEIGHT,
STROLLER FRAME
WITH INCREDIBLY
VERSATILE SEATING
AND POSITIONING,
GIVING MORE OPTIONS
TO SUPPORT GROWING
BABIES AND THEIR
CAREGIVERS

ZIPPIE VOYAGE



Voyage Base

- One-step quick-fold technology
- Angle adjustable stroller handle
- Airless wheels
- Swivel front wheels that lock-out for long-distance strolling
- Transit tie-downs



Versatile Seating for Babies on-the-Grow!

The Voyage features a 35° tilt range and optional recline for superior positioning. The reversible seat can face forward so the child can explore their surroundings, or rearward for maximum bonding time. Multiple head, hip, thigh, and trunk support options create a customized fit that adjusts to accommodate rapid growth.

Slide-N-Lock®
Quickly and comfortably attach and remove the seat from the stroller in one simple motion.

Functional Accessories

- Cup Holder
- Accessory Hook
- Folding Booster Base or JCM Hi-Lo Base
- Grab Bar
- Vent Tray, O₂ Holder, or IV Pole
- Front Mount Utility Platform or Rear Accessory Platform



CONVENIENCE
OF A FOLDING
WHEELCHAIR
WITH THE
PERFORMANCE
OF A RIGID
FRAME
THANKS TO
XLOCK™
TECHNOLOGY

ZIPPIE X'CAPE



Z-finity® System

The Z-finity System's footplate can be adjusted between 0.5" above the seat pan to 21" below the seat pan to provide proper support as children grow. Its rotating hardware allows infinite adjustment along its rotational arc, achieving multiple angles and placement options for positioning the feet, ankles, and knees.



XLOCK™ Technology

Patented locking crossbrace reduces frame play for greater efficiency and less fatigue. XLOCK features one-step push-to-lock and pull-to-fold functions.



VersaRail™ Seat Rail

VersaRail offers shared placement of components and accessories, such as seating, armrests, wheel locks, side guards, etc.

Special Features

27 frame colors and 24 crossbrace colors create over 600 combinations!

2" of width growth and 3" of depth growth built into frame

Option of Swing-in/Swing-out Hangers or Fixed Front Frame

Folding Push Handle tucks away or raises to the caregiver's height



DESIGNED
FOR ACTIVE
CHILDREN,
THE ZIPPIE ZONE
RIGID
WHEELCHAIR IS OUR
LIGHTEST
ZIPPIE YET!

ZIPPIE ZONE



Our Lightest Pediatric Wheelchair Ever!

Using 7000 series aerospace aluminum and ShapeLoc technology, the Zippie Zone is incredibly strong and weighs as little as 14 lbs!



Built-in Growth

3" of frame depth adjustment and 2" of seat sling depth adjustment. Frame width growth is as simple as replacing 4 tubes!



Child-specific Frame

Flared or inset frame and inset backrest fit small children and provide better access to the wheels.

Special Features

Flip-up, angle-adjustable footrest for easy transfers

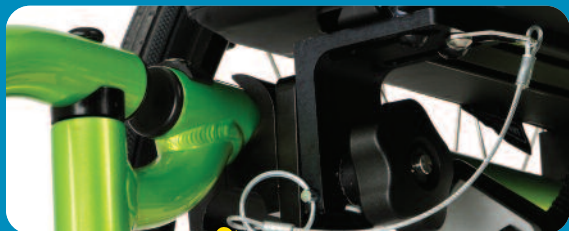
Push-button hub lock located on seat rail stays out of the way during propulsion

Dynamic Center Rear Caster for greater maneuverability and rearward stability



THE ZIPPIE 2
FOLDING
WHEELCHAIR IS
AVAILABLE WITH
A WIDE VARIETY
OF OPTIONS
AND ALLOWS FOR
STORAGE IN
TIGHT SPACES.

ZIPPIE 2



Open Seat Frame

By eliminating the upper seat rails, seating systems attach directly to the Zippie 2's frame. This reduces weight and makes way for lower seat heights so children can access low tables and desks.



Ability to Grow

The Zippie 2's components are interchangeable and highly adjustable, allowing the chair to grow and adapt with the child.

Folding Frame

The Zippie 2's folding frame is easy to transport and store in tight spaces. It features a locking crossbrace for an easy-to-push, rigid feel.



THE ZIPPIE GS
IS AVAILABLE WITH
FOLDING OR
RIGID FRAMES
AND STANDARD
OR REVERSE WHEEL
CONFIGURATIONS.

ZIPPIE GS



Reverse Wheel Configuration

To allow children of all sizes to reach the wheels for maximum independence, the GS's main wheels can be placed in standard (rear of the frame) or reverse (front of the frame) configuration. The axle plate may be adjusted vertically and horizontally to allow for additional growth.



Built-in Growth System

The GS easily grows as the child grows. The frame and versatile growing seat pan allow for up to 2" of width growth and up to 4" of depth growth!

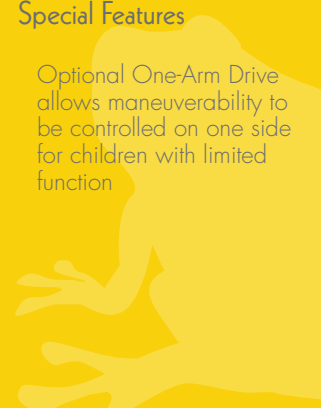


Folding or Rigid Frame

Choose the folding frame option for easy transport and storage in tight spaces. Choose the rigid frame option for greater propulsion efficiency.

Special Features

Optional One-Arm Drive allows maneuverability to be controlled on one side for children with limited function





CANOPY (Sun Shade)

With the optional Canopy, keep protected from the elements. The mesh window maintains caregivers visibility and the integrated pockets allow for quick access to essentials.



THE ZIPPIE TS
TILT-IN-SPACE
WHEELCHAIR IS
AVAILABLE WITH
THE WIDEST VARIETY
OF OPTIONS
AND AN OPTIONAL
FOLDING FRAME
FOR EASY STORAGE.

ZIPPIE TS



45° of Tilt-in-Space Technology

For excellent positioning, the TS offers 45° of tilt technology. The **Foot Release Tilt Actuator** is easy to operate and prevents tangles caused by exposed cables.



Ability to Grow

With up to 2" of width adjustments and up to 5" of depth adjustments, the TS is able to accommodate the child's growth.



Folding and Rigid Frame Options

The TS is available with a rigid frame for efficiency during propulsion or with a folding frame for easy transport and storage in tight spaces.

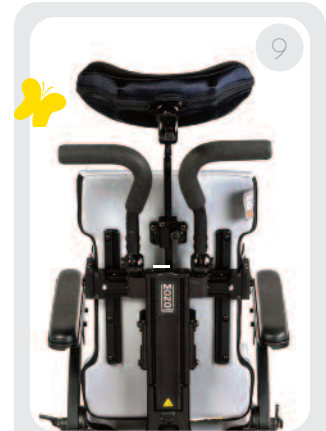
Z-finity® System Footplate

Rotating hardware allows infinite adjustment along its rotational arc, achieving multiple angles and placement options.

The Zippie IRIS comes in either a RIGID or a FOLDING frame!



ZIPPIE IRIS



MONO Backrest System™

The optional MONO Backrest System allows for independent selection of the backrest width and chair width, eliminates interference between backrest hardware and laterals, offers up to 2" of midline backrest offset, and features 35° of angle adjustment. The dynamic function allows for controlled movement of the backrest.



55° of Rotation-in-Space Technology

For superior positioning, the shortest possible wheelbase, and a smooth tilting motion.



XLOCK® Folding Cross-brace (optional)

Folds compact for convenient transport and locks when unfolded for superior rigidity.



ELR / ALR

The Elevating/Articulating legrest design offers ergonomic positioning.



Foot Release

Eliminate exposed cables by selecting the easy-to-operate Foot Release Tilt Actuator.

Special Features

Z-finity® System Footplate

Rocker Arm Cover (rigid only)

Swing-In/Swing-Out hangers for intuitive release and a secure lock over time

Dynamic Back

Optional width-adjustable strut tubes



OUR SMALLEST
POWER
 WHEELCHAIR BASE WITH
 CLINICALLY **PROVEN**
PEDIATRIC
SEATING FOR
 MAXIMUM
 ACCESSIBILITY AND
INDEPENDENCE..

ZIPPIE ZM-310



Compact Base with High Performance Motors

The ZM-310 is 24" wide and 37" long with a 21" turning radius for maneuvering through tight indoor spaces. 1.3" drive wheels climb obstacles and glide over terrain while keeping the child secure. Reliable 4-pole, 6mph motors keep up with children's most playful and energetic days.



Power Seat Elevate

9" or 12" of Power Seat Elevate assists with accessing tall shelves or light switches and interacting with peers at eye level.



Manual Tilt and Recline

50° of Manual Tilt and/or 40° of Manual Recline allow the caregiver to change the child's position or posture to assist with feeding, digestion, respiratory function, and visual orientation.

Special Features

Optional 50° of Power Tilt

PG Drives expandable and non-expandable electronics

Optional Specialty Input Devices for independent mobility

Angle Adjustable Centermount Footrest with 3" to 13" lengths

COLORS

NOTES: Print processes cannot accurately represent paint finishes. Actual colors may vary. Colors and patterns may vary based on type of chair or frame material. Not all colors available on all products. Please see product order form for specific color options.

11



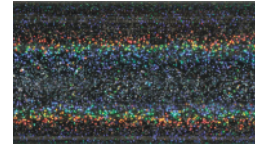
Aztec Gold



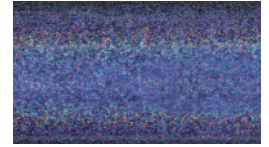
Black Black



Cherry Black



Opal



Blue Opal



Candy Blue



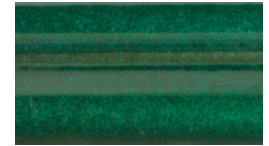
Candy Purple



Candy Red



Electric Blue



Evergreen



Glow



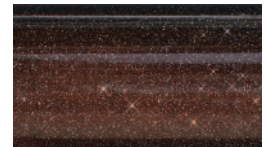
Green Apple



Hot Sparkle Pink



Mauve Pink



Rootbeer



Sparkle Silver



Sunrise Orange



Yellow



Titanium Color Paint



Matte Black



Matte Black Cherry



Matte Purple



Matte Electric Blue



Matte Evergreen



Desert Camo



Mossy Oak Camo



Stars and Stripes



Zebra
(Shown on Candy Blue)



ANODIZED PARTS

Refer to product order form for anodized part options.



Specifications are subject to change without notice.

ZIPPIE MATRIX

	ZIPPIE X'CAPE	ZIPPIE 2	ZIPPIE GS / GS SE	ZIPPIE ZONE
FRAME TYPE	FOLDING	FOLDING	FOLDING or RIGID	RIGID
HCPCS CODE	E1238	E1238	Rigid: E1237 Folding: E1238	E1235, E1237
Transit Option	Yes ¹	Yes	Yes	Yes
Tilt Range	_____	_____	_____	_____
Chair Weight*	19 lbs. w/o footrests	25 lbs. w/o footrests	Rigid: 25 lbs. w/o footrest Folding: 29 lbs. w/o footrests	14 lbs.
Weight Capacity ^{w/o seating}	165 lbs.	165 lbs.	165 lbs.	165 lbs.
Overall Width*	15" to 26.5"	19" to 25"	17" to 27"	15" to 25"
Seat Width	8" to 16" (grows to 18")	12" to 16"	10" to 18"	8" to 16"
Seat Depth	8" to 18" (grows to 20")	12" to 18"	10" to 20"	8" to 18"
Back Angle Adjustment	Fore (-) 8° to Aft (+) 24°	Fore (-) 5° to Aft (+) 30°	Fore (-) 5° to Aft (+) 30°	Fore (-) 17° to Aft (+) 8°
Front Seat-To-Floor Height	13" to 18"	15" to 21.5"	14" to 20"	14" to 19"
Rear Seat-To-Floor Height	11" to 18"	13.5" to 19"	12.5" to 20"	13" to 19"
Footrest / Frame Angle	80° Swing-In/Out, 80° Fixed Front, Z-finity System: Adjustable ELR: 0° to 90°	Swing-In/Out: 60°, 70°, 80°, 90° HD Lift Off: 70°, 80°, 90° ELR, ALR: 0° to 90	Swing-In/Out: 60°, 70°, 80°, 90° HD Lift Off: 70°, 80°, 90° ELR, ALR: 0° to 90	80°
Back Type	Fixed Height, Height Adjustable, Dynamic	Fixed Height and Height Adjustable	Fixed Height and Height Adjustable	Folding Angle Adjustable Double Lock-Down
Back Height	Fixed Height: 16", 20", 23" Ht Adjustable: 11" to 24", 12" to 24, Dynamic: 12" to 24	Fixed Height: 19", 22", 25" Ht Adjustable: 17 to 23", 20 to 26"	Fixed Height: 19", 22", 25" Ht Adjustable: Rigid: 16 to 22", 19 to 25" Folding: 17 to 23", 20 to 26"	6" to 8" through 15" to 18"
Center of Gravity Adjust.	3"	3.12"	3"	2.5"
Rear Wheel Sizes	12", 16", 20", 22", 24"	12", 16", 20", 22", 24"	12", 16", 18", 20", 22", 24"	18", 20", 22", 24"
Caster Sizes	3", 4", 5", 6"	3", 4", 5", 6", 8"	3", 4", 5", 6", 8"	3", 4", 5", 6"
True Fit or One-Time Free Growth Kit	Yes	Yes	GS: Yes GS SE: No	No ²
Warranty ^{Refer to Owner's Manual for details}	Frame: Lifetime Parts: 1 Year	Frame: Lifetime Parts: 1 Year	Frame: Lifetime Parts: 1 Year	Frame: Lifetime Parts: 1 Year

* Actual measurements may vary according to the chair configuration and accessories.

** Without footrests and rear wheels.

1. Conforms with ANSI/RESNA WC-19 standards. Please refer to QUICKIE® & ZIPPIE® WC-19 Transit Securement Supplement (MK-100072) for additional information. Supplement is available for download at www.sunrisemedical.com.

ZIPPIE TS / TS SE	ZIPPIE IRIS	ZIPPIE VOYAGE
TILT-IN-SPACE Folding or Rigid	TILT-IN-SPACE Folding or Rigid	EARLY INTERVENTION Stroller
Rigid: E1233 Folding: E1234	Rigid: E1233 Folding: E1234	E1232 without seating: E1234
Yes	Yes ¹	Yes
45°	40°: -5 to 35°, 0 to 40°, +5 to 45° 55°: -5 to 50°, 0 to 55°, +5 to 60°	35°: -5° to 30°
29 lbs. w/o footrests	Rigid: 22.8 lbs.** Folding: 26.6 lbs.**	28 lbs.
165 lbs.	225 lbs. ◇	75 lbs.
17" to 26"	17.5" to 25.5"	24"
10" to 18"	Rigid: 10" to 18" Folding: 10" to 16" (grows to 18")	Adv.: 6" to 13" Mod.: 9.5" to 12"
13" to 20"	10" to 18"	Adv.: 5" to 13" Mod.: 8" to 13"
Fore (-) 5° to Aft (+) 30°	Fore (-) 5° to Aft (+) 30°	Adv.:85° to 140° Mod.: 90° to 180°
15.5" to 20"	13" to 19" w/drop seat: 11" to 17.5"	_____
14" to 19"	13" to 19" w/drop seat: 11" to 17.5"	_____
Swing-In/Out: 60°, 70°, 80°, 90° HD Lift Off: 60°, 70°, 80° ELR, ALR: 0° to 90	Swing-In/Out: 60°, 70°, 80°, 90° HD Lift Off: 70°, 80°, 90° ELR, ALR: 0° to 90. Contracture, Z-finity System: Adjustable	0° to 90°
Fixed Height and Height Adjustable	Fixed Height, Height Adjustable, Reclining, Dynamic, MONO Backrest System®	Height Adjustable, Reclining
Fixed Height: 19", 22", 25" Ht Adjustable: Rigid: 16 to 22", 19 to 25" Folding: 17 to 23", 20 to 26"	Fixed Height: 19", 22", 25" Ht Adjustable: 16 to 22", 19 to 25" Reclining: 21", 24" MONO: 18.7", 21.7"	Adv.: Short: 7" to 13" Adv.: Tall: 10" to 17" Mod.: 16" to 24" (includes head support)
None	6"	_____
12", 16", 18", 20", 22", 24"	12", 16", 20", 22", 24"	12"
3", 4", 5", 6", 8"	4", 5", 6", 8"	7"
TS: Yes TS SE: No	IRIS: Yes IRIS SE: No	No
Frame: Lifetime Parts: 1 Year	Frame: Lifetime Parts: 1 Year	Frame: Lifetime Parts: 1 Year

2. Includes 3" of built-in frame depth growth and 2" of built-in seat sling depth growth.

◇ WARNING: Addition of the Z-Finity Footrest System to this device limits the maximum allowable user weight to 165 lbs. (75 kg)

ZIPPIE ZM-310	
POWER	
HCPCS CODE	ZM-310 BC: K0848 ZM-310 SC: K0856
Transit Tested	Yes ¹
Drive Wheel	Mid
Max Speed	6.0 mph
User Weight Capacity	165 lbs.
Electronics	PG Drives VR2 or R-net
Suspension	6-wheel
Turning Radius	21"
Overall Base Width	24"
Overall Base Length	37" w/o footrests
Drive Wheels	13" w/ flat-free inserts
Seat Selection	ASAP II
Seat Width	10" to 16"
Seat Depth	10" to 19"
Seat-to-Floor Height	15.5" to 22.4"
Tilt	Power or Manual
Recline	Manual
Seat Elevate	9" or 12"
Batteries	Group 22



T-Post

- Standard and tall posts
- Three height settings



Height-Adjustable

- Peds, kids, adult sizes
- Desk and full length



Flip-Up

- Simple flip-back operation
- Multiple height positions



Locking, Flip-Back

- Locking flip-back operation
- Multiple height positions
- Length-adjustable option



T-Post with Sideguard

(available on Zippie X'CAPE)

- Desk and full length classic or foam armpads
- Two height options



Cantilever

(available on Zippie ZM-310)

- 2 height ranges
- Desk and full length
- Waterfall and standard armpad styles
- 2-point locking option



Kids Angle-Adjustable

- Rigid aluminum plate
- Angle-adjustable



Adult Angle-Adjustable

- Oversized slotted aluminum plate
- Angle-adjustable



90° Footboard

- Removable
- Depth adjustable
- Angle adjustable



Aluminum

- Depth adjustable
- For use with elevating legrests



Flip-Up Platform

- Angle-adjustable
- For use with standard swing-aways



Composite

- Standard footplate



Multi-Angle Adjustable

(available on Zippie X'CAPE)

- Compatible with Z-finity™ System
- Depth adjustable
- Angle adjustable

ARMREST AND FOOTPLATE OPTIONS

Other options, not pictured, are also available.



Stroller Handles

21" 23" 25"
LOW MED HIGH



Swing-Away, Adjustable Stroller Handles

- Adjusts in height
- Folds in for storage



Removable Extension

- Comfortable hand positions
- Rigidizes back canes
- Mounts upward or downward



Folding, Adjustable Rigidizer

- Provides stability and adjusts to accommodate seating systems



Height-Adjustable, Angle-Adjustable Push Handle

- 260° of rotation
- User friendly thumb button release



MONO Backrest System™ (available on Zippie IRIS)

- Three heights ranging from 12" to 24"
- 35° of angle adjustment
- Offers numerous positioning capabilities
- Folds down for transport



Z-finity™ System

(available on Zippie X'CAPE)

- Adjusts to achieve wide range of angles
- -0.5" to 21" lower leg length settings
- Available with fixed frame or swing-in/out hangers



Swing In/Out, Front Mount or Extension Tubes

- 90°, 80°, 70° & 60°
- Front Mount: 2" & 4" extensions
- Extension Tubes: 3 lengths
- Heavy duty option



Swing In/Out Extension Tubes

(available on Zippie IRIS & Zippie X'CAPE)

- 80°, 70° & 60° angles
- 3 extension tube lengths



Elevating Legrest

- Kids 90° front mount style
- Adult standard style



Elevating/Articulating Legrest

(available on Zippie IRIS)

- 2" of height adjustment aligns pivot point with knee joint



Angle-Adjustable Centermount Footrest

(available on Zippie ZM-310)

- 3" to 13" lower leg length settings
- Two footplate sizes

BACKPOST AND FOOTREST HANGER OPTIONS

Other options, not pictured, are also available.



Our Built-4-Me Team is dedicated to creating product customizations beyond what is listed on our product order forms. Experts in the engineering and manufacturing of custom rehab products will listen to your specific requests and build a chair as individual as your fingerprint!

Contact Built-4-Me for availability of customizations on your Zippie wheelchair of choice.

Some of the most common Built-4-Me customizations on Zippie wheelchairs include:



Dynamic Back

Allows controlled movement of the backrest to help maintain proper user positioning and reduce wheelchair damage



Custom Vent Tray

Allows a ventilator to be mounted to a wheelchair by mounting a tray to its base



One-Arm Drive

Allows wheelchair propulsion to be controlled on one side for users with limited function



Oxygen Tank Holder

Allows an oxygen tank to be mounted to the back canes of the wheelchair



JAY® Zip Back



One step release

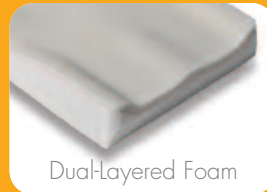
Versatile One Step Release Hardware

- Easy one step release
- Fits on wide range of tubing: 3/4" with inserts, 7/8" with inserts or 1" without inserts
- One-tool adjustments



Back shell color options

JAY® Zip Cushion



Dual-Layered Foam

Comfortable

- Dual-Layered, contoured foam base
- Reticulated foam in the outer cover promotes air movement
- Soft, stretchable outer cover

Convenient. Antimicrobial.



Outer cover

- Silver impregnated X-static® stretch fabric naturally inhibits bacterial growth
- Extra layer of microclimatic spacer fabric for comfort
- Machine washable and quick to dry
- Two outer covers included (cushion only)
- Safe non-toxic material

Inner cover

- Easy to wipe off
- Aquaguard® zipper resists moisture
- Anti-wicking seam thread protects foam base



Cushion cover colors available