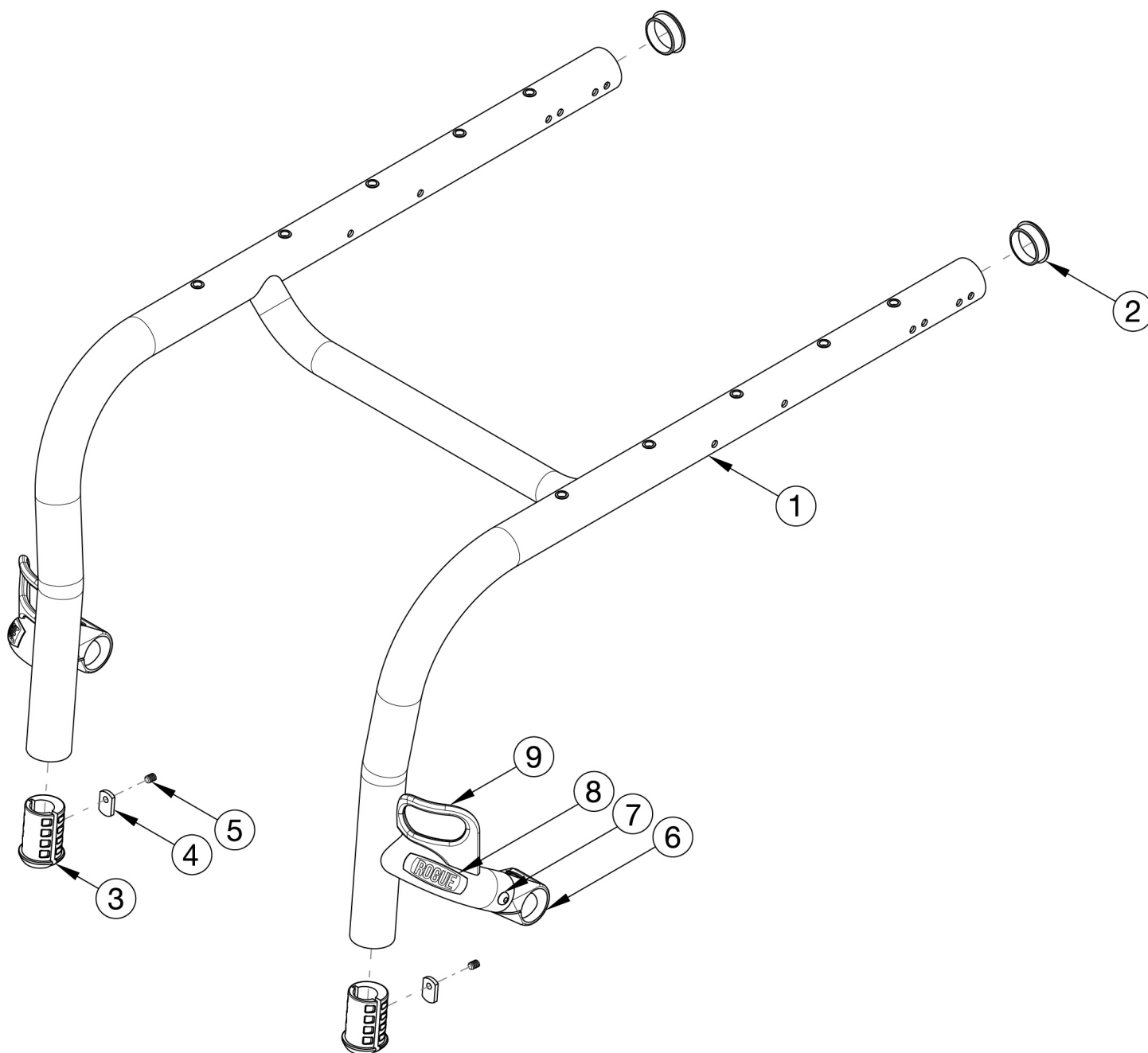


Rogue Rigid Frame



Replacement rigid frames may be quoted, but must be ordered through Customer Service. Serial number required upon order.

<p>This design effective starting with serial number RG008800. <p>

Replacement Rogue Transit Frames will include front transit brackets only. To quote rear transit brackets, please see Rogue Transit page.

Item Number	Part Number	Description	Quantity	Retail
1a, 2-4a, 5, 6a, 7, 8	RFRG	Replacement Rogue Frame	1	\$888.42
1b, 2-4a, 5, 6a, 7, 8, 9	RFRGTRANS	Replacement Rogue Transit Frame	1	\$1,130.16

Item Number	Part Number	Description	Quantity	Retail
1c, 2-4a, 5, 6a, 7, 8	RFRGGIT	Replacement Rogue Frame w/ Graphic Image Transfer	1	\$1,495.32
1d, 2-4a, 5, 6b, 7, 8	RFRGCOL	Replacement Rogue Frame w/ Color Anodized Package	1	\$916.47
1e, 2-4a, 5, 6b, 7, 8, 9	RFRGTRANSCOL	Replacement Rogue Transit Frame w/ Color Anodized Package	1	\$1,158.21
1f, 2-4a, 5, 6b, 7, 8	RFRGGITCOL	Replacement Rogue Frame w/ Graphic Image Transfer and Color Anodized Package	1	\$1,523.37
2	101113	Tube End Plug 1 3/8" <i>Use quantity 4 with high-mounted footrests. Extra plugs are inserted into front of frame.</i>	2	\$3.15
3	001346	Footrest Sleeve 3/4" to 1 3/8" <i>Used only with frame-inserted footrests. Use item 2 for high-mounted footrests.</i>	2	\$6.01
4a	001141	Weld Nut NDM 06028 Zinc <i>Used only with frame-inserted footrests. Use item 2 for high-mounted footrests.</i>	2	\$2.63
4b	102092	M6 Weld Nut Offset <i>Used only as needed with frame-inserted footrests. Use item 2 for high-mounted footrests.</i>	2	\$3.15
5	102090	M6 Set Screw Flat Point <i>Used only with frame-inserted footrests. Use item 2 for high-mounted footrests.</i>	2	\$2.63
8	002473	Aluminum Wing Badge Rogue	2	\$2.68

Color Anodizing Samples

