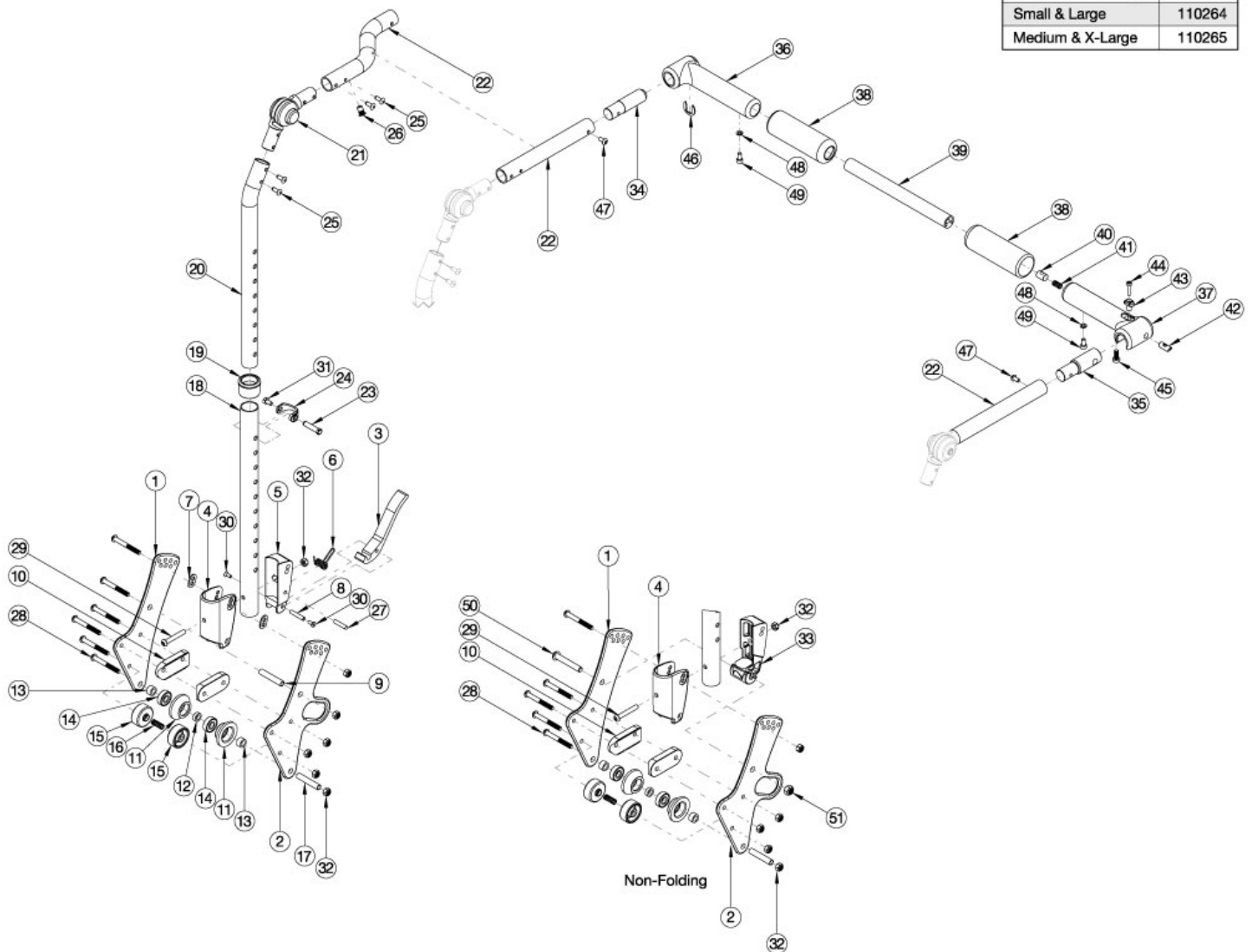


Arc Adjustable Height with Folding Adjustable Handle Backrest

Handle Crosstube (Item 39)	
Chair Width Range	Part No.
Small & Large	110264
Medium & X-Large	110265



If chair was invoiced prior to 12/18/23, an upper back tube assembly is required. If chair was invoiced after to 12/18/23, parts 20-22 and 25 shown in the diagram above can now be purchased individually Callout #22: The curved tube is used with the small and medium width ranges (10"-14") and the straight shaped tube is used with the large and extra large (14"-18") width ranges. When changing backrest types, check to see if new cables and tilt triggers are needed for both foot and hand tilts.

Item Number	Part Number	Description	Quantity
20b, 21, 22b, 25, 26, 47	113608	Height Adjustable Upper Back Tube Assembly, 10-13" Wide, Left, Arc	1
20a, 21, 22a, 25, 26, 47	113609	Height Adjustable Upper Back Tube Assembly, 10-13" Wide, Right, Arc	1
20b, 21, 22d, 25, 26, 47	113610	Height Adjustable Upper Back Tube Assembly, 14-18" Wide, Left, Arc	1

Item Number	Part Number	Description	Quantity
20a, 21, 22c, 25, 26, 47	113611	Height Adjustable Upper Back Tube Assembly, 14-18" Wide, Right, Arc	1
3-8, 18a, 19, 23, 24, 27-32	113612	Height Adjustable Lower Backrest Assembly, Short, Arc	1
3-8, 18b, 19, 23, 24, 27-32	113613	Height Adjustable Lower Backrest Assembly, Tall, Arc	1
4, 18a, 19, 23, 24, 28, 29, 31-33, 50, 51	113614	Height Adjustable Lower Backrest Assembly, Non-Folding, Short, Arc	1
4, 18b, 19, 23, 24, 28, 29, 31-33, 50, 51	113615	Height Adjustable Lower Backrest Assembly, Non-Folding, Tall, Arc	1
1, 7, 9, 10, 28, 32	113616	Height Adjustable Backrest Hardware Kit, Standard, Arc	1
1, 2, 7, 9, 10, 28, 32	113617	Height Adjustable Backrest Hardware Kit, Transit, Arc	1
1, 10, 28, 32, 50, 51	113618	Height Adjustable Backrest Hardware Kit, Standard, Non-Folding, Arc	1
1, 2, 10, 28, 32, 50, 51	113619	Height Adjustable Backrest Hardware Kit, Transit, Non-Folding, Arc	1
34, 36, 38, 46, 48, 49	113600	Rigidizer Handle Pivot Assembly with Adapter with Foam Grip, Arc	1
35, 37, 38, 40-45, 48, 49	113601	Rigidizer Handle Latch Assembly with Adapter with Foam Grip, Arc	1
34-38, 39a, 40-49	113602	Rigidizer Handle Complete Assembly, Small and Large Width Ranges, Arc	1
34-38, 39b, 40-49	113603	Rigidizer Handle Complete Assembly, Medium and X-Large Width Ranges, Arc	1
11-16, 17, 32	113546	Backrest Roller Kit, Arc	1
1	110190	Back Plate, Bearing Guide, Standard	1
2	113181	Transit Back Plate, Standard, Arc	1
3	111409	Lever, Latch, Backrest	1
5	001895	Latch Insert, Folding Backrest	1
6	001896	Spring, Backrest Latch	1
7	001897	Washer, Dual, PSA	2
8	002513	Threaded Barrel, 5mm OD x M4	1
9	002738	Spacer .313 OD x .243 ID x 1.68 long	1
10	002595	Saddle, Dual, 1" OD X 1.5 SP	2
19	001083	Bushing Height Adjustable Back Tilt	1
20a	002597	Tube, Upper Ht Adj Back R <i>Used on chairs starting 12/18/23</i>	1
20b	002598	Tube, Upper Ht Adj Back L	1

Item Number	Part Number	Description	Quantity
		<i>Used on chairs starting 12/18/23</i>	
21	116066	Locking Hinge Assembly <i>Used on chairs starting 12/18/23</i>	1
22a	110251	Push Handle, Angle Adjustable Offset, Right <i>Used on chairs starting 12/18/23</i>	1
22b	110252	Push Handle, Angle Adjustable Offset, Left <i>Used on chairs starting 12/18/23</i>	1
22c	110256	Push Handle, Angle Adjustable, Right <i>Used on chairs starting 12/18/23</i>	1
22d	110257	Push Handle, Angle Adjustable, Left <i>Used on chairs starting 12/18/23</i>	1
23	000987	Threaded Fastener	1
24	000988	Fastener Retainer	1
25	100669	M5 x 10 BTN SHCS BLKZC w/Patch <i>Used on chairs starting 12/18/23</i>	4
27	102694	Dowel Pin, M5 X 24, Blk Zn	1
28	101781	M6 x 50mm Partial Thread BHCS Blk ZC	6
29	100797	M6 x 40 BHCS BLK ZC	1
30	101818	M4 x 10 FHCS BLKZC w/Patch	2
31	200427	M5 x 10 CLS8.8 HHCS ZC w/Patch DIN933	1
32	100658	M6 Nylock Nut Blk Zn	7
33	002035	Insert, Backrest, Non-Folding	1
35	110259	Adapter, Latch, Rigidizer Handle	1
39a	110264	Cross Tube, Rigidizer Handle, 14-16 Wide <i>Used on small and large width ranges</i>	1
39b	110265	Cross Tube, Rigidizer Handle, 16-18 Wide <i>Used on medium and x-large width ranges</i>	1
44	110290	SHCS, M4 x 0.7 x 18, CLS12.9, BLZ, NYL, DIN912	1
45	101185	M6 x 14 CLS8.8 DIN7984 Low SHCS BLKZC	1
46	110291	E-RING, M13-M18, DIN6799, ZC	1
47	100669	M5 x 10 BTN SHCS BLKZC w/Patch	2
48	102614	M5 Split Lock Washer BLK ZC	2

Item Number	Part Number	Description	Quantity
49	101766	M5 X 10 Cls12.9 Din912 Shcs Pln	2
50	101815	M8 x 50 BHCS Blk Zn	1
51	100659	M8 Nylock Nut Blk Zn	1