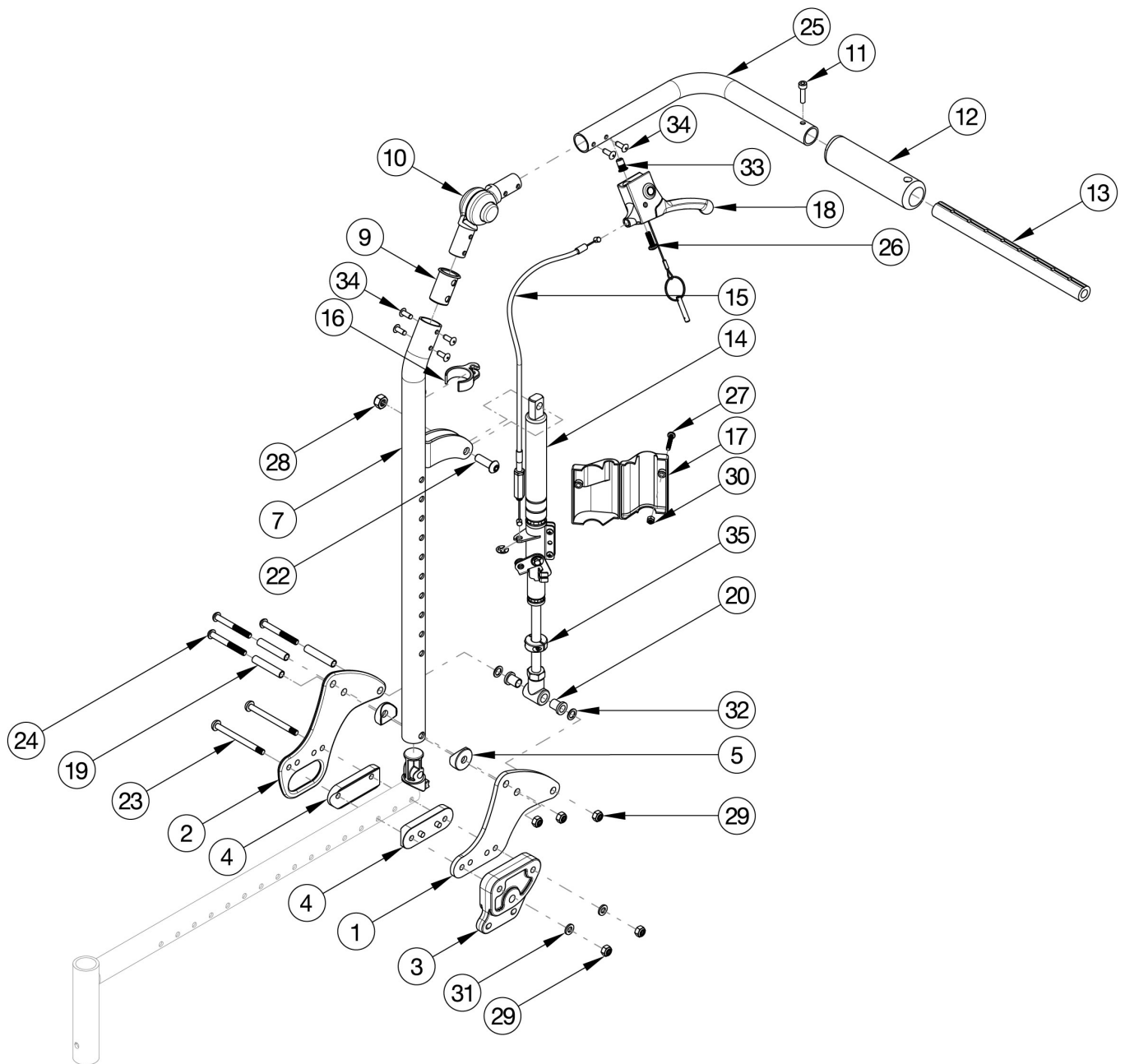


CR45 Reclining Backrest



If chair was invoiced prior to 12/18/23, an upper back tube assembly is required. If chair was invoiced after to 12/18/23, parts 7, 9, 10, 25 and 34 shown in the diagram above can now be purchased individually. If changing from another style backrest and the Hand Tilt is present, a new Hand Tilt Cable / Trigger Kit may be required. If retrofitting, see wheel lock page. When Seat Depth is 21" or 22", the Back Frame Extension is needed for the Reclining Backrest. Back Frame Extension is located on the CR45 Base Frame page.

Item Number	Part Number	Description	Quantity
1, 4 - 7, 9 - 10, 11a, 11b, 12, 13a, 14a, 14b, 15a, 16, 17a, 17b, 18 - 22, 24 - 34	116518	Recline Back Kit, Short, 14-20" Width, Standard Gas Spring, CR45 <i>Kit includes parts for both sides</i>	1
1, 4 - 7, 9 - 10, 11a, 11b, 12, 13b, 14a, 14b, 15a, 16, 17a, 17b, 18 - 22, 24 - 34	116519	Recline Back Kit, Short, 16-22" Width, Standard Gas Spring, CR45 <i>Kit includes parts for both sides</i>	1
1, 4 - 7, 9 - 10, 11a, 11b, 12, 13a, 14a, 14b, 15b, 16, 17a, 17b, 18 - 22, 24 - 34	116520	Recline Back Kit, Tall, 14-20" Width, Standard Gas Spring, CR45 <i>Kit includes parts for both sides</i>	1
1, 4 - 7, 9 - 10, 11a, 11b, 12, 13b, 14a, 14b, 15b, 16, 17a, 17b, 18 - 22, 24 - 34	116521	Recline Back Kit, Tall, 16-22" Width, Standard Gas Spring, CR45 <i>Kit includes parts for both sides</i>	1
1, 2, 4 - 5, 7, 9 - 10, 11a, 11b, 12, 13a, 14a, 14b, 15a, 16, 17a, 17b, 19 - 22, 24- 34,	116522	Recline Back Kit, Short, 14-20" Width, Standard Gas Spring, Transit, CR45 <i>Kit includes parts for both sides</i>	1
1, 2, 4 - 5, 7, 9 - 10, 11a, 11b, 12, 13b, 14a, 14b, 15a, 16, 17a, 17b, 19 - 22, 24- 34,	116523	Recline Back Kit, Short, 16-22" Width, Standard Gas Spring, Transit, CR45 <i>Kit includes parts for both sides</i>	1
1, 2, 4 - 5, 7, 9 - 10, 11a, 11b, 12, 13a, 14a, 14b, 15b, 16, 17a, 17b, 19 - 22, 24- 34,	116524	Recline Back Kit, Tall, 14-20" Width, Standard Gas Spring, Transit, CR45 <i>Kit includes parts for both sides</i>	1
1, 2, 4 - 5, 7, 9 - 10, 11a, 11b, 12, 13b, 14a, 14b, 15b, 16, 17a, 17b, 19 - 22, 24- 34,	116525	Recline Back Kit, Tall, 16-22" Width, Standard Gas Spring, Transit, CR45 <i>Kit includes parts for both sides</i>	1

Item Number	Part Number	Description	Quantity
1, 4 - 7, 9 - 10, 11a, 11b, 12, 13a, 14c, 14d, 15a, 16, 17a, 17b, 19 - 22, 24 - 34	116530	Recline Back Kit, Short, 14-20" Width, Heavy Duty Gas Spring <i>Kit includes parts for both sides</i>	1
1, 4 - 7, 9 - 10, 11a, 11b, 12, 13b, 14c, 14d, 15a, 16, 17a, 17b, 19 - 22, 24 - 34	116531	Recline Back Kit, Short, 16-22" Width, Heavy Duty Gas Spring <i>Kit includes parts for both sides</i>	1
1, 4 - 7, 9 - 10, 11a, 11b, 12, 13a, 14c, 14d, 15b, 16, 17a, 17b, 19 - 22, 24 - 34	116532	Recline Back Kit, Tall, 14-20" Width, Heavy Duty Gas Spring <i>Kit includes parts for both sides</i>	1
1, 4 - 7, 9 - 10, 11a, 11b, 12, 13b, 14c, 14d, 15b, 16, 17a, 17b, 19 - 22, 24 - 34	116533	Recline Back Kit, Tall, 16-22" Width, Heavy Duty Gas Spring <i>Kit includes parts for both sides</i>	1
1, 2, 4 - 7, 9 - 10, 11a, 11b, 12, 13a, 14c, 14d, 15a, 16, 17a, 17b, 19 - 22, 24 - 34	116534	Recline Back Kit, Short, 14-20" Width, Heavy Duty Gas Spring, Transit <i>Kit includes parts for both sides</i>	1
1, 2, 4 - 7, 9 - 10, 11a, 11b, 12, 13b, 14c, 14d, 15a, 16, 17a, 17b, 19 - 22, 24 - 34	116535	Recline Back Kit, Short, 16-22" Width, Heavy Duty Gas Spring, Transit <i>Kit includes parts for both sides</i>	1
1, 2, 4 - 7, 9 - 10, 11a, 11b, 12, 13a, 14c, 14d, 15b, 16, 17a, 17b, 19 - 22, 24 - 34	116536	Recline Back Kit, Tall, 14-20" Width, Heavy Duty Gas Spring, Transit <i>Kit includes parts for both sides</i>	1
1, 2, 4 - 7, 9 - 10, 11a, 11b, 12, 13b, 14c, 14d, 15b, 16, 17a, 17b, 19 - 22, 24 - 34	116537	Recline Back Kit, Tall, 16-22" Width, Heavy Duty Gas Spring, Transit <i>Kit includes parts for both sides</i>	1
7, 9 - 10, 11a, 12, 33 - 34	506760	Recline Back Tube Subassembly, Short, Right	1
7, 9 - 10, 11b, 12, 33 - 34	506761	Recline Back Tube Subassembly, Short, Left	1

Item Number	Part Number	Description	Quantity
8 - 10, 11a, 12, 33 - 34	506762	Recline Back Tube Subassembly, Tall, Right	1
8 - 10, 11b, 12, 33 - 34	506763	Recline Back Tube Subassembly, Tall, Left	1
1, 4 - 5, 19 - 20, 24, 29, 31 - 32	116526	Reclining Backrest Hardware Assembly (One Side), Std, CR45	1
1, 2, 4 - 5, 19 - 20, 24, 29, 31 - 32	116527	Reclining Backrest Hardware Assembly (One Side), Transit, CR45	1
11, 12, 25b, 33, 34	122918	Push Handle Tube w/ Grip and Hardware, Left	1
11, 12, 25a, 33, 34	122920	Push Handle Tube w/ Grip and Hardware, Right	1
1	112493	Recline Back Plate, CR45	1
2	112494	Transit Recline Back Plate, CR45	1
3	112492	Backrest Adapter Plate, CR45	1
4	112491	Saddle, Dual, 1" x 2.0SP	2
5	001271	1" Saddle, .323 Hole	1
6	001267	Plug, Back Tube, Lower, Recline	1
7	122738	Back Tube Weld Recline Short <i>Used on chairs starting 12/18/23</i>	1
8	122739	Back Tube Weld Recline Tall <i>Used on chairs starting 12/18/23</i>	1
9	001266	Bushing .832 OD x .720 ID <i>Used on chairs starting 12/18/23</i>	1
10	116066	Locking Hinge Assembly <i>Used on chairs starting 12/18/23</i>	1
11	101843	M5 x 20 SHCS Blk Zn	1
12	001098	Foam Push Handle Tilt	1
13a	002578	Growth Strut, Stroller, Short	1
13b	002579	Growth Strut, Stroller, Long	1
14a	001264	Gas Spring Lock 92mm 20kg, Left (Standard Weight Capacity)	1
14b	001265	Gas Spring Lock 92mm 20kg, Right (Standard Weight Capacity)	1
14c	001375	Gas Spring Lock 92mm 40kg, Left (Heavy Duty)	1
14d	001376	Gas Spring Lock 92mm 40kg, Right (Heavy Duty)	1

Item Number	Part Number	Description	Quantity
15a	004551	Cable, Recline, Short Tilt	1
15b	004552	Cable, Recline, Tall Tilt	1
16	001117	Cable Clip 1"	1
17a	001298	Cover, Gas Spring, Left	1
17b	001299	Cover, Gas Spring, Right	1
18	002801	Lever Assembly Horizontal Tilt	1
19	001075	Stop Pin Backrest Tilt	2
20	102081	Bushing Flange .319 IDx.394 OD	2
21	101076	1/4" E Ring	1
22	101814	M8 x 25 BHCS Blk Zn	1
23	107139	M6 x 70, BHCS, P/THD BLZ	2
24	101781	M6 x 50mm Partial Thread BHCS Blk ZC	2
26	100734	M5 x 16 PHMS ZC	1
27	102328	M4 x 25 Pan Head Phil Blk Zn	1
28	100659	M8 Nylock Nut Blk Zn	1
29	100658	M6 Nylock Nut Blk Zn	2
30	102329	M4 Nylock Nut Blk Zn	1
31	100746	M6 Flat Washer Blk Zn	2
32	101861	Nylon Washer 5/16 x 1/2 x .03	2
34	100669	M5 x 10 BTN SHCS BLKZC w/Patch <i>Used on chairs starting 12/18/23</i>	6
35	102904	Tilt Stop Flip / Liberty / Arc	1