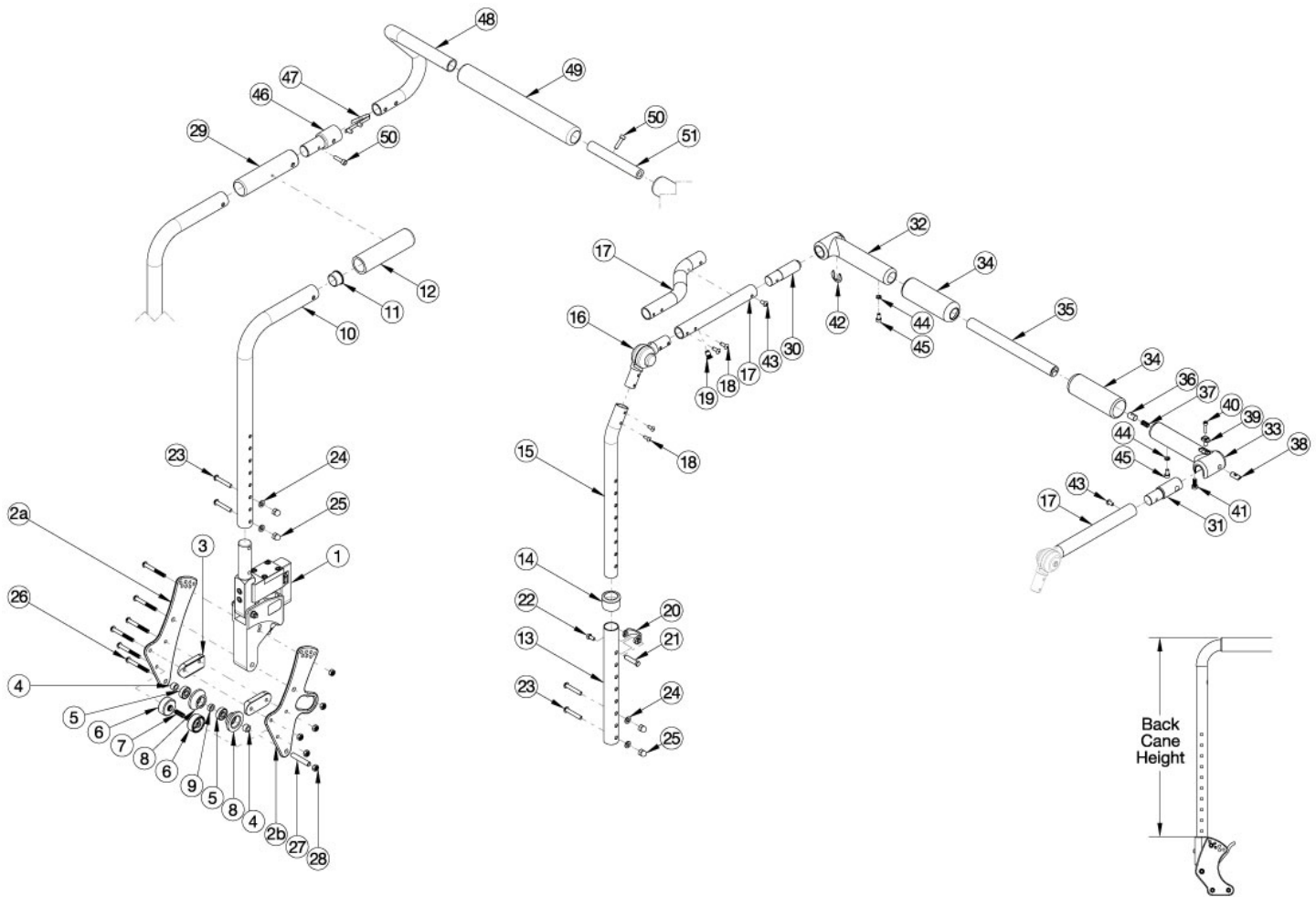


Arc Dynamics Rocker Back



Back Cane	Height
Short	18.5"
Long	22.5"

Handle Crosstube (Item 35)	
Chair Width Range	Part No.
Small & Large	110264
Medium & X-Large	110265

Callout #17: 10"-13" widths receive the curved tube and 14"-18" widths receive the straight shaped tube. When changing backrest types, check to see if new cables and tilt triggers are needed for both foot and hand tilts.

Item Number	Part Number	Description	Quantity
1a, 2a	113875	Dynamic Rocker Back for Adjustable Height Backrest with Standard Back Plate, PAIR, Arc	1
1b, 2a	113876	Dynamic Rocker Back for Stroller Handle Backrest with Standard Back Plate, PAIR, Arc	1
1a, 2a, 2b	113877	Dynamic Rocker Back for Adjustable Height Backrest with Transit Back Plate, PAIR, Arc	1
1b, 2a, 2b	113878	Dynamic Rocker Back for Stroller Handle Backrest with Transit Back Plate, PAIR, Arc	1
10a, 11, 12, 23-25	113879	Stroller Handle Back Tube with Grip, Dynamic Rocker Back, Short, Arc	1

Item Number	Part Number	Description	Quantity
10b, 11, 12, 23-25	113880	Stroller Handle Back Tube with Grip, Dynamic Rocker Back, Tall, Arc	1
10a, 23-25, 29	113881	Stroller Handle Back Tube with Grip for Stroller Handle Extension, Dynamic Rocker Back, Short, Arc	1
10b, 23-25, 29	113882	Stroller Handle Back Tube with Grip for Stroller Handle Extension, Dynamic Rocker Back, Tall, Arc	1
13, 14, 20-25	113883	Height Adjustable Back Tube Assembly, Lower, Dynamic Rocker Back, Tall, Arc	1
15a, 16, 17a, 18, 19, 43	113884	Height Adjustable Back Tube Assembly, Upper, Dynamic Rocker Back, 10-13" Wide, Right, Arc	1
15b, 16, 17b, 18, 19, 43	113885	Height Adjustable Back Tube Assembly, Upper, Dynamic Rocker Back, 10-13" Wide, Left, Arc	1
15a, 16, 17c, 18, 19, 43	113886	Height Adjustable Back Tube Assembly, Upper, Dynamic Rocker Back, 14-18" Wide, Right, Arc	1
15b, 16, 17d, 18, 19, 43	113887	Height Adjustable Back Tube Assembly, Upper, Dynamic Rocker Back, 14-18" Wide, Left, Arc	1
46, 47, 48a, 48b, 49, 50, 51a	113539	Removable Stroller Handle Assembly, 10" width, Arc	1
46, 47, 48a, 48b, 49, 50, 51b	113540	Removable Stroller Handle Assembly, 11-13" width, Arc	1
46, 47, 48c, 48d, 49, 50, 51c	113541	Removable Stroller Handle Assembly, 14-18" width, Arc	1
30, 32, 34, 42, 44, 45	113600	Rigidizer Handle Pivot Assembly with Adapter with Foam Grip, Arc	1
31, 33, 34, 36-41, 44, 45	113601	Rigidizer Handle Latch Assembly with Adapter with Foam Grip, Arc	1
30-34, 25a, 36-45	113602	Rigidizer Handle Complete Assembly, Small and Large Width Ranges, Arc	1
30-34, 25b, 36-45	113603	Rigidizer Handle Complete Assembly, Medium and X-Large Width Ranges, Arc	1
4-9, 27, 28	113546	Backrest Roller Kit, Arc	1
3, 26, 28	113888	Dynamic Rocker Back Frame Attaching Hardware Kit, Arc	1
2a	110190	Back Plate, Bearing Guide, Standard	1
2b	113181	Transit Back Plate, Standard, Arc	1
3	002595	Saddle, Dual, 1" OD X 1.5 SP	1
11	100804	Tube End Plug 1"	1
14	001083	Bushing Height Adjustable Back Tilt	1
20	000988	Fastener Retainer	1
21	000987	Threaded Fastener	1
22	200427	M5 x 10 CLS8.8 HHCS ZC w/Patch DIN933	1

Item Number	Part Number	Description	Quantity
23	101811	M6 x 35 BHCS Blk Zn	2
24	100746	M6 Flat Washer Blk Zn	2
25	100558	M6 NYL INS Domed Cap L/N ZC	2
26	101781	M6 x 50mm Partial Thread BHCS Blk ZC	6
28	100658	M6 Nylock Nut Blk Zn	6
31	110259	Adapter, Latch, Rigidizer Handle	1
35a	110264	Cross Tube, Rigidizer Handle, 14-16 Wide	1
35b	110265	Cross Tube, Rigidizer Handle, 16-18 Wide	1
40	110290	SHCS, M4 x 0.7 x 18, CLS12.9, BLZ, NYL, DIN912	1
41	101185	M6 x 14 CLS8.8 DIN7984 Low SHCS BLKZC	1
42	110291	E-RING, M13-M18, DIN6799, ZC	1
43	100669	M5 x 10 BTN SHCS BLKZC w/Patch	1
44	102614	M5 Split Lock Washer BLK ZC	1
45	101766	M5 x 10 CLS12.9 DIN912 SHCS PLN	1
46	001243	Stroller Handle Adaptor	1
50	101843	M5 x 20 SHCS Blk Zn	1
51a	002032	Growth Strut, Stroller, 10-12 <i>Used on 10" widths</i>	1
51b	002033	Growth Strut, Stroller, 11-13 <i>Used on 11-13" widths</i>	1
51c	002578	Growth Strut, Stroller, Short <i>Used on 14-18" Widths</i>	1