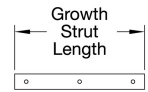
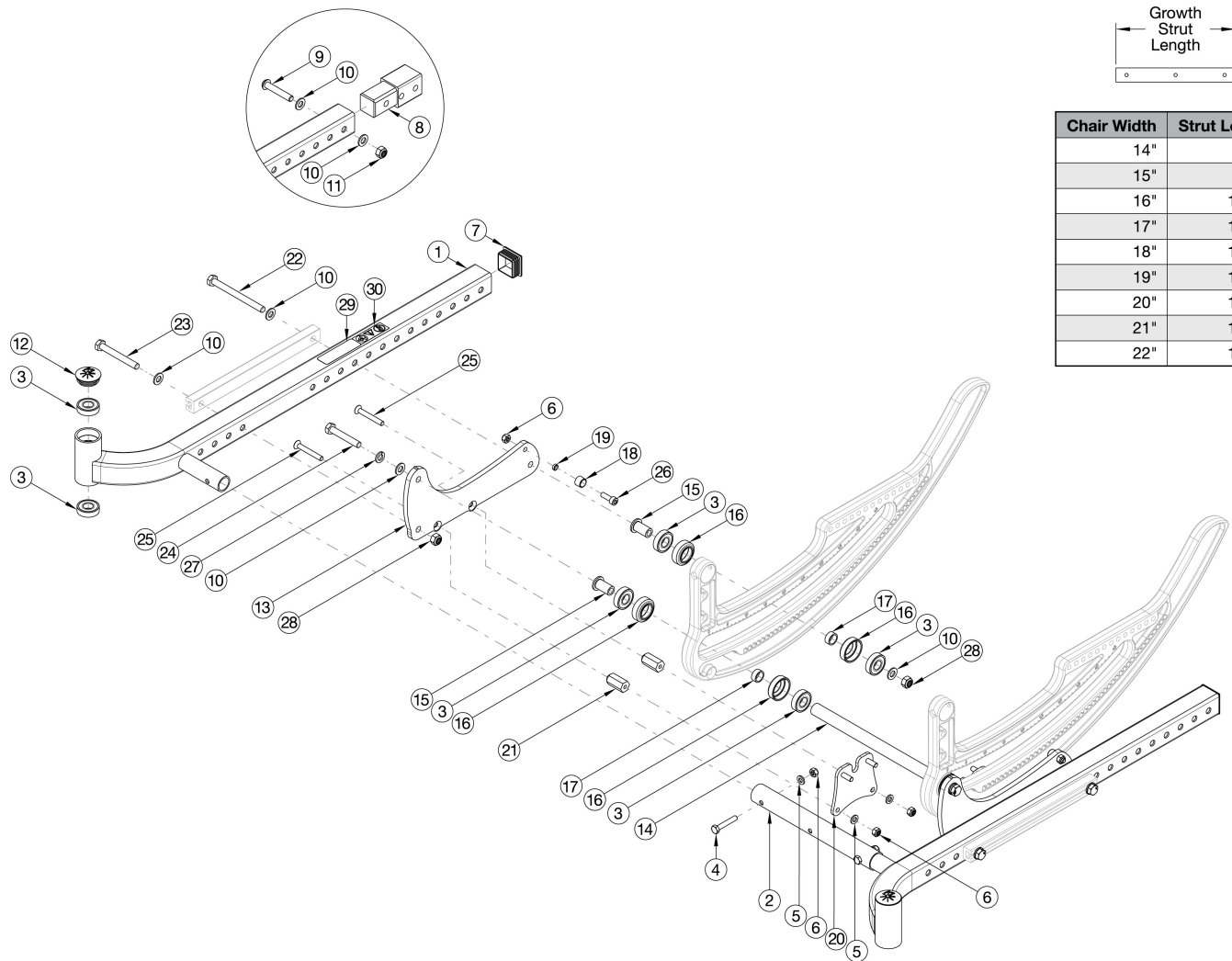


# CR45 Base Frame



Chair Width	Strut Length
14"	8.46"
15"	9.46"
16"	10.46"
17"	11.46"
18"	12.46"
19"	13.46"
20"	14.46"
21"	15.46"
22"	16.46"

Please note: Left side base frames are the same with or without transit. If quoting a Left Frame for Australia or New Zealand, 122921 is required when transit is not present.

Item Number	Part Number	Description	Quantity
1a, 3, 7, 29 - 30	116343_ _ _	Base Frame Assembly Right Low	1
1b, 3, 7	116345_ _ _	Base Frame Assembly Left Low	1
1a, 1b, 3, 7, 29 - 30	116351_ _ _	Base Frame Assembly Pair Low	1
1a, 3, 7, 29	116355_ _ _	Base Frame Assembly Right Low Transit	1
1a, 1b, 3, 7, 29	116359_ _ _	Base Frame Assembly Pair Low Transit	1
1a, 3, 7, 29 - 30	116346_ _ _	Base Frame Assembly Right High	1
1b, 3, 7	116344_ _ _	Base Frame Assembly Left High	1

Item Number	Part Number	Description	Quantity
1a, 1b, 3, 7, 29 - 30	116352_ _ _	Base Frame Assembly Pair High	1
1b, 3, 7, 29	116356_ _ _	Base Frame Assembly Right High Transit	1
1a, 1b, 3, 7, 29	116360_ _ _	Base Frame Assembly Pair High Transit	1
1a, 3, 8-11, 29 - 30	116347_ _ _	Base Frame Assembly Extended Right Low <i>Used only with the Reclining Back and Seat Depths of 21" or 22"</i>	1
1b, 3, 8-11	116349_ _ _	Base Frame Assembly Extended Left Low <i>Used only with the Reclining Back and Seat Depths of 21" or 22"</i>	1
1a, 1b, 3, 8-11, 29 - 30	116353_ _ _	Base Frame Assembly Extended Pair Low <i>Used only with the Reclining Back and Seat Depths of 21" or 22"</i>	1
1a, 3, 8-11, 29	116357_ _ _	Base Frame Assembly Extended Right Low Transit <i>Used only with the Reclining Back and Seat Depths of 21" or 22"</i>	1
1a, 1b, 3, 8-11, 29	116361_ _ _	Base Frame Assembly Extended Pair Low Transit <i>Used only with the Reclining Back and Seat Depths of 21" or 22"</i>	1
1b, 3, 8-11, 29 - 30	116350_ _ _	Base Frame Assembly Extended Right High <i>Used only with the Reclining Back and Seat Depths of 21" or 22"</i>	1
1a, 3, 8-11	116348_ _ _	Base Frame Assembly Extended Left High <i>Used only with the Reclining Back and Seat Depths of 21" or 22"</i>	1
1a, 1b, 3, 8-11, 29 - 30	116354_ _ _	Base Frame Assembly Extended Pair High <i>Used only with the Reclining Back and Seat Depths of 21" or 22"</i>	1
1a, 3, 8-11, 29	116358_ _ _	Base Frame Assembly Extended Right High Transit <i>Used only with the Reclining Back and Seat Depths of 21" or 22"</i>	1
1a, 1b, 3, 8-11, 29	116362_ _ _	Base Frame Assembly Extended Pair High Transit <i>Used only with the Reclining Back and Seat Depths of 21" or 22"</i>	1
13	116300	Roller Plate w/ Decal Each	1
13	116301	Roller Plate w/ Decal, Pair	1
2a	112450	Frame Strut Tube 14W	1
2b	112451	Frame Strut Tube 15W	1
2c	112452	Frame Strut Tube 16W	1
2d	112453	Frame Strut Tube 17W	1

Item Number	Part Number	Description	Quantity
2e	112454	Frame Strut Tube 18W	1
2f	112455	Frame Strut Tube 19W	1
2g	112456	Frame Strut Tube 20W	1
2h	112457	Frame Strut Tube 21W	1
2i	112458	Frame Strut Tube 22W	1
3	100902	Bearing 1 1/8" x 1/2" R8RS	8
4	102386	M6 x 35mm HHCS Blk Zc	2
5	100746	M6 Flat Washer Blk Zn	2
6	100658	M6 Nylock Nut Blk Zn	2
7	112438	Square Plug 1-1/4	2
8	112439	Base Frame Extension, CR45 <i>Used only with the Reclining Back and Seat Depths of 21" or 22"</i>	2
9	100673	M8 x 45 BTN SHCS BLKZC	2
10	101858	Washer Flat M8 Blk Zn	2
11	100659	M8 Nylock Nut Blk Zn	2
12	102005	Ki Caster Housing Cap	2
13	112440	Roller Plate, CR45	2
14a	112460	Rotary Strut 14W	2
14b	112461	Rotary Strut 15W	2
14c	112462	Rotary Strut 16W	2
14d	112463	Rotary Strut 17W	2
14e	112464	Rotary Strut 18W	2
14f	112465	Rotary Strut 19W	2
14g	112466	Rotary Strut 20W	2
14h	112467	Rotary Strut 21W	2
14i	112468	Rotary Strut 22W	2
15	112441	Bearing Bushing	4
16	001015	Bearing Liner TILT	8

Item Number	Part Number	Description	Quantity
17	001016	Bearing Spacer TILT	4
18	112442	Upper Bearing	2
19	112443	Spacer, .312ODx.242IDx.100LG, SS	2
20	112476	Tilt Lock Plate	2
21	112487	Tilt Lock Plate Spacer	4
22	101832	M8 x 90 HHCS Blk Zn	2
23	101829	M8 x 65 HHCS Blk Zn	2
24	112533	HHCS, M8x1.25x50, CLS10.9, BLZ, ISO7380	2
25	112532	FHCS, M6x1.0x45, CLS10.9, BLZ, DIN7991	4
26	101844	M6 x 18 SHCS Blk Zn	2
27	112535	Washer, Lock, M8, BLZ, DIN127B	2
28	100659	M8 Nylock Nut Blk Zn	4
	122921	Not AS/NZS 3696.19 Compliant On-Chair Label with Instruction	1

Matte Finish	
Code	Color Name
CGM	Charcoal Gray
EGM	Emerald Green
GGM	Graphite Gray*
IBM	Iridescent Burgundy
INM	Iridescent Navy
AGM	Military Green**
RRM	Retro Red
RBM	Royal Blue
SBM	Shadow Black
SWM	Smooth White

\* Discontinued Color

\*\* Formerly called Army Green

Gloss Finish	
Code	Color Name
BLK	Black
BLU	Blue
SKY	Blue Skies
BRO	Bright Orange*
PNK	Bubblegum Pink
BUR	Burgundy*
CBL	Candy Blue
PUR	Candy Purple
RED	Candy Red
COP	Copper
DPR	Deep Purple*
EBL	Electric Blue*
GRN	Forest Green*
FUS	Fuchsia*
GSM	Granny Smith
MTF	Metallic Fuchsia*
MOR	Metallic Orange
ORG	Orange*
BRD	Red
SAP	Sapphire*
SIL	Silver
TEA	Teal
YLW	Yellow
FLM	Graphic Image Transfer