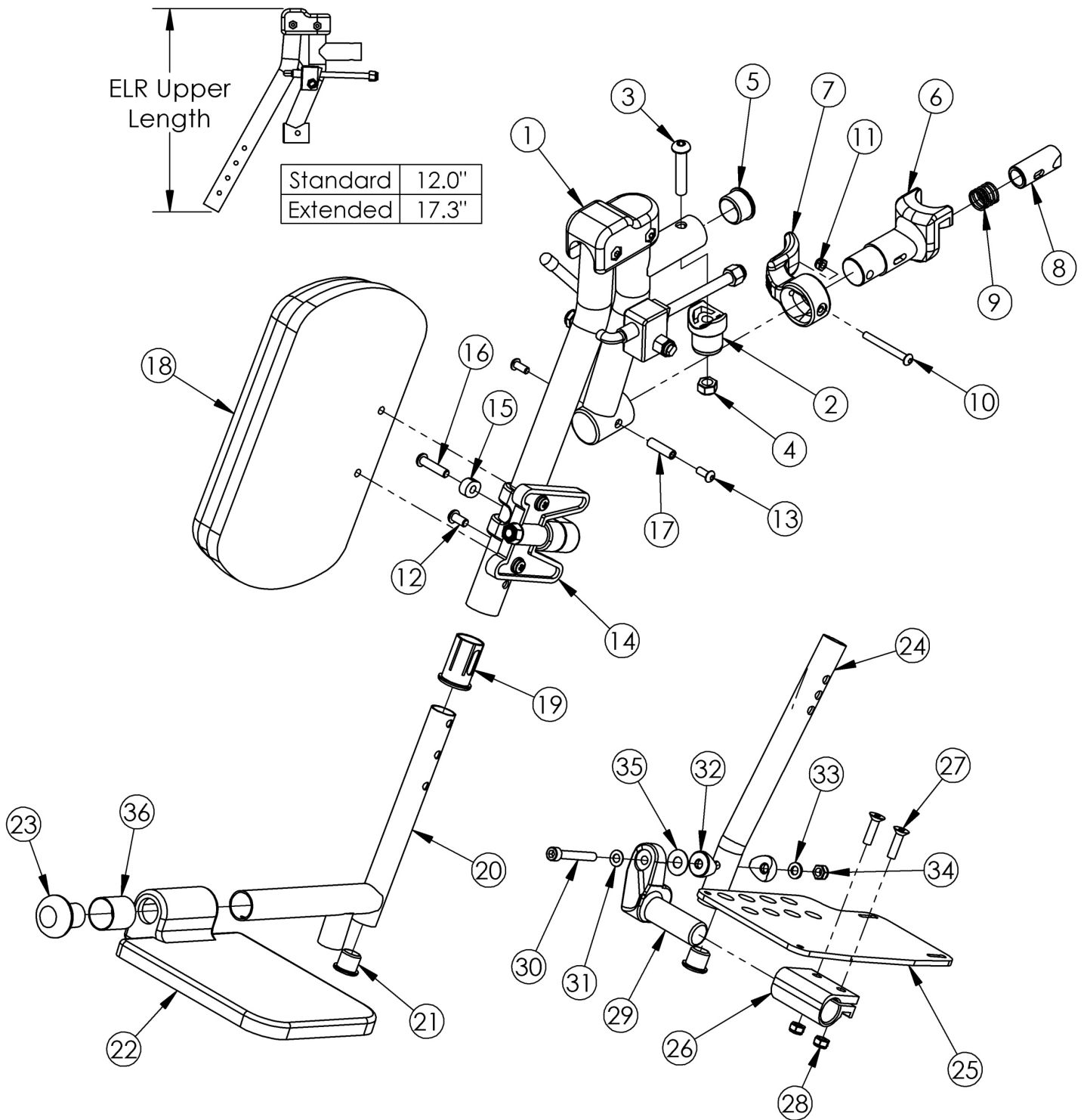


Focus Elevating Leg Rest (Discontinued)



The ELR assemblies on this page are discontinued. Please see the Elevating Leg Rest page for current assemblies. Small composite footplates are used for 14-16" seat widths. Large composite footplates are used on 17-22" seat widths. Sizes for assemblies are based on seat width with straight frame; if Tilt chair has Offset Frame, add 2" to seat width.

Item Number	Part Number	Description	Quantity
1d, 2-17, 18b, 19	501555	Extended Length ELR Assm Upper 14 Left	1
1c, 2-17, 18b, 19	501556	Extended Length ELR Assm Upper 14 Right	1
1d, 2-17, 18a, 19	501557	Extended Length ELR Assm Upper Left	1
1c, 2-17, 18a, 19	501558	Extended Length ELR Assm Upper Right	1
1a	500553-R	ELR Upper Standard Length Right	1
1b	500553L	ELR Upper Standard Length Left	1
1c	500601R	ELR Upper Extended Length Right	1
1d	500601L	ELR Upper Extended Length Left	1
2	000032	Footrest Hanger Pivot Saddle	1
3	100673	M8 x 45 BTN SHCS BLKZC	1
4	100659	M8 Nylock Nut Blk Zn	1
5	100804	Tube End Plug 1"	1
7	001158	Lever Swing Away Short	1
9	000119	Hanger Spring	1
10	001374	M5 x 40 BHCS P/THD BLKZC	1
11	100657	M5 Nylock Nut Blk Zn	1
12	100667	M6 x 12 BTN SHCS BLKZC w/Patch	1
13	100669	M5 x 10 BTN SHCS BLKZC w/Patch	2
14	101193	Calf Pad Mount Assembly	1
15	000556	ELR Index Spacer	1
16	100668	M6 x 20 CLS10.9 BTN SHCS ZC w/Patch	1
17	000073	M5 x 24 Threaded Barrel	1
18a	101585	Calf Pad	1
18b	101470	Pediatric Calf Pad	1
19	000034	Sleeve 3/4" x 1 1/2"	1
20b	000539	Footrest Extension Tube ELR Long	1
21	100638	Tube End Plug 3/4"	1

Item Number	Part Number	Description	Quantity
23	101586	ELR Footrest Bumper	1
25a	000105	Footplate Angle Adjustable 14-15" Wide CAT/TILT Left (Std ELR Right)	1
25b	000106	Footplate Angle Adjustable 14-15" Wide CAT/TILT Right (Std ELR Left)	1
25c	000107	Footplate Angle Adjustable 16-17" Wide CAT/TILT Left (Std ELR Right)	1
25d	000108	Footplate Angle Adjustable 16-17" Wide CAT/TILT Right (Std ELR Left)	1
25e	000109	Footplate Angle Adjustable 18-24" Wide CAT/TILT Left (Std ELR Right)	1
25f	000110	Footplate Angle Adjustable 18-24" Wide CAT/TILT Right (Std ELR Left)	1
26	100502	Angle Adj Footplate Clamp 2"	1
27	100662	M6 x 25 FSHCS BLK ZC	2
28	100658	M6 Nylock Nut Blk Zn	2
29a	000047	Footplate Angle Adjustable Casting 3/4 Right	1
29b	000049	Footplate Angle Adjustable Casting 3/4" Left	1
30	101472	M6 x 45 SHCS BLK ZC	1
31	101455	M6 Belleville Washer (.252 x .551 x .050)	1
32	000053	Saddle 3/4"	2
33	100746	M6 Flat Washer Blk Zn	1
34	101456	M6 Ovl Top L/N ZC	1
35	000428	Wear Washer	1
36	000621	ELR Spacer Small Footplate <i>Only used with small composite footplate</i>	1