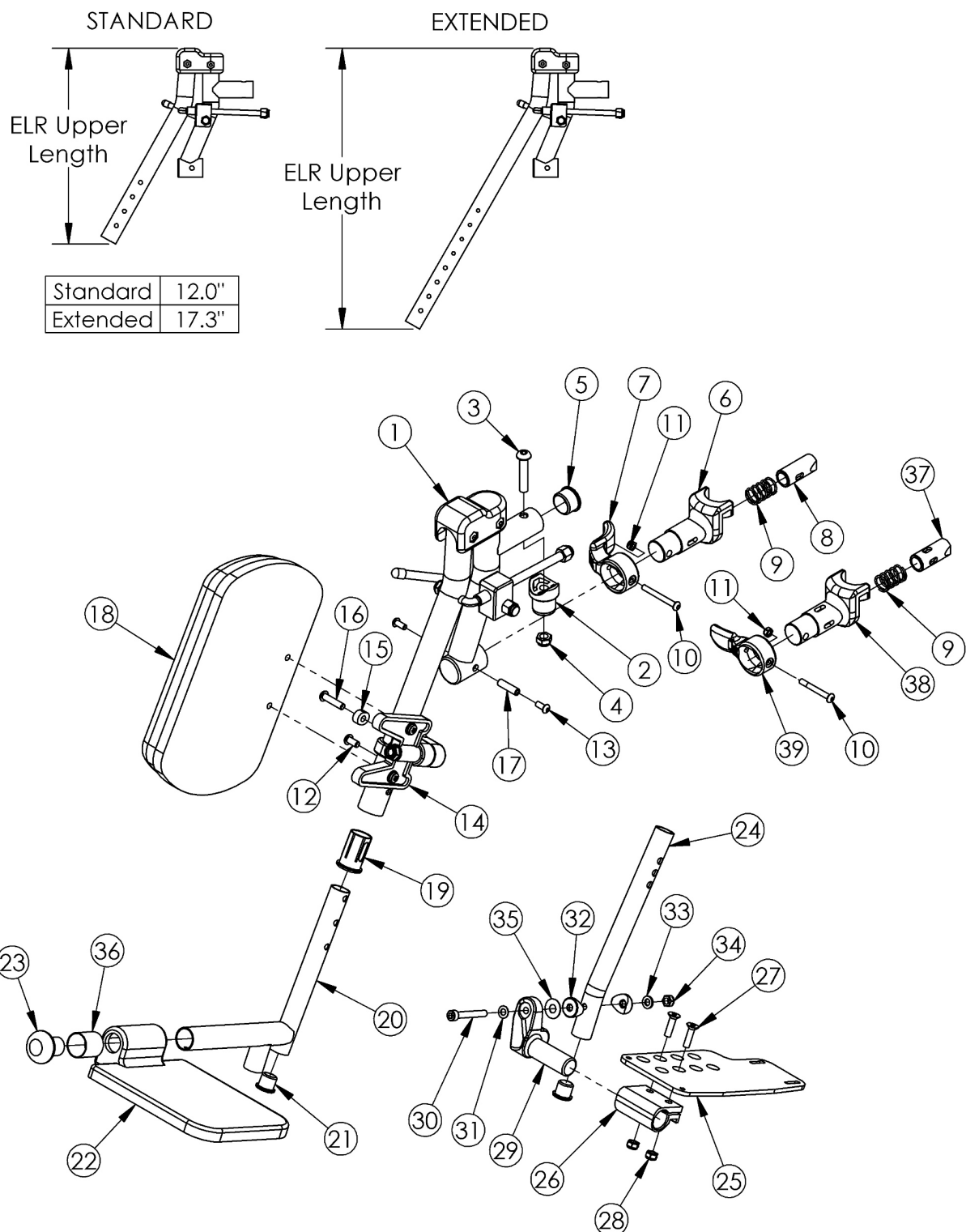


# **(Discontinued) Catalyst 4 Elevating Leg Rest - Complete Assemblies**

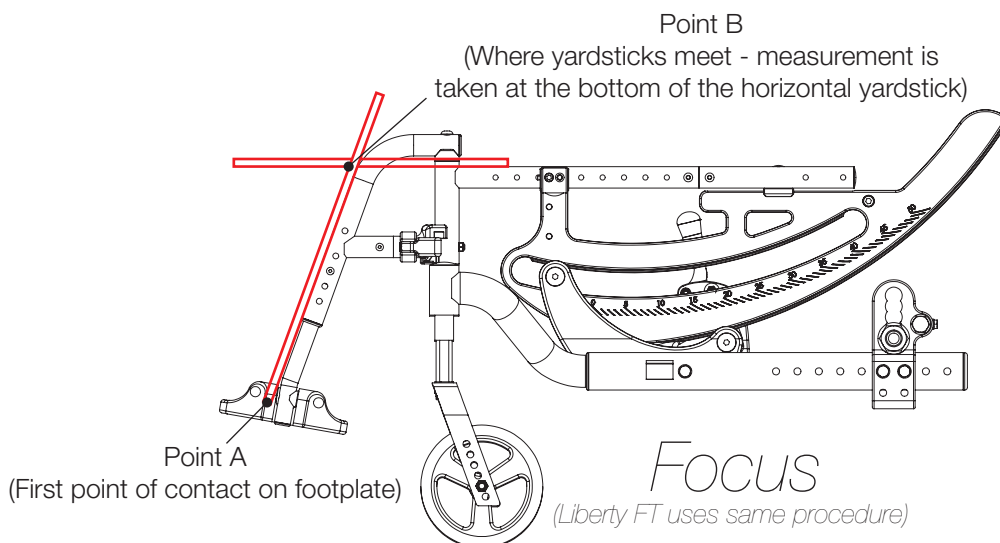


Item Number	Part Number	Description	Quantity	Retail
1a, 1b, 2-17, 18b, 19, 20b, 21, 22a, 23, 36	501034	ELR Assm 14 Comp FP Long Ext PAIR	1	\$477.83
1a, 1b, 2-17, 18b, 19, 20a, 21, 22a, 23, 36	501035	ELR Assm 14 Comp FP Short Ext PAIR	1	\$477.83
1a, 1b, 2-17, 18a, 19, 20b, 21, 22a, 23, 36	500554	ELR Assm 15/16 Small Comp FP Long Ext PAIR	1	\$477.83
1a, 1b, 2-17, 18a, 19, 20a, 21, 22a, 23, 36	500555	ELR Assm 15/16 Small Comp FP Short Ext PAIR	1	\$477.83
1a, 1b, 2-17, 18a, 19, 20b, 21, 22b, 23	500556	ELR Assm 17-22 Large Comp FP Long Ext PAIR	1	\$477.83
1a, 1b, 2-17, 18a, 19, 20a, 21, 22b, 23	500557	ELR Assm 17-22 Large Comp FP Short Ext PAIR	1	\$477.83
1a, 2-17, 18b, 19, 20b, 21, 22a, 23, 36	501036	ELR Assm 14 Comp FP Long Ext Right	1	\$238.92
1a, 2-17, 18b, 19, 20a, 21, 22a, 23, 36	501037	ELR Assm 14 Comp FP Short Ext Right	1	\$238.92
1a, 2-17, 18a, 19, 20b, 21, 22a, 23, 36	500560	ELR Assm 15/16 Small Comp FP Long Ext Right	1	\$238.92
1a, 2-17, 18a, 19, 20a, 21, 22a, 23, 36	500561	ELR Assm 15/16 Small Comp FP Short Ext Right	1	\$238.92
1a, 2-17, 18a, 19, 20a, 21, 22b, 23	500562	ELR Assm 17-22 Large Comp FP Short Ext Right	1	\$238.92
1a, 2-17, 18a, 19, 20b, 21, 22b, 23	500563	ELR Assm 17-22 Large Comp FP Long Ext Right	1	\$238.92
1b, 2-17, 18b, 19, 20b, 21, 22a, 23, 36	501038	ELR Assm 14 Comp FP Long Ext Left	1	\$238.92
1b, 2-17, 18b, 19, 20a, 21, 22a, 23, 36	501039	ELR Assm 14 Comp FP Short Ext Left	1	\$238.92
1b, 2-17, 18a, 19, 20b, 21, 22a, 23, 36	500566	ELR Assm 15/16 Small Comp FP Long Ext Left	1	\$238.92
1b, 2-17, 18a, 19, 20a, 21, 22a, 23, 36	500567	ELR Assm 15/16 Small Comp FP Short Ext Left	1	\$238.92
1b, 2-17, 18a, 19, 20a, 21, 22b, 23	500568	ELR Assm 17-22 Large Comp FP Short Ext Left	1	\$238.92
1b, 2-17, 18a, 19, 20b, 21, 22b, 23	500569	ELR Assm 17-22 Large Comp FP Long Ext Left	1	\$238.92
1c, 1d, 2-17, 18b, 19, 20b, 21, 22a, 23, 36	501559	Extended Length ELR Assm 14 Comp FP Long Ext PAIR	1	\$542.15

Item Number	Part Number	Description	Quantity	Retail
1c, 1d, 2-17, 18b, 19, 20a, 21, 22a, 23, 36	501560	Extended Length ELR Assm 14 Comp FP Short Ext PAIR	1	\$542.15
1c, 1d, 2-17, 18a, 19, 20b, 21, 22a, 23, 36	501561	Extended Length ELR Assm 15/16 Small Comp FP Long Ext PAIR	1	\$542.15
1c, 1d, 2-17, 18a, 19, 20a, 21, 22a, 23, 36	501562	Extended Length ELR Assm 15/16 Small Comp FP Short Ext PAIR	1	\$542.15
1c, 1d, 2-17, 18a, 19, 20b, 21, 22b, 23	501563	Extended Length ELR Assm 17-22 Large Comp FP Long Ext PAIR	1	\$542.15
1c, 1d, 2-17, 18a, 19, 20a, 21, 22b, 23	501564	Extended Length ELR Assm 17-22 Large Comp FP Short Ext PAIR	1	\$542.15
1c, 2-17, 18b, 19, 20b, 21, 22a, 23, 36	501565	Extended Length ELR Assm 14 Comp FP Long Ext Right	1	\$303.24
1c, 2-17, 18b, 19, 20a, 21, 22a, 23, 36	501566	Extended Length ELR Assm 14 Comp FP Short Ext Right	1	\$303.24
1c, 2-17, 18a, 19, 20b, 21, 22a, 23, 36	501567	Extended Length ELR Assm 15/16 Small Comp FP Long Ext Right	1	\$303.24
1c, 2-17, 18a, 19, 20a, 21, 22a, 23, 36	501568	Extended Length ELR Assm 15/16 Small Comp FP Short Ext Right	1	\$303.24
1c, 2-17, 18a, 19, 20a, 21, 22b, 23	501569	Extended Length ELR Assm 17-22 Large Comp FP Short Ext Right	1	\$303.24
1c, 2-17, 18a, 19, 20b, 21, 22b, 23	501570	Extended Length ELR Assm 17-22 Large Comp FP Long Ext Right	1	\$303.24
1d, 2-17, 18b, 19, 20b, 21, 22a, 23, 36	501571	Extended Length ELR Assm 14 Comp FP Long Ext Left	1	\$303.24
1d, 2-17, 18b, 19, 20a, 21, 22a, 23, 36	501572	Extended Length ELR Assm 14 Comp FP Short Ext Left	1	\$303.24
1d, 2-17, 18a, 19, 20b, 21, 22a, 23, 36	501573	Extended Length ELR Assm 15/16 Small Comp FP Long Ext Left	1	\$303.24
1d, 2-17, 18a, 19, 20a, 21, 22a, 23, 36	501574	Extended Length ELR Assm 15/16 Small Comp FP Short Ext Left	1	\$303.24
1d, 2-17, 18a, 19, 20a, 21, 22b, 23	501575	Extended Length ELR Assm 17-22 Large Comp FP Short Ext Left	1	\$303.24
1d, 2-17, 18a, 19, 20b, 21, 22b, 23	501576	Extended Length ELR Assm 17-22 Large Comp FP Long Ext Left	1	\$303.24

Distance between Point A and Point B  
B = Footplate Length

**NOTE:** The yardstick on the top plane of the seat frame must lie flat against frame. The yardstick going from the footplate to the second yardstick must be square against the hanger tube.



Distance between Point A and Point B  
B = Footplate Length

**NOTE:** The yardstick on the top plane of the seat frame must lie flat against frame. The yardstick going from the footplate to the second yardstick must be square against the front tube.



Distance between Point A and Point B  
B = Footplate Length

**NOTE:** The yardstick on the top plane of the hanger must lie flat against hanger. The yardstick going from the footplate to the second yardstick must be square against the hanger tube.

