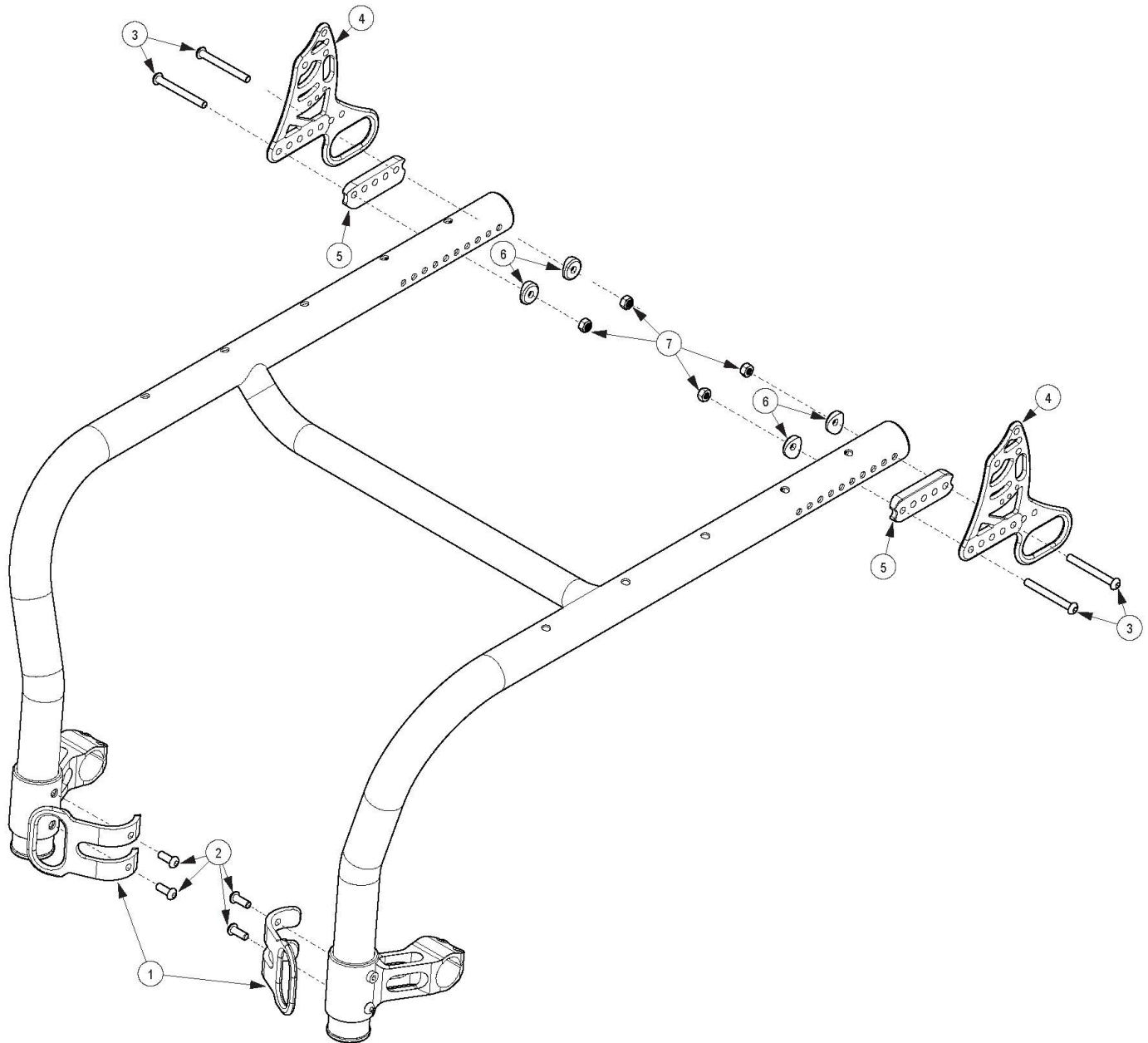


# (Discontinued) Rogue Style Transit Backrest Option on Rogue ALX (Formerly Tsunami)



*This Transit setup is used with the Rogue Style Locking Backrest For all backrest hardware options, please see Rogue Style Locking Backrest Mount and Hardware on Rogue ALX page Not available with Heavy Duty Option*

Item Number	Part Number	Description	Quantity
1 - 7	109635	Transit Bracket Retrofit Kit for Rogue Style Backrest with Standard Caster Mounts, RG ALX <i>Not available with Heavy Duty Option. This kit is a complete retrofit, containing a pair of front and rear transit brackets and hardware.</i>	1

Item Number	Part Number	Description	Quantity
2	101708	M6 x 14 BTN SHCS BLKZC w/Patch	4
3a	003232	M6 x 55 BHCS Blk Zc <i>Used when bolt goes through the tower and frame only. Also used when bolt goes through the frame, back bracket and back saddles.</i>	2
3b	107138	M6 x 65, BHCS, P/THD BLZ <i>Used when bolt goes through the tower, frame, back bracket and back saddle</i>	4
3c	101781	M6 x 50mm Partial Thread BHCS Blk ZC <i>Used when bolt goes through the frame, back bracket and back saddle</i>	4
4	109564	Back Bracket with Transit and Hook Label, Black, Rigid	2
5	003715	Back Saddle 1 3/8" Tube	2
6	003716	Saddle 1 3/8" Tube	4
7	100658	M6 Nylock Nut Blk Zn	6