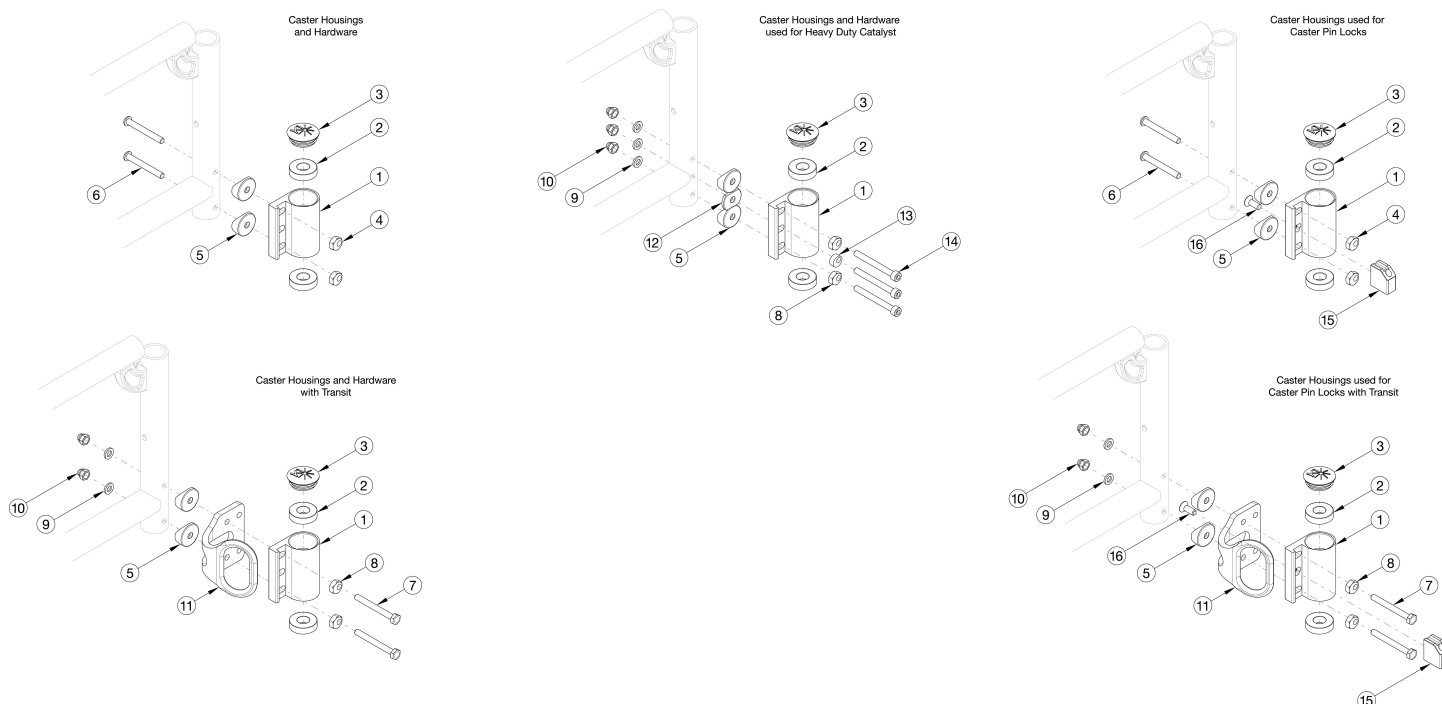


Catalyst 4 Caster Housing



If replacing a caster housing and the chair has caster pin locks, please see [Catalyst Caster Pin Locks](#) page. Please Note: The shown orientation of the caster housing above is in the "Forward" position.

Item Number	Part Number	Description	Quantity
1a, 2-6	501172	Standard Caster Housing Assembly, Black, Left, No Transit, Standard Weight Capacity, Catalyst	1
1a, 2, 3, 5, 8, 9, 10, 12, 13, 14	114594	Standard Caster Housing Assembly, Black, Left, No Transit, Heavy Duty Weight Capacity, Catalyst	1
1b, 2-6	501173	Standard Caster Housing Assembly, Black, Right, No Transit, Standard Weight Capacity, Catalyst	1
1b, 2, 3, 5, 8, 9, 10, 12, 13, 14	114595	Standard Caster Housing Assembly, Black, Right, No Transit, Heavy Duty Weight Capacity, Catalyst	1
1a, 1b, 2-6	501174	Standard Caster Housing Assembly, Black, PAIR, No Transit, Standard Weight Capacity, Catalyst	1
1a, 1b, 2, 3, 5, 8, 9, 10, 12, 13, 14	114596	Standard Caster Housing Assembly, Black, PAIR, No Transit, Heavy Duty Weight Capacity, Catalyst	1
1a, 2, 3, 5, 7-10	501175	Standard Caster Housing Assembly, Black, Left, Transit, Standard Weight Capacity, Catalyst <i>Transit Bracket not included in assembly</i>	1
1b, 2, 3, 5, 7-10	501176	Standard Caster Housing Assembly, Black, Right, Transit, Standard Weight Capacity, Catalyst <i>Transit Bracket not included in assembly</i>	1
1a, 1b, 2, 3, 5, 7-10	501177	Standard Caster Housing Assembly, Black, PAIR, Transit, Standard Weight Capacity, Catalyst <i>Transit Bracket not included in assembly</i>	1

Item Number	Part Number	Description	Quantity
1a, 2	100526	Caster Housing Left, Black, CAT/Liberty	1
1b, 2	100527	Caster Housing Right, Black, CAT/Liberty	1
1c, 2	001431	Standard Caster Housing for Caster Pin Lock, Left, Catalyst, Black <i>Not available with Heavy Duty option</i>	1
1d, 2	001432	Standard Caster Housing for Caster Pin Lock, Right, Catalyst, Black <i>Not available with Heavy Duty option</i>	1
2	100530	Bearing M28 x 1/2" 6001RS	2
3	102005	Ki Caster Housing Cap	1
4, 6	112171	Standard Caster Housing Attaching Hardware for Swing Away Frame, No Transit, Standard Weight Capacity, PAIR	1
4, 6, 15, 16	114599	Standard Caster Housing Attaching Hardware for Swing Away Frame with Caster Pin Locks, No Transit, Standard Weight Capacity, PAIR <i>Not all hardware used with Caster Pin Locks is shown in image</i>	1
4, 5, 6	114600	Standard Caster Housing Attaching Hardware Including Saddles for Swing Away Frame, No Transit, Standard Weight Capacity, PAIR	1
4, 5, 6, 15, 16	114601	Standard Caster Housing Attaching Hardware Including Saddles for Swing Away Frame with Caster Pin Locks, No Transit, Standard Weight Capacity, PAIR <i>Not all hardware used with Caster Pin Locks is shown in image</i>	1
5	000056	Saddle 1 1/8"	2
7-10	112956	Standard Caster Housing Attaching Hardware for Swing Away Frame, Transit, Standard Weight Capacity, PAIR <i>Transit Brackets not included in assembly</i>	1
7-10, 15, 16	114602	Standard Caster Housing Attaching Hardware for Swing Away Frame with Caster Pin Locks, Transit, Standard Weight Capacity, PAIR <i>Transit Brackets not included in assembly. Not all hardware used with Caster Pin Locks is shown in image</i>	1
5, 7-10	114603	Standard Caster Housing Attaching Hardware Including Saddles for Swing Away Frame, Transit, Standard Weight Capacity, PAIR <i>Transit Brackets not included in assembly</i>	1
5, 7-10, 15, 16	114604	Standard Caster Housing Attaching Hardware Including Saddles for Swing Away Frame with Caster Pin Locks, Transit, Standard Weight Capacity, PAIR <i>Transit Brackets not included in assembly. Not all hardware used with Caster Pin Locks is shown in image</i>	1
7	100677	M6 x 60 CLS10.9 DIN931 HHCS ZC	2
8	100510	Eccentric Washer	2
9	100746	M6 Flat Washer Blk Zn	3

Item Number	Part Number	Description	Quantity
10	100558	M6 NYL INS Domed Cap L/N ZC	3
12	111813	1 1/8" Half Saddle <i>Only used if Heavy Duty option is present on chairs starting with serial numbers C40043964, C50099247 or CVX0099946</i>	1
13	111544	Eccentric Washer, 0.50" Diameter <i>Only used if Heavy Duty option is present on chairs starting with serial numbers C40043964, C50099247 or CVX0099946</i>	1
14	111814	M6 x 55 SHCS, 45mm Shoulder, 10 mm Thread, CLS 12.9 <i>Only used if Heavy Duty option is present on chairs starting with serial numbers C40043964, C50099247 or CVX0099946</i>	3
15	200417	Caster Lock Mounting Block CAT	1
16	101721	M6 x 16 Btn SHCS w/ Patch	1
8, 9, 10, 13, 14	114597	Standard Caster Housing Attaching Hardware for Swing Away Frame, Heavy Duty Weight Capacity, PAIR	1
5, 8, 9, 10, 12, 13, 14	114598	Standard Caster Housing Attaching Hardware Including Saddles for Swing Away Frame, Heavy Duty Weight Capacity, PAIR	1