



## 80AMP BATTERY HARNESS INSTALLATION



Please read these instructions carefully before beginning the installation. Failure to understand and follow installation instructions may result in injury to installer and/or end user and may void the warranty. If you have any questions call Sunrise Medical Technical support at 800-333-4000.

### Harness installation parts:

#### QM7XX, Pulse, ZM310, & P222:

1. 150 deg. harness
2. 22/24/34 battery harness
3. Power harness ext. 450mm

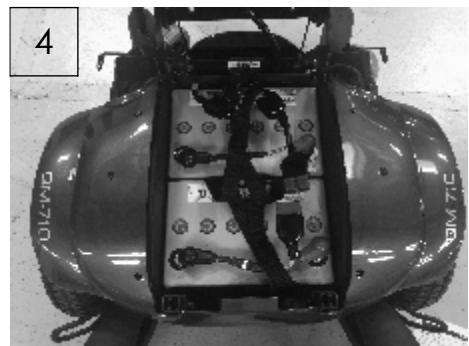
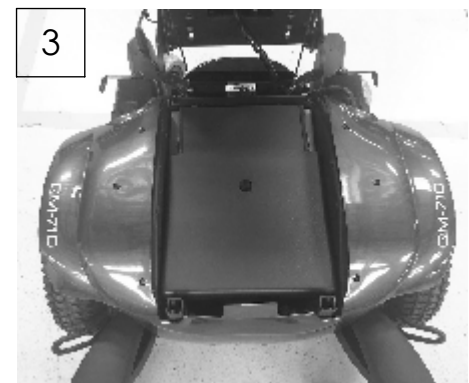
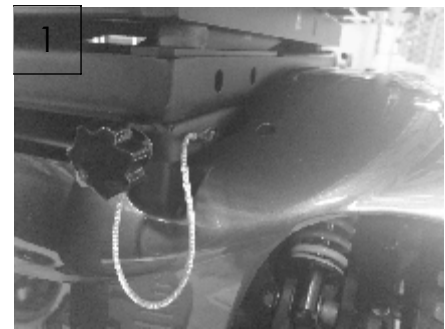
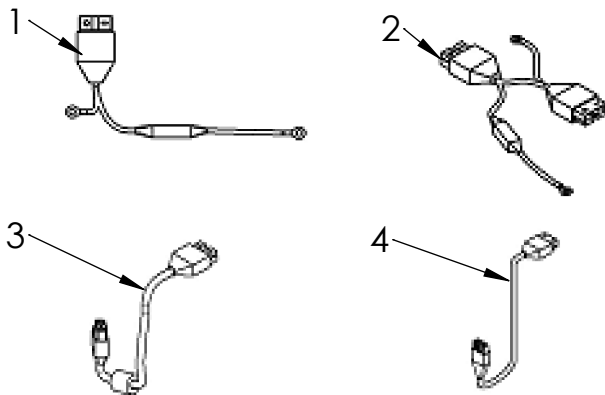
#### S636 & S646:

1. 150 deg. harness
2. 22/24/34 battery harness
4. Power harness ext. 750mm

### Tools needed:

1. Open end wrench
2. Torque wrench

### Parts:



### A. 70 AMP Battery Harness Access/Removal

1. For access to batteries, locate the left and right thumb screws holding the seating assembly to the base, Figure 1. Remove the thumb screws.



#### Warning

2. Remove cushion and pivot the entire seat/back frame assembly to the back to gain access to the battery cover under the front of the seat, Figure 2.
3. To expose the batteries, lift and pivot the battery access cover under the seat frame assembly, Figure 3.
4. Disconnect the 2 batteries as shown in Figure 4. Disconnect the main battery lead from the power base. You may now lift the batteries out of the battery box by using the attached lifting strap. **(Remember to use proper lifting techniques, the batteries are heavy.)** To remove the 70amp harnesses from the battery posts use an open end wrench.

**Note:** Pictures shown are of a QM7 series chair. Battery access on other chairs may differ slightly.



**NOTE:** It is important to replace all 70 amp battery harnesses with the 80 amp version, including the main battery lead that goes from the battery to the motor controller.

5. Attach 80 amp harnesses to the battery posts with an open end wrench as shown in Figure 5. It is recommended to tighten the battery harness hardware to a minimum torque of 60 in-lbs.

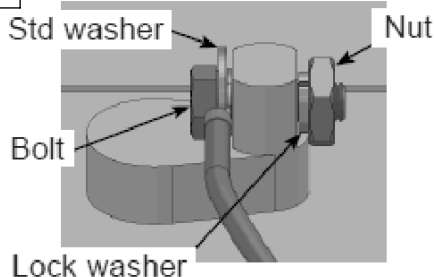


6. It is important to follow the basic hardware stackups shown below when re-attaching the harness to the battery posts for a reliable connection, Figure 6.

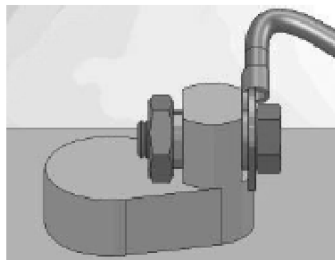


6

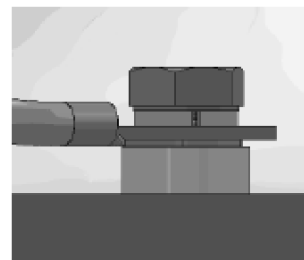
Option 1 Post on top



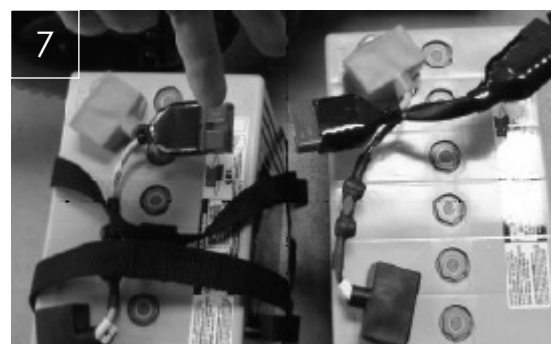
Option 2 Post on top



Option 3 Flat top



7. Lift the batteries into the battery box and reconnect the batteries to each other as shown in Figure 7. **(Remember to use proper lifting techniques, the batteries are heavy.)** Then reconnect the battery harness to the power base, Figure 8.



8

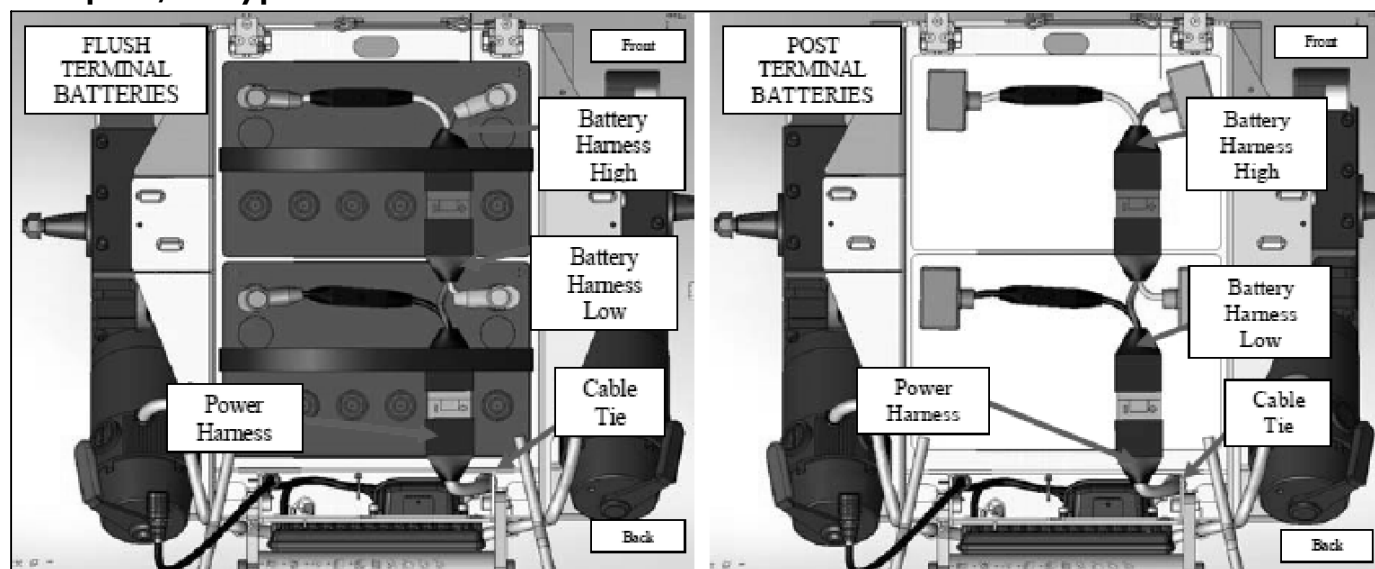




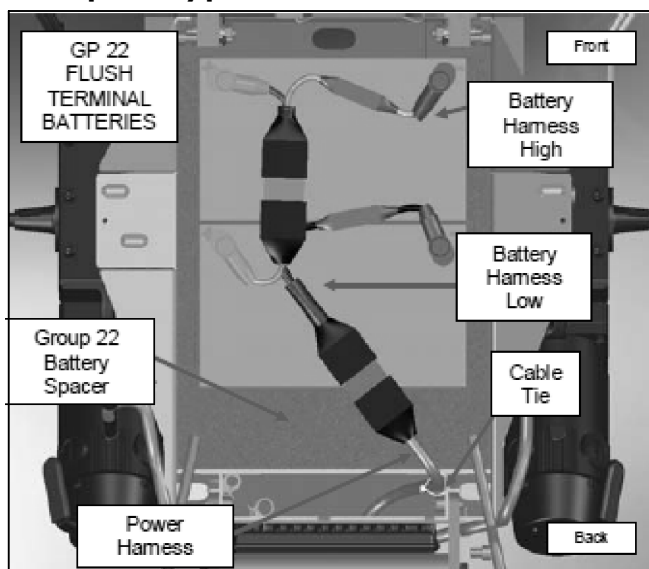
**Batteries installed incorrectly can blow the fuse for this system. Pay careful attention to install the battery harness across both batteries instead of to each of the batteries individually. Refer to battery wiring diagram below for reference.**

## Batteries

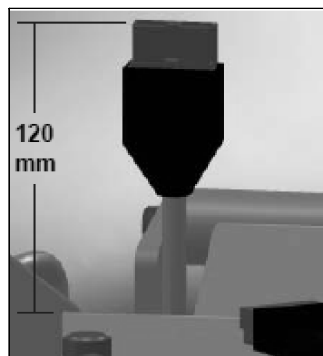
### Group 24/34 Type



### Group 22 Type



**Leave at least 120mm from the top of the Battery box, and secure with cable tie as shown in drawings when replacing Power Harness.**



Sunrise Medical 2842 Business Park Ave Fresno, CA 93727 USA  
In Canada (800) 263-3390