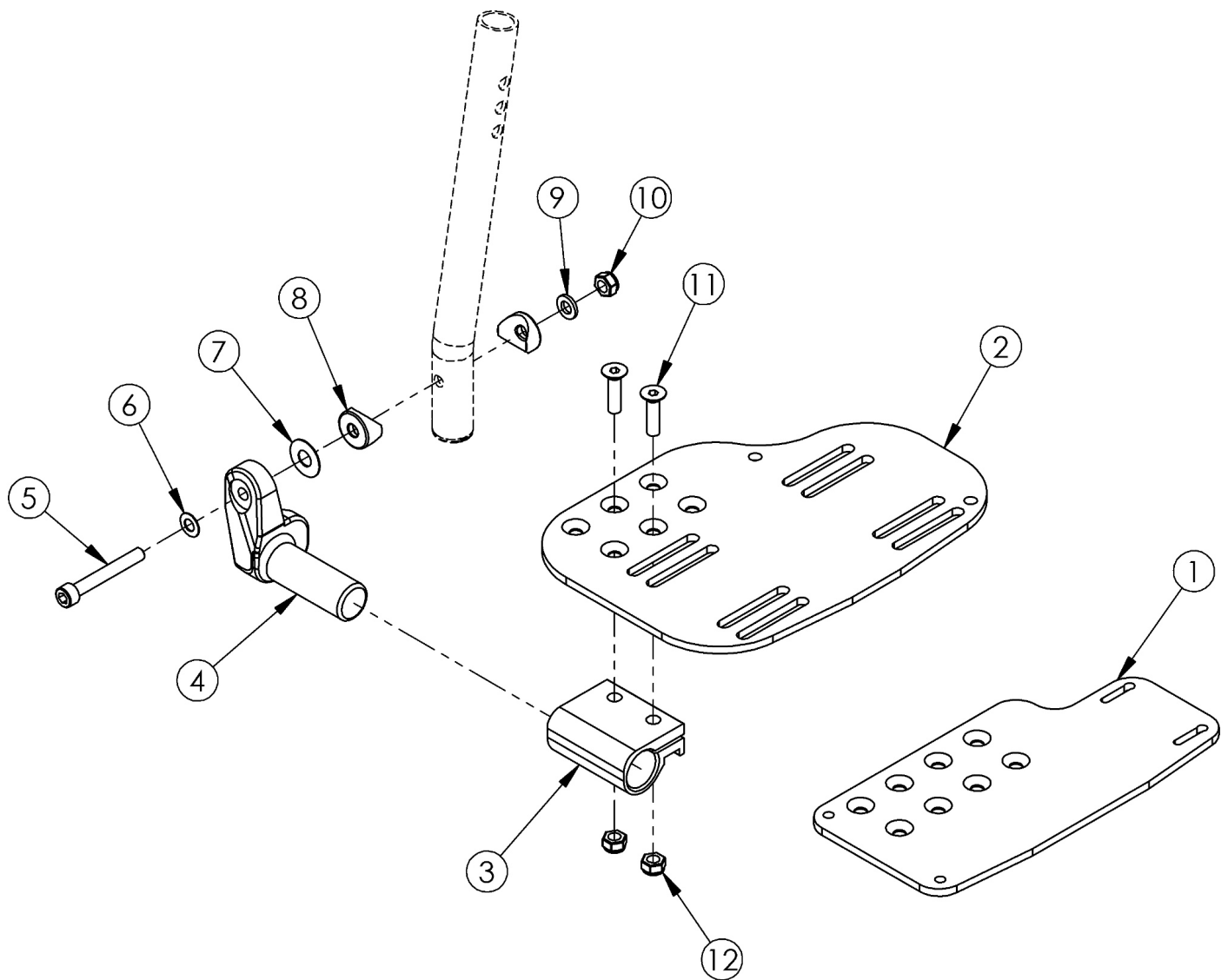


Angle Adjustable Footplate - Extension Mount



Sizes for footplates/assemblies are based on seat width with straight frame; if Tilt chair has Offset Frame, add 2" to seat width. If changing footplate style, new extension tubes may be needed.

Item Number	Part Number	Description	Quantity
3, 4b, 5-12	502202	Footplate Hardware Assembly Angle Adjustable Extension Mount/ELR Left	1
3, 4a, 5-12	502203	Footplate Hardware Assembly Angle Adjustable Extension Mount/ELR Right	1
3, 4a, 4b, 5-12	502204	Footplate Hardware Assembly Angle Adjustable Extension Mount/ELR Pair	1
1a, 3, 4b, 5-12	501049	Footplate Angle Adjustable Extension Mount Assembly 10-11 Wide Left	1
1b, 3, 4a, 5-12	501050	Footplate Angle Adjustable Extension Mount Assembly 10-11 Wide Right	1

Item Number	Part Number	Description	Quantity
1a, 1b, 3, 4a, 4b, 5-12	501051	Footplate Angle Adjustable Extension Mount Assembly 10-11 Wide PAIR	1
1c, 3, 4b, 5-12	501052	Footplate Angle Adjustable Extension Mount Assembly 12-13 Wide Left	1
1d, 3, 4a, 5-12	501053	Footplate Angle Adjustable Extension Mount Assembly 12-13 Wide Right	1
1c, 1d, 3, 4a, 4b, 5-12	501054	Footplate Angle Adjustable Extension Mount Assembly 12-13 Wide Pair	1
2a, 3, 4b, 5-12	100252	Footplate Angle Adjustable 14-15 Wide Extension Mount Left/ELR Right Assembly	1
2b, 3, 4a, 5-12	100253	Footplate Angle Adjustable 14-15 Wide Extension Mount Right/ELR Left Assembly	1
2a, 2b, 3, 4a, 4b, 5-12	100254	Footplate Angle Adjustable 14-15 Wide Extension Mount/ELR PAIR Assembly	1
2c, 3, 4b, 5-12	100255	Footplate Angle Adjustable 16-17 Wide Extension Mount Left/ELR Right Assembly	1
2d, 3, 4a, 5-12	100256	Footplate Angle Adjustable 16-17 Wide Extension Mount Right/ELR Left Assembly	1
2c, 2d, 3, 4a, 4b, 5-12	100257	Footplate Angle Adjustable 16-17 Wide Extension Mount/ELR PAIR Assembly	1
2e, 3, 4b, 5-12	100258	Footplate Angle Adjustable 18-24 Wide Extension Mount Left/ELR Right Assembly	1
2f, 3, 4a, 5-12	100259	Footplate Angle Adjustable 18-24 Wide Extension Mount Right/ELR Left Assembly	1
2e, 2f, 3, 4a, 4b, 5-12	100260	Footplate Angle Adjustable 18-24 Wide Extension Mount/ELR PAIR Assembly	1
2a, 3, 4b, 5-12	502184	Footplate Kit Angle Adjustable w/ Heel Loop for Ext. Mount Hanger 14-15 Wide Left <i>Heel Loop with attaching hardware is included but not pictured</i>	1
2b, 3, 4a, 5-12	502185	Footplate Kit Angle Adjustable w/ Heel Loop for Ext. Mount Hanger 14-15 Wide Right <i>Heel Loop with attaching hardware is included but not pictured</i>	1
2a, 2b, 3, 4a, 4b, 5-12	502186	Footplate Kit Angle Adjustable w/ Heel Loop for Ext. Mount Hanger 14-15 Wide Pair <i>Heel Loop with attaching hardware is included but not pictured</i>	1
2c, 3, 4b, 5-12	502187	Footplate Kit Angle Adjustable w/ Heel Loop for Ext. Mount Hanger 16-17 Wide Left <i>Heel Loop with attaching hardware is included but not pictured</i>	1
2d, 3, 4a, 5-12	502188	Footplate Kit Angle Adjustable w/ Heel Loop for Ext. Mount Hanger 16-17 Wide Right <i>Heel Loop with attaching hardware is included but not pictured</i>	1
2c, 2d, 3, 4a, 4b, 5-12	502189	Footplate Kit Angle Adjustable w/ Heel Loop for Ext. Mount Hanger 16-17 Wide Pair <i>Heel Loop with attaching hardware is included but not pictured</i>	1
2e, 3, 4b, 5-12	502190	Footplate Kit Angle Adjustable w/ Heel Loop for Ext. Mount Hanger 18-24 Wide Left <i>Heel Loop with attaching hardware is included but not pictured</i>	1
2f, 3, 4a, 5-12	502191	Footplate Kit Angle Adjustable w/ Heel Loop for Ext. Mount Hanger 18-24 Wide Right	1

Item Number	Part Number	Description	Quantity
		<i>Heel Loop with attaching hardware is included but not pictured</i>	
2e, 2f, 3, 4a, 4b, 5-12	502192	Footplate Kit Angle Adjustable w/ Heel Loop for Ext. Mount Hanger 18-24 Wide Pair <i>Heel Loop with attaching hardware is included but not pictured</i>	1
1a	001304	Footplate Angle Adjustable 10-11" Wide CAT/TILT Left	1
1b	001305	Footplate Angle Adjustable 10-11" Wide CAT/TILT Right	1
1c	001306	Footplate Angle Adjustable 12-13" Wide CAT/TILT Left	1
1d	001307	Footplate Angle Adjustable 12-13" Wide CAT/TILT Right	1
2a	000105	Footplate Angle Adjustable 14-15" Wide CAT/TILT Left (Std ELR Right)	1
2b	000106	Footplate Angle Adjustable 14-15" Wide CAT/TILT Right (Std ELR Left)	1
2c	000107	Footplate Angle Adjustable 16-17" Wide CAT/TILT Left (Std ELR Right)	1
2d	000108	Footplate Angle Adjustable 16-17" Wide CAT/TILT Right (Std ELR Left)	1
2e	000109	Footplate Angle Adjustable 18-24" Wide CAT/TILT Left (Std ELR Right)	1
2f	000110	Footplate Angle Adjustable 18-24" Wide CAT/TILT Right (Std ELR Left)	1
3	100502	Angle Adj Footplate Clamp 2"	1
4a	000047	Footplate Angle Adjustable Casting 3/4 Right	1
4b	000049	Footplate Angle Adjustable Casting 3/4" Left	1
5	101472	M6 x 45 SHCS BLK ZC	1
6	101455	M6 Belleville Washer (.252 x .551 x .050)	1
7	000428	Wear Washer	1
8	000053	Saddle 3/4"	2
9	100746	M6 Flat Washer Blk Zn	1
10	120030	M6 Top Lock Nut	1
11	100662	M6 x 25 FSHCS BLK ZC	2
12	100658	M6 Nylock Nut Blk Zn	2