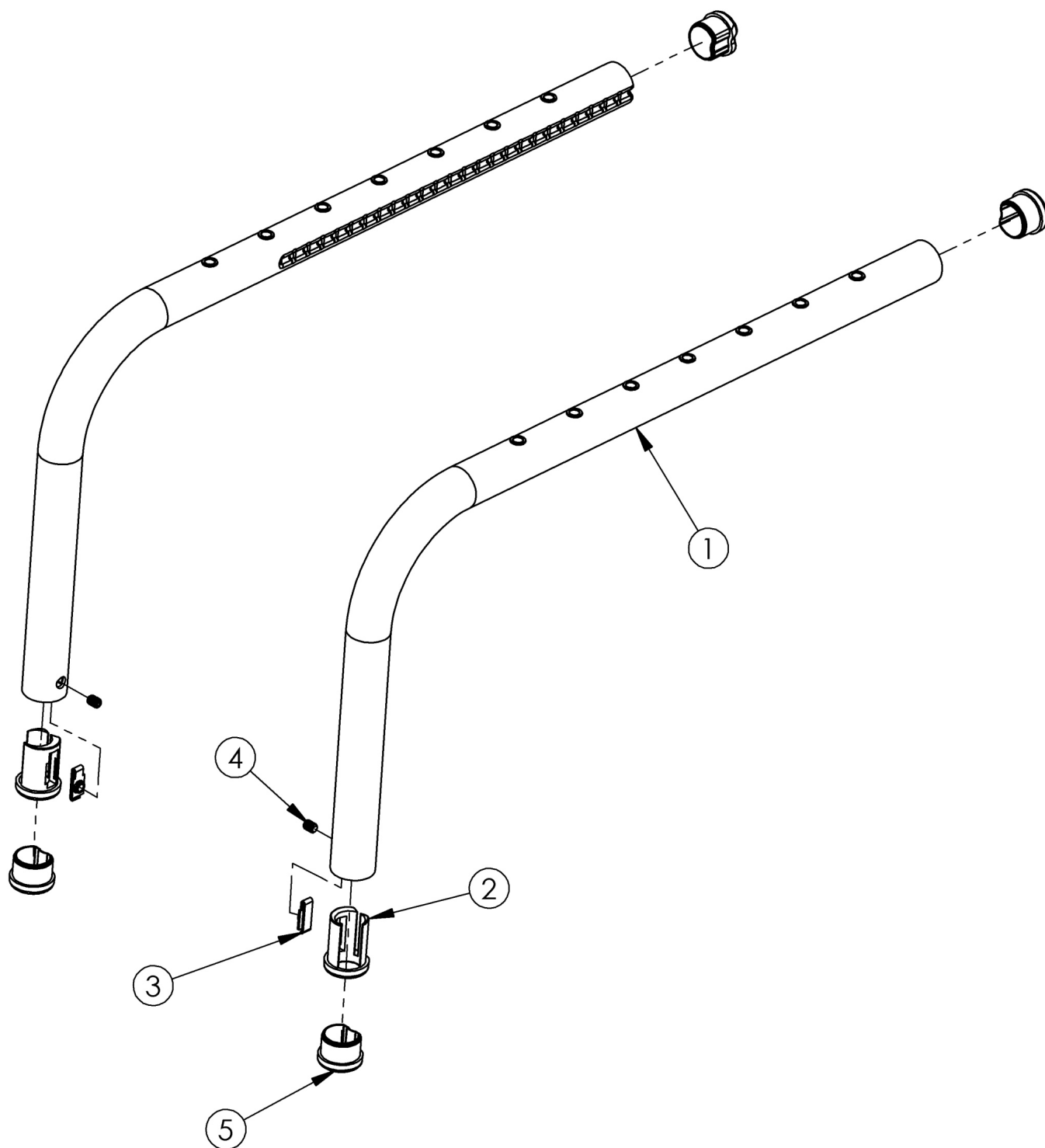


# Clik Side Frame



*This design effective starting with serial numbers CLK005270. Drilled Clik Side Frames effective April 13, 2018. <p> Replacement side frames may be quoted, but must be ordered through Customer Service. Serial number required upon order.<p> Item numbers 2-4 are only needed when footrest is not high mounted and these parts are included with replacement side frames if footrest is not high mounted.*

Item Number	Part Number	Description	Quantity	Retail
1a, 5	RFCLLS	Replacement Little Wave Klik Side Frame Left	1	\$280.50
1b, 5	RFCLRS	Replacement Little Wave Klik Side Frame Right	1	\$280.50
1a, 1b, 5	RFCLPR	Replacement Little Wave Klik Side Frame PAIR	1	\$561.00
1c, 5	RFCLGITLS	Replacement Little Wave Klik Side Frame w/ Graphic Image Transfer Left	1	\$583.95
1d, 5	RFCLGITRS	Replacement Little Wave Klik Side Frame w/ Graphic Image Transfer Right	1	\$583.95
1c, 1d, 5	RFCLGITPR	Replacement Little Wave Klik Side Frame w/ Graphic Image Transfer PAIR	1	\$1,167.90
2-4	506824	Frame Inserted Footrest Hardware Kit, Pair, Klik	1	\$15.52
2a	002797	Footrest Insert Right	1	\$9.46
2b	002799	Footrest Insert Left	1	\$9.46
3	002798	Footrest Screw Plate	2	\$8.40
4	102090	M6 Set Screw Flat Point	2	\$2.63
5	002791	Seat Tube End Cap <i>Use quantity 4 with high-mounted footrests</i>	2	\$1.58