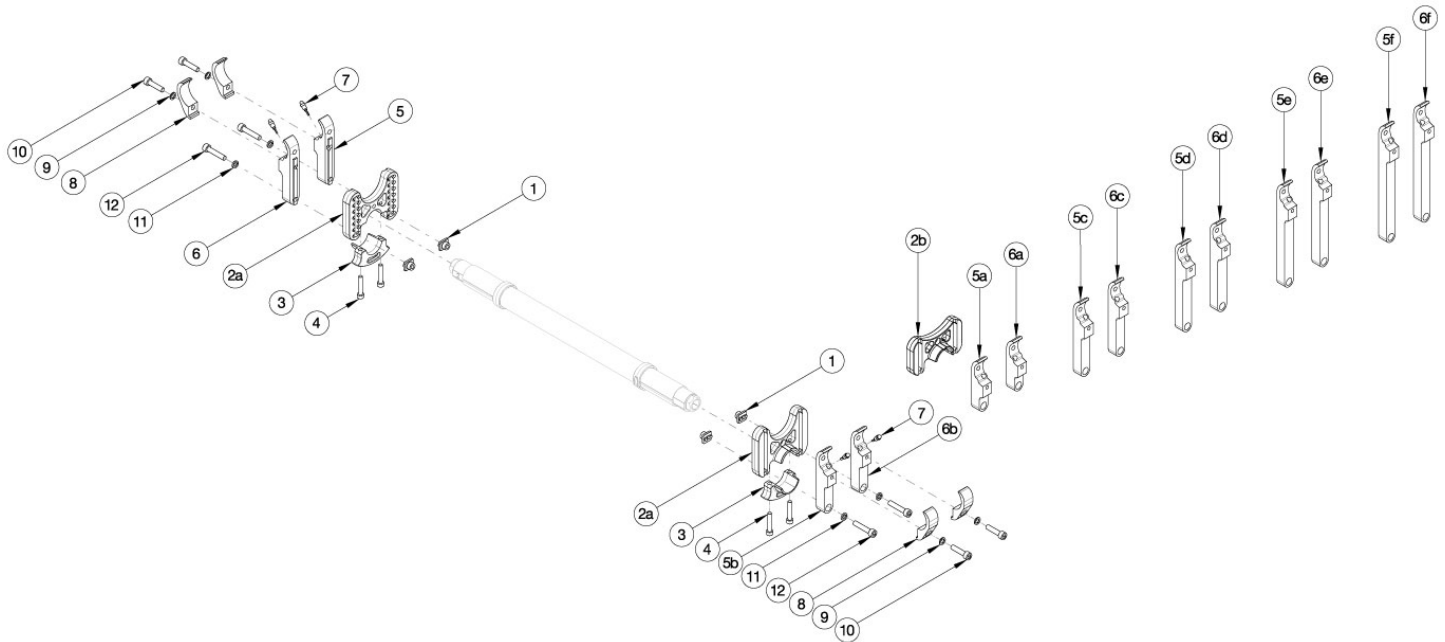


# Rogue2 Standard Camber Mount



\*\*\*Please contact Customer Service if "Rear Inner Tower Clamps" or "Rear Tower Assemblies" are needed.\*\*\* If ordering "Rear Inner Tower Clamps", detent buttons (001788) are required. Used when center of gravity is between 0.5" and 5".

Item Number	Part Number	Description	Quantity
1, 2a, 3, 4, 8a-12	117500	Rear Tower Assembly Standard (114205), Black, Single, Rogue2	1
1, 2a, 3, 4, 8b-12	117500_ _ _	Rear Tower Assembly Standard (114205), Anodized, Single, Rogue2	1
1, 2a, 3, 4, 8a-12	117502	Rear Tower Assembly Standard (114205), Black, Pair, Rogue2	1
1, 2a, 3, 4, 8b-12	117502_ _ _	Rear Tower Assembly Standard (114205), Anodized, Pair, Rogue2	1
1, 2b, 3, 4, 8a-12	117501	Rear Tower Assembly Short (114011), Black, Single, Rogue2	1
1, 2b, 3, 4, 8b-12	117501_ _ _	Rear Tower Assembly Short (114011), Black, Single, Rogue2	1
1, 2b, 3, 4, 8a-12	117503	Rear Tower Assembly Short (114011), Black, Pair, Rogue2	1
1, 2b, 3, 4, 8b-12	117503_ _ _	Rear Tower Assembly Short (114011), Black, Pair, Rogue2	1
4	114015	SHCS, M5X0.8X30, Cls12.9, Blz, DIN 912	2
5a	114004	Rear Tower Inner Index Clamp 2.125", Black, Right	2
5a	114004_ _ _	Rear Tower Inner Index Clamp 2.125", Anodized, Right	2
5b	114005	Rear Tower Inner Index Clamp 2.875", Black, Right	2
5b	114005_ _ _	Rear Tower Inner Index Clamp 2.875", Anodized, Right	2

Item Number	Part Number	Description	Quantity
5c	114006	Rear Tower Inner Index Clamp 3.625, Black, Right	2
5c	114006_ _ _	Rear Tower Inner Index Clamp 3.625, Anodized, Right	2
5d	114007	Rear Tower Inner Index Clamp 4.500", Black, Right	2
5d	114007_ _ _	Rear Tower Inner Index Clamp 4.500", Anodized, Right	2
5e	114008	Rear Tower Inner Index Clamp 5.375", Black, Right	2
5e	114008_ _ _	Rear Tower Inner Index Clamp 5.375", Anodized, Right	2
5f	114009	Rear Tower Inner Index Clamp 6.250", Black, Right	2
5f	114009_ _ _	Rear Tower Inner Index Clamp 6.250", Anodized, Right	2
6a	114034	Rear Tower Inner Index Clamp 2.125", Black, Left	2
6a	114034_ _ _	Rear Tower Inner Index Clamp 2.125", Anodized, Left	2
6b	114035	Rear Tower Inner Index Clamp 2.875", Black, Left	2
6b	114035_ _ _	Rear Tower Inner Index Clamp 2.875", Anodized, Left	2
6c	114036	Rear Tower Inner Index Clamp 3.625, Black, Left	2
6c	114036_ _ _	Rear Tower Inner Index Clamp 3.625, Anodized, Left	2
6d	114037	Rear Tower Inner Index Clamp 4.500", Black, Left	2
6d	114037_ _ _	Rear Tower Inner Index Clamp 4.500", Anodized, Left	2
6e	114038	Rear Tower Inner Index Clamp 5.375", Black, Left	2
6e	114038_ _ _	Rear Tower Inner Index Clamp 5.375", Anodized, Left	2
6f	114039	Rear Tower Inner Index Clamp 6.250", Black, Left	2
6f	114039_ _ _	Rear Tower Inner Index Clamp 6.250", Anodized, Left	2
7	001788	Button Assembly	2
8a	114003	Rear Tower Outer Clamp, Black	4
8b	114003_ _ _	Rear Tower Outer Clamp, Anodized	4
9	102326	Flat Washer ID .254" x OD .396" Thickness .047" Zinc	2
10	100780	M6 x 25 SHCS ZC	2
11	102810	M6 Lockwasher, Hi-Collar, ZC	2
12	102627	M6 X 30 SHCS BLK ZC	2