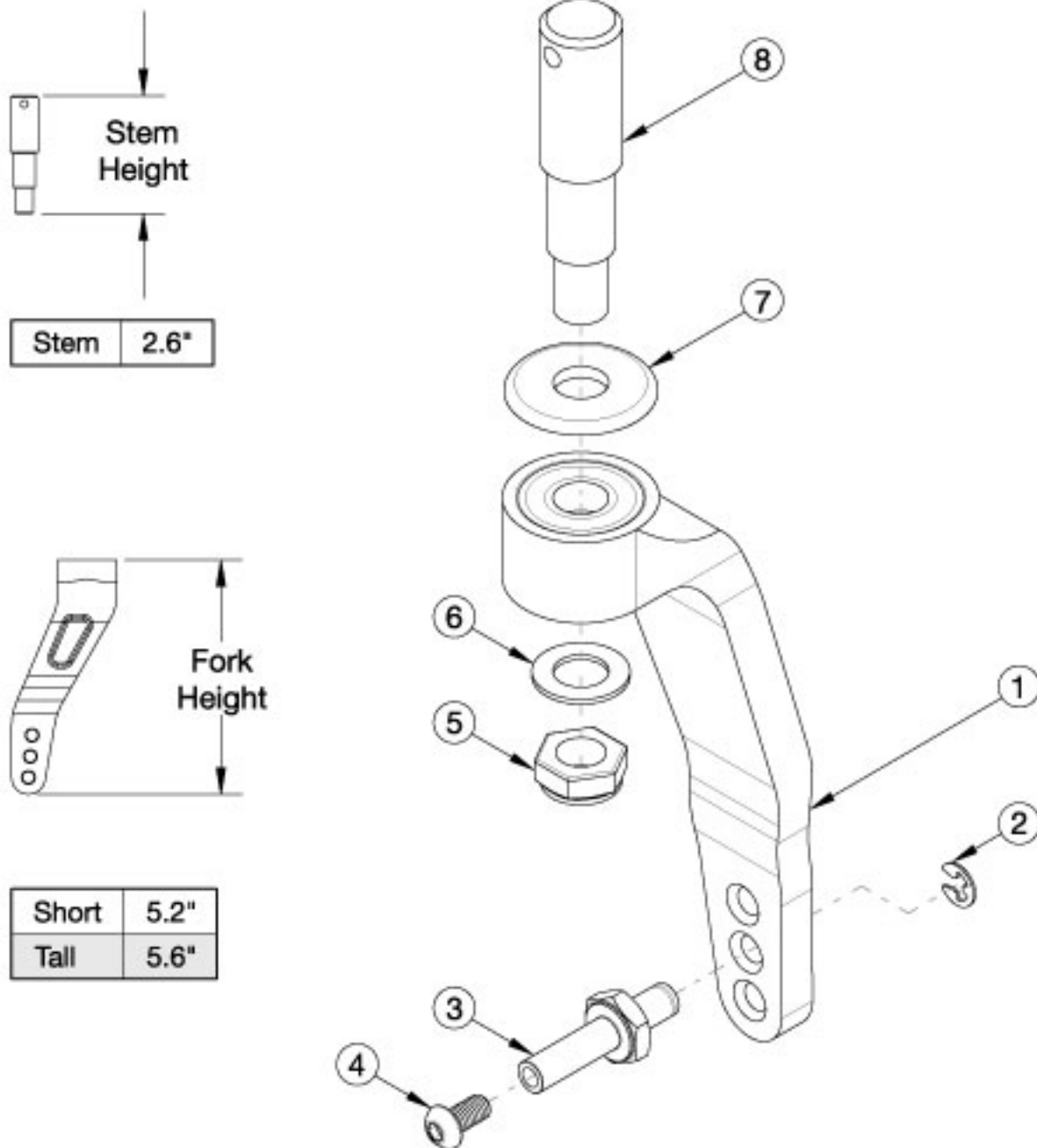


# Rogue2 Single Sided Fork



Use a short fork when a 3-5" caster is present. Use a tall fork when a 6" caster is present.

Item Number	Part Number	Description	Quantity
1a, 2-4, 7a	501800	Caster Fork Single Sided Short Right Black Anodized	1
1a, 2-4, 7b	501800_ _ _	Caster Fork Single Sided Short Right Color Anodized	1
1b, 2-4, 7a	501801	Caster Fork Single Sided Short Left Black Anodized	1

Item Number	Part Number	Description	Quantity
1b, 2-4, 7b	501801_ _ _	Caster Fork Single Sided Short Left Color Anodized	1
1c, 2-4, 7a	501802	Caster Fork Single Sided Tall Right Black Anodized	1
1c, 2-4, 7b	501802_ _ _	Caster Fork Single Sided Tall Right Color Anodized	1
1d, 2-4, 7a	501803	Caster Fork Single Sided Tall Left Black Anodized	1
1d, 2-4, 7b	501803_ _ _	Caster Fork Single Sided Tall Left Color Anodized	1
5, 6, 8	117596	Single Sided Stem Assembly, Rogue2	1
2-4	501799	Single Sided Axle Assembly	1
2	102364	Side-Mount External Retaining Ring (E-Style) Black-Finish Steel	1
3	001354	Axle Shaft for Single Sided Fork	1
4	100667	M6 x 12 BTN SHCS BLKZC w/Patch	1
5	101840	M10 Nylock Nut Blk Zn	1
6	101859	M10 Flat Washer Blk Zn	1
7a	001355	Caster Bearing Cap Black Anodized	1
7b	001355_ _ _	Color Anodized Caster Bearing Cap	1

# Color Anodizing Samples

