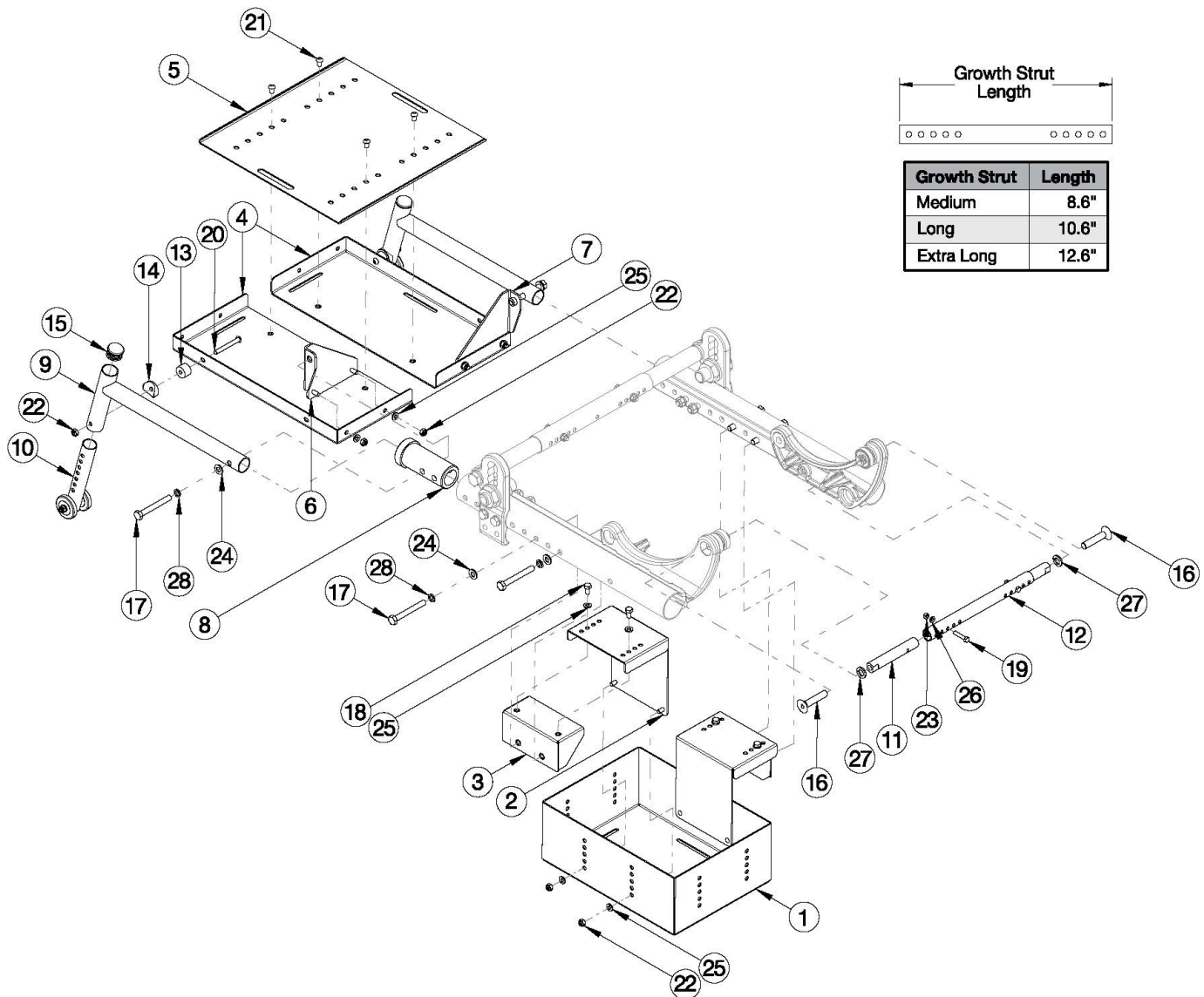


Focus CR Vent and Battery Tray



Vent Tray assemblies are chair width dependent and are 3.5" less than chair width x 14" length x 1" depth. Battery Trays are 8.5" W x 11.25" L x 4.25" D and are rotated 90° when chair is 19" or wider. Minimum chair width 16".

Item Number	Part Number	Description	Quantity
8-10, 13-15, 17, 20, 22, 24	506840	Focus CR Vent Tray Anti-Tip <i>Includes parts for 1 side</i>	1
1, 2, 3a, 4 - 11, 12a, 13 - 28	116859	Vent and Battery Tray Assm Short TILT <i>Used on 16" - 18" width with Small Frame Width Range</i>	1
1, 2, 3a, 4 - 11, 12b, 13 - 28	501436	Vent and Battery Tray Assm Medium TILT	1
1, 2, 3a, 4 - 11, 12c, 13 - 28	501437	Vent and Battery Tray Assm Large TILT	1

Item Number	Part Number	Description	Quantity
1, 2, 3b, 4 - 11, 12d, 13 - 28	114277	Vent and Battery Tray Assm X-Large TILT	1
1, 2, 3a, 11, 12a, 17 - 19, 22 - 28	116860	Battery Tray Assm Short TILT <i>Used on 16" - 18" width with Small Frame Width Range</i>	1
1 - 3a, 11, 12b, 17 - 19, 22 - 28	501438	Battery Tray Assm Medium TILT	1
1 - 3a, 11, 12c, 17 - 19, 22 - 28	501439	Battery Tray Assm Large TILT	1
1, 2, 3b, 11, 12d, 17 - 19, 22 - 28	114278	Battery Tray Assm X-Large TILT	1
4 - 10, 13 - 15, 17, 20 - 22, 24, 25, 28	501440	Vent Tray Assm TILT	1
1	001285	Battery Tray U1 TILT	1
2	001286	Battery Tray Hanger TILT	2
3	112006	Battery Tray Mount Extended Range, Frame, TILT	2
4	001288	Vent Tray TILT	2
5	001289	Vent Tray Growth Plate TILT	1
6	001290	Vent Tray Hanger Right TILT	1
7	001291	Vent Tray Hanger Left TILT	1
8	001292	Vent Tray Mount Bushing TILT	2
9	001293	Vent Tray Support TILT	2
10	001170	Anti-Tip Lower Extension Assembly, Focus	2
11	001300	Strut End HD TILT	2
12a	001030	Growth Strut Rotary Short TILT	1
12b	001031	Growth Strut Rotary Medium TILT	1
12c	001032	Growth Strut Rotary Long TILT	1
12d	112004	Growth Strut Rotary X-Long TILT	1
13	102047	Spacer, .25ID x .75OD x .50LG	2
14	000055	Saddle 1"	2
15	100804	Tube End Plug 1"	2
16	101816	M10 x 50 FHCS Blk Zn	2
17	101829	M8 x 65 HHCS Blk Zn	6

Item Number	Part Number	Description	Quantity
18	101822	M6 x 12 HHCS BLKZC w/Patch	4
19	101821	M5 x 25 HHCS Blk Zn	2
20	101781	M6 x 50mm Partial Thread BHCS Blk ZC	2
21	101184	M6 x 10 BTN SHCS BLKZC w/Patch	4
22	100658	M6 Nylock Nut Blk Zn	10
23	100657	M5 Nylock Nut Blk Zn	2
24	101858	Washer Flat M8 Blk Zn	6
25	100746	M6 Flat Washer Blk Zn	12
26	101856	Flat Washer, M5, Blk Zn	2
27	102337	Lockwasher, M10, Blk Zn	2
28	101834	M8 Hi-Collar Lockwasher Blk Zn	6