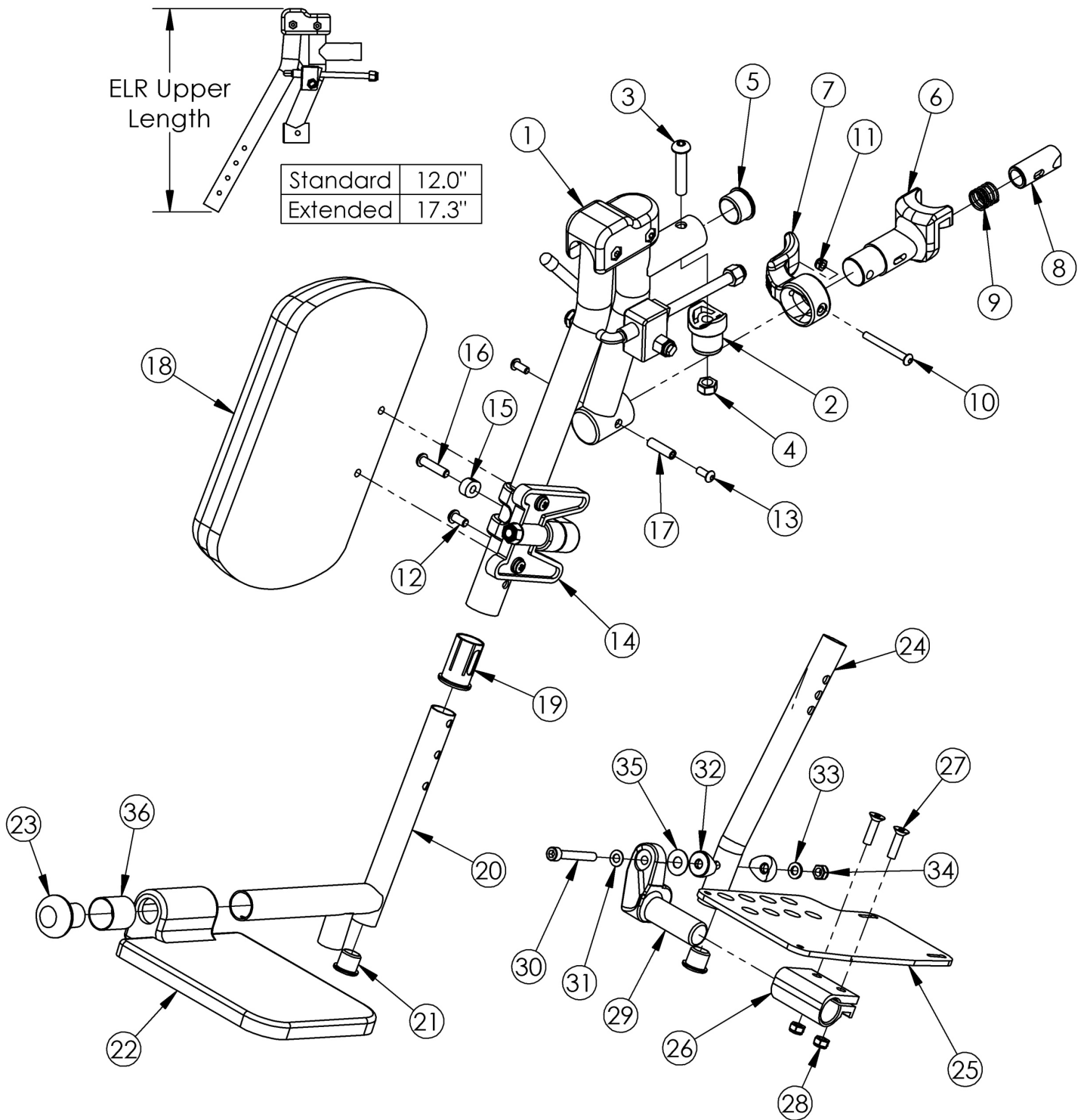


Focus Elevating Leg Rest (Discontinued)



The ELR assemblies on this page are discontinued. Please see the Elevating Leg Rest page for current assemblies.
 <p>Small composite footplates are used on 14-16" seat widths. Large composite footplates are used on 17-22" seat widths.
 <p>Sizes for assemblies are based on seat width with straight frame; if Tilt chair has Offset Frame, add 2" to seat width.

Item Number	Part Number	Description	Quantity	Retail
1a, 1b, 2-17, 18b, 19, 20b, 21, 22a, 23, 36	501284	ELR Assm 14 Comp FP Long Ext PAIR	1	\$487.39
1a, 1b, 2-17, 18b, 19, 20a, 21, 22a, 23, 36	501285	ELR Assm 14 Comp FP Short Ext PAIR	1	\$487.39
1a, 1b, 2-17, 18a, 19, 20b, 21, 22a, 23, 36	501286	ELR Assm 15/16 Small Comp FP Long Ext PAIR	1	\$487.39
1a, 1b, 2-17, 18a, 19, 20a, 21, 22a, 23, 36	501287	ELR Assm 15/16 Small Comp FP Short Ext PAIR	1	\$487.39
1a, 1b, 2-17, 18a, 19, 20b, 21, 22b, 23	501288	ELR Assm 17-22 Large Comp FP Long Ext PAIR	1	\$487.39
1a, 1b, 2-17, 18a, 19, 20a, 21, 22b, 23	501289	ELR Assm 17-22 Large Comp FP Short Ext PAIR	1	\$487.39
1a, 2-17, 18b, 19, 20b, 21, 22a, 23, 36	501290	ELR Assm 14 Comp FP Long Ext Right	1	\$243.70
1a, 2-17, 18b, 19, 20a, 21, 22a, 23, 36	501291	ELR Assm 14 Comp FP Short Ext Right	1	\$243.70
1a, 2-17, 18a, 19, 20b, 21, 22a, 23, 36	501292	ELR Assm 15/16 Small Comp FP Long Ext Right	1	\$243.70
1a, 2-17, 18a, 19, 20a, 21, 22a, 23, 36	501293	ELR Assm 15/16 Small Comp FP Short Ext Right	1	\$243.70
1a, 2-17, 18a, 19, 20a, 21, 22b, 23	501294	ELR Assm 17-22 Large Comp FP Short Ext Right	1	\$243.70
1a, 2-17, 18a, 19, 20b, 21, 22b, 23	501295	ELR Assm 17-22 Large Comp FP Long Ext Right	1	\$243.70
1b, 2-17, 18b, 19, 20b, 21, 22a, 23, 36	501296	ELR Assm 14 Comp FP Long Ext Left	1	\$243.70
1b, 2-17, 18b, 19, 20a, 21, 22a, 23, 36	501297	ELR Assm 14 Comp FP Short Ext Left	1	\$243.70
1b, 2-17, 18a, 19, 20b, 21, 22a, 23, 36	501298	ELR Assm 15/16 Small Comp FP Long Ext Left	1	\$243.70
1b, 2-17, 18a, 19, 20a, 21, 22a, 23, 36	501299	ELR Assm 15/16 Small Comp FP Short Ext Left	1	\$243.70
1b, 2-17, 18a, 19, 20a, 21, 22b, 23	501300	ELR Assm 17-22 Large Comp FP Short Ext Left	1	\$243.70
1b, 2-17, 18a, 19, 20b, 21, 22b, 23	501301	ELR Assm 17-22 Large Comp FP Long Ext Left	1	\$243.70
1d, 2-17, 18b, 19	501555	Extended Length ELR Assm Upper 14 Left	1	\$436.95

Item Number	Part Number	Description	Quantity	Retail
1c, 2-17, 18b, 19	501556	Extended Length ELR Assm Upper 14 Right	1	\$436.95
1d, 2-17, 18a, 19	501557	Extended Length ELR Assm Upper Left	1	\$436.95
1c, 2-17, 18a, 19	501558	Extended Length ELR Assm Upper Right	1	\$436.95
1c, 1d, 2-17, 18b, 19, 20b, 21, 22a, 23, 36	501513	Extended Length ELR Assm 14 Comp FP Long Ext PAIR	1	\$552.99
1c, 1d, 2-17, 18b, 19, 20a, 21, 22a, 23, 36	501514	Extended Length ELR Assm 14 Comp FP Short Ext PAIR	1	\$552.99
1c, 1d, 2-17, 18a, 19, 20b, 21, 22a, 23, 36	501515	Extended Length ELR Assm 15/16 Small Comp FP Long Ext PAIR	1	\$552.99
1c, 1d, 2-17, 18a, 19, 20a, 21, 22a, 23, 36	501516	Extended Length ELR Assm 15/16 Small Comp FP Short Ext PAIR	1	\$552.99
1c, 1d, 2-17, 18a, 19, 20b, 21, 22b, 23	501517	Extended Length ELR Assm 17-22 Large Comp FP Long Ext PAIR	1	\$552.99
1c, 1d, 2-17, 18a, 19, 20a, 21, 22b, 23	501518	Extended Length ELR Assm 17-22 Large Comp FP Short Ext PAIR	1	\$552.99
1c, 2-17, 18b, 19, 20b, 21, 22a, 23, 36	501519	Extended Length ELR Assm 14 Comp FP Long Ext Right	1	\$309.30
1c, 2-17, 18b, 19, 20a, 21, 22a, 23, 36	501520	Extended Length ELR Assm 14 Comp FP Short Ext Right	1	\$309.30
1c, 2-17, 18a, 19, 20b, 21, 22a, 23, 36	501521	Extended Length ELR Assm 15/16 Small Comp FP Long Ext Right	1	\$309.30
1c, 2-17, 18a, 19, 20a, 21, 22a, 23, 36	501522	Extended Length ELR Assm 15/16 Small Comp FP Short Ext Right	1	\$309.30
1c, 2-17, 18a, 19, 20a, 21, 22b, 23	501523	Extended Length ELR Assm 17-22 Large Comp FP Short Ext Right	1	\$309.30
1c, 2-17, 18a, 19, 20b, 21, 22b, 23	501524	Extended Length ELR Assm 17-22 Large Comp FP Long Ext Right	1	\$309.30
1d, 2-17, 18b, 19, 20b, 21, 22a, 23, 36	501525	Extended Length ELR Assm 14 Comp FP Long Ext Left	1	\$309.30
1d, 2-17, 18b, 19, 20a, 21, 22a, 23, 36	501526	Extended Length ELR Assm 14 Comp FP Short Ext Left	1	\$309.30
1d, 2-17, 18a, 19, 20b, 21, 22a, 23, 36	501527	Extended Length ELR Assm 15/16 Small Comp FP Long Ext Left	1	\$309.30
1d, 2-17, 18a, 19, 20a, 21, 22a, 23, 36	501528	Extended Length ELR Assm 15/16 Small Comp FP Short Ext Left	1	\$309.30

Item Number	Part Number	Description	Quantity	Retail
1d, 2-17, 18a, 19, 20a, 21, 22b, 23	501529	Extended Length ELR Assm 17-22 Large Comp FP Short Ext Left	1	\$309.30
1d, 2-17, 18a, 19, 20b, 21, 22b, 23	501530	Extended Length ELR Assm 17-22 Large Comp FP Long Ext Left	1	\$309.30
1b, 2-17, 18b, 19	501326	ELR Assm Upper 14 Left	1	\$371.33
1a, 2-17, 18b, 19	501327	ELR Assm Upper 14 Right	1	\$371.33
1b, 2-17, 18a, 19	501328	ELR Assm Upper Left	1	\$371.33
1a, 2-17, 18a, 19	501329	ELR Assm Upper Right	1	\$371.33
1a	500553-R	ELR Upper Standard Length Right	1	\$166.19
1b	500553L	ELR Upper Standard Length Left	1	\$166.19
1c	500601R	ELR Upper Extended Length Right	1	\$212.34
1d	500601L	ELR Upper Extended Length Left	1	\$212.34
2	000032	Footrest Hanger Pivot Saddle	1	\$5.25
3	100673	M8 x 45 BTN SHCS BLKZC	1	\$1.58
4	100659	M8 Nylock Nut Blk Zn	1	\$1.05
5	100804	Tube End Plug 1"	1	\$1.58
6	000031	Hanger Bracket	1	\$23.73
7	001158	Lever Swing Away Short	1	\$7.31
9	000119	Hanger Spring	1	\$3.05
10	001374	M5 x 40 BHCS P/THD BLKZC	1	\$2.14
11	100657	M5 Nylock Nut Blk Zn	1	\$0.53
12	100667	M6 x 12 BTN SHCS BLKZC w/Patch	1	\$1.58
13	100669	M5 x 10 BTN SHCS BLKZC w/Patch	2	\$1.58
14	101193	Calf Pad Mount Assembly	1	\$23.21
15	000556	ELR Index Spacer	1	\$0.58
16	100668	M6 x 20 CLS10.9 BTN SHCS ZC w/Patch	1	\$1.58
17	000073	M5 x 24 Threaded Barrel	1	\$3.78
18a	101585	Calf Pad	1	\$20.07

Item Number	Part Number	Description	Quantity	Retail
18b	101470	Pediatric Calf Pad	1	\$26.27
19	000034	Sleeve 3/4" x 1 1/2"	1	\$3.66
20a	000538	Footrest Extension Tube ELR Short	1	\$29.48
20b	000539	Footrest Extension Tube ELR Long	1	\$29.48
21	100638	Tube End Plug 3/4"	1	\$2.10
22a	101582	Footplate ELR Composite Small	1	\$52.22
23	101586	ELR Footrest Bumper	1	\$3.59
25a	000105	Footplate Angle Adjustable 14-15" Wide CAT/TILT Left (Std ELR Right)	1	\$63.36
25b	000106	Footplate Angle Adjustable 14-15" Wide CAT/TILT Right (Std ELR Left)	1	\$63.36
25c	000107	Footplate Angle Adjustable 16-17" Wide CAT/TILT Left (Std ELR Right)	1	\$63.36
25d	000108	Footplate Angle Adjustable 16-17" Wide CAT/TILT Right (Std ELR Left)	1	\$63.36
25e	000109	Footplate Angle Adjustable 18-24" Wide CAT/TILT Left (Std ELR Right)	1	\$63.36
25f	000110	Footplate Angle Adjustable 18-24" Wide CAT/TILT Right (Std ELR Left)	1	\$63.36
26	100502	Angle Adj Footplate Clamp 2"	1	\$13.23
27	100662	M6 x 25 FSHCS BLK ZC	2	\$1.58
28	100658	M6 Nylock Nut Blk Zn	2	\$1.05
29a	000047	Footplate Angle Adjustable Casting 3/4" Right	1	\$20.10
29b	000049	Footplate Angle Adjustable Casting 3/4" Left	1	\$20.10
30	101472	M6 x 45 SHCS BLK ZC	1	\$1.58
31	101455	M6 Belleville Washer (.252 x .551 x .050)	1	\$1.58
32	000053	Saddle 3/4"	2	\$1.58
33	100746	M6 Flat Washer Blk Zn	1	\$1.58
34	101456	M6 Ovl Top L/N ZC	1	\$1.58
35	000428	Wear Washer	1	\$2.63
36	000621	ELR Spacer Small Footplate <i>Only used with small composite footplate</i>	1	\$2.59