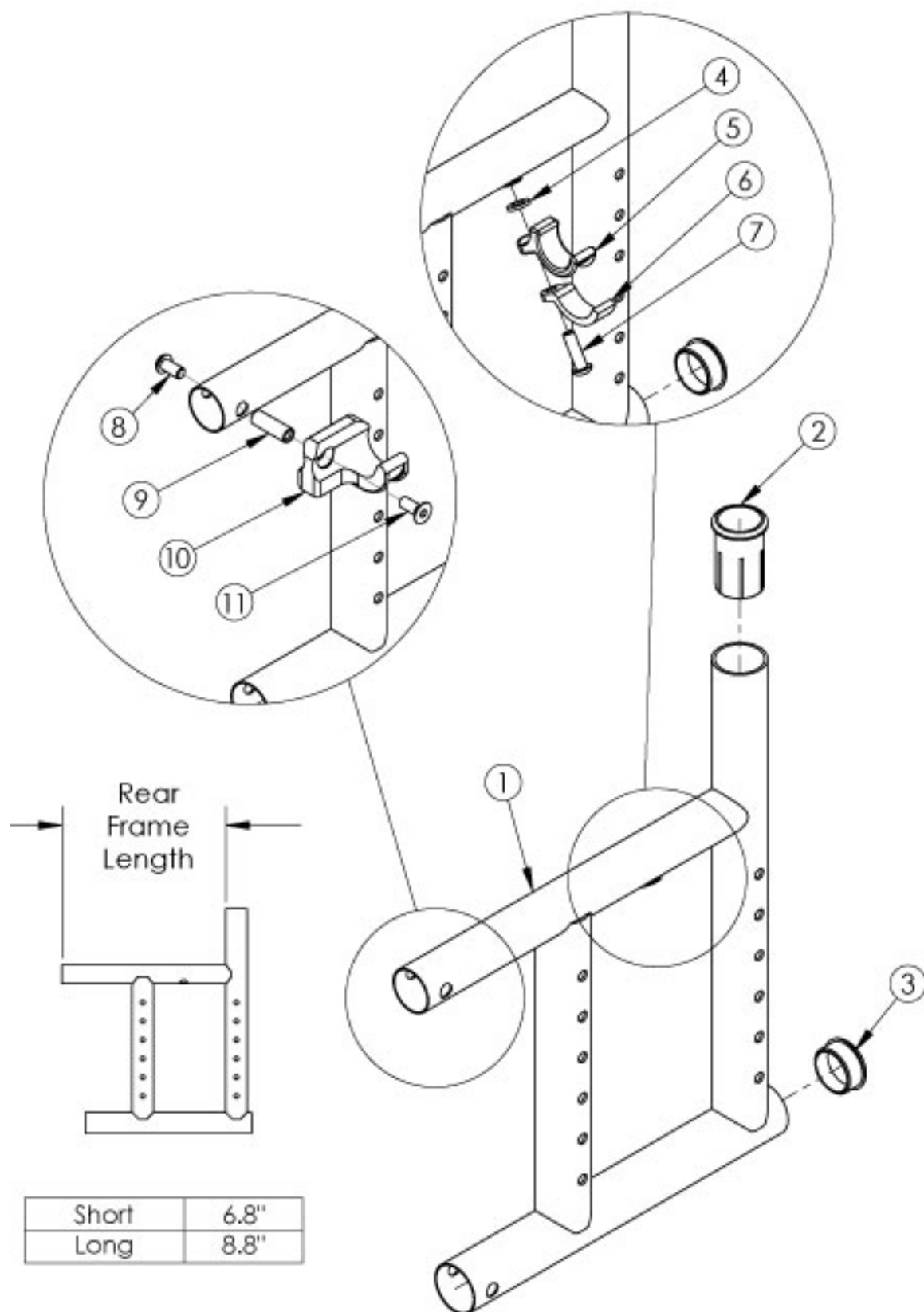


Catalyst 5Ti Rear Frame



If chair has any type of direct mount side guards, select a frame assembly with Side Guard Mount Modification. Use the short frame for 14-17" Seat Depths. Use long the frame for 18-20" Seat Depths. If switching to a new Seat Depth, new Height Adjustable Flip Back T-Arms may be required.

Item Number	Part Number	Description	Quantity
4, 5, 6, 7a	501005	Seat Hook and Support Hardware Kit, Standard, Catalyst <i>Used with Standard Weight Capacity. This kit contains quantity of 1 each</i>	1
4, 5, 6, 7b	114528	Seat Hook and Support Hardware Kit, Standard, for Heavy Duty Catalyst <i>Used with Heavy Duty / 350 lbs Weight Capacity. This kit contains quantity of 1 each</i>	1
1c, 2, 3	100277	Frame Assm Cat TI Rear Left Short	1
1a, 2, 3	100275	Frame Assm Cat TI Rear Right Short	1
1a, 2, 3	123156	Frame Assm Cat TI Rear Right Short Not For Transit <i>Please quote when transit is not present.</i>	1
1d, 2, 3	100278	Frame Assm Cat TI Rear Left Long	1
1b, 2, 3	100276	Frame Assm Cat TI Rear Right Long	1
1b, 2, 3	123157	Frame Assm Cat TI Rear Right Long Not For Transit <i>Please quote when transit is not present.</i>	1
1c, 2, 3	114424	Frame Assm Cat TI Rear with Side Guard Mount Modification Left Short	1
1a, 2, 3	114422	Frame Assm Cat TI Rear with Side Guard Mount Modification Right Short	1
1a, 2, 3	123165	Frame Assm Cat TI Rear with Side Guard Mount Modification Right Short Not For Transit <i>Please quote when transit is not present.</i>	1
1d, 2, 3	114425	Frame Assm Cat TI Rear with Side Guard Mount Modification Left Long	1
1b, 2, 3	114423	Frame Assm Cat TI Rear with Side Guard Mount Modification Right Long	1
1b, 2, 3	123166	Frame Assm Cat TI Rear with Side Guard Mount Modification Right Long Not For Transit <i>Please quote when transit is not present.</i>	1
2	000030	Backrest Sleeve Cat	1
3	100532	Tube End Plug 1 1/8"	1
4	100831	1/2" Washer OD .040" Thick	1
5	000003	Seat Hook, Catalyst	1
6	000004	Seat Hook Support, Catalyst	1
7a	100668	M6 x 20 CLS10.9 BTN SHCS ZC w/Patch <i>Used with Standard Weight Capacity</i>	1
7b	122970	M6 x 1.0 x 20, CLS 10.9, BLZ, SHCS w/Patch	1

Item Number	Part Number	Description	Quantity
		<i>Used with Heavy Duty / 350 lbs Weight Capacity</i>	
8	100667	M6 x 12 BTN SHCS BLKZC w/Patch	1
9	000065	M6 x 23.68 Threaded Barrel	1
10a	000960R	Seat Hook Open Frame Right Front Frame / Left Rear Frame, Catalyst	1
10b	000960L	Seat Hook Open Frame Left Front Frame / Right Rear Frame, Catalyst	1
11	101594	M6 x 14 CLS10.9 DIN7991 FSHCS BLKZC w/Patch	1