



# XTENDER KIT INSTALLATION INSTRUCTIONS QUICKIE 5R/QUICKIE GT



Please read these instructions carefully before beginning the installation. Failure to understand and follow installation instructions may result in injury to installer and/or end user and may void the warranty.  
If you have any questions call Sunrise Medical Technical support at 800-333-4000

## Parts for installing the pin assembly

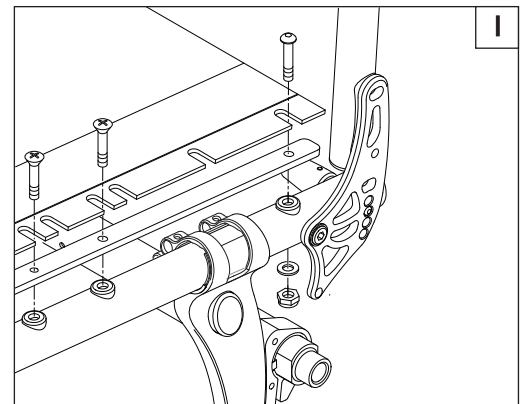
1. 2x Pin
2. 4x O-Ring
3. 2x Washer
4. 2x Standard Axle plate

## Tools needed for the complete assembly:

- |                          |                       |
|--------------------------|-----------------------|
| 1. 2mm, 5mm, 6mm hex key | 4. 2x 7/16" wrench    |
| 2. 10mm, 12mm wrench     | 5. 1x Socket wrench   |
| 3. 19mm wrench           | 6. 1x 7/16" Socket    |
|                          | 7. Needle-nose pliers |

## Xtender Mounting parts:

- |                           |                        |
|---------------------------|------------------------|
| 1. 4x large black hex nut | 8. 2x boss             |
| 2. 2x index axle washer   | 9. 2x 3" hex bolt      |
| 3. 2x stopper arm         | 10. 2x 2 3/4" hex bolt |
| 4. 2x small stopper arm   | 11. 4x 2 1/4" hex bolt |
| 5. 2x Button head screw   | 12. 8x washer          |
| 6. 4x washer plain        | 13. 8x nylock nut      |
| 7. 2x axle sleeve         | 14. 8x spacer          |



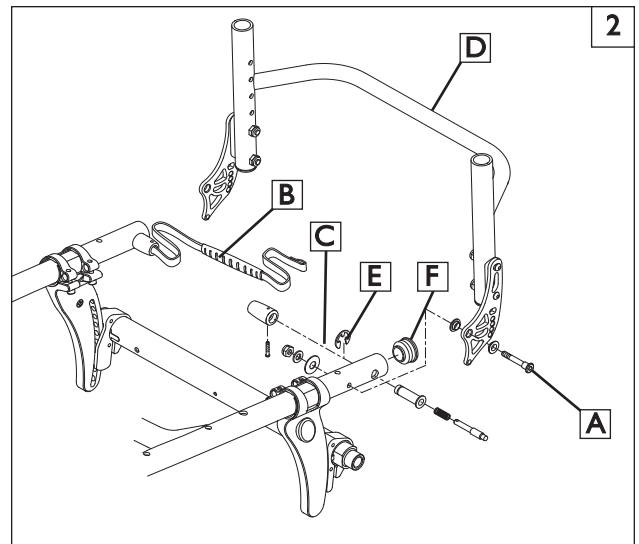
## A. PRE-INSTALLATION 1

### 1. Prep the chair

- a. Remove the wheels.
- b. Place the chair on a flat work surface or workbench for best installation results
- c. Make a mark on both sides of the frame where the center of the Camber tube lines up with the frame.
- d. Using a 10mm wrench and 4mm hex key remove the Seat sling and seat rail (Fig 1). Set the hardware aside for re-assembly.

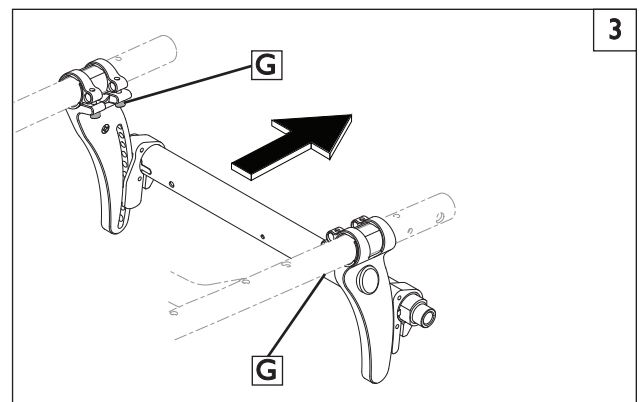
### 2. Remove the Backrest assembly 2

- a. Using a 10mm wrench and 5mm hex key, remove the backrest bracket to frame hardware (A) from both sides of the chair. Set the hardware aside for re-assembly of the backrest later.
- b. Pull on the backrest release strap (B) to release the locking pins (C) from the backrest bracket.
- c. Remove the Backrest assembly (D).
- d. Using a pair of needle-nose pliers, remove C-clip (E) from the release strap assembly. Remove the assembly and hardware, and set it aside for re-assembly.
- e. Remove the tube end-cap (F), or Swing away armrest receiver.



### 3. Remove the Axle Plate/Camber tube assembly 3

- a. Using a 4mm hex key, loosen the two socket head screws (G) on both sides of the chair, so that you can move the whole assembly.
- b. Slide the assembly carefully and evenly off of the rear chair frame.
- c. The chair is ready for installation of the Xtender unit.

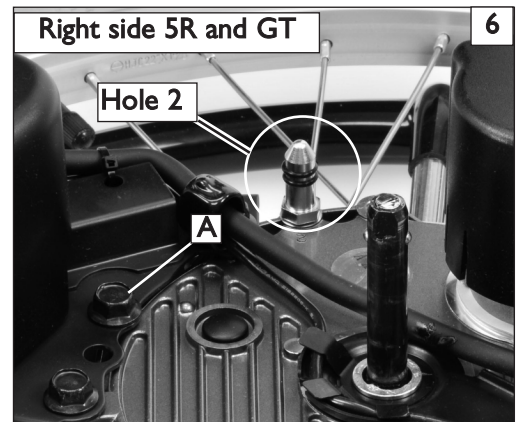
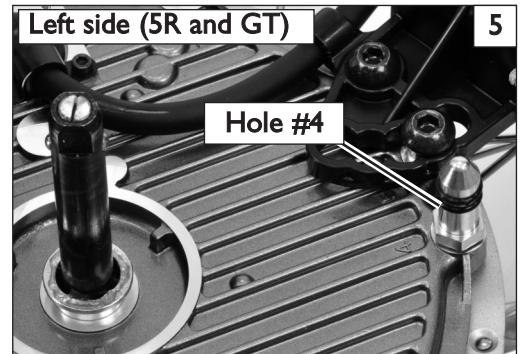
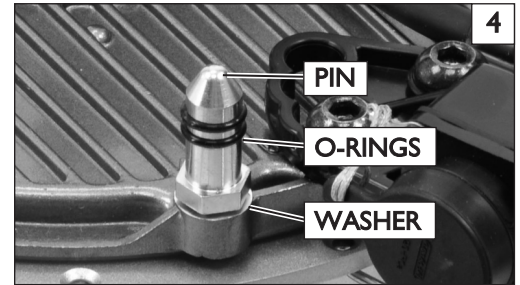


**B. PIN ASSEMBLY** 4 5 6

**NOTE**—In most cases, the Xtender kit will be shipped from the factory with the pins pre-installed in the correct position.

**Xtender guide pins for STANDARD axle plate (GT&Q5R)**

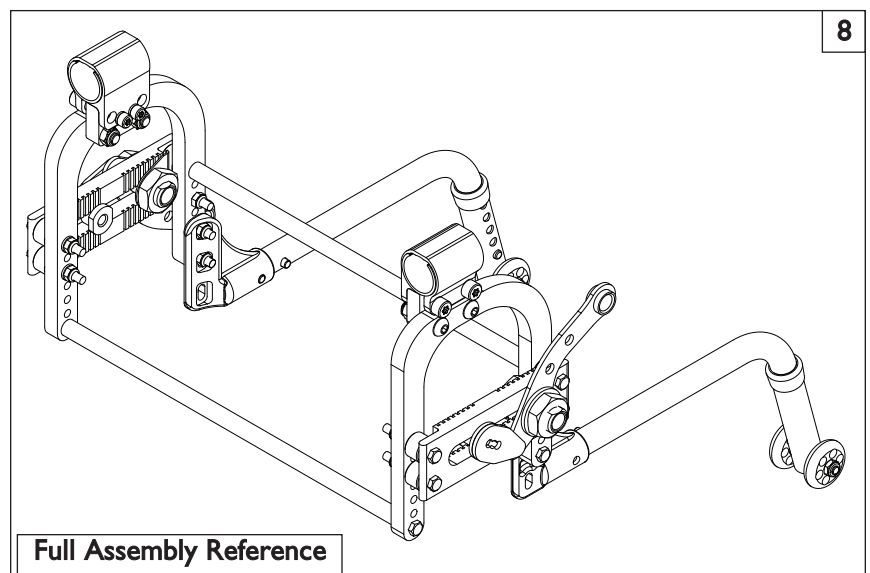
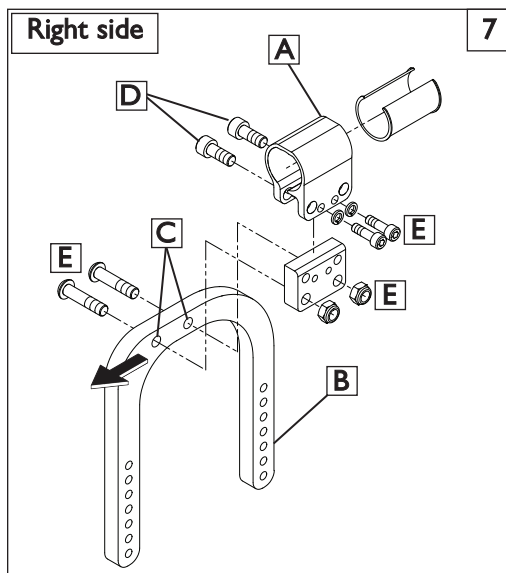
1. The Xtender hub has raised numbers by each hole to aid in the correct placement of the pins.
2. Attach the washer and O-rings to the pin as shown in (figure 1)
3. Starting on the left hub of the Xtender assembly, Install the pin assembly in hole #4 as shown in (figure 2) and hand tighten.
4. Assemble the second pin for the right hub. Install the pin assembly in hole #2 (Figure 3).
5. Use a torque wrench and 12mm socket, tighten the pins to a torque of 85 in-lbs.



**C. XTENDER MOUNTING HARDWARE** 7 8

**Assembly of Frame mounts and axle brackets:**

1. Using a 10mm wrench, and a 5mm hex key, assemble and attach frame mounts (A) to the axle plate brackets (left and right) (B). Do not fully tighten until the mounting hardware is on the frame.
2. Be sure that the axle plate brackets hole position (C) is the same orientation on both sides. The arrow in (Fig. 6) shows direction of the front of the chair.
3. Use (Fig 7) for reference to correctly assemble the mounting hardware.
4. After assembling the Right and Left side mounting assemblies (Fig. 6) slide them on the frame of the chair to the same distance from the frame tube ends.
5. Snug the Frame clamp hardware (D) (do not tighten).
6. Tighten the frame mount hardware (E)



## D. ANTI-TIPS, AXLE PLATES, AND STRUTS 9

### WARNING

Attention dealers and qualified technicians, make sure that the installed axle plate provides the same seat to floor height as the original approved setup.

1. **Install the Anti-tip receivers**
  - a. Using a 10mm wrench and socket, assemble and install the anti-tip receiver(A) and hardware (B) to the axle plate bracket (C).
  - b. Tighten the hardware to 85 in-lbs.
  - c. Install the second anti-tip receiver on the other side of the chair see (Fig 8) for reference.
2. **Install the Axle plates and struts on the left side of the chair.**
  - a. Using a 10mm wrench and socket, assemble and install the axle plate (D) and hardware (E) to the axle plate bracket (C), and strut (F).
  - b. Attach the second strut (G) and tighten the hardware to 85 in-lbs.
3. **Install the Axle plates and struts on the right side of the chair.**
  - a. Repeat steps 1 and 2 to Install the axle plates and anti-tips on the other side of the chair see (Fig 8) for reference.



## E. AXLE SLEEVES AND STOPPER ARMS 10 11

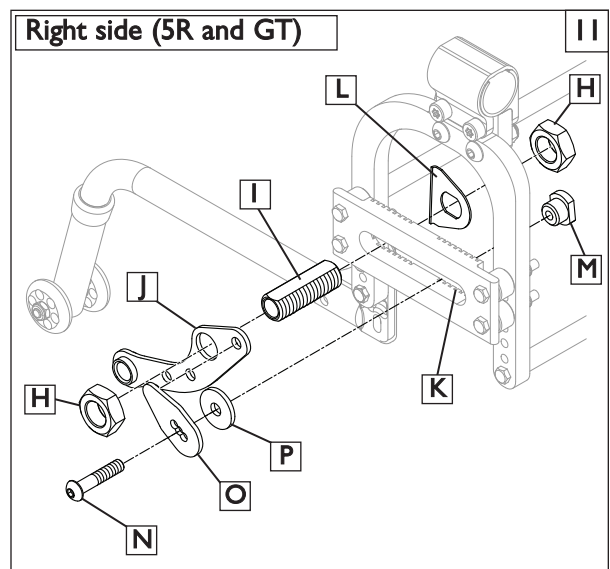
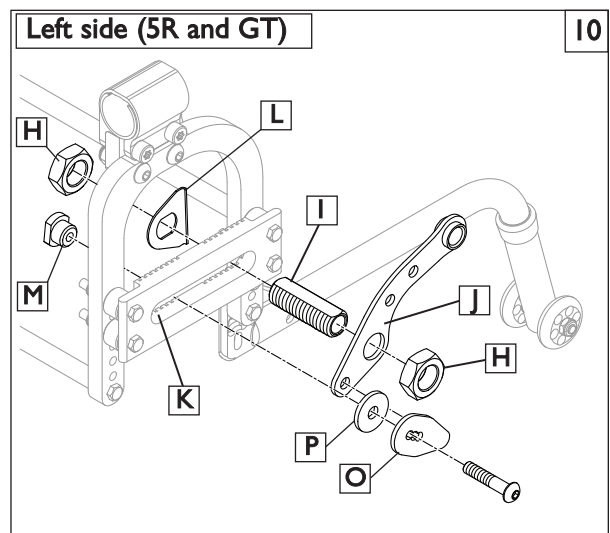
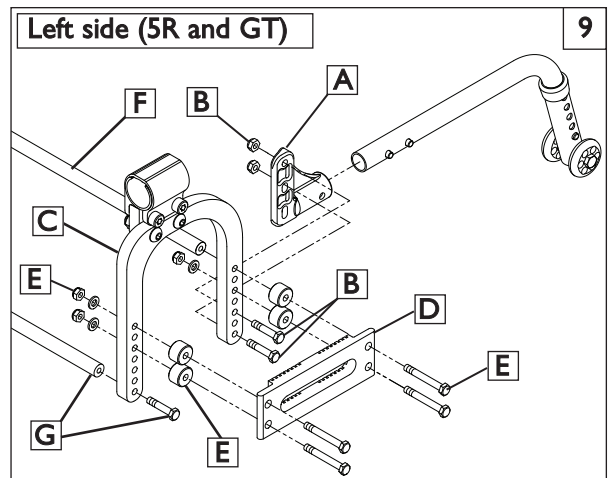
### WARNING

Attention dealers and qualified technicians, make sure that the axle placement and center of gravity of the chair is in the same location as it was before the installation.

1. **Install axle sleeves and stopper arms**
  - a. Install axle sleeve nut (H) to the axle sleeve (I)
  - b. Install stopper arm (J) over axle sleeve (I).
  - c. Install the assembly through axle plate slot (K).
  - d. On back side, place index washer (L) and axle sleeve nut (H) on axle sleeve. Hand tighten the nuts.
  - e. Install Boss (M) through axle plate slot and install screw (N) through the small stopper arm (O) and washer (P).
  - f. Hold Boss (M) tight with adjustable wrench and tighten screw (N) with hex key wrench until it is snug but can still move in the axle sleeve slot.
2. **Adjust and tighten the stoppers:**
  - a. With hardware loose, place Xtender wheel on axle plate, through sleeve and adjust stopper arm so Xtender wheel pin fits in stopper arm.
  - b. Mark location of Boss (M) on axle plate with tape and slowly remove the Xtender wheel.
  - c. Tighten Boss (M) and screw first, keeping Boss (M) on mark. Tighten the axle sleeve nuts.
  - d. Torque axle sleeve nuts to 30 ft-lbs and screw to 85 in-lbs.

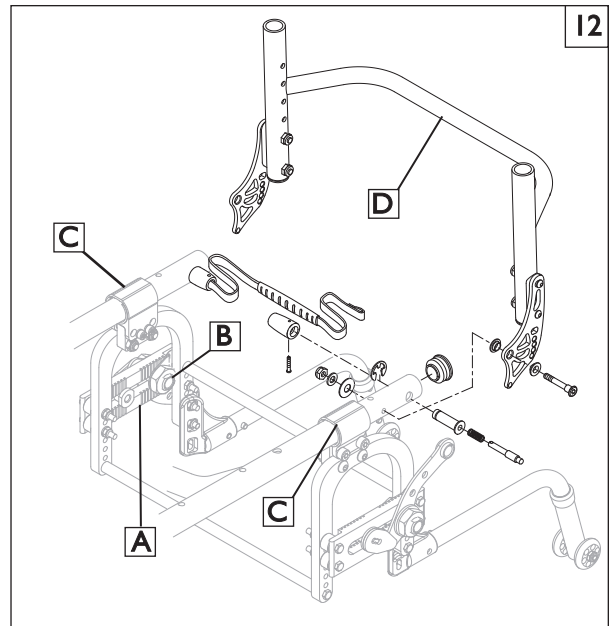


e. Repeat steps 1 and 2 for both sides.



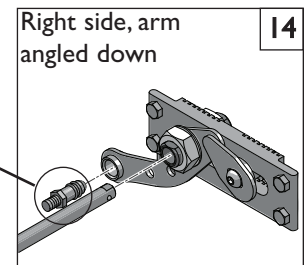
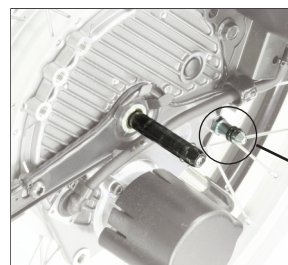
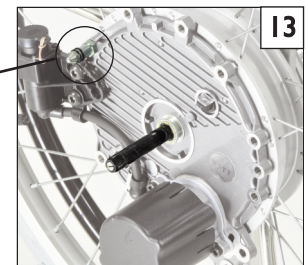
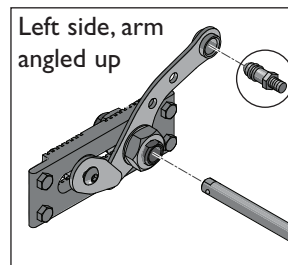
**F. XTENDER INSTALLATION** 12

1. **Measure and adjust for balance and symmetry.**
  - a. Check that the axle brackets (A), axle sleeves (B), and frame clamps (C) have been installed evenly from side to side.
  - b. Once the assembly is balanced, and symmetrical, Use a torque wrench and socket wrench to tighten all hardware to the correct torque.
2. **Re-install Backrest and Backrest brackets**
  - a. Refer to Pre-installation section and install the backrest using the reverse of the procedure given in step 2.
  - b. Use a torque wrench and socket wrench to check all hardware for correct torque, and make sure the backrest can be adjusted, and that it folds and locks properly.
  - c. Attach the Xtender wheels to the chair (Fig. 12 & 13)



**G. CHECKOUT** 13 14 15

1. **Torque pins and Axles**
  - a. Make sure the Torque Pins (Fig. 13) are seated properly and tight.
  - b. Use a torque wrench and socket wrench to check all hardware for correct torque.
1. **Double-check Orientation and Torque on all Hardware.**
  - a. Check that the chair rolls smoothly and evenly.
  - b. Use a torque wrench and socket wrench to check all hardware for correct torque.

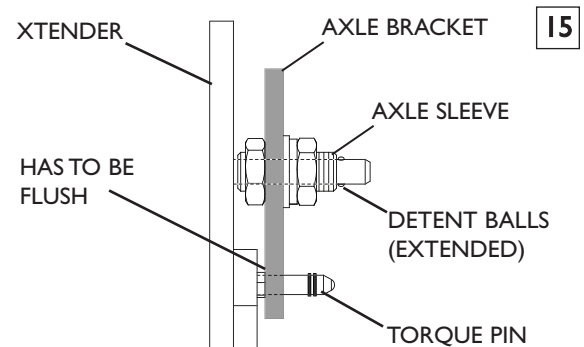


**DEALER/TECHNICIAN WARNING**



Attention dealers and qualified technicians, do not operate or service this device without first reading the owners manual. If you do not understand the instructions and warnings in the owners manual please contact the Quickie Technical Service Department before operating and/or servicing the Quickie device. Failure to do so may result in damage and/or injury.

For more information and important warnings, you can find the Xtender owner's manual at [www.Sunrisemedical.com/ Help-support](http://www.Sunrisemedical.com/Help-support).



Sunrise Medical • 2842 Business Park Ave. • Fresno, CA 93727 • USA  
In Canada (800) 263-3390